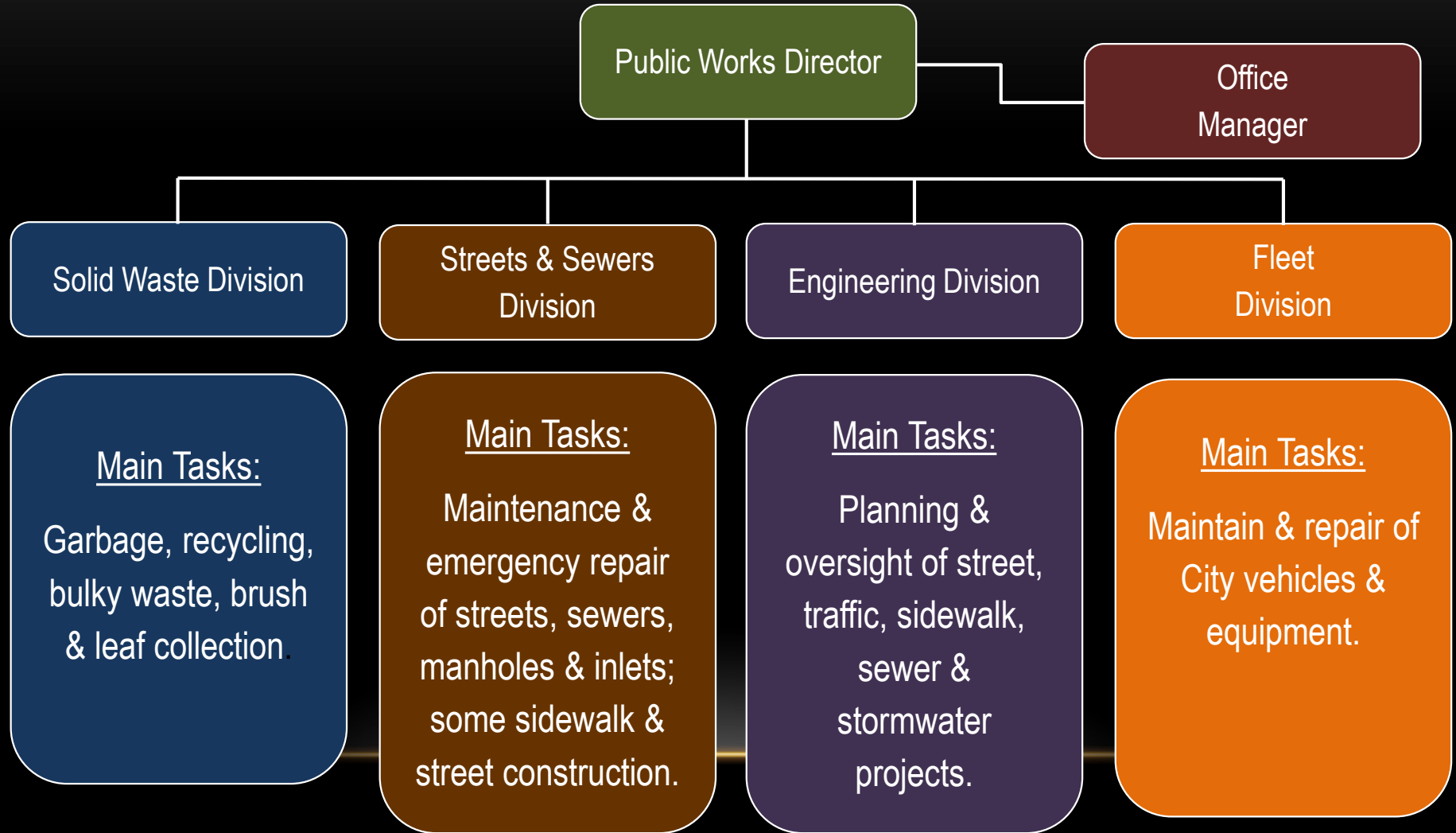


# Public Works Department-106 full time employees

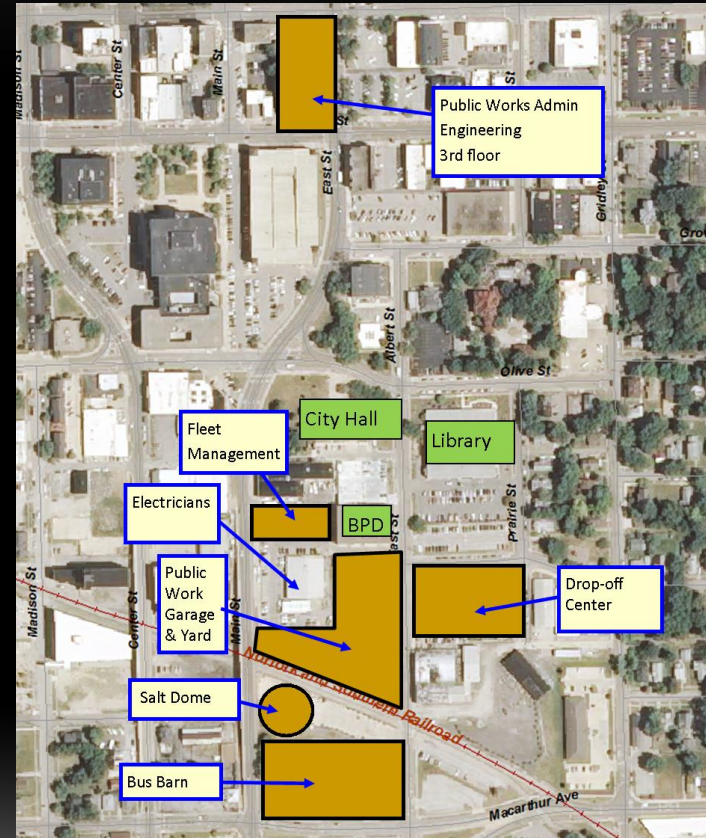


## Public Works outlook

# The mission statement & quality assurance

Mission: "Providing good stewardship of the public infrastructure and equipment safely through competitive services and excellent customer relations."

Achieving it: National accreditation will ensure that Bloomington Public Works achieves the quality and professionalism it expects of itself and is expected of it by the Administration, City Council and Bloomington public.



## Operations challenge FY16

# Solid Waste Fund deficit and potential answers

For Council 03/09/2015

Plans to end the deficit  
in Solid Waste Fund by:

- Addressing costs of bulk  
and brush
- Increasing operational  
efficiency

## Making the Solid Waste Fund Solvent

An approach to producing a self-supporting Refuse enterprise





# Public Works braces for a get-by year in which infrastructure funding is limited



## Major projects for Fiscal Year 2016

### Local and State Motor Fuel Tax

\$2.4 million	Resurfacing plus sidewalk work
\$1.8 million	3 east-side traffic lights
\$900,000	Hamilton Road extension (Bunn-Commerce) design
\$450,000	Towanda-Vernon intersection upgrade

### Sewer Improvement Fund

\$1 million	H. Johnson pump station replacement with gravity sewer
\$750,000	Sewer lining and manhole repair
\$520,000	The Grove at Kickapoo Creek oversizing
\$150,000	CCTV evaluation

## Sidewalks

# A plan and a beginning of funding



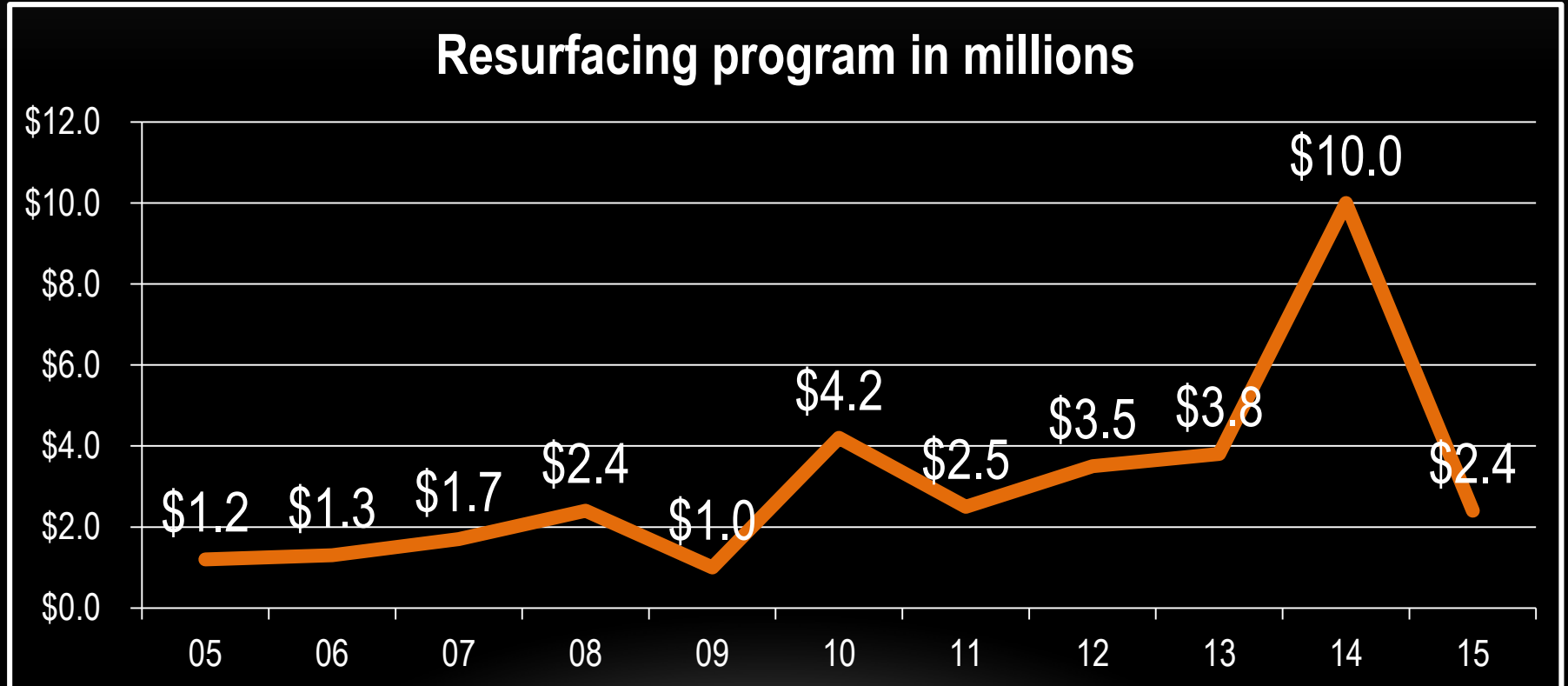
### Sidewalk Master Plan

- Status: Final revisions nearly finished
- Of note: Nominated by Illinois Public Works Association for a national award for management innovation.
  
- ✓ Master Plan budget, Year 1:  
**\$571,583**
  
- ✓ Budgeted FY 16:  
**\$250,000**  
\$200,000 from local MFT  
\$50,000 from 50/50 contributions



## Resurfacing for 2015 construction year

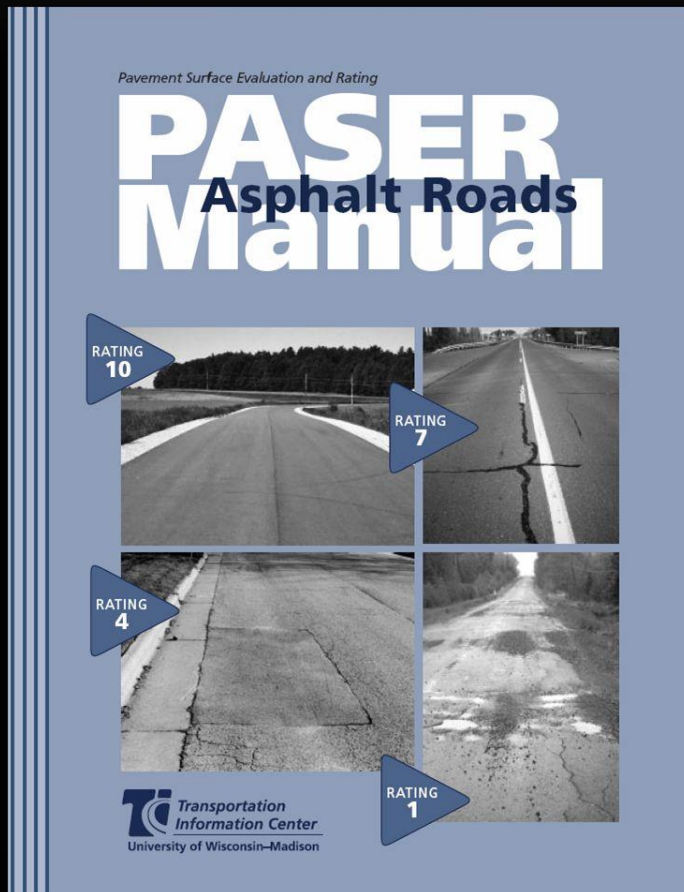
# A major step backward after a big step forward



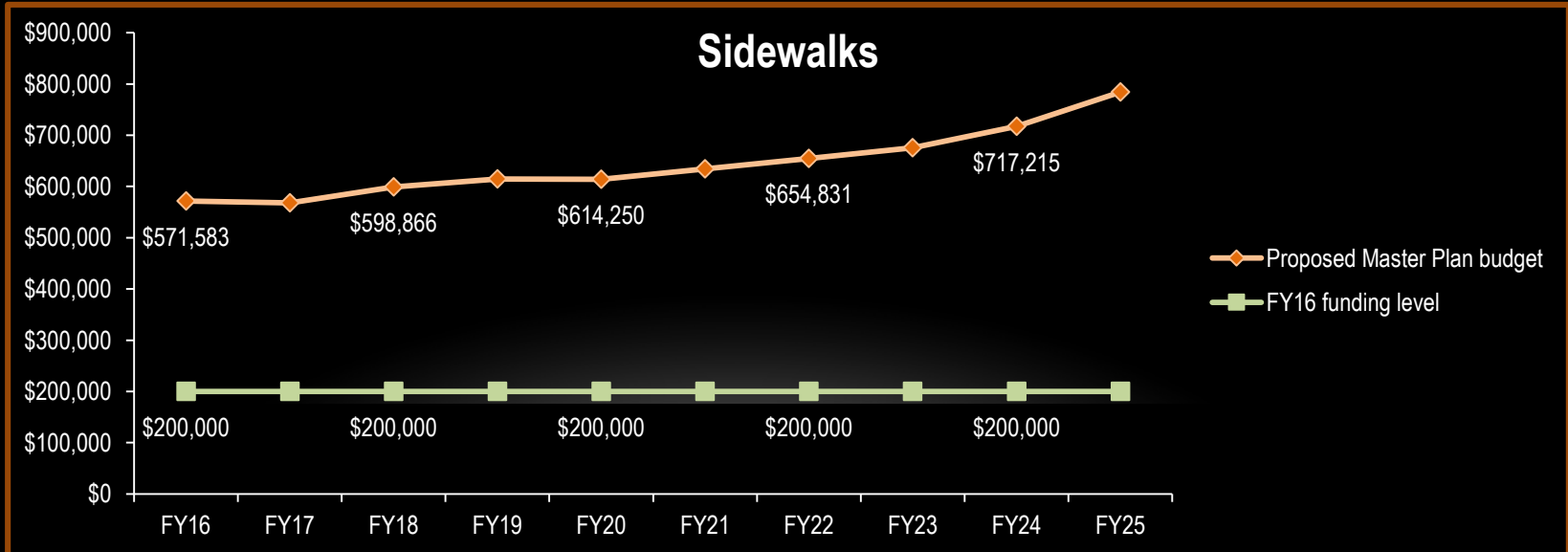
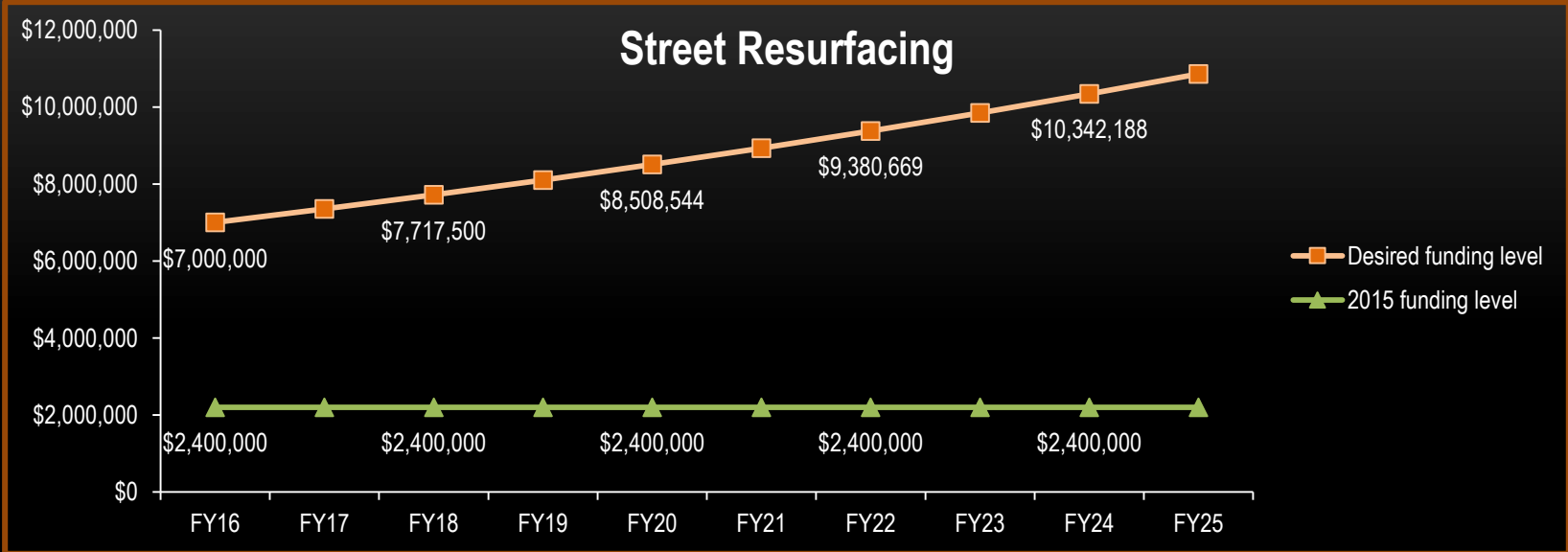
About 10 percent of funds pay for ADA-compliant sidewalk ramps

# Pavement Cost to catch up

- 2008 \$29 million
- 2011 \$39 million
- 2015 \$47 million

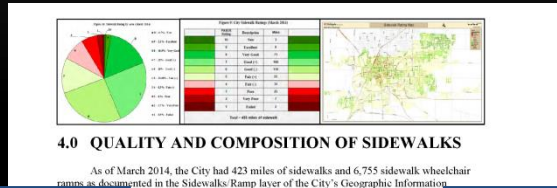






# Infrastructure as a whole

# Planned but underfunded: An ongoing theme



**Composition**

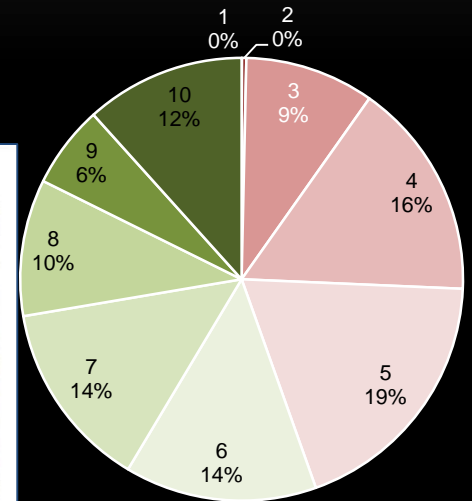
The City's sidewalks are diverse in terms of type, size and age. Although most are concrete, asphalt and brick sidewalks remain in the system. Figure 2 shows the composition of each type of material in the City's sidewalk system as of March 2014.

**Figure 2: Length of Sidewalks by Material**

Material	Length (lineal feet)	Miles
Concrete	2,227,156	422
Asphalt	988	0.19
Brick	4,664	0.88

Typically, sidewalks are four to five feet wide, although a small percentage are other widths. Sidewalks abutting the curb, with no parkway between sidewalk, must be six feet wide. Downtown sidewalks run from curb to curb.

## Pavement ratings by percent



**2014 City of Bloomington Stormwater and Sanitary Sewer Master Plans**

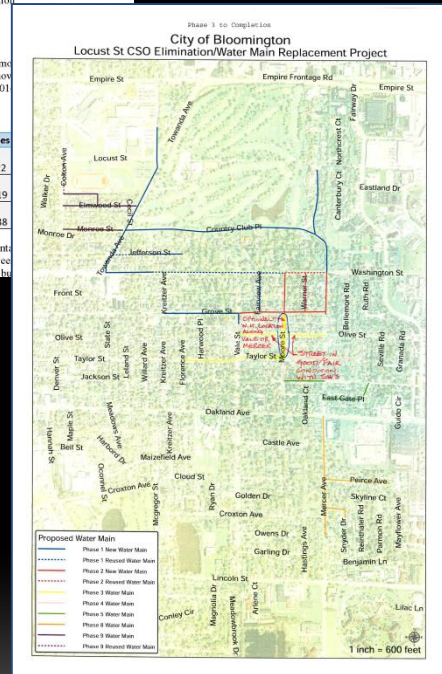
January 2014

Foth No. 128005

**Foth**

**OHM**

**Baker**



Our plans document needs, but the funding to address them falls short