



ADDENDUM II

BLOOMINGTON CITY COUNCIL AGENDA

FEBRUARY 9, 2015

ADDITION TO REGULAR AGENDA

- Item 8A. Waive the Formal Bid Process and Approve Professional Services Agreement with F.B. Leopold, Inc. of Zelienople, Pennsylvania, a proprietary filter under-drain manufacturer, for the retrofit of two filters (#14 and #15) at the Water Treatment Plant. (*Presentation / Attachment No. 2*)

- Item 8B. Analysis of Bids and Approval of Contract for Relocation of the two (2) 24” Transmission Mains in the Town of Normal at the Main St. Bridge, Bid #2015-49. (*Presentation / Attachment No. 2*)

Bloomington Water Purification Plant: Treatment Processes

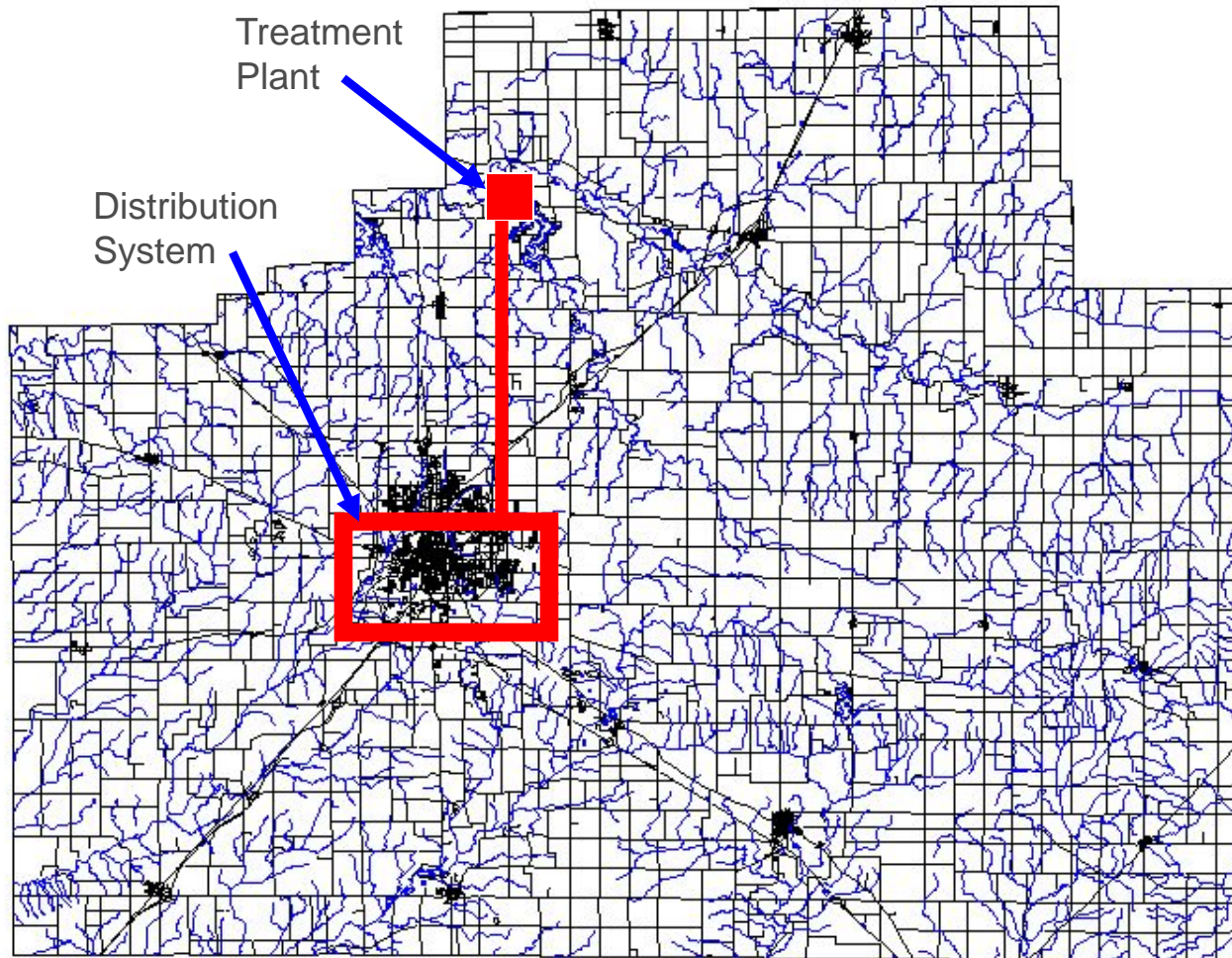


City of Bloomington, Illinois

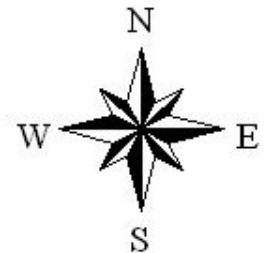
City Council Meeting

February 9, 2015

McLean County, Illinois



The Large Distance Between the Treatment Plant at Lake Bloomington and the Distribution System Requires the Use of Chloramines





08

N 1700 EAST RD

WATERBURY WAY

E 2550 NORTH RD

PARK VIEW LN

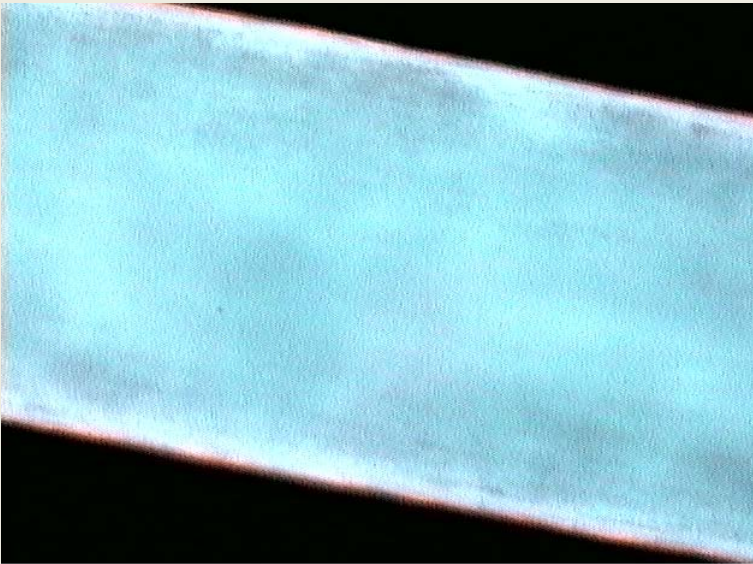
0 0.06 0.1 Miles

1:3,546

By using any MoGIS products or services, you indicate your acceptance of the Licensing Agreement:

<http://www.MoGIS.org/License>

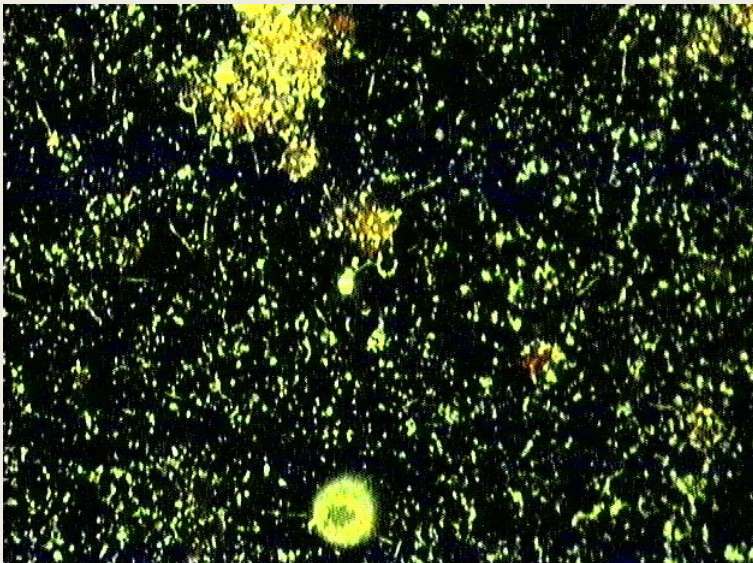
Printed: 2/5/2015 4:15:25 PM



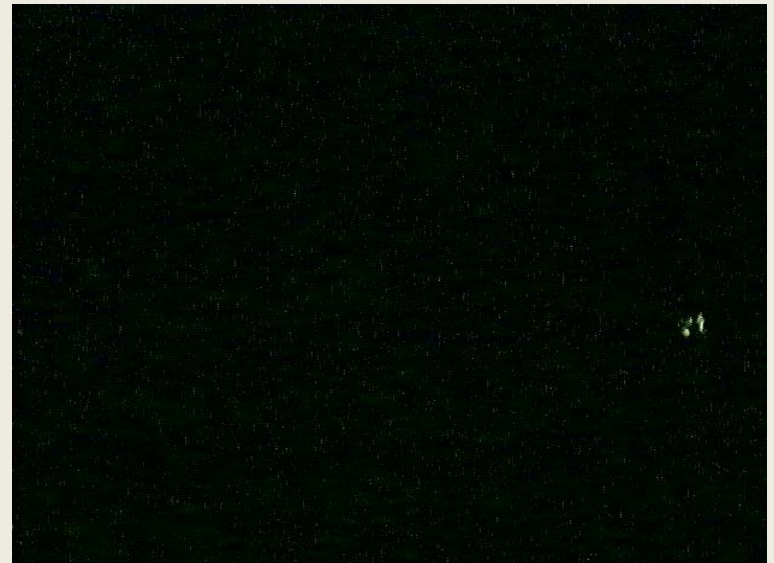
A. Human hair. 400x fluorescence micrograph



B. Lake Bloomington water. filter mount 400x light micrograph



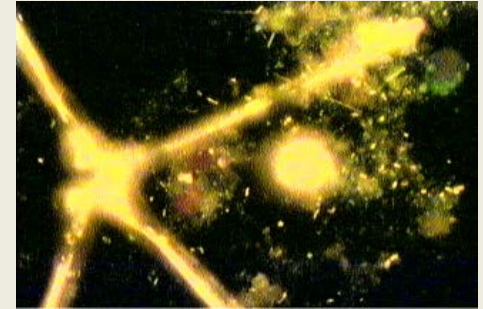
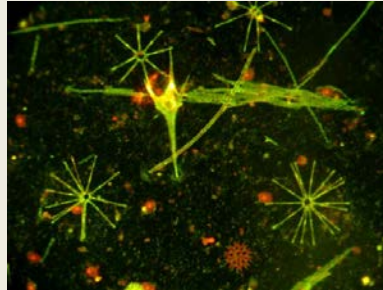
C. Lake Bloomington water. filter mount 400x acridine orange fluorescence micrograph



D. Finished Plant water. filter mount 400x Live/Dead stain fluorescence micrograph

Water Treatment Processes

- Particle Removal

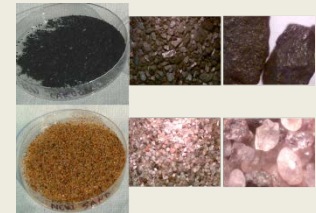
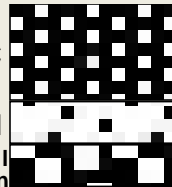


- Lime Softening



- Filtration

24" GAC
12" sand
gravel
underdrain



- Disinfection





PLANT-AT-A-GLANCE

OPERATIONAL READINESS KEY

- ACTIVELY IN SERVICE
- READY FOR SERVICE
- CONDITIONALLY READY*
- OUT OF SERVICE*

*Provide below:

- 1) status update, and
- 2) estimated date of return to availability

NOTES

Elevation _____
date _____

Lake Evergreen Pumps



Elevation _____
date _____

Lake Bloomington Pumps



Sludge Lagoons

0 - 0.6 MGD



Backwash Reclaim Basin

0.7 or 1.2 MGD



Elevation _____
date _____

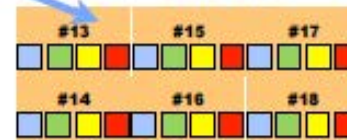


Old Plant Filters
0.4 - 1.0 MGD each
Max: 10 MGD



RECARBONATION
BASINS
20.5 MGD max.

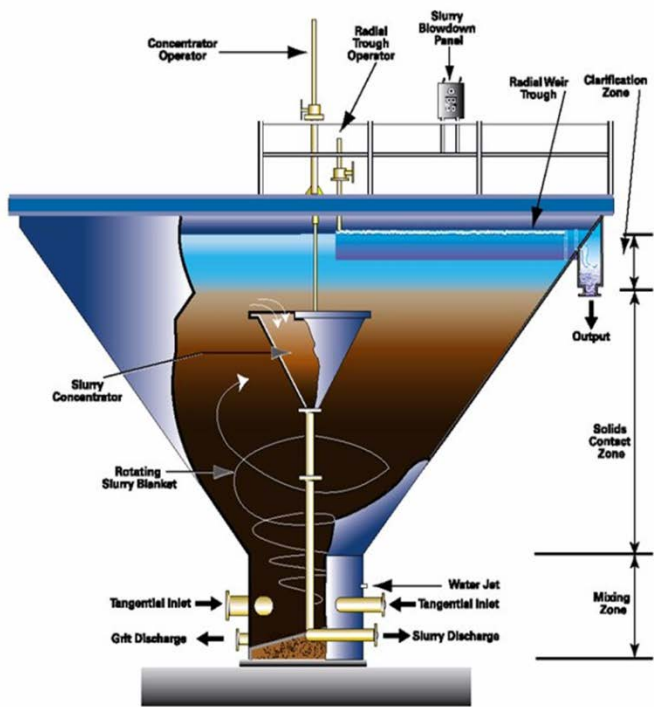
New Plant Filters
1 - 2 MGD each
Max: 12 MGD



WTP Clearwell
2 MG

High Service Pumps

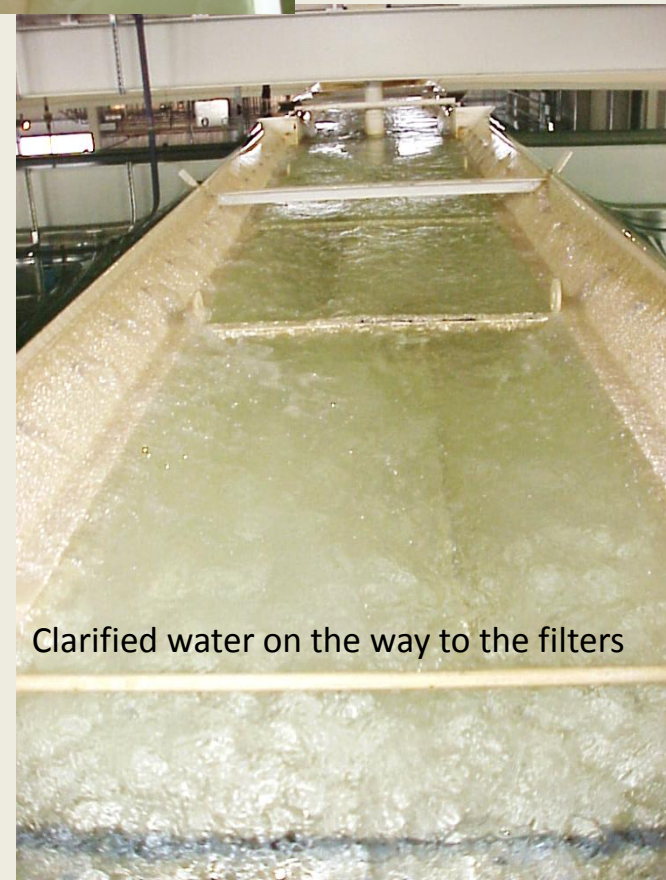




A. Clarifier cross section



C. View looking down into clarifier



D. Clarified water on the way to the filters



B. Clarifier at water plant



A. View looking down into filter



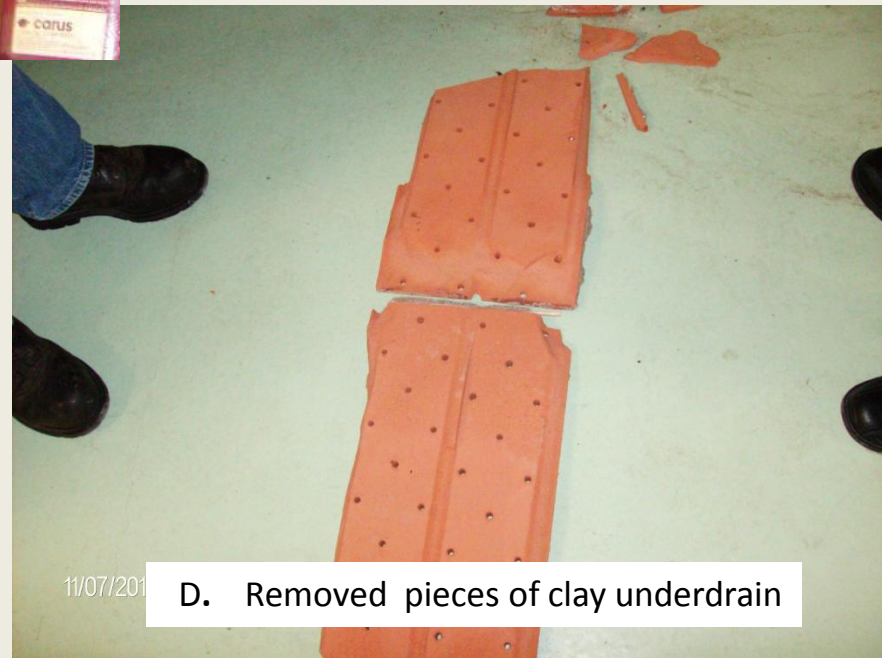
B. Cross section of a filter



C. View looking into filter with media removed



D. Close up of underdrain



D. Removed pieces of clay underdrain



A. Proposed new gravel-less underdrain



B. Existing underdrain to be replaced

11/07/2013





*Main Street Bridge Transmission
Main Relocation Project*

Illinois Department of Transportation is replacing the Main Street Bridge in the Town of Normal over the Sugar Creek.

The City of Bloomington has two 24” transmission mains that are in conflict with the new bridge.

Main Street Bridge Transmission Main Relocation Project



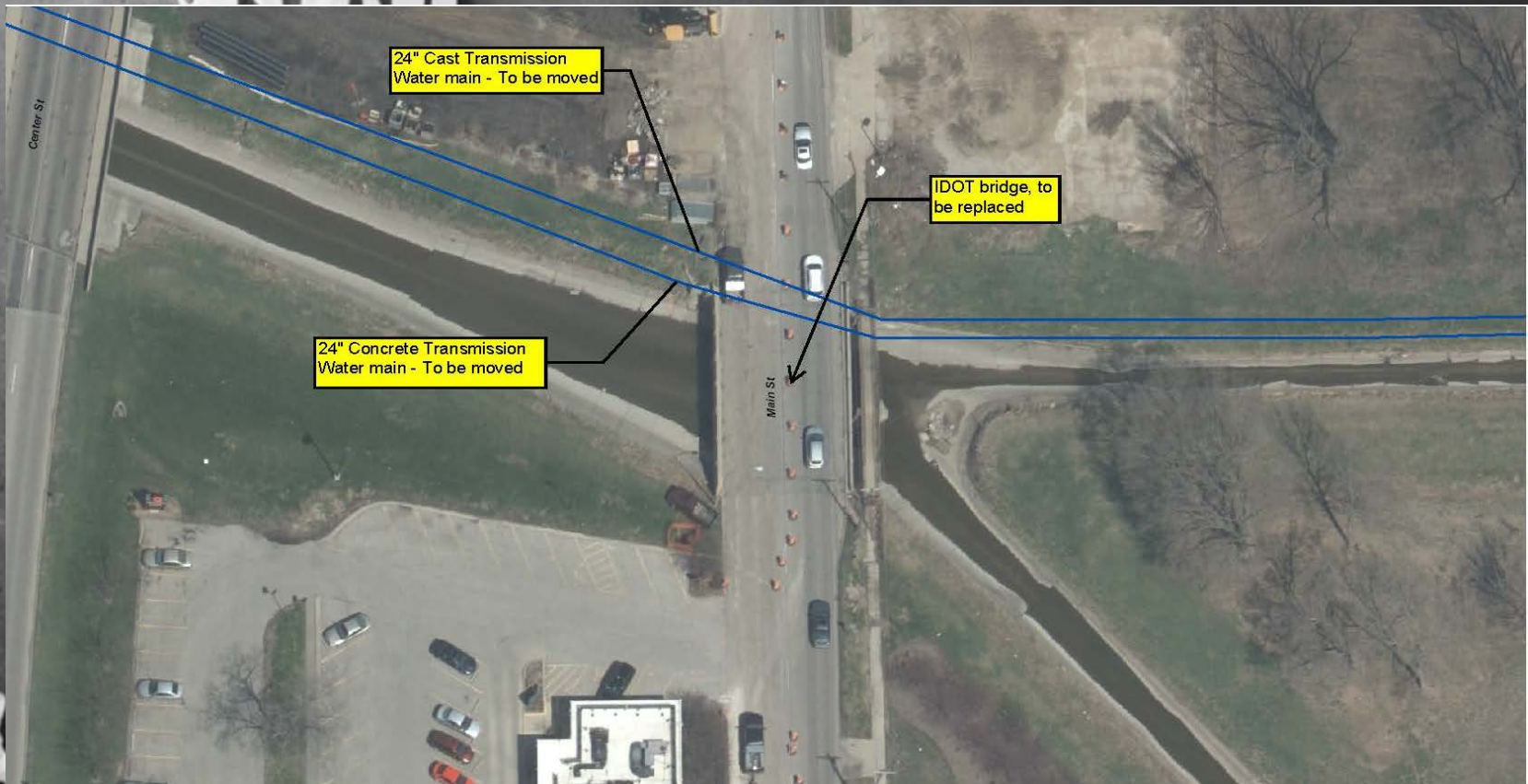
Main Street Bridge Transmission Main Relocation Project



Main Street Bridge Transmission Main Relocation Project



Main Street Bridge Transmission Main Relocation Project





Main Street Bridge Transmission Main Relocation Project

Illinois Department of Transportation is replacing the Main Street Bridge in the Town of Normal over the Sugar Creek.

The City of Bloomington has two 24” transmission mains that are in conflict with the new bridge.

The City of Bloomington went out to bid for the relocation project and received three sealed bids back. The bids were opened at 11:00 AM, on January 22, 2015.

Staff would recommend the acceptance of the lowest bid from Stark Excavating, Inc. in the amount of \$326,640.00.