

City of Bloomington Water Department FY 15 Budget

Bloomington, Illinois
Craig M. Cummings, Water Director

The FY 15 Water Department Budget

- * What do we do?
- * Budget snapshot.
- * What is new in this budget?
- * What are the major drivers in the Water Department's FY 2015 budget?
- * What else will we do in the FY 15 budget?
- * Looking at the future, where are we going?

Water Department - What do we do?

- * A little bit of everything.
- * Produce a City product that is consumed.
- * Water treatment and distribution.
- * Risk mitigation.
- * Watershed protection.
- * Research.
- * Fire protection.
- * Billing services (internal and contract).
- * Street maintenance @ Lake Bloomington.
- * Other maintenance @ Lake Bloomington.



Water Department -What do we do? (continued)

- * Water meter reading.
- * Locating services.
- * 24/7 Operations.
- * Emergency response.
- * Foster/support economic development.
- * Work well beyond Bloomington's borders.
- * Lake Patrol.
- * Laboratory services.
- * Regional water supply.



Water Department - Budget snapshot

- * The budget is a “status quo” budget on the Department’s side but not the customer’s side.
- * Revenues of approximately \$17,900,000.
- * Expenses of approximately \$24,500,000 (w/ capital).
- * Drawing upon fund balance for the difference.
- * There is no rate increase; the last rate increase was effective May 1, 2011.
- * There is no change in fees.

Water Department - What is new in this budget?

- * Nothing really.
- * No new personnel.
- * No new programs.
- * More capital spending in the areas of distribution improvements, plant expansion and groundwater development.

What are the major drivers for the FY 15 budget?

- * Chemicals (\$1,075,000)
- * Electricity (\$828,000)
- * Labor (\$5,000,000)
- * Capital projects (\$8,125,000)

What else will we do in the FY 15 Water Department budget?

- * Install another 6,000 radio reading water meters.
- * Develop a water conservation plan.
- * Continue water supply planning efforts.
- * Continue water supply exploration efforts.
- * Continue our fire hydrant testing program with the Fire Department.
- * Continue with our leak detection program.



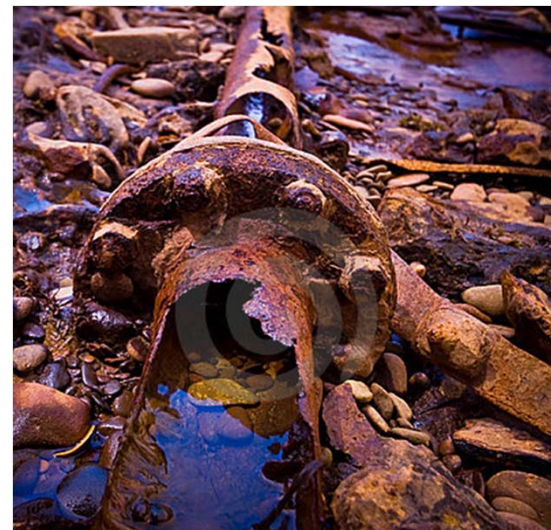
Looking to the Future Where are we going?

- * The Water Department will continue its long-term effort to improve the sustainability of our water supply by maintaining our active watershed program;
- * Water Conservation will become an integral part of future planning;
- * An interim groundwater supply in the area of SW Bloomington will be developed“the bridge”;
- * Ultimately, the development of new well field near Tazewell County.
- * The Water Department views a groundwater supply as the means to supply growth in the future.
- * The Water Department will ramp up capital to address infrastructure issues, including buildings.

Water thought for the day

The society which scorns excellence in plumbing as a humble activity and tolerates shoddiness in philosophy because it is an exalted activity will have neither good plumbing nor good philosophy: neither its pipes nor its theories will hold water.

[John W. Gardner](#)



Thank You!

Questions?



Water Supply Improvements

- * 1990: Extensive mapping of the Mahomet Aquifer in the Mclean County/Tazewell County/Logan County intersection area (the “McTaz” wellfield), including the drilling of test wells. Over \$1,000,000 invested
- * 1990 – present: Continued measurement of the aquifer levels from the monitoring wells in the McTaz wellfield. \$ 2,500/year.
- * 1990 – present: The City develops a small watershed observation and sampling site in the Lake Bloomington watershed. This site is continuously monitored. \$10,000 invested.
- * 1991 - The City constructs the Mackinaw Pumping Station to draw water from the Mackinaw River to supplement the reservoir when conditions allow for pumping. Used effectively in 2012 and 2013. \$1,200,000 investment.

Water Supply Improvements (continued)

- * 1995: City increases capacity of reservoirs over time with addition of 37% more capacity (approx. 1.230 billion gallons) of supply in Evergreen Lake Reservoir, raising spillway by 5 feet. Approximately \$1,200,000 invested.
- * 2003 - 2010 : Construction of segments of a replacement transmission main from Lake Bloomington to the City. Approximately \$10,000,000 invested.
- * 2003 – 2014 : City maintains contact with Water Authorities personnel, occasional face-to-face meetings.
- * 2005-2014: City embarks on annual program of leak detection on approximately 25% of the total pipe miles per year. Approximately \$40,000/year
- * 2006 – 2009: Sand County Foundation funding of watershed management. Approximately \$500,000 received.

Water Supply Improvements (continued)

- * 2009 : City completes test hole drilling at locations near the Evergreen Lake Reservoir, the Lake Bloomington reservoir, near the Village of Downs and south of the Den Golf Course. Approximately \$250,000 invested.
- * 2010 : City completes comprehensive water supply study (The Interim Water Supply Study) calling for exploration and development of an interim groundwater supply in southwest Bloomington among other initiatives. \$100,000 invested.
- * 2011 : City works with the Ecology Action Center on a demonstration project at Davis lodge using rain barrel water collectors and a garden. Approximately \$2,000 invested.
- * 2012 : City is awarded competitive Partners in Conservation Matching Grant for Evergreen Lake Reservoir shoreline protection along the shoreline west of the pump station. Approximately \$100,000 total.

Water Supply Improvements (continued)

- * 2012 : City experiences a drought, on par with the 1988-89 drought in Central Illinois with minimal inconvenience or water supply peril. Mackinaw River pump station utilized to pump 500 million gallons into the Evergreen Lake reservoir.
- * 2012/2013 : City develops constructed wetlands in the Evergreen Lake Watershed utilizing funding from multiple grant sources as well as internal funds. \$50,000 invested.
- * 2012/13 : City meets with large irrigator (State Farm) to discuss water conservation strategies. Some suggestions implemented by the Company.
- * 2013/14 : City experiences a drought with minimal inconvenience or water supply peril. Mackinaw River pump station utilized to pump 125 million gallons into the Evergreen Lake Reservoir.

Water Supply Improvements (continued)

- * 2013: City receives competitive Partners in Conservation Matching Grant for Evergreen Lake Reservoir shoreline protection project along the White Oak Boat ramp and the Comlara Park swimming area. Approximately \$100,000.
- * 2013: City purchases cellular data loggers for three test wells in the McTaz wellfield to allow for continuous monitoring of water levels in the aquifer.
- * 2013: Illinois State Water Survey completes a water well inventory in the area assumed to be within the possible impact range of the Southwest wellfield.
- * 2013: Illinois State University bathymetric survey ongoing. Some technical difficulties and low reservoir levels encountered. Will continue in the spring of 2014.

Water Supply Improvements (continued)

- * 2013 : Two Friends of Reservoirs 100% grant funding for a \$20,000 fish habitat project at Lake Bloomington Reservoir and a \$5,000 project for aquatic vegetation control in the Evergreen Lake Reservoir.
- * 2013/2014 : The Nature Conservancy and The Environmental Defense Fund fund an Adaptive Nutrient Management program. Approximately \$500,000 in no match funding.
- * 2014 : Per the Interim Water Supply Plan, the City plans to initiate a water conservation/sustainability program in cooperation with the Ecology Action Center.