



ADDENDUM

BLOOMINGTON CITY COUNCIL AGENDA

MAY 14, 2012

ADDITION TO CONSENT AGENDA

- Item 7B.** Bills and Payroll. (Recommend that the bills and payroll be allowed and orders drawn on the Treasurer for the various amounts as funds are available.) *City Council Memorandum with Attachment.*

ADDITION TO REGULAR AGENDA

- Item 8B.** Illinois Transportation Enhancement Program (ITEP). (That the Illinois Transportation Enhancement Program (ITEP) application for the Gateways project be submitted and the Resolution adopted.) *(45 minutes) City Council Memorandum with Attachment.*

CORRECTION TO REGULAR AGENDA

- Item 8A.** An Ordinance Amending “An Ordinance Describing and Designating an Area Located Partially within the City of Bloomington, Town of Normal and Unincorporated McLean County as an Enterprise Zone” including Amendment to Enterprise Zone Intergovernmental Agreement – One Earth Energy, LLC. *Corrected Exhibit B attached.*

EXHIBIT B

**AMENDMENT TO ENTERPRISE ZONE INTERGOVERNMENTAL AGREEMENT --
TO INCLUDE NEW TERRITORY AND THE NEW UNITS OF GOVERNMENT OF
FORD COUNTY AND GIBSON CITY**

This Amendment is entered into the ____ day of _____, 2012, by and between the City of Bloomington, a municipal corporation, the Town of Normal, a municipal corporation, the County of McLean, the County of Ford and the City of Gibson City, a municipal corporation, a body politic and incorporate, pursuant to the authority granted under Article VII, Section 10 of the Illinois Constitution and State law.

WHEREAS, the City of Bloomington, a municipal corporation, the Town of Normal, a municipal corporation, the County of McLean, entered into an Intergovernmental Agreement in December, 1984, for the purpose of creating and operating an Enterprise Zone within the jurisdiction of said parties pursuant to the Illinois Enterprise Zone Act (the "Act"); and

WHEREAS, the Enterprise Zone was originally certified as an enterprise zone by the Department of Commerce and Economic Opportunity of the State of Illinois effective July 1, 1985; and

WHEREAS, the Enterprise Zone now compasses approximately 6.259 square miles; and

WHEREAS, the Act allows an enterprise zone to encompass up to 15 square miles if the zone is a joint effort of four or more units of government; and

WHEREAS, it has been determined that certain additional territory contiguous to the Enterprise Zone totaling up to approximately 0.59 square miles would be benefited by being encompassed within the boundaries of said Enterprise Zone; and

WHEREAS, it would be in the best interests of the citizens of the City of Bloomington, Illinois, the Town of Normal, Illinois, and the County of McLean, Illinois that said additional territory and new units of government be included in the Enterprise Zone.

NOW, THEREFORE, BE IT AGREED BETWEEN THE PARTIES AS FOLLOWS:

1. That Section 2 "Description" of the Intergovernmental Agreement, and the property described in Exhibit "E1-a" and incorporated in said Section by reference, as subsequently amended, be and the same is hereby amended to include therein the area described in Exhibit A attached hereto (the "Amended Area"), and the Amended Area is hereby designated as part of the Enterprise Zone pursuant to and in accordance with the Act, subject to the approval of the State as provided in the Act.
2. Except to the extent amended hereby, that all provisions, agreements, stipulations, rights, obligations, and duties set forth in the original Intergovernmental Agreement, as

subsequently amended, are hereby ratified and confirmed, and are hereby applied to the Amended Area of the Enterprise Zone in their entirety.

3. This agreement may be amended from time to time only by written agreement of the parties, provided, however, that the City of Bloomington, Town of Normal or County of McLean may seek to amend provisions of the Enterprise Zone ordinance or amend the boundaries of the Enterprise Zone within their corporate boundaries or delete enterprise zone territory in the City of Bloomington, the Town of Normal, or the County of McLean providing they receive the approval of the State Agency in charge of such approval, without the need to further amend this Agreement; and further, by execution of this Agreement Ford County and Gibson City consent to any such changes by the City of Bloomington, Town of Normal or County of McLean. If requested by the State Agency or the City of Bloomington, Town of Normal or County of McLean, the Corporate Authorities of the County of Ford and City of Gibson City shall each enact ordinances acknowledging this limited consent to such boundary change(s).

THE UNDERSIGNED PARTIES HAVE CAUSED THIS AMENDMENT TO INTERGOVERNMENTAL AGREEMENT TO BE EXECUTED BY THEIR DULY DESIGNATED OFFICIALS, PURSUANT TO AUTHORITY CONFERRED BY THEIR RESPECTIVE GOVERNING BODIES THE DATE FIRST SHOWN ABOVE.

City of Bloomington
a Municipal Corporation

Town of Normal
a Municipal Corporation

By _____
Mayor

By _____
Mayor

Attest:

Attest:

City Clerk

City Clerk

County of McLean
a Body Politic and Corporate

County of Ford
a Body Politic and Corporate

By: _____
County Board Chairman

By: _____
County Board Chairman

Attest:

Attest:

County Clerk

County Clerk

City of Gibson City
A Municipal Corporation

By: _____
Mayor

Attest:

City Clerk

FOR COUNCIL: May 14, 2012

SUBJECT: Bills and Payroll

RECOMMENDATION: That the bills and payroll be allowed and orders drawn on the Treasurer for the various amounts as funds are available.

FINANCIAL IMPACT: Total disbursements to be approved \$5,792,404.06, (Payroll total \$1,823,119.12 and Accounts Payable total \$3,969,284.94).

Respectfully submitted for Council consideration.

Prepared by:

Recommended by:

Patti Lynn Silva
Director of Finance

David A. Hales
City Manager

(ON FILE IN CLERK’S OFFICE)

Attachment: Attachment 1. Bills and Payroll on file in the Clerk’s office. Also available at www.cityblm.org.
Attachment 2. Summary Sheet Bills and Payroll Report

Motion: That the bills and payroll be allowed and orders drawn on the Treasurer for the various amounts as funds are available.

Motion: _____ Seconded by: _____

	Aye	Nay	Other		Aye	Nay	Other
Alderman Stearns				Alderman McDade			
Alderman Mwilambwe				Alderman Anderson			
Alderman Fazzini				Alderman Schmidt			
Alderman Sage				Alderman Fruin			
Alderman Purcell							
				Mayor Stockton			

FOR COUNCIL: May 14, 2012

SUBJECT: Illinois Transportation Enhancement Program (ITEP)

RECOMMENDATION: That the Illinois Transportation Enhancement Program (ITEP) application for the Gateways project be submitted and the Resolution adopted.

BACKGROUND: In 2008, the Citizen's Beautification Committee (CBC) launched a Request for Proposal for the creation of a gateways plan. Through this approach, the City would develop a comprehensive strategy, master plan and design concept for the major entrances or "gateways" to the community. In alignment with the Principles of the Vision 2025 as outlined in the City's Strategic Plan, the Gateways project serves to make the City beautiful with attractive, clean entrances along major corridors. Gateways provides an opportunity to create a strong visual identity that promotes the unique character of the City, while also providing better connectivity to major destinations and attractions in the community. The City wishes to achieve this long term vision, the ITEP program has been identified as an opportunity to stimulate progress, provide a major funding source and ultimately maximize the City's financial investment in its vision.

Historically, ITEP provided funding for community based projects that expand travel options and enhance the transportation experience. This is done by improving the cultural, historic, aesthetic and environmental aspects of transportation infrastructure. As project sponsor, how the City would be defined, may receive up to eighty percent (80%) reimbursement for eligible project costs. The remaining twenty percent (20%) is the responsibility of the project sponsor. A project must qualify as one (1) of the twelve (12) eligible categories listed in the ITEP Guidelines Manual. The project must relate to surface transportation in order to be eligible for funding. In prior years, McLean County has received ITEP funds for the Route 66 Bike Trail.

While no official announcements have been made to date, it is important to note that the state may eliminate ITEP funding. This could be the final opportunity to submit an application for this long standing, bi-annual program.

Having received Council's approval on April 9 and 23, 2012, the CBC, with the support of staff and Hitchcock Design Group, has conducted further research in an attempt to prepare a more comprehensive strategy for the ITEP application. This process included: 1.) formulating an approach; 2.) establishing priorities; 3.) creating a template for current and future enhancements; 4.) understanding financial and non-financial impacts as they relate to each stage; and 5.) incorporating project phases over a period of time that would allow the City to achieve the 2025 Vision.

In accordance with a Policy Action item under Goal 4: Grow the Local Economy, the City is charged with the creation of a Major Corridors Revitalization Strategy. If approved, the Gateways would function as a starting point and provide direction for this comprehensive strategy, master plan and design concept. While long term vision includes the need to create

solutions for all community entrances, the first step in this ITEP visioning process is to identify the location for which the program funds can have the greatest impact. Once a location and solution are identified, a specific design concept is then created, adopted and implemented. In moving forward with the creation of a master plan, this ITEP application will serve as a model or template for all remaining gateways into our community.

Priorities for the gateways project were identified in large part during the stakeholder tour held on April 23, 2012. When participants saw the true aesthetic appearance of our community's gateways, there was unanimous support for using the Market St. entrance as a model for future projects. While traffic counts are higher in other areas, including the Veterans Pkwy/Rt. 9 intersection, those areas were thought to have greater aesthetic appeal and more recent economic development. These entrances were not identified as the first priority for the application process.

The second phase of the gateways ITEP application process includes the creation of a concept plan that would enhance the transportation experience at the selected entrance, in this case the Market St./I - 55/I - 74 interchange. As outlined in the Context Plan provided by Hitchcock Design Group, the City's ITEP application strives to achieve a well maintained interstate, neighborhood and surrounding green space program. The use of a combination of public space, pedestrian and vehicular safety improvements, landscape, streetscape and design elements that work collectively and serve to enhance the transportation experience by improving aesthetic and environmental aspects of our transportation infrastructure.

The preliminary project breakdown highlights a half mile radius around the I - 55/I - 74 interchange, specifically between Wylie Dr. and Martin Luther King Dr. on Market St. As proposed, the scope of work serves to improve existing sidewalks, add pedestrian crosswalks at major intersections, and to plant an abundance of trees, shrubs and perennial plants. The installation of two (2) Municipal Gateway Signs along with four (4) Tertiary Way Finding Signs that allow travelers to more easily connect with local businesses and organizations is part of the scope of work. All elements and materials selected incorporate sustainable, natural, prairieland concepts that promote the "blooming grove" theme and preserve the natural resources and beauty that currently exist. Consideration was given to both surrounding businesses and City resources when respectively determining which types and heights of trees were appropriate and what levels of continuing maintenance and operational costs were deemed suitable.

Future phase enhancements can expand the Market St. gateway or focus on other areas of the community. Additional gateways should be independently reviewed and incorporate the materials and methodology as laid out in the ITEP application. Supplemental elements found within the Context Plan, including the Gateway Monuments, can also be incorporated as sufficient community input is achieved and funding is allocated.

When analyzing this opportunity, staff referenced the City's Strategic Plan to determine what impact this will have on the community and its citizens. The gateways program achieves congruency with fifteen (15) of the sections outlined therein and are as follows:

1. Vision 2025, Principle A: Beautiful City, page 5:
 - Attractive, clean entrances and major corridors
 - Incorporating sustainability concepts and respect for the natural environment in our designs, buildings, developments and policies
 - Well-maintained parks and public green spaces
 - Well-maintained homes, yards and neighborhoods
 - Respect for the heritage of the community and neighborhoods

2. Vision 2025, Principle F: Convenient Connectivity, page 6:
 - State of the art technology and infrastructure connecting businesses and individuals
 - Well-maintained city streets and sidewalks
 - Convenient access to a well maintained interstate system

3. Vision 2025, Principle I: Pride in Bloomington, page 7:
 - Maintaining the unique character and identity of Bloomington

4. Transforming to a “Sustainable City”: A Workable Model for City Leaders: Critical Factors Contributing to Environmental Stewardship, page 11:
 - Preservation of natural resources and beauty
 - Air quality
 - Open Space

5. Transforming to a “Sustainable City”: A Workable Model for City Leaders: Critical Factors Contributing to Community Building, page 13:
 - Working relationships: city, community organizations, schools, faith-based institutions, private sector
 - Effective use of boards, commissions, task forces and committees

6. City of Bloomington Plan: Goal 4: Grow the Local Economy, page 33
 - 2010 Policy Action – Major Corridors Revitalization Strategy – Identified as a High Priority

COMMUNITY GROUPS/INTERESTED PERSONS CONTACTED: A community stakeholder meeting was held on April 23, 2012. Information surrounding the Gateways project, along with invitations for further discussion and collaboration, were extended to representatives from the following organizations: Town of Normal, McLean County, Bloomington-Normal Area Convention and Visitors Bureau, Economic Development Council of the Area, McLean County Chamber of Commerce, West Bloomington Revitalization Project, Illinois Wesleyan University, Illinois State University, Downtown Bloomington Association, Mitsubishi, State Farm, COUNTRY Financial, Afni, Illinois Department of Transportation, McLean County Regional Planning Commission and the McLean County Museum of History. Stakeholder input continues to be a critical factor in this process. As the overall Context Plan from Hitchcock Design Group is being shared directly with the organizations referenced above, the gateways committee will continue to solicit feedback and gain stakeholder approval, provided that the City moves forward with the ITEP application.

FINANCIAL IMPACT: As provided, Phase I is designed and estimated to cost just under \$1,000,000, with eighty percent (80%) or \$800,000 being funded by ITEP and twenty percent (20%) or \$200,000 being covered by the City. Should the application be denied, the City is not committed to moving forward with any aspect of the project. Furthermore, if the application is approved, the City has up to five (5) years to finalize and execute the project. Funding for this project is included in the FY 2013 Capital Improvement Project budget account 40100100-72570.

Respectfully submitted for Council consideration.

Prepared by:

Reviewed by:

Recommended by:

Justine Robinson
Economic Development Coordinator

Barbara J. Adkins
Deputy City Manager

David A. Hales
City Manager

Attachments: Attachment 1. Resolution
Attachment 2. Context Plan
Attachment 3. Project Costs

Motion: That the Illinois Transportation Enhancement Program (ITEP) application for the Gateways project be submitted and the Resolution adopted.

Motion: _____ Seconded by: _____

	Aye	Nay	Other		Aye	Nay	Other
Alderman Stearns				Alderman McDade			
Alderman Mwilambwe				Alderman Anderson			
Alderman Fazzini				Alderman Schmidt			
Alderman Sage				Alderman Fruin			
Alderman Purcell							
				Mayor Stockton			

RESOLUTION NO. 2012 - _____

**A RESOLUTION AUTHORIZING THE APPLICATION
BY THE CITY OF BLOOMINGTON
FOR ITEP FUNDING FOR A GATEWAYS PROJECT**

WHEREAS, the City of Bloomington is a home rule unit of local government with authority to legislate in matters concerning its local government and affairs; and

WHEREAS, it is in the best interests of the health, safety and welfare of the citizens of the City of Bloomington to take reasonable steps to make the major entranceways to the City of Bloomington esthetically pleasing; and

WHEREAS, a “gateways” project of the type described in this preamble would be aided by financial assistance from the State of Illinois; and

WHEREAS, the deadline for applying for such state funding expires on May 29, 2012;

NOW, THEREFORE, BE IT RESOLVED BY THE MAYOR AND CITY COUNCIL FOR THE CITY OF BLOOMINGTON, ILLINOIS:

SECTION ONE: That Deputy City Manager Barb Adkins, and any persons to whom she may delegate such authority, is authorized to take all necessary steps to apply for Illinois Transportation Enhancement Program (ITEP) funding for gateways project as described in the preamble to this Resolution, which is incorporated by reference.

ADOPTED this 14th day of May, 2012.

APPROVED this _____ day of May, 2012

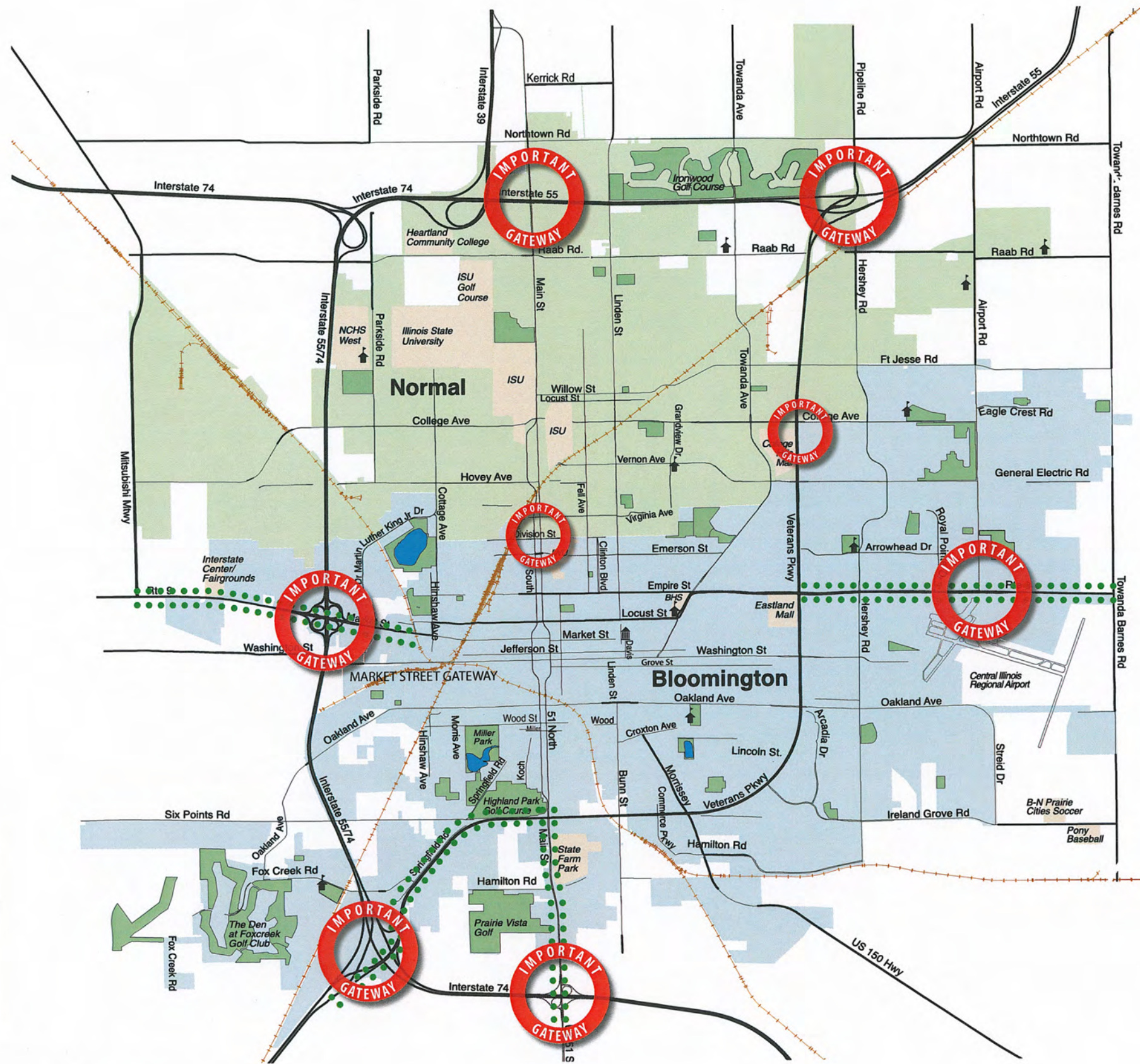
APPROVED:

Mayor of the City Council of Bloomington, Illinois

ATTEST:

City Clerk

(Seal)



Key

- Corporate Limits
- Roads
- Corridor Improvements
- Gateway Improvements



Overall Context Plan Bloomington Gateways

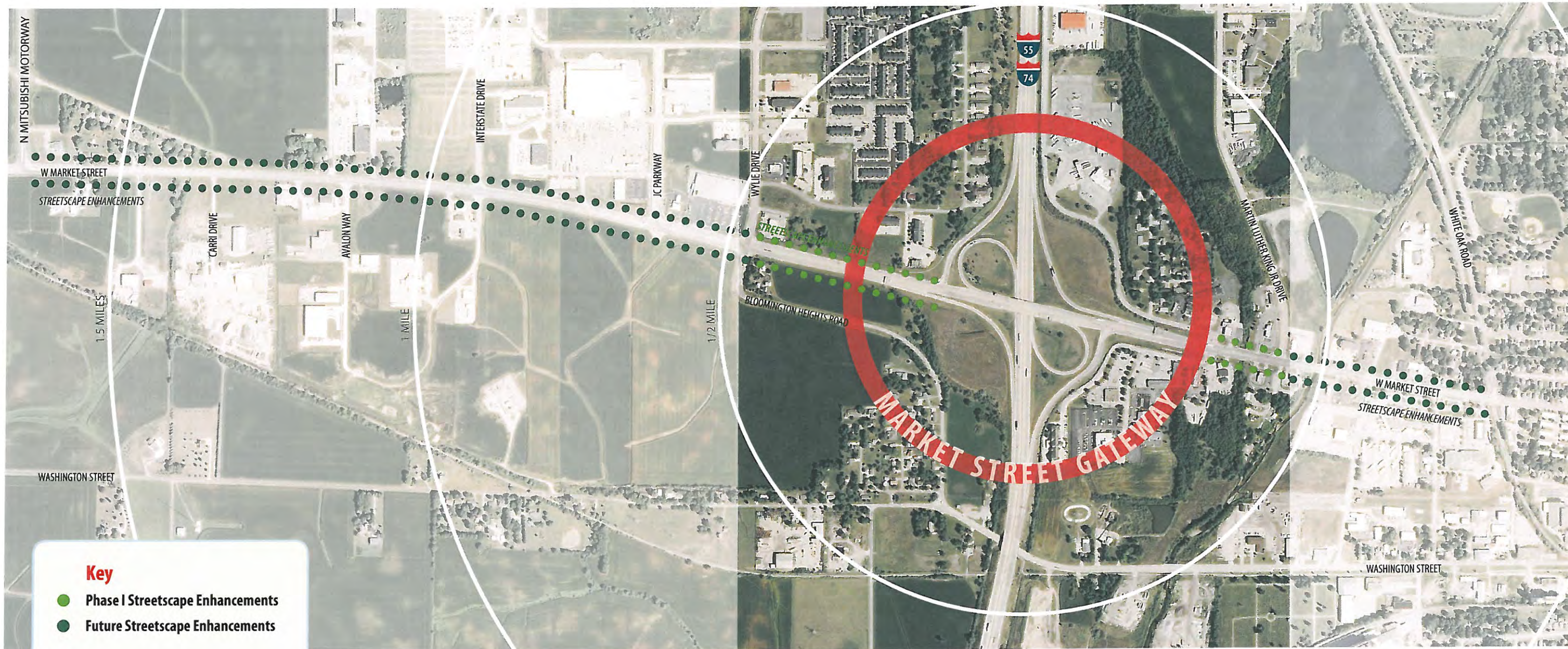
Bloomington, Illinois



PREPARED FOR:
City of Bloomington

ISSUE DATE: May 14, 2012
PROJECT NUMBER: 03-1003-003-01-02
All drawings are preliminary and subject to change.
© 2012 Hitchcock Design Group

← FUTURE PHASE ENHANCEMENTS | FIRST PHASE ENHANCEMENTS | FUTURE PHASE ENHANCEMENTS →



Key

- Phase I Streetscape Enhancements
- Future Streetscape Enhancements

Gateway Improvements



Market Street Gateway Enhancements

Bloomington Gateways

Bloomington, Illinois



NORTH



ISSUE DATE: May 14, 2012
 PROJECT NUMBER: 03-1003-003-01-02
 All drawings are preliminary and subject to change.
 © 2012 Hitchcock Design Group

PREPARED FOR:
 City of
 Bloomington



Key

- Wayfinding Signage
- Municipal Gateway Signage
- Future Gateway Monument
- Phase I Streetscape Enhancements



Phase One Enhancements Bloomington Gateways

Bloomington, Illinois

NORTH

SCALE: 1"=60'

0' 30' 60' 180'

ISSUE DATE: May 14, 2012
PROJECT NUMBER: 03-1003-003-01-02
All drawings are preliminary and subject to change.
© 2012 Hitchcock Design Group

PREPARED FOR:
City of
Bloomington



Key

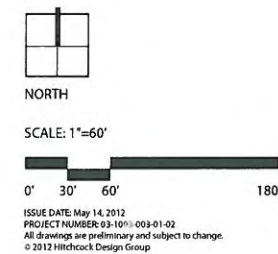
- Wayfinding Signage
- Municipal Gateway Signage
- Shade Tree
- Ornamental Tree

Note:
All pedestrian walks, bike paths, and crosswalks west of I-55 / I-74 interchange to be studied further and included in future plans.

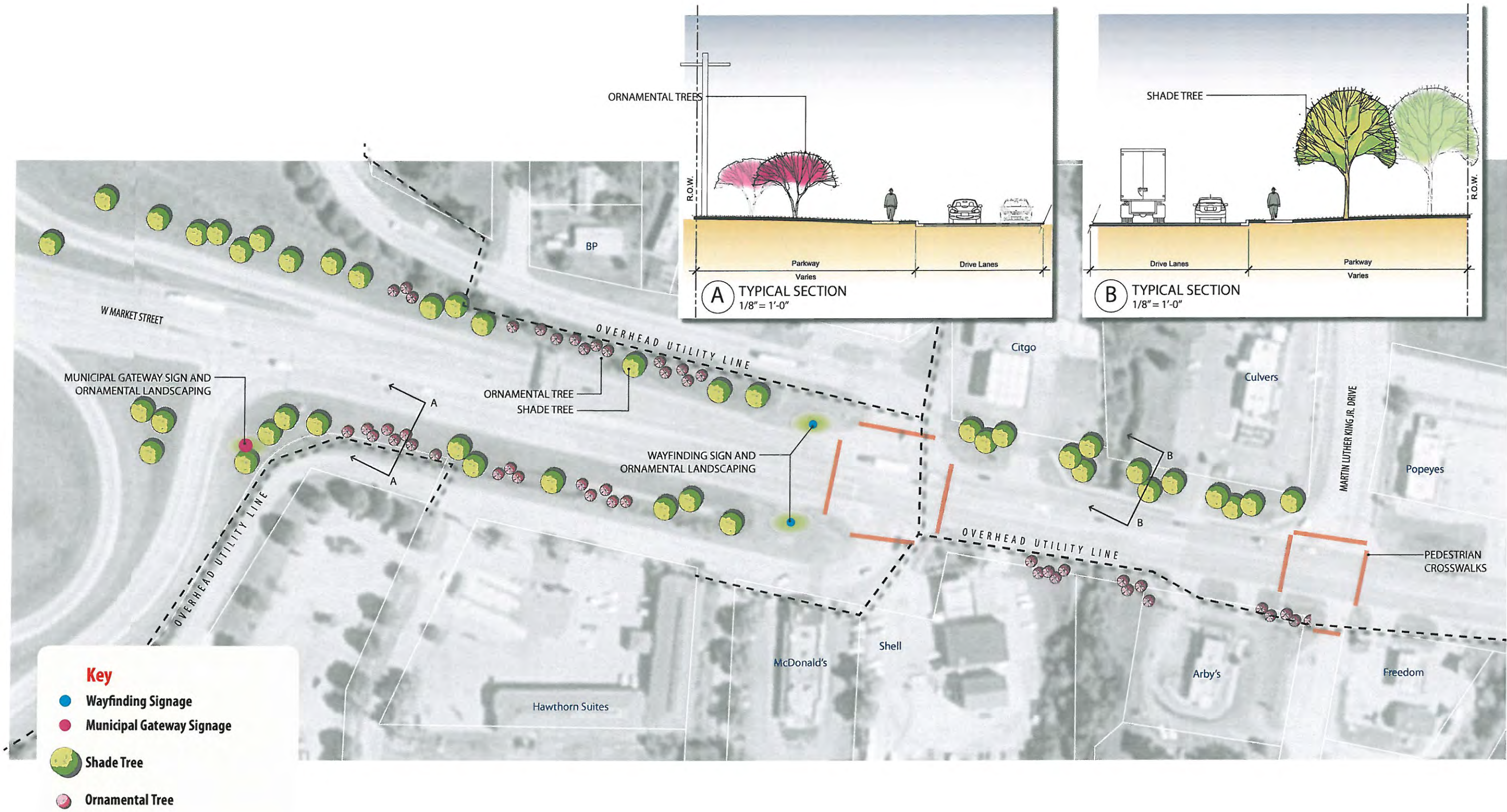


Streetscape Enhancements - West Bloomington Gateways

Bloomington, Illinois

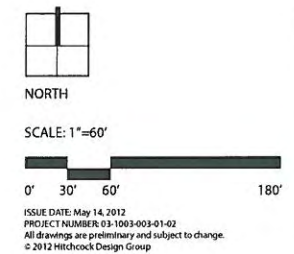


PREPARED FOR:
City of Bloomington



Streetscape Enhancements - East Bloomington Gateways

Bloomington, Illinois

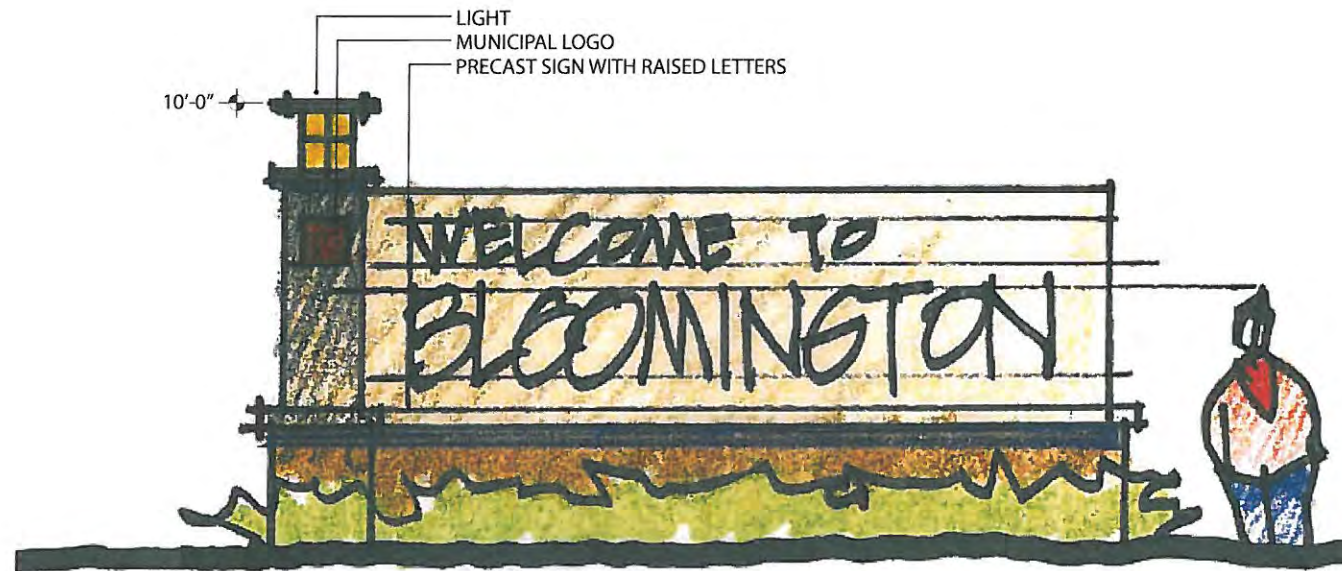


PREPARED FOR:
City of Bloomington

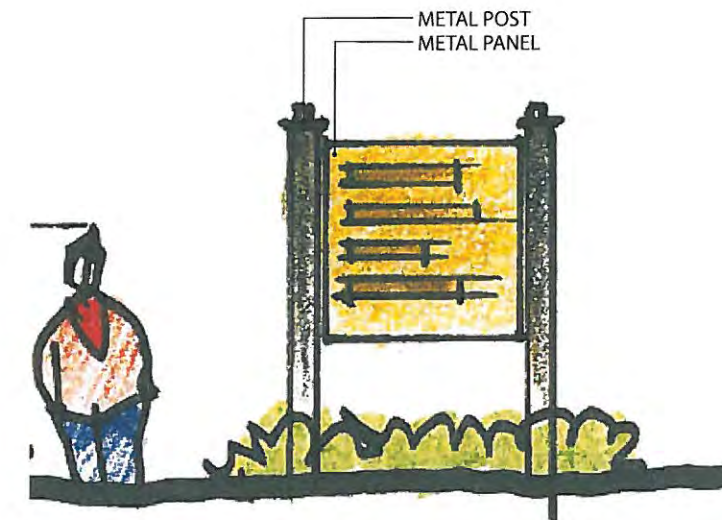
ISSUE DATE: May 14, 2012
PROJECT NUMBER: 03-1003-003-01-02
All drawings are preliminary and subject to change.
© 2012 Hitchcock Design Group

Note:

Signage design indicated is conceptual, and should be considered preliminary. Final signage package design to be completed in the future.



1 CONCEPTUAL MUNICIPAL GATEWAY SIGN
1/2" = 1'-0"



2 CONCEPTUAL WAYFINDING SIGNAGE
1/2" = 1'-0"



Gateway Signage Bloomington Gateways

Bloomington, Illinois



NORTH

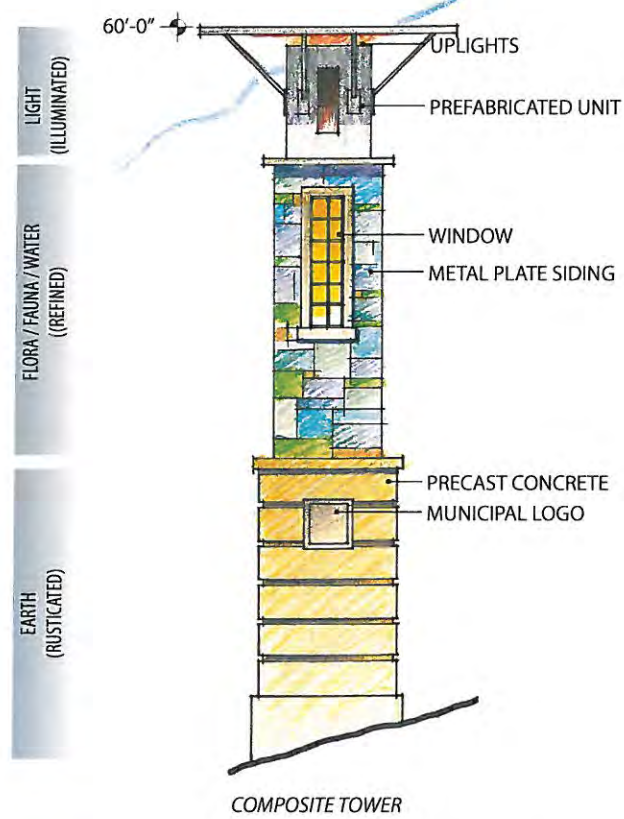


ISSUE DATE: May 14, 2012
PROJECT NUMBER: 03-1003-003-01-11
All drawings are preliminary and subject to change.
© 2012 Hitchcock Design Group

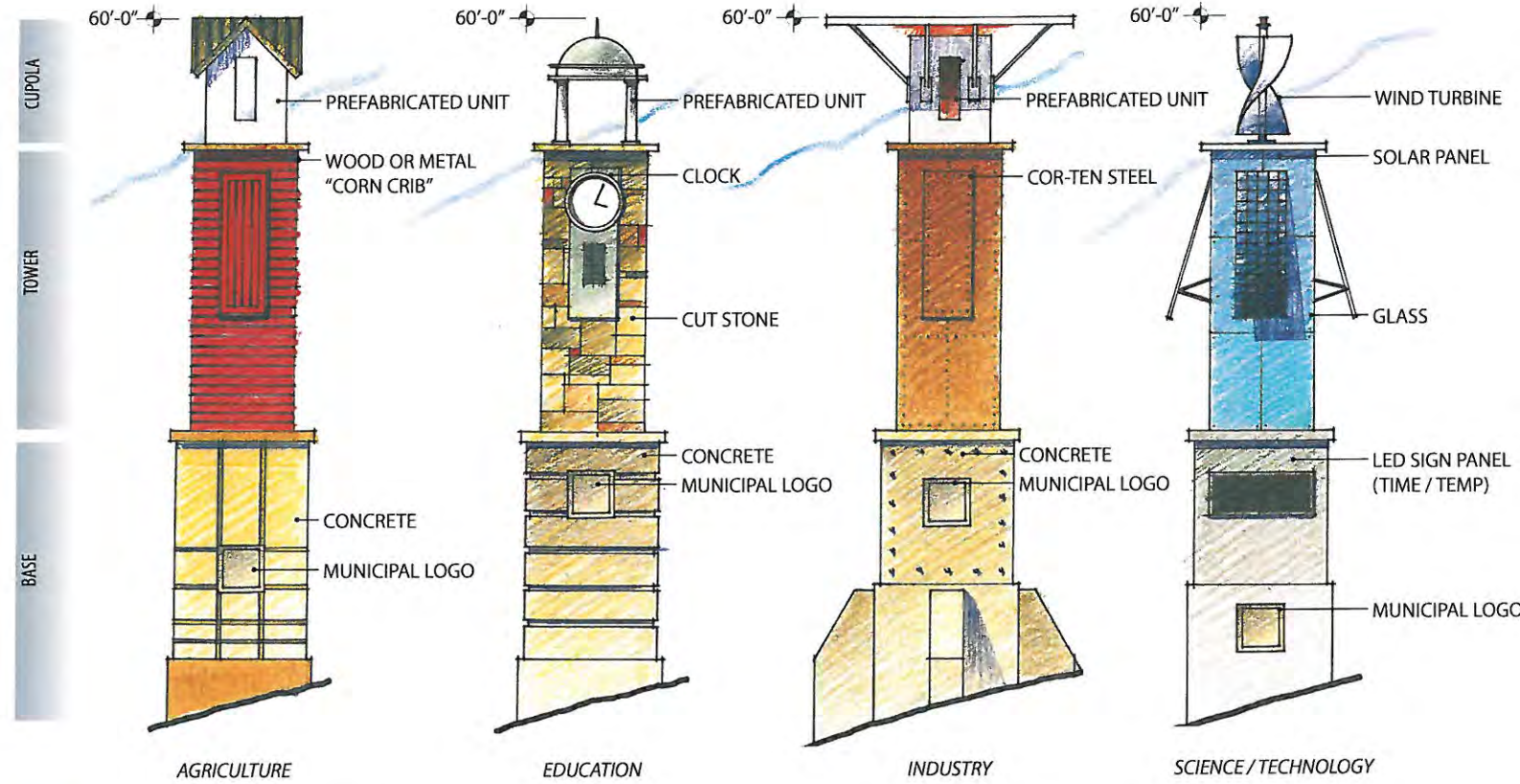
PREPARED FOR:
City of
Bloomington

Note:
Gateway monuments should be considered future improvements.

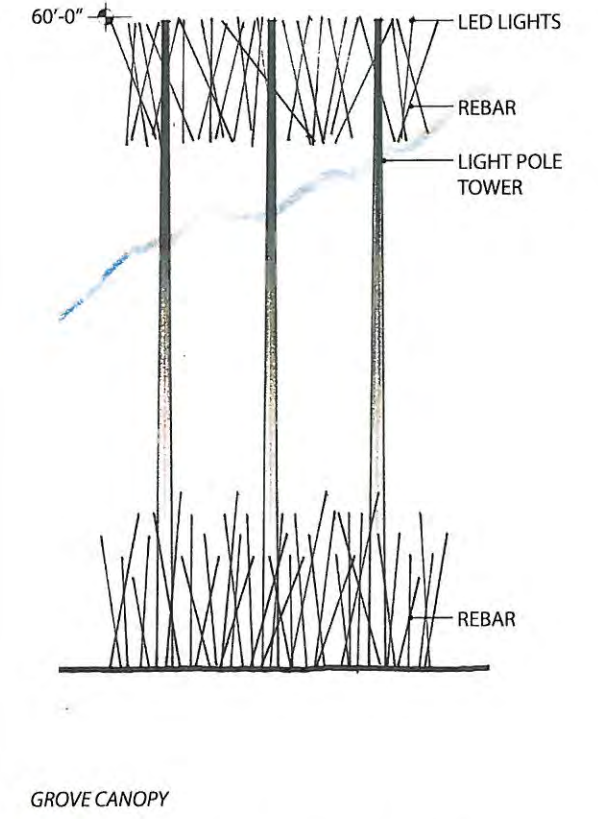
Signage design indicated is conceptual, and should be considered preliminary. Final signage package design to be completed in the future.



1 CONCEPTUAL GATEWAY MONUMENT
OPTION A
1/8" = 1'-0"



2 CONCEPTUAL GATEWAY MONUMENT
OPTION B
1/8" = 1'-0"



3 CONCEPTUAL GATEWAY MONUMENT
OPTION C
1/8" = 1'-0"



Future Gateway Monument Bloomington Gateways

Bloomington, Illinois



NORTH



ISSUE DATE: May 14, 2012
PROJECT NUMBER: 03-1003-003-01-02
All drawings are preliminary and subject to change.
© 2012 Hitchcock Design Group

PREPARED FOR
City of
Bloomington

Project Costs

Project: City of Bloomington - Gateways Enhancement Project

Date: May 11, 2012

Project No.: 03-1003-001-01-01

Prepared by: Hitchcock Design Group

Type of Work	Cost Breakdown by Funding Source			
	Federal Share	Sponsor Share (Local Match)	Ineligible Items	Totals
Construction Costs				
General Conditions	\$ 36,000	\$ 9,000	\$ -	\$ 45,000
Earthwork	\$ 53,400	\$ 13,350	\$ -	\$ 66,750
Landscape	\$ 352,180	\$ 88,045	\$ -	\$ 440,225
Sidewalk & Crosswalks	\$ 76,800	\$ 19,200	\$ -	\$ 96,000
Gateway Signage	\$ 94,000	\$ 23,500	\$ -	\$ 117,500
Other Costs				
Preliminary Engineering I	\$ 61,238	\$ 15,310	\$ -	\$ 76,548
Preliminary Engineering II (10%)	\$ 61,238	\$ 15,310	\$ -	\$ 76,548
Construction Engineering (10%)	\$ 61,238	\$ 15,310	\$ -	\$ 76,548
Total Project Costs	\$ 796,094	\$ 199,024	\$ -	\$ 995,118



ADDENDUM II

BLOOMINGTON CITY COUNCIL AGENDA

MAY 14, 2012

ADDITION TO CONSENT AGENDA

- Item 7L.** **Application for Change of Ownership of Shreeji 12 Inc., d/b/a Bloomington Citgo Quick Mart, located at 1901 W. Market St., for a GPBS liquor license, which will allow the sale of packaged beer and wine only for consumption off the premises seven (7) days week. *Liquor Commission Memorandum regarding Shreeji 12 Inc., d/b/a Bloomington Citgo Quick Mart attached.***

Memo

To: Stephen Stockton, Marabeth Clapp, Steve Petersen and Mark Gibson,
Commissioners

From: Rich Buchanan and Geoff Tompkins, Commissioners

CC: George Boyle, Asst. Corporation Counsel and Tracey, City Clerk

Date: May 14, 2012

Re: Meeting with Applicant and Spokes person for Bloomington Citgo

Commissioners Buchanan and Tompkins met with Rakesh Kumar Patel, the applicant, and Ray Patel, spokesperson, at the business location on Thursday, May 3, 2012 at 7:30 p.m. The meeting's objectives were to clarify and confirm details of the ownership and operation of the business.

Summation: Both Commissioners attest that Mr. R. K. Patel, the applicant, is appropriately qualified to operate the business based upon several years' current experience managing two (2) licensed establishments in the City. (Main St. Convenience located at 1919 S. Main St., which has held a GPBS/Gasoline, Packaged sales, Beer and wine only, Sunday sales, and a PAS./Packaged sales, All types of alcohol, Sunday Sales, liquor licenses and Famous Liquors located at 1404 E. Empire St. which holds a PAS liquor license.)

Ray Patel, spokesperson, will be involved in the operation of the Citgo Quick Mart to a limited extent. Mr. R. K. Patel will be the full time manager. There will be no ownership and/or operational relationship between Citgo Mart and Famous Liquors.

Per the motion passed at the Commission's April 10, 2012 meeting, this report satisfies the condition resulting in a recommendation to Council that they create a GPBS liquor license for Bloomington Citgo Quick Mart.