



# 2024 STREET & SIDEWALK NETWORK UPDATE

**KEVIN KOTHE, P.E., DIRECTOR OF OPERATIONS &  
ENGINEERING SERVICES / CITY ENGINEER  
CITY COUNCIL – MAY 28, 2024**

# ASPHALT PAVEMENT SURFACE EVALUATION AND RATING (PASER) SYSTEM



**10 NEW**

NEW CONSTRUCTION.



**9 EXCELLENT**

RECENT OVERLAY. LIKE NEW.



**8 VERY GOOD**

MINIMAL SURFACE CRACKING.



**7 GOOD +**

FIRST SIGNS OF AGING. SOME TRAFFIC WEAR WITH 1/4" SURFACE CRACKS. NO PATCHING.



**6 GOOD -**

SHOWS SIGNS OF AGING. OCCASIONAL PATCHING.



**5 FAIR +**

1/2" OPEN SURFACE CRACKS. SURFACE AGING. SOME PATCHING.



**4 FAIR -**

SIGNIFICANT AGING. PATCHING IN FAIR CONDITION. SLIGHT RUTTING.



**3 POOR**

CLOSELY SPACED SURFACE CRACKING. PATCHES IN FAIR TO POOR CONDITION. OCCASIONAL POTHOLES.



**2 VERY POOR**

SEVERE DETERIORATION. EXCESSIVE PATCHING IN POOR CONDITION. NEEDS MAJOR REHABILITATION OR RECONSTRUCTION.



**1 FAILED**

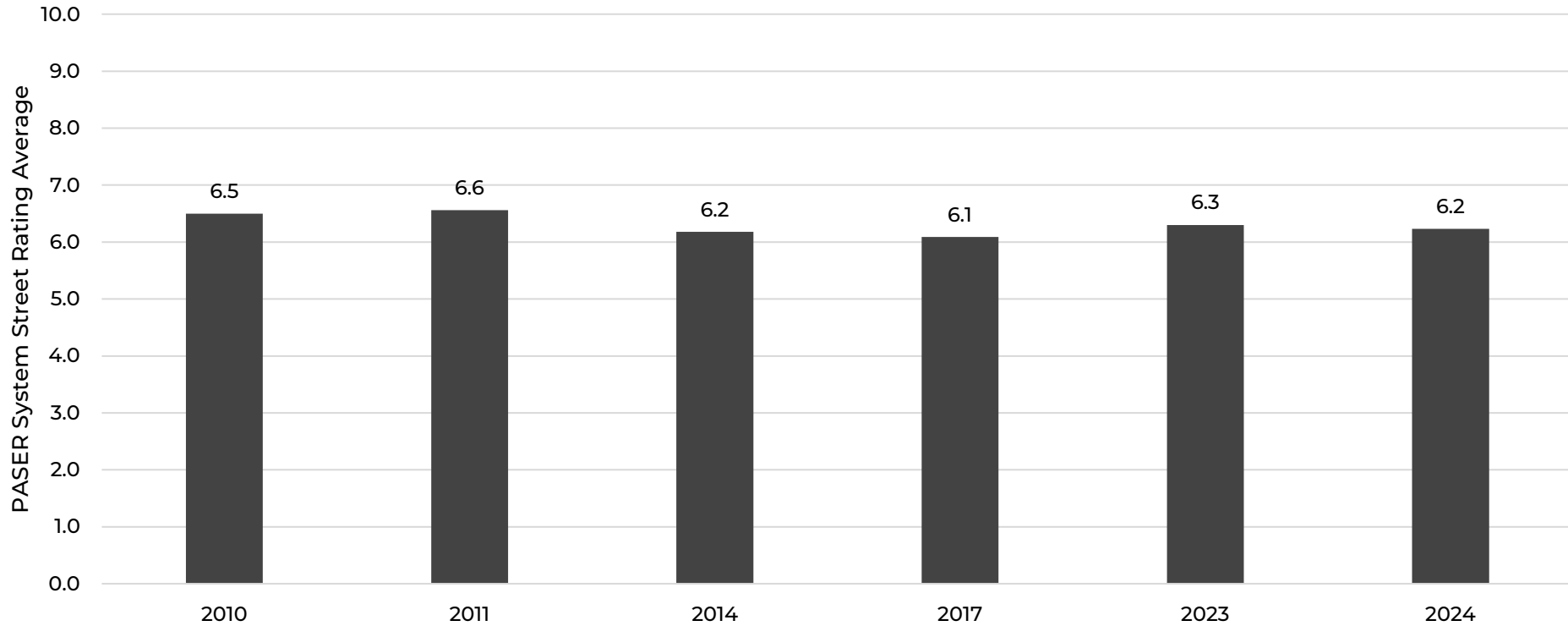
NEEDS TOTAL RECONSTRUCTION



# PASER SYSTEM STREET RATINGS SUMMARY

Surface Rating (Overall Average 6.2)	Functional Class						GRAND TOTAL		
	Minor Arterial Average Rating: 6.4		Collector Average Rating: 6.3		Local Average Rating: 6.2				
	12' Lane Miles	%	12' Lane Miles	%	12' Lane Miles	%	12' Lane Miles	%	Cumulative %
<b>10 NEW</b>	8.8	5.4%	3.3	3.1%	31.8	5.5%	<b>43.8</b>	<b>5.2%</b>	<b>5.2%</b>
<b>9 EXCELLENT</b>	17.4	10.7%	17.8	16.8%	69.6	12.1%	<b>104.7</b>	<b>12.4%</b>	<b>17.6%</b>
<b>8 VERY GOOD</b>	30.5	18.8%	12.9	12.1%	72.3	12.6%	<b>115.7</b>	<b>13.7%</b>	<b>31.4%</b>
<b>7 GOOD +</b>	13.3	8.2%	12.2	11.5%	71.8	12.5%	<b>97.3</b>	<b>11.6%</b>	<b>42.9%</b>
<b>6 GOOD -</b>	30.5	18.8%	14.9	14.0%	85.8	14.9%	<b>131.2</b>	<b>15.6%</b>	<b>58.5%</b>
<b>5 FAIR +</b>	28.5	17.5%	21.1	19.9%	86.4	15.0%	<b>135.9</b>	<b>16.1%</b>	<b>74.6%</b>
<b>4 FAIR -</b>	32.0	19.8%	19.5	18.4%	104.7	18.2%	<b>156.2</b>	<b>18.5%</b>	<b>93.2%</b>
<b>3 POOR</b>	1.2	0.7%	4.4	4.2%	50.6	8.2%	<b>56.2</b>	<b>6.7%</b>	<b>99.8%</b>
<b>2 VERY POOR</b>	0.0	0.0%	0.0	0.0%	1.5	0.3%	<b>1.5</b>	<b>0.2%</b>	<b>100.0%</b>
<b>1 FAILED</b>	0.0	0.0%	0.0	0.0%	0.0	0.0%	<b>0.0</b>	<b>0.0%</b>	<b>100.0%</b>
<b>TOTAL</b>	<b>162.2</b>	<b>100.0%</b>	<b>105.9</b>	<b>100.0%</b>	<b>574.4</b>	<b>100.0%</b>	<b>842.5</b>	<b>100.0%</b>	<b>100.0%</b>

# OVERALL PASER SYSTEM STREET RATING AVERAGE FROM 2010 TO 2024





# 10-POINT SIDEWALK RATING SYSTEM BASED ON PASER



**10 NEW**

BRAND NEW.



**9 EXCELLENT**

1 TO 2 YEARS OLD.



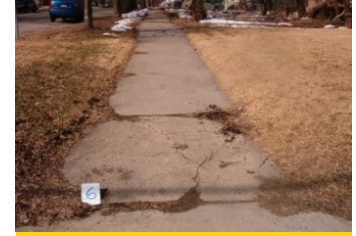
**8 VERY GOOD**

MINOR DEFECTS CAUSED BY WEATHERING. STILL LOOKS ACCEPTABLE.



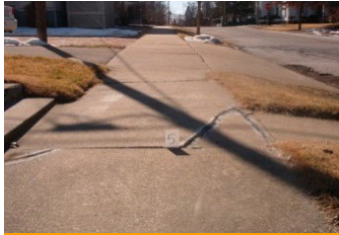
**7 GOOD +**

WEATHERING AND MINOR DEFECTS ARE BECOMING VISIBLE. STILL FUNCTIONAL.



**6 GOOD -**

MINOR DEFECTS. FUNCTIONALITY AND AESTHETICS ARE SLIGHTLY LOWERED. STILL ACCEPTABLE.



**5 FAIR +**

MIGHT BE A HINDRANCE TO SOME PEDESTRIANS, BUT FUNCTIONALITY ACCEPTABLE TO MOST.



**4 FAIR -**

STILL USABLE BY MOST. NOT EASILY NAVIGATED BY RUNNERS, STROLLER USERS, AND WHEELCHAIR USERS. LACKING AESTHETIC APPEAL.



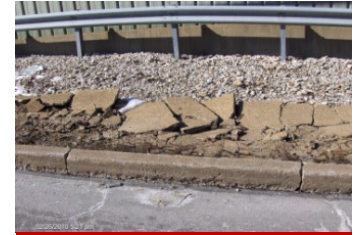
**3 POOR**

FUNCTIONALITY IS ALMOST GONE. NEGATIVE AESTHETICS.



**2 VERY POOR**

NOT FUNCTIONAL. PANELS NEED REPLACING.



**1 FAILED**

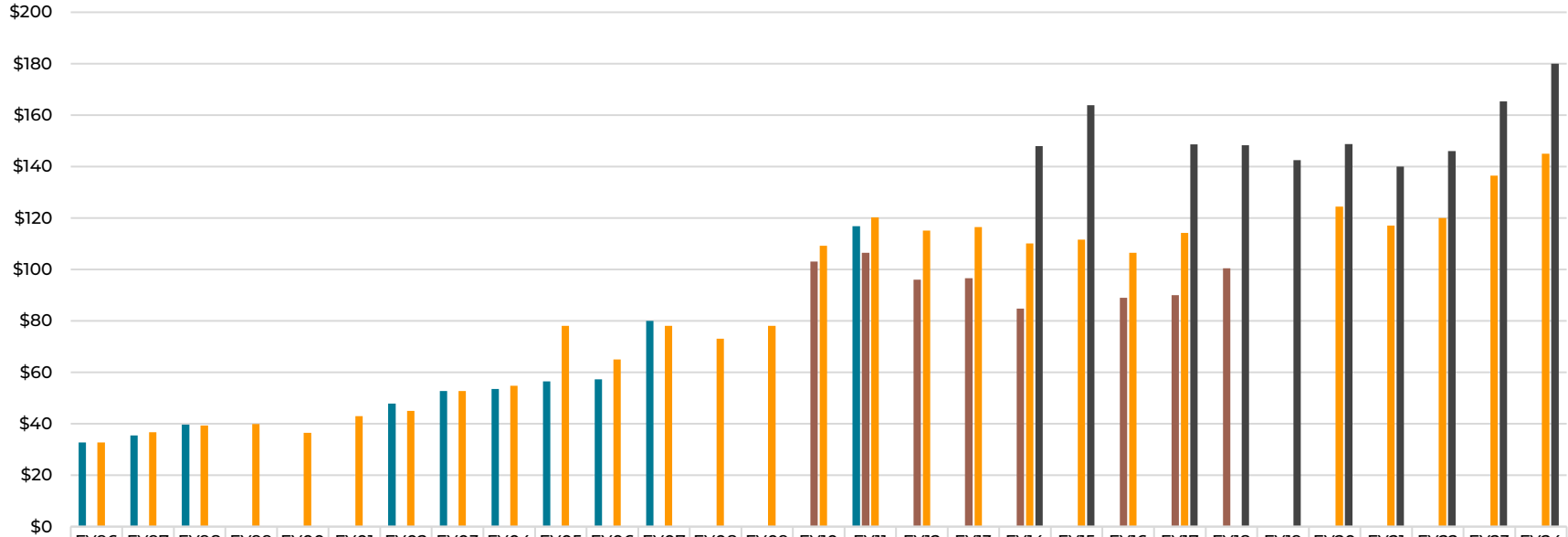
SIDEWALK IS IMPASSABLE. NEEDS TO BE REPLACED.



# 10-POINT SIDEWALK RATINGS SUMMARY

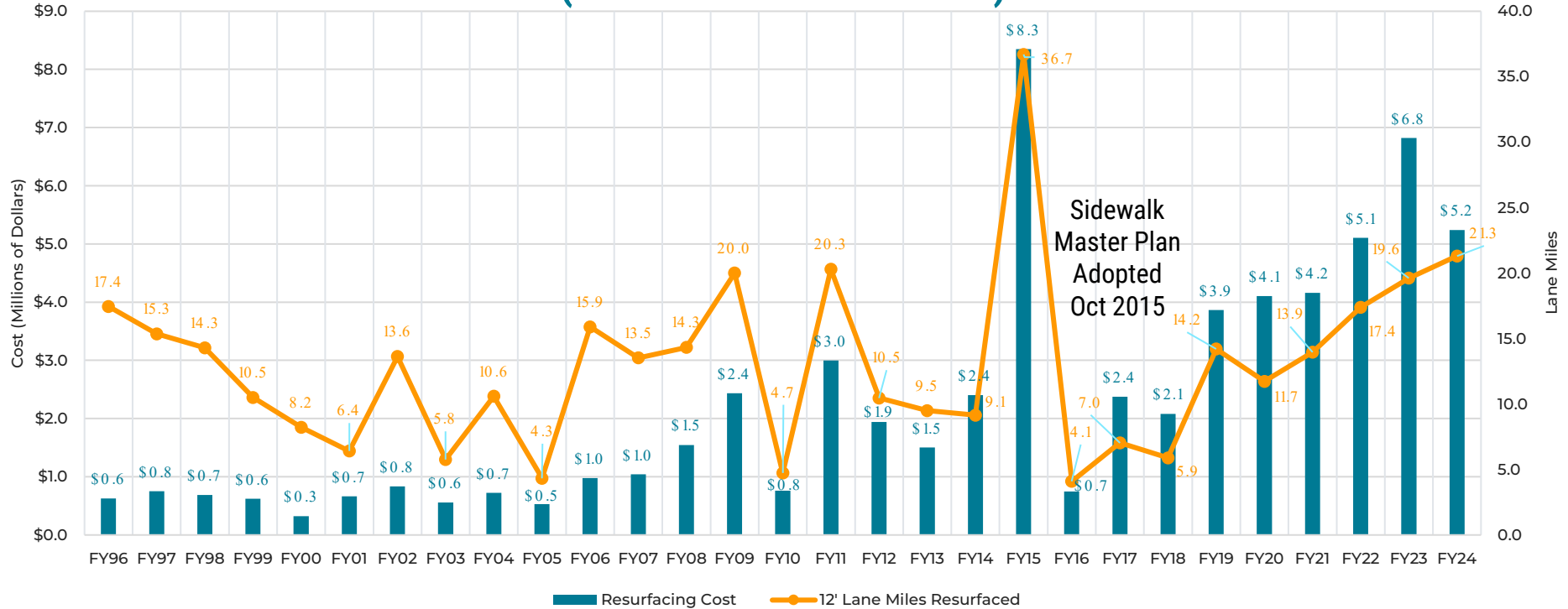
Average Rating: 6.7			
Rating	Parcel Miles	%	Cumulative %
<b>10 NEW</b>	15.2	3.6%	3.6%
<b>9 EXCELLENT</b>	22.4	5.2%	8.8%
<b>8 VERY GOOD</b>	97.6	22.9%	31.7%
<b>7 GOOD +</b>	106.1	24.8%	56.5%
<b>6 GOOD -</b>	99.4	23.3%	79.8%
<b>5 FAIR +</b>	45.1	10.6%	90.4%
<b>4 FAIR -</b>	24.8	5.8%	96.2%
<b>3 POOR</b>	13.2	3.1%	99.2%
<b>2 VERY POOR</b>	2.5	0.6%	99.8%
<b>1 FAILED</b>	0.8	0.2%	100.0%
<b>TOTAL</b>	<b>427.0</b>	<b>100.0%</b>	<b>100.0%</b>

# ASPHALT COST PER TON INSTALLED FROM FY96 TO FY24

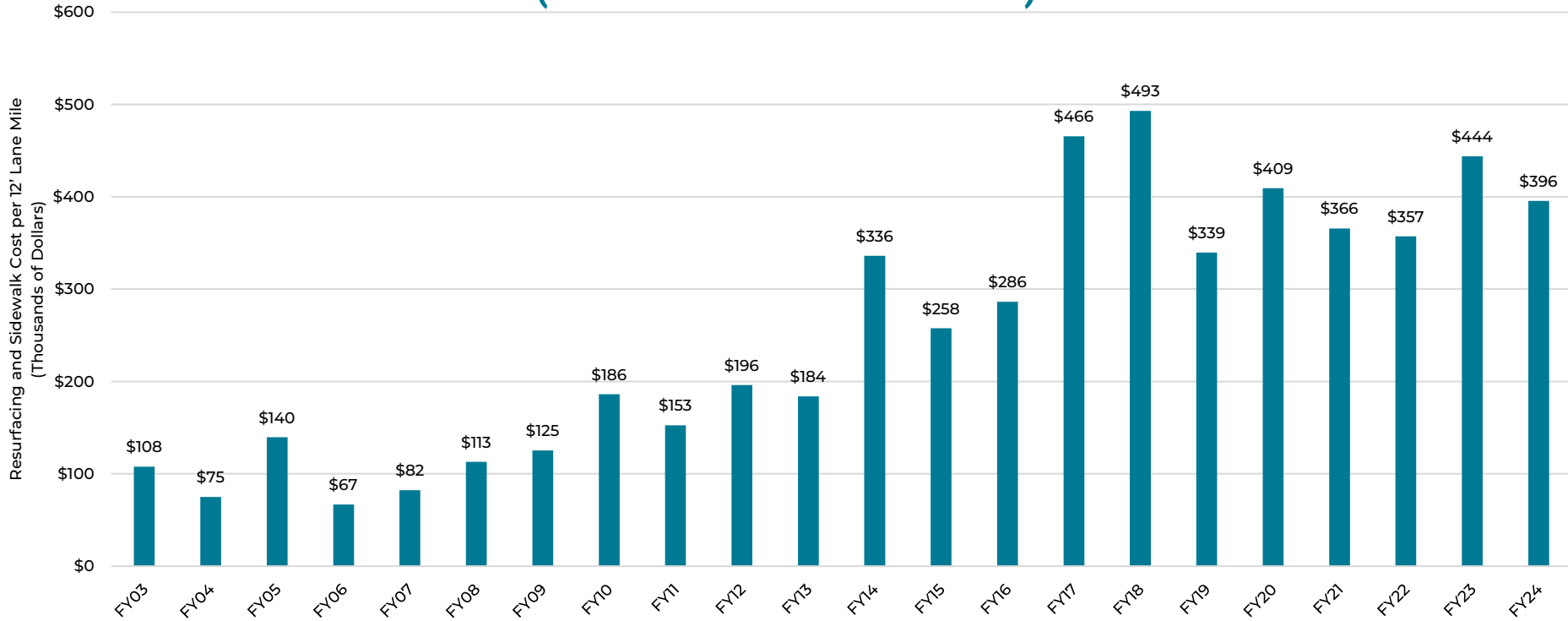


	FY96	FY97	FY98	FY99	FY00	FY01	FY02	FY03	FY04	FY05	FY06	FY07	FY08	FY09	FY10	FY11	FY12	FY13	FY14	FY15	FY16	FY17	FY18	FY19	FY20	FY21	FY22	FY23	FY24
■ MFT \$/Ton	\$33	\$35	\$40				\$48	\$53	\$54	\$57	\$57	\$80				\$117													
■ Patch HMA \$/Ton															\$103	\$106	\$96	\$97	\$85		\$89	\$90	\$100						
■ Resurf. HMA \$/Ton	\$33	\$37	\$39	\$40	\$37	\$43	\$45	\$53	\$55	\$78	\$65	\$78	\$73	\$78	\$109	\$120	\$115	\$116	\$110	\$112	\$106	\$114			\$124	\$117	\$120	\$137	\$145
■ SMA \$/Ton																			\$148	\$164		\$149	\$148	\$143	\$149	\$140	\$146	\$165	\$180

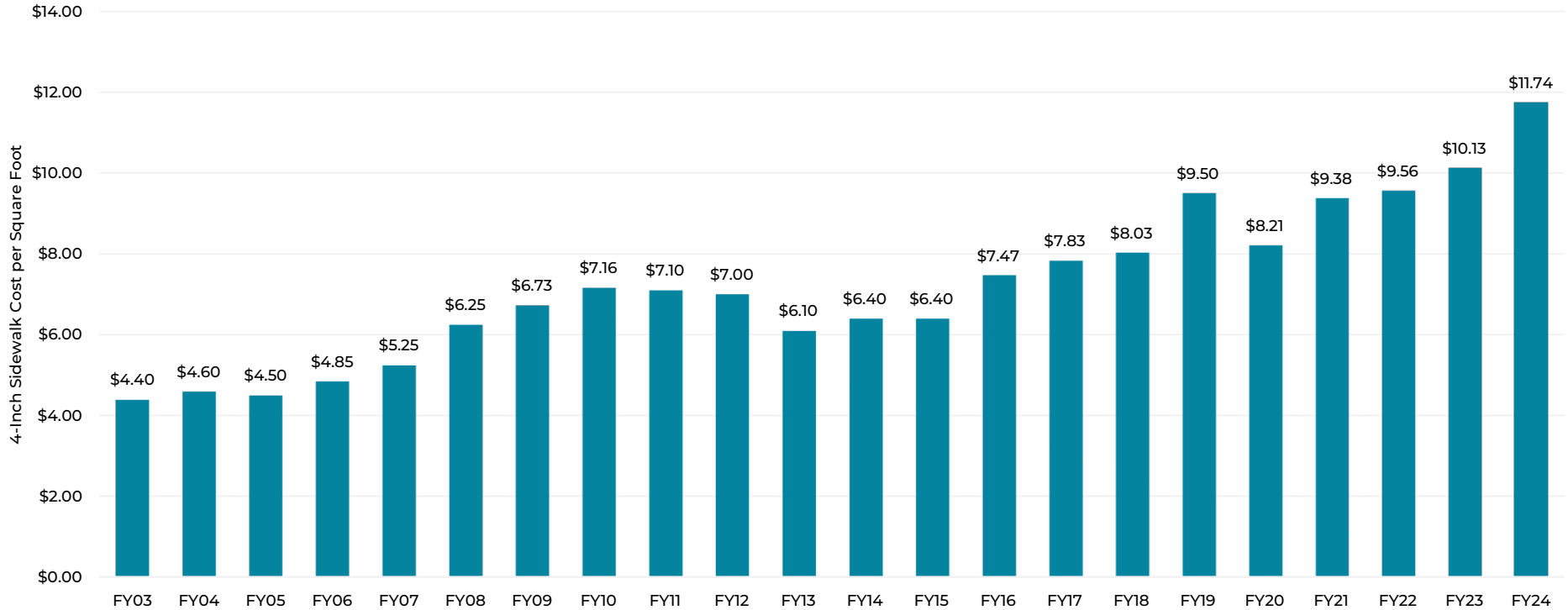
# RESURFACING COST AND 12' LANE MILES RESURFACED FROM FY96 TO FY24 (MILLIONS OF DOLLARS)



# RESURFACING AND SIDEWALK COST PER 12' LANE MILE FROM FY03 TO FY24 (THOUSANDS OF DOLLARS)



# 4-INCH SIDEWALK COST PER SQUARE FOOT FROM FY 2003 TO FY 2024



# PROJECT – SIDEWALK STUDY

## Current State

- ▶ Resolution managed today, via multiple 3rd parties
- ▶ Resident complaints have increased, post-COVID
- ▶ Opportunity to temporarily insource work, to review future responsiveness/efficiency/future cost options

## Project Scope

- ▶ Completion of 6 sidewalk fixes (“jobs”) with varying degrees of difficulty, including rebar application
- ▶ Focus on jobs physically close to one another, to maximize employee productivity – each with direct resident impact
- ▶ 4-6 employees selected, all with previous sidewalk experience
- ▶ Work to begin in June, with projected 30-day completion





# PROJECT – SIDEWALK STUDY

## Data Collected – Key Performance Indicators (KPIs)

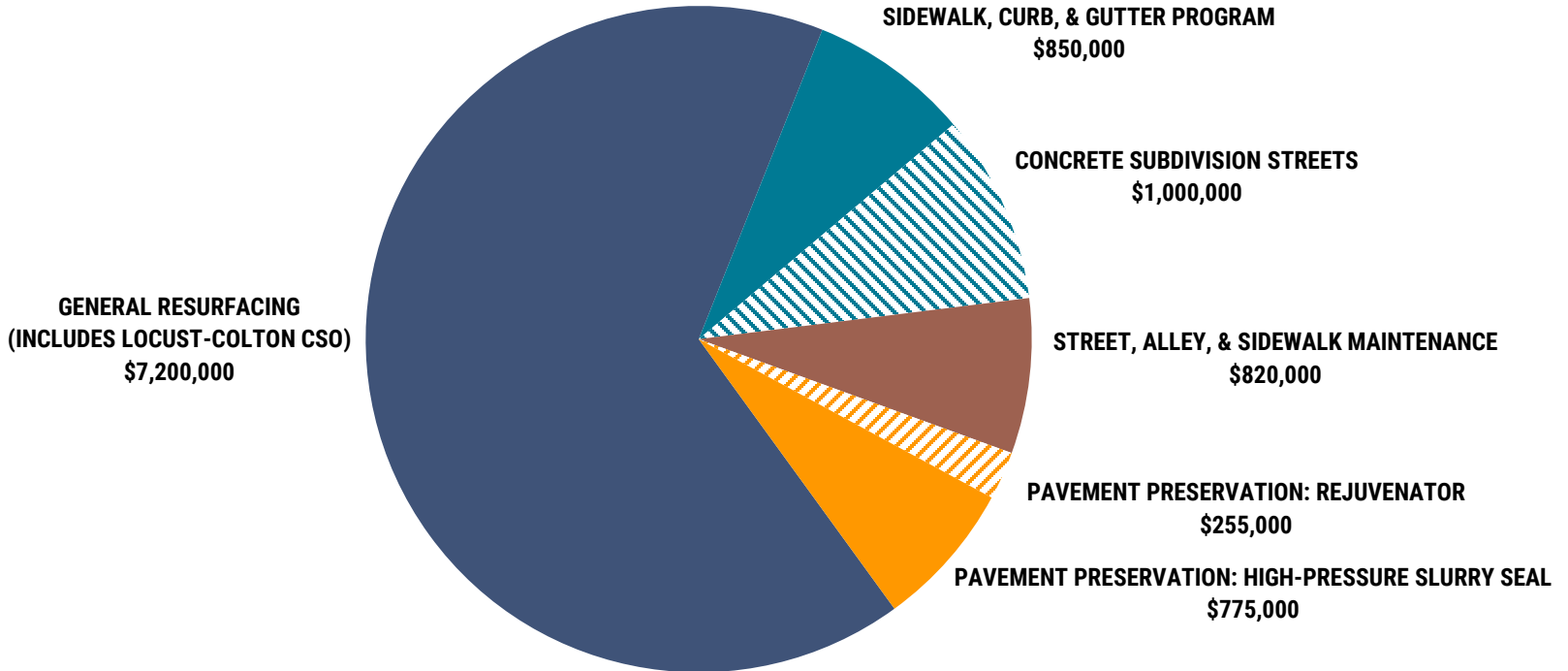
- ▶ Process review – timeliness/efficiency of sidewalk completion
- ▶ Overall cost – total cost of labor + materials, per unit of measure
- ▶ Long-term quality – assessment across future years, to ensure updates made meet durability standards

## Post Project

- ▶ KPI review, as compared to output/cost using 3rd party
- ▶ Key findings update to Council Members
- ▶ Confirm potential next steps



# FY25 PROGRAM ALLOCATIONS



FY25 Asphalt & Concrete Budget: \$10,000,000  
Proposed FY25 Asphalt & Concrete Budget Amendment: \$600,000  
American Rescue Plan Act Funds: \$300,000  
**TOTAL: \$10,900,000**

## FY25 Resurfacing Base and Potential Additive Alternates – 12’ Lane Miles

Program	Minor Arterial	Collector	Local
FY25 Resurfacing Base	12.2	0.0	3.7
Alternate 1: Fort Jesse Rd Additional Work	4.7	0.0	0.0
Alternate 2: GE Road Additional Work	1.9	0.0	0.0
<b>Total Base</b>		<b>15.9</b>	
<b>Total Base + Alternate 1</b>		<b>20.6</b>	
<b>Total Base + Alternate 2</b>		<b>17.8</b>	
<b>Total Base + Alternate 1 + Alternate 2</b>		<b>22.5</b>	

## FY25 Pavement Preservation - 12’ Lane Miles

Program	Minor Arterial	Collector	Local
FY25 High-Pressure Slurry Seal	0.9	0.0	8.5
FY25 Rejuvenator	2.7	1.4	19.5
<b>Subtotal</b>	<b>3.6</b>	<b>1.4</b>	<b>28.0</b>
<b>TOTAL</b>		<b>33</b>	



Monterey Rd

A



Old Jamestown Rd

D



Monterey Rd

B



Old Jamestown Rd

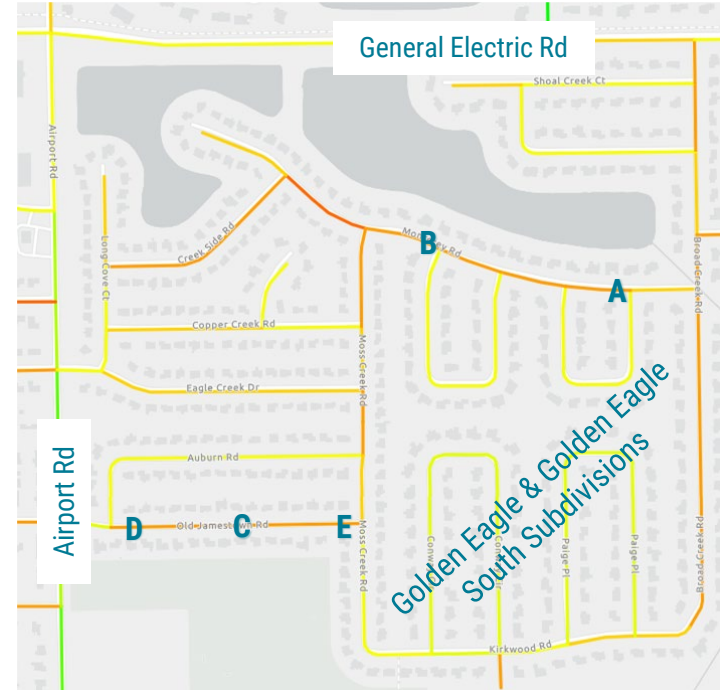
E



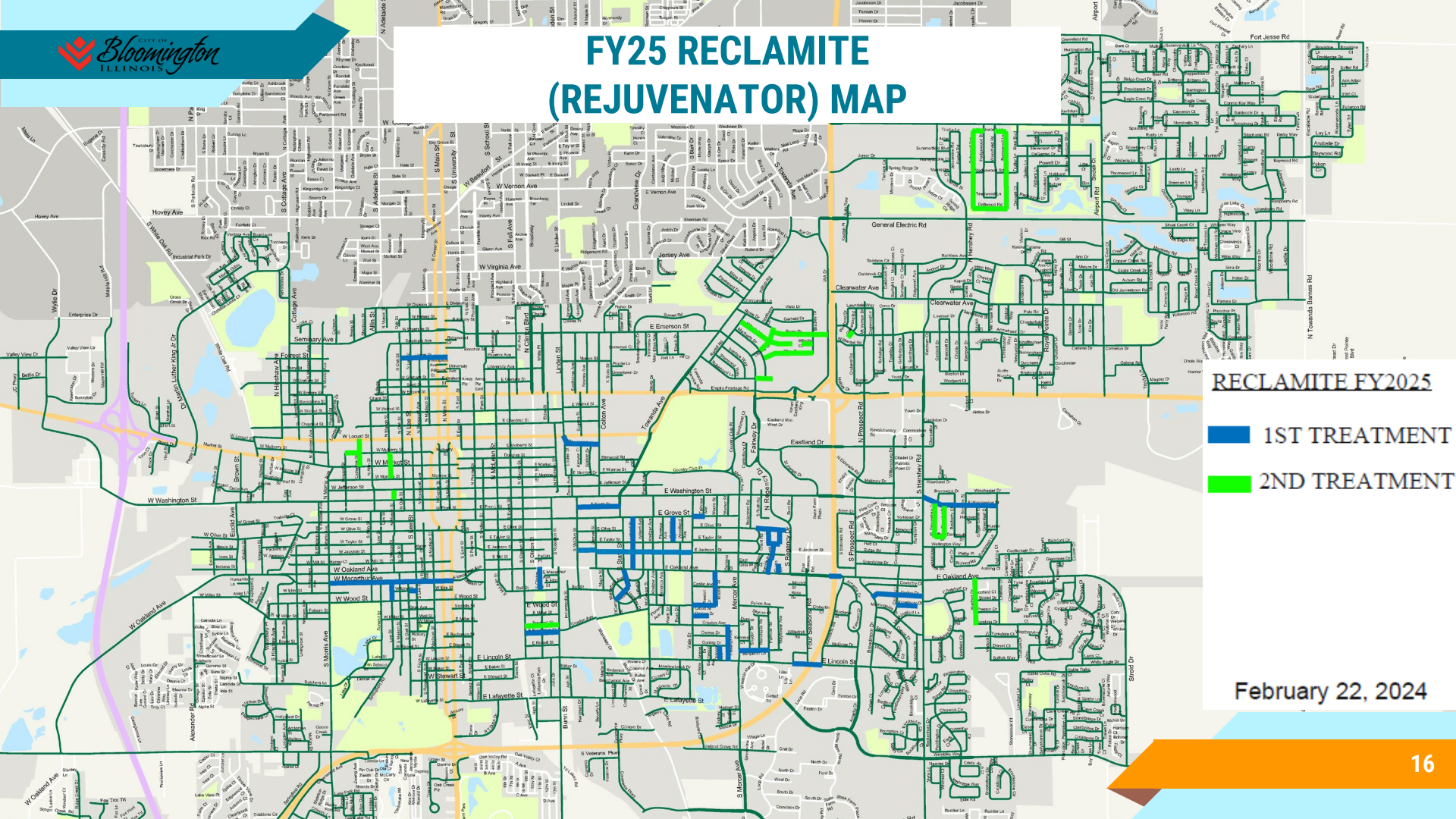
Old Jamestown Rd

C

## FY25 & FY26 Concrete Streets



# FY25 RECLAMITE (REJUVENATOR) MAP



RECLAMITE FY2025

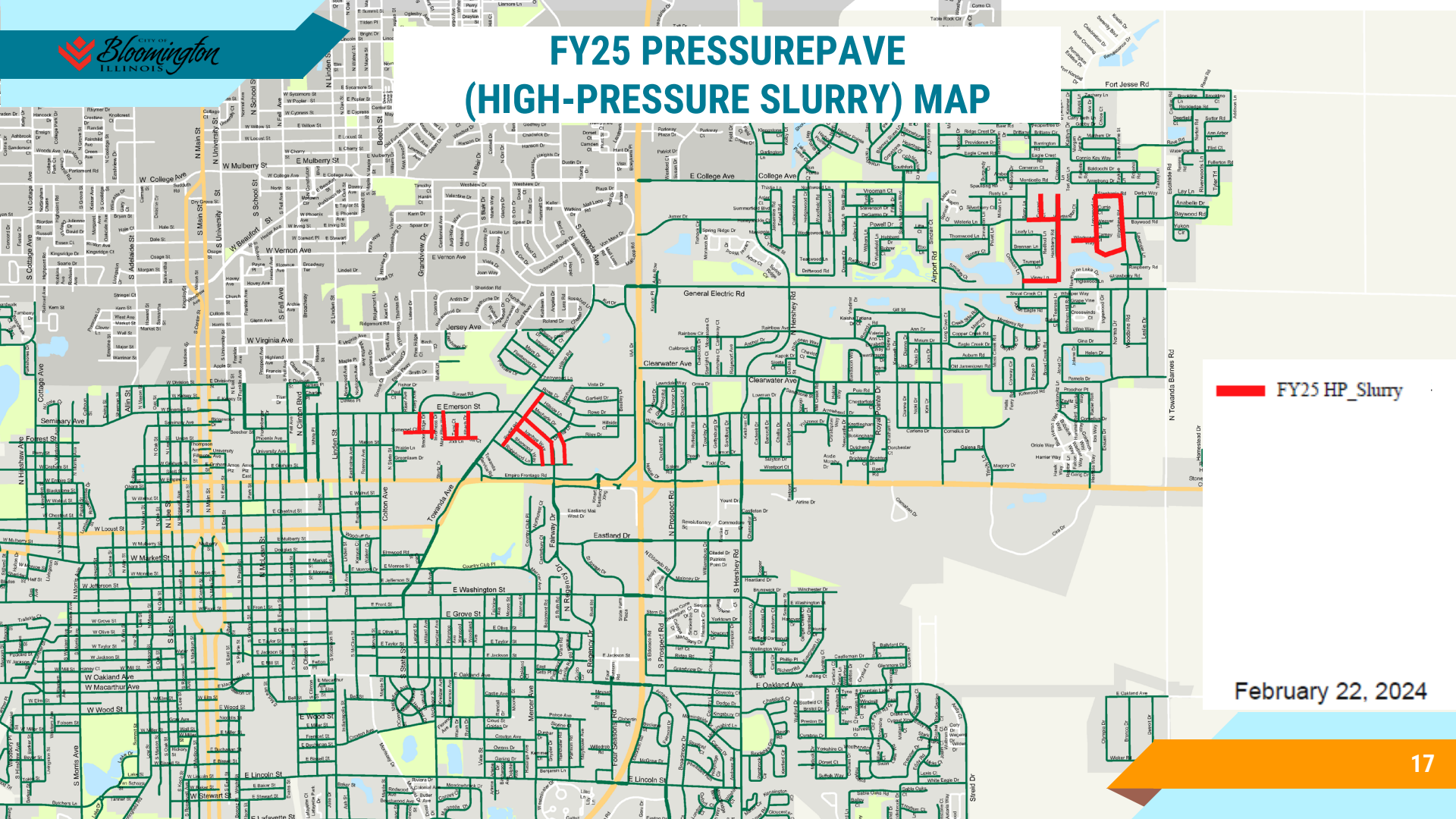
■ 1ST TREATMENT


■ 2ND TREATMENT

February 22, 2024



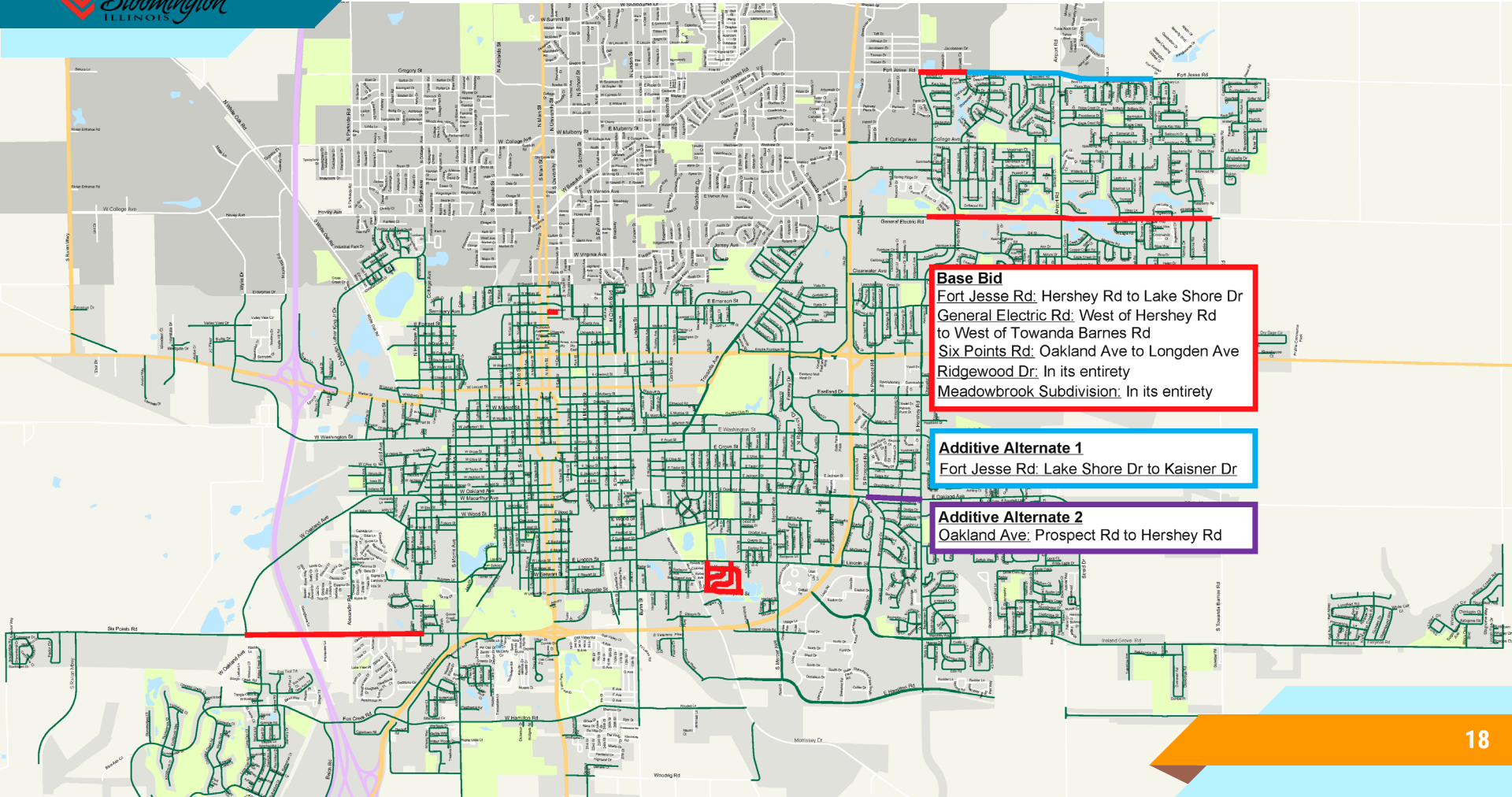
# FY25 PRESSUREPAVE (HIGH-PRESSURE SLURRY) MAP



 FY25 HP\_Slurry

February 22, 2024

# FY25 PROPOSED RESURFACING MAP



**Base Bid**  
Fort Jesse Rd: Hershey Rd to Lake Shore Dr  
General Electric Rd: West of Hershey Rd to West of Towanda Barnes Rd  
Six Points Rd: Oakland Ave to Longden Ave  
Ridgewood Dr: In its entirety  
Meadowbrook Subdivision: In its entirety

**Additive Alternate 1**  
Fort Jesse Rd: Lake Shore Dr to Kaisner Dr

**Additive Alternate 2**  
Oakland Ave: Prospect Rd to Hershey Rd





# FY25 PROJECTED PROGRAM SCHEDULE



**FY25 Street, Sidewalk, & Alley Maintenance**

Spring / Summer 2024



**FY24 CDBG Sidewalk**

Summer / Fall 2024



**FY25 Resurfacing**

Early Fall 2024 / Summer 2025



**FY25 Reclaimite**

Fall 2024



**FY25 PressurePave**

Fall 2024



**FY25 Concrete Streets**

Fall 2024 / Summer 2025



**FY25 Sidewalk**

Fall 2024 / Summer 2025



**FY25 CDBG Sidewalk**

Summer / Fall 2025



# THANKS!

Any questions?

Kevin Kothe, P.E.

Director of Operations & Engineering Services /  
City Engineer

More Info: [www.bloomingtonstreets.com](http://www.bloomingtonstreets.com)