



ASPHALT & CONCRETE UPDATE

**KEVIN KOTHE, P.E., DIRECTOR OF OPERATIONS &
ENGINEERING SERVICES / CITY ENGINEER
CITY COUNCIL - OCTOBER 9, 2023**



PROJECT STATUS

FY23 Phase I Resurfacing

Completed in September,
pending punchlist

FY23 Phase II Resurfacing

Starting this week

FY23 Phases I & II Sidewalk

Completed in August and
September

FY24 Reclamite

Starting next week

FY24 PressurePave

Completed in August

FY24 Chip Seal

Completed in September



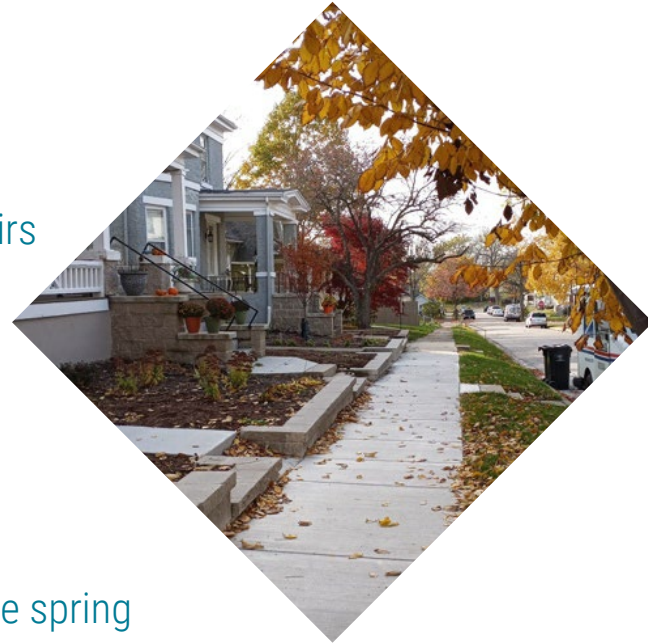
CDBG SIDEWALK PROJECTS

Current contract under construction (\$184,000)

- ▶ 1000 block of W. Market St.
 - ▶ Retaining wall, sidewalk, driveway, & ramp repairs
- ▶ 800-1100 block of W. Front St.
 - ▶ Curb, sidewalk, driveway, & alley repairs

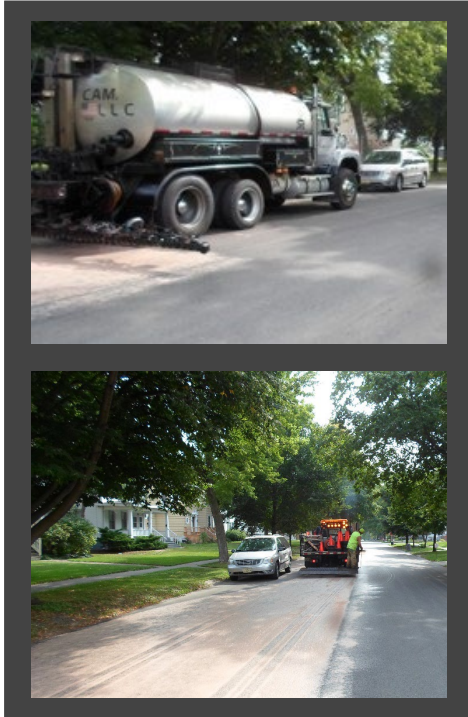
Upcoming contract (\$90,000)

- ▶ Continuation of W. Front St. repairs
- ▶ Will likely be bid later this year with construction in the spring



FY24 PAVEMENT PRESERVATION

RECLAMITE



PRESSUREPAVE



CHIP SEAL



FY23 RESURFACING & SIDEWALKS

SIDEWALKS



RESURFACING



CDBG SIDEWALKS



FY24 ASPHALT & CONCRETE FUNDING

GENERAL RESURFACING – PHASE II
\$2,088,153 (est.)

SIDEWALK, CURB, & GUTTER PROGRAM – PHASE I
\$2,383,347

PROJECT STATUS

AWARDED

CURRENT CONSIDERATION

FUTURE CONSIDERATION

SIDEWALK, CURB, & GUTTER PROGRAM – PHASE II
\$400,000 (est.)

STREET, ALLEY, & SIDEWALK MAINTENANCE
\$300,000

PAVEMENT PRESERVATION: CHIP SEAL
\$126,670

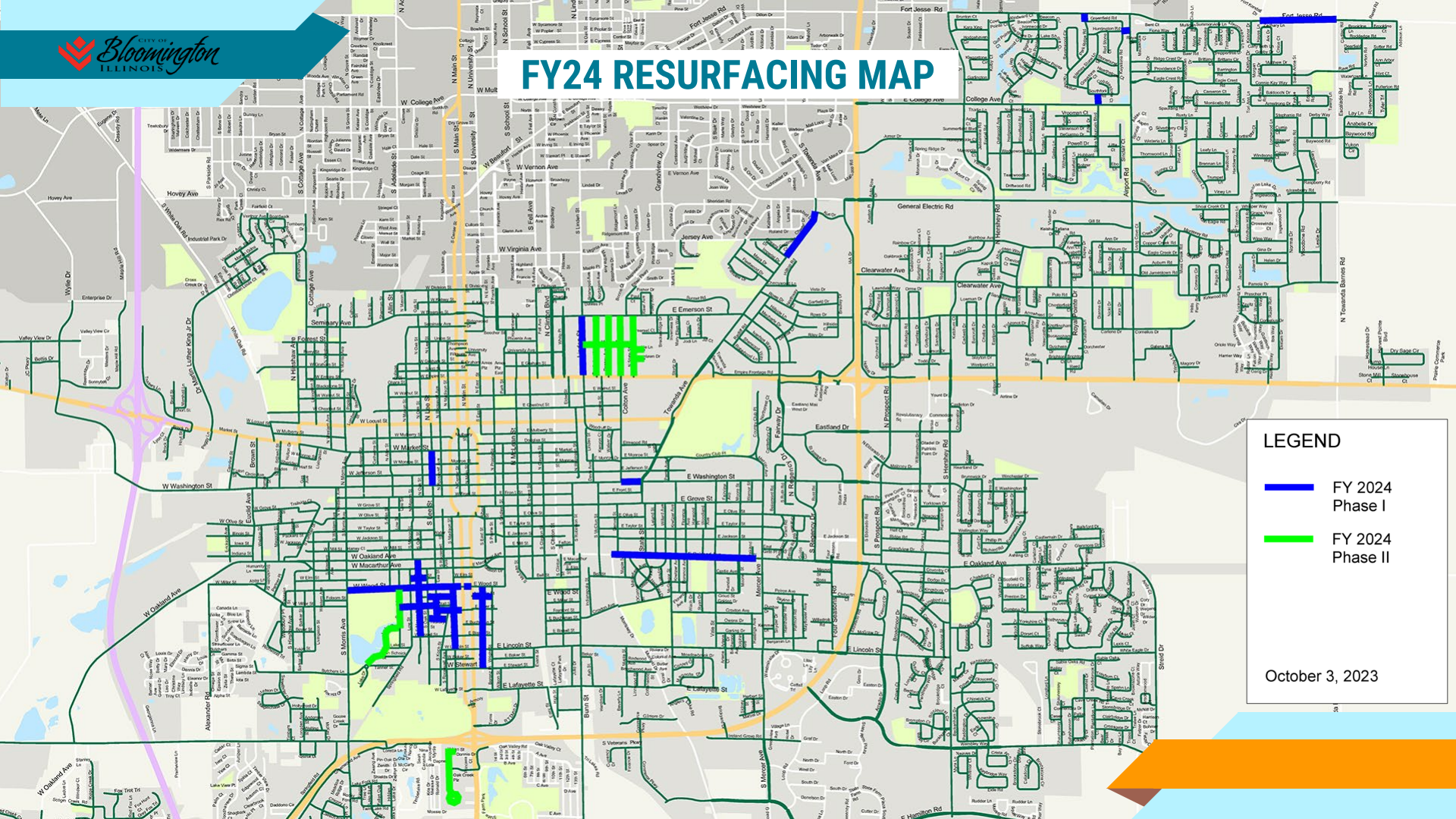
PAVEMENT PRESERVATION: REJUVENATOR
\$91,019

PAVEMENT PRESERVATION: HIGH-PRESSURE SLURRY SEAL
\$570,991



GENERAL RESURFACING – PHASE I
\$4,039,820

TOTAL: \$10,000,000

FY24 RESURFACING MAP

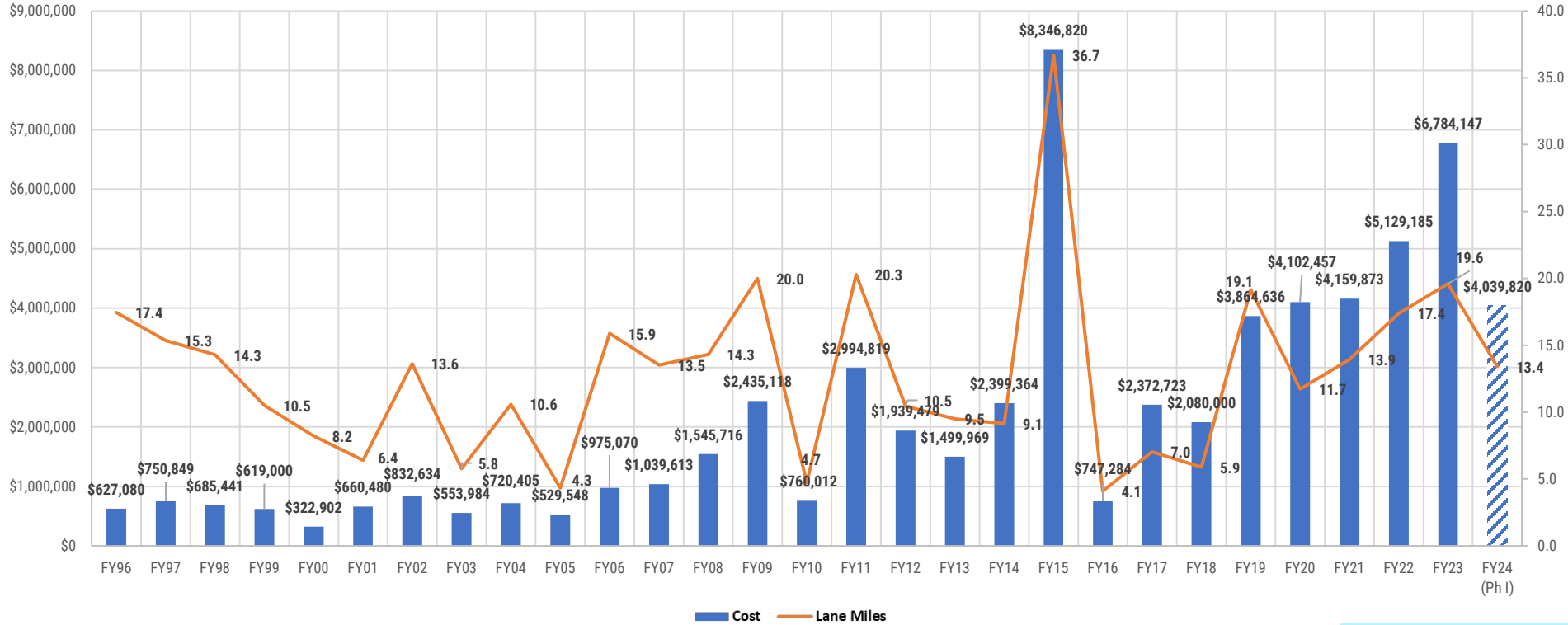


LEGEND

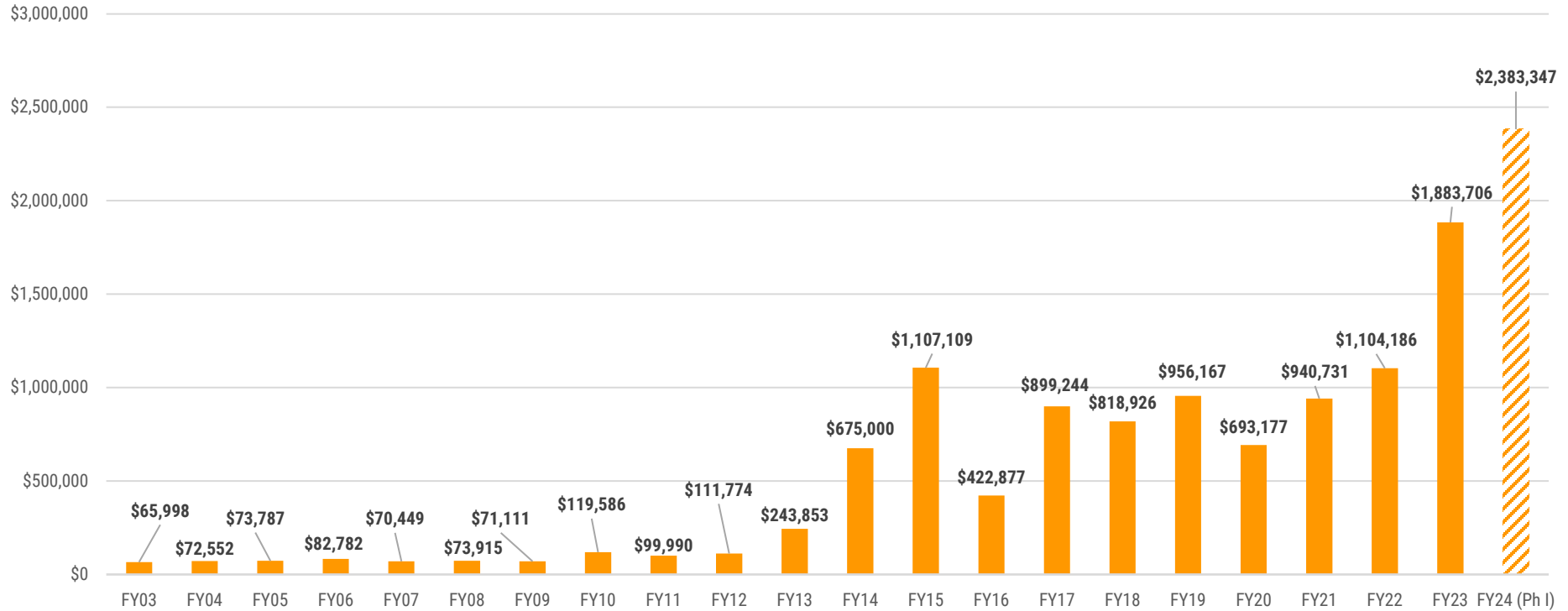
-  FY 2024 Phase I
-  FY 2024 Phase II

October 3, 2023

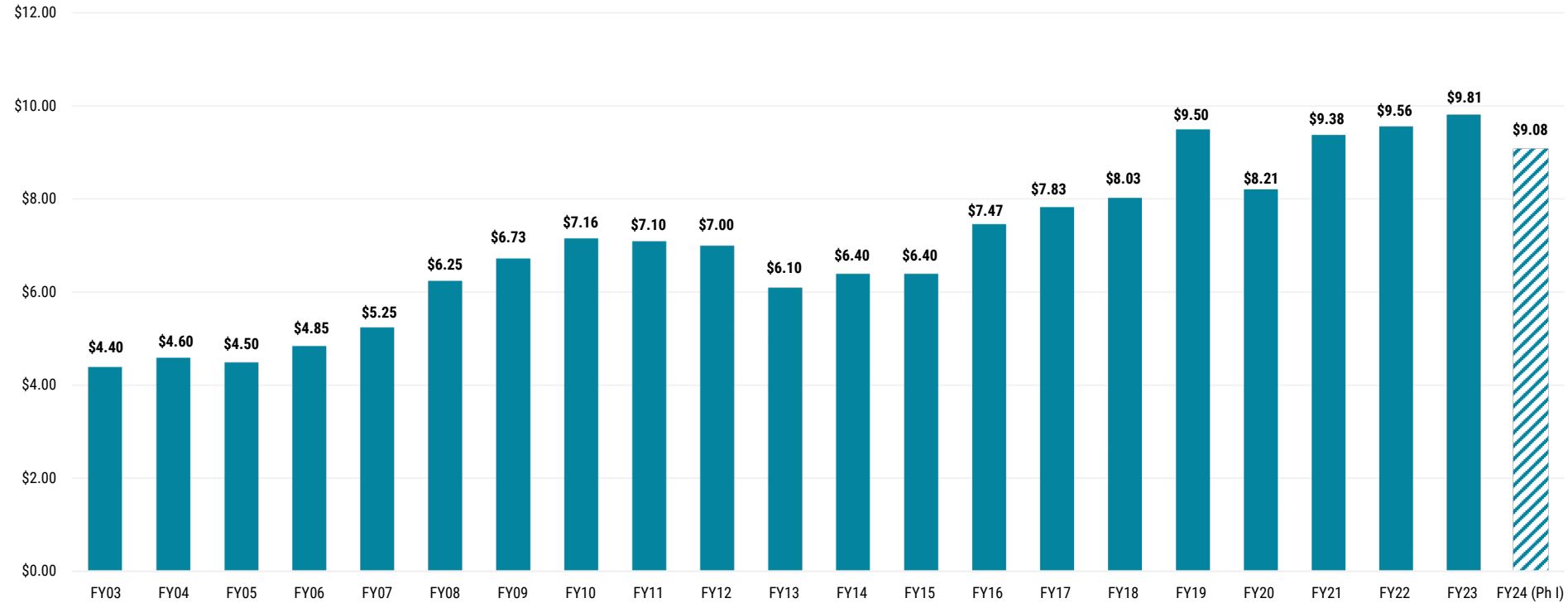
HISTORICAL RESURFACING COST & LANE MILES FROM FY 1996 TO FY 2024 (PHASE I)



SIDEWALK PROGRAM HISTORICAL EXPENSES FROM FY 2003 TO FY 2024 (PHASE I)



SIDEWALK COST PER SQUARE FOOT FROM FY 2003 TO FY 2024 (PHASE I)



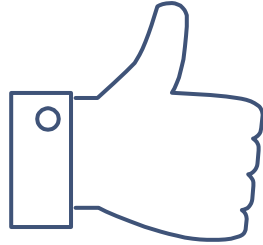
Asphalt PASER System Rating

SURFACE RATING	GENERAL CONDITION
10 NEW	NEW CONSTRUCTION
9 EXCELLENT	RECENT OVERLAY. LIKE NEW.
8 VERY GOOD	MINIMAL SURFACE CRACKING.
7 GOOD +	FIRST SIGNS OF AGING. SOME TRAFFIC WEAR WITH 1/4" SURFACE CRACKS. NO PATCHING.
6 GOOD -	SHOWS SIGNS OF AGING. OCCASIONAL PATCHING.
5 FAIR +	1/2" OPEN SURFACE CRACKS. SURFACE AGING. SOME PATCHING.
4 FAIR -	SIGNIFICANT AGING. PATCHING IN FAIR CONDITION. SLIGHT RUTTING.
3 POOR	CLOSELY SPACED SURFACE CRACKING. PATCHES IN FAIR TO POOR CONDITION. OCCASIONAL POTHOLES.
2 VERY POOR	SEVERE DETERIORATION. EXCESSIVE PATCHING IN POOR CONDITION. NEEDS MAJOR REHABILITATION OR RECONSTRUCTION
1 FAILED	NEEDS TOTAL RECONSTRUCTION.



Decision Optimization Technology





THANKS!

Any questions?

Kevin Kothe, P.E.

Director of Operations & Engineering Services /
City Engineer

More Info: www.bloomingtonstreets.com