

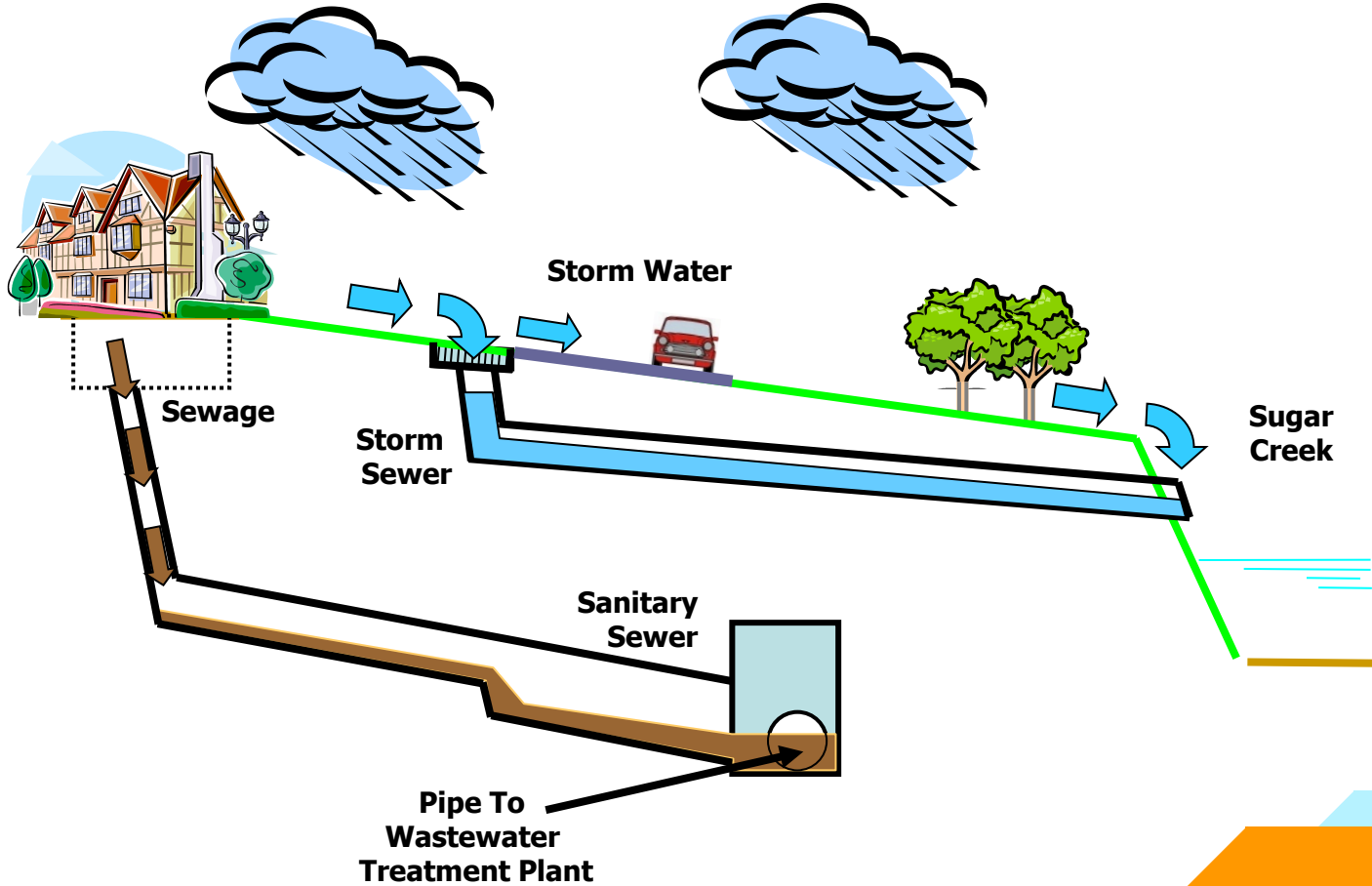


LOCUST / COLTON CSO PHASES 8 & 9 DESIGN

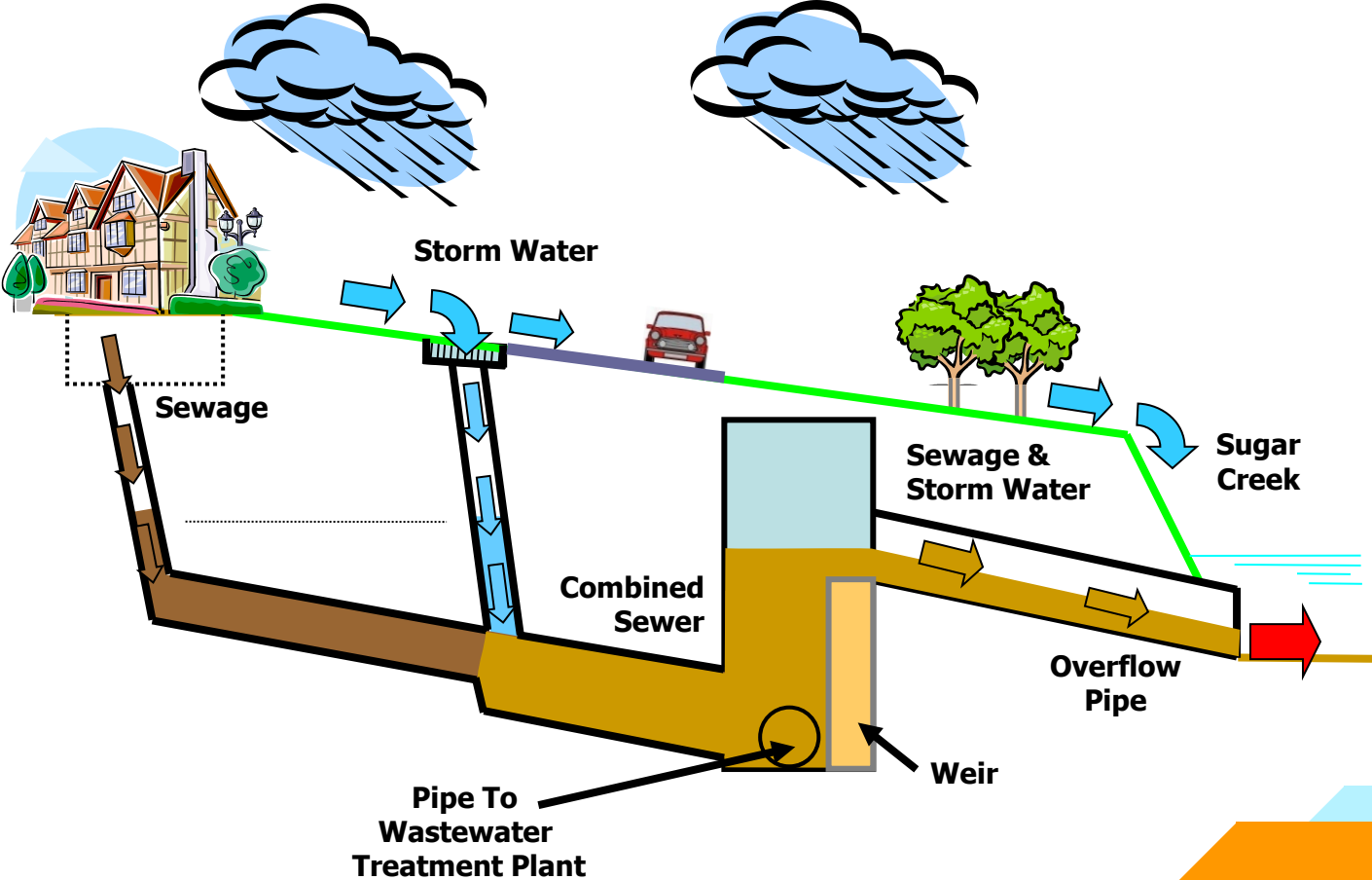
**KEVIN KOTHE, P.E., DIRECTOR OF OPERATIONS &
ENGINEERING SERVICES / CITY ENGINEER
CITY COUNCIL - OCTOBER 9, 2023**

What is a Combined Sewer Overflow (CSO)?

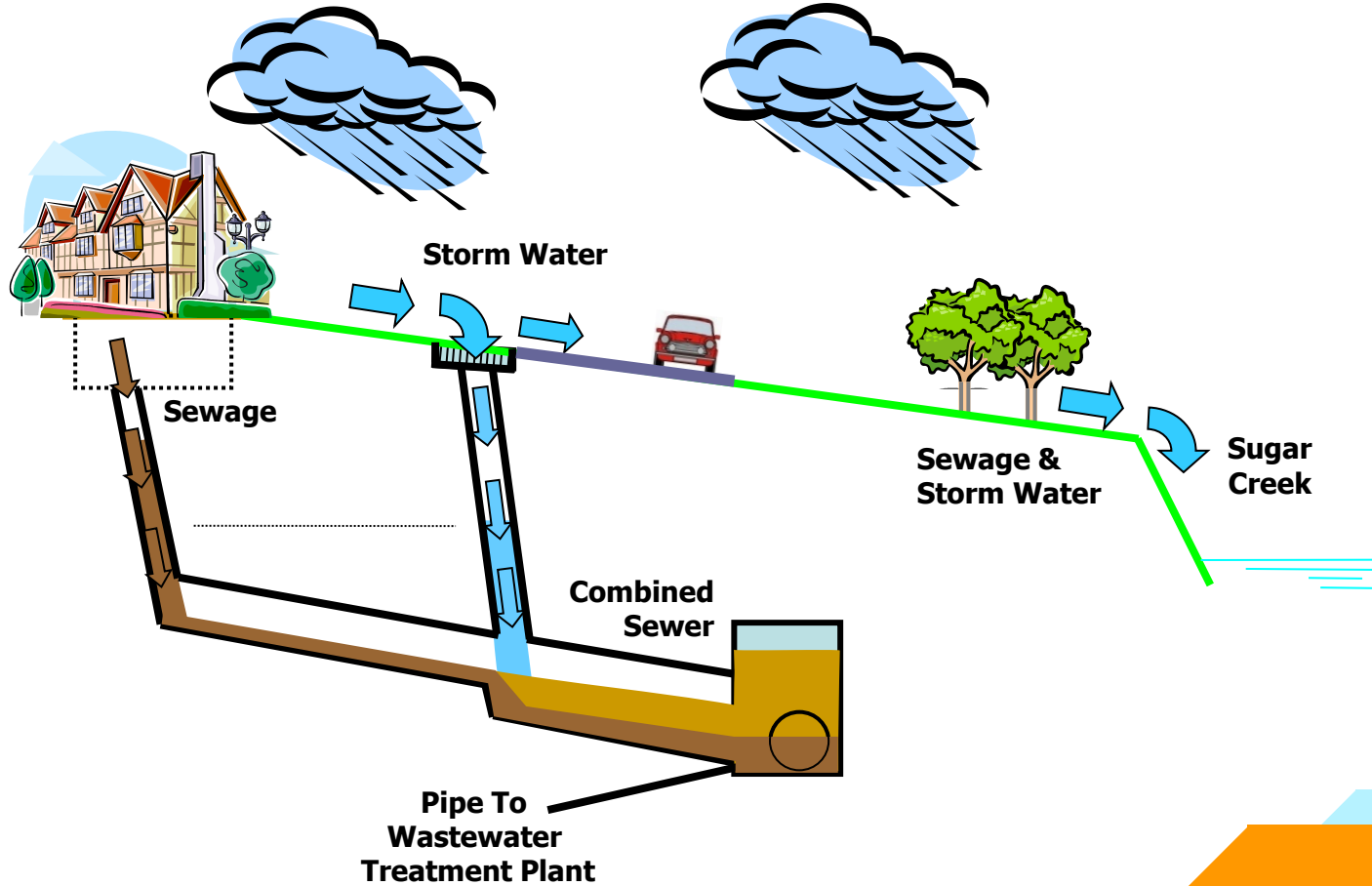
SEPARATED SEWER SYSTEM



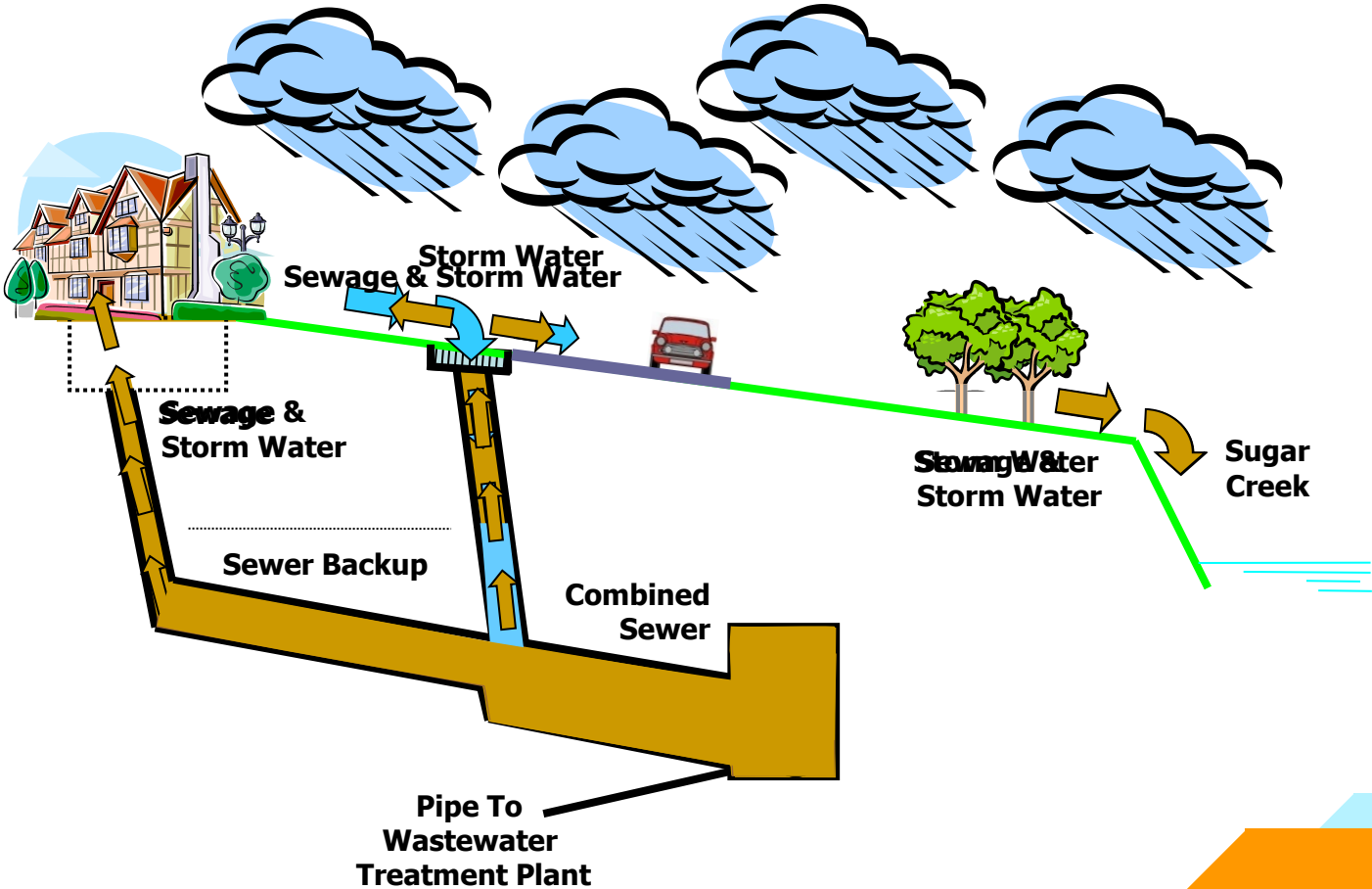
COMBINED SEWER OVERFLOW SYSTEM



COMBINED SEWER SYSTEM



COMBINED SEWER SYSTEM OVER CAPACITY





Phases 8 & 9 Elements

- Building new sanitary sewer to separate the storm and sanitary flows
- Installing new water main to replace the old mains, which are reaching the end of their useful life
- Intermittent resurfacing and sidewalk, curb, and gutter repairs where utility trenches are dug

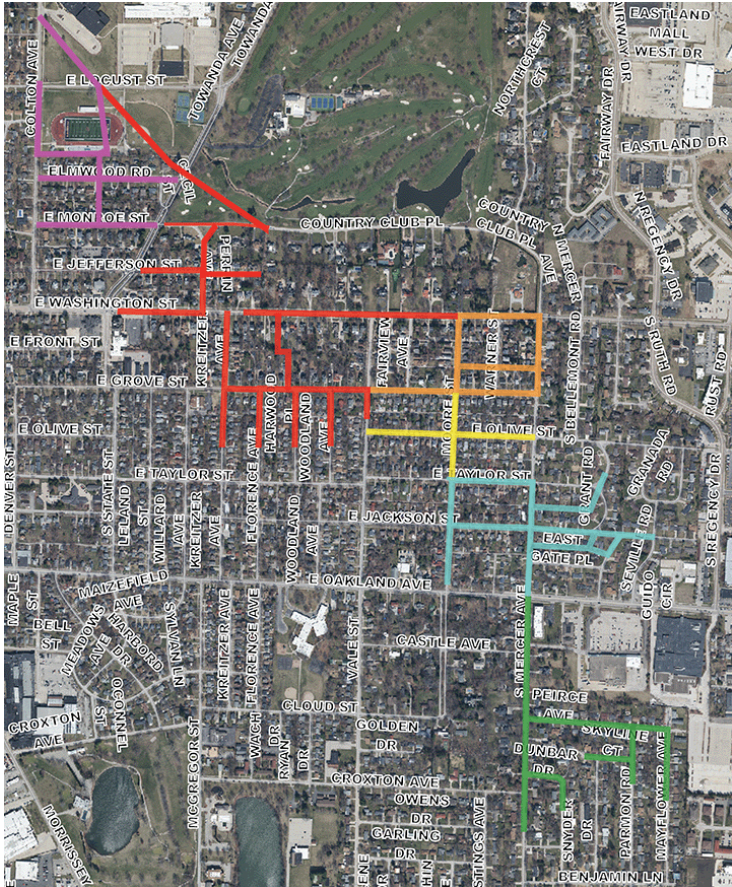




Phases 8 & 9 Benefits

- Eliminates/closes Locust CSO and Colton CSO
- Eliminates overflows into Sugar Creek during storm events
- Eliminates outdated combined sewers by separating sanitary and storm water flow
- Reduces the potential for sewer backups into residents' homes from storm events



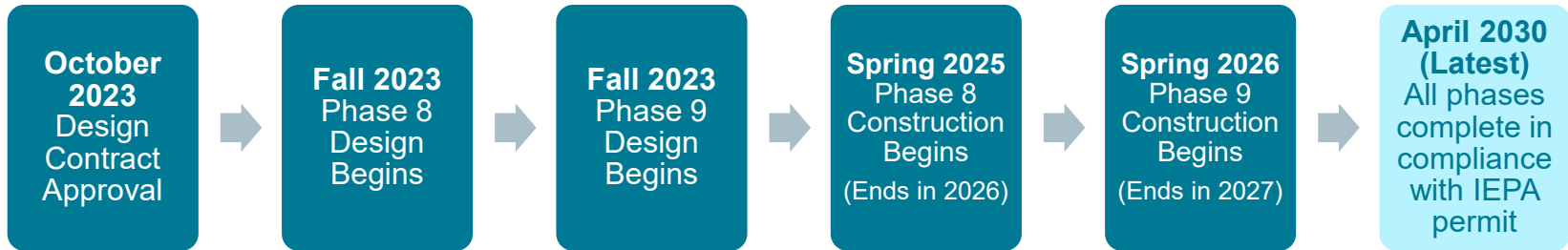


Overall Project Costs

Phase	Construction	Design	
1, 6, 7	\$9,200,000	\$630,000	
2	\$3,900,000	\$422,000	
3	\$2,300,000	\$630,000	
4, 5	\$10,800,000	\$1,286,000	
8 (est.)	\$8,750,000	\$2,000,000	
9 (est.)	\$6,750,000		
TOTAL	\$41,700,000	\$4,968,000	\$46,668,000



Phases 8 & 9 Proposed Schedule*

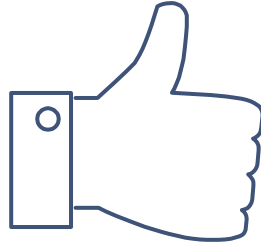


**Schedule depends on IEPA loan approvals*



Phases 8 & 9 Estimated Design & Construction Costs

Phases 8 & 9 Design	\$2.0 million
Phase 8 Construction	\$8.75 million
Phase 9 Construction	\$6.75 million
TOTAL	\$17.5 million



THANKS!

Any questions?

Kevin Kothe, P.E.

Director of Operations & Engineering Services /
City Engineer