

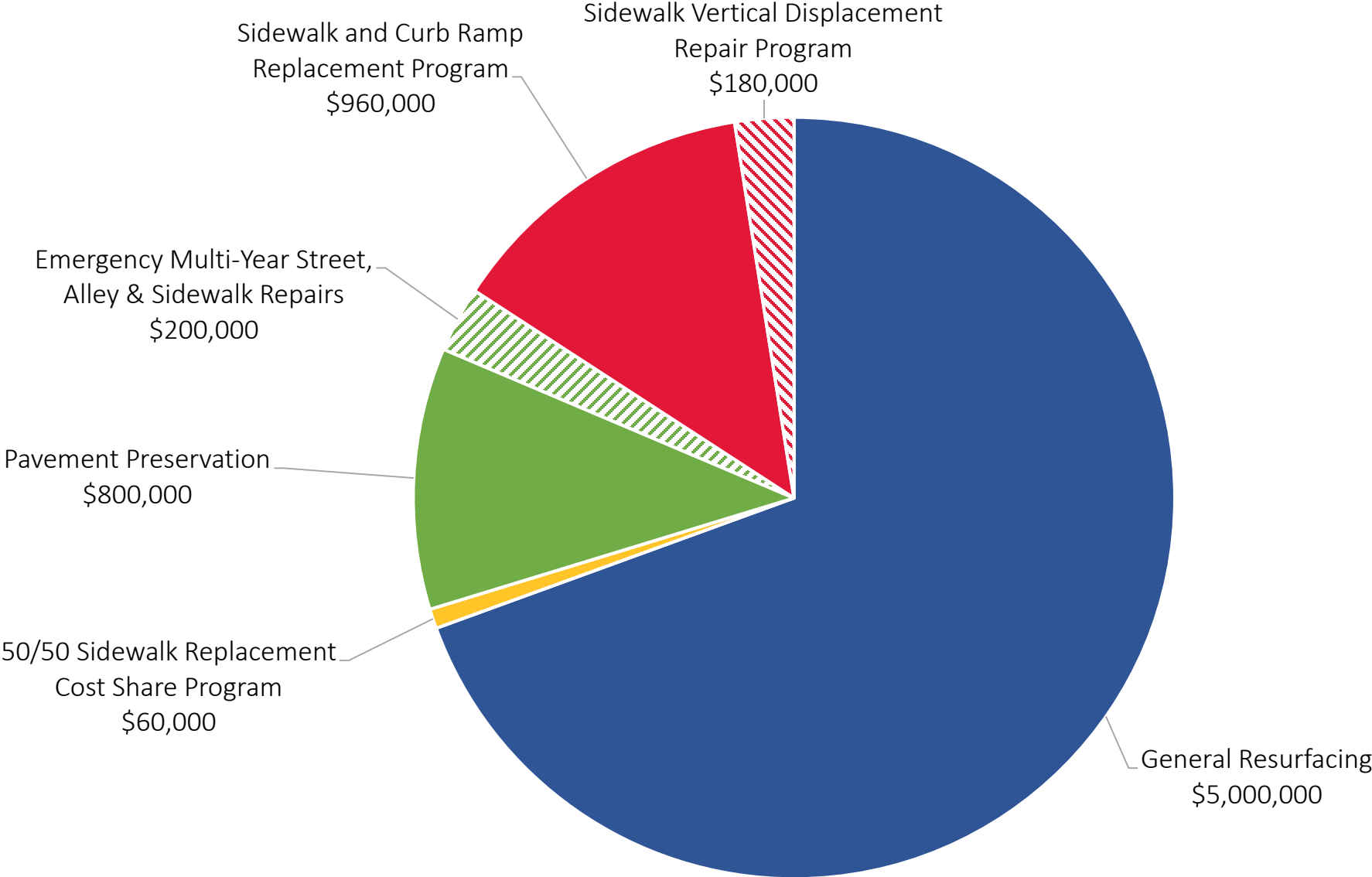
The background of the slide is a close-up, high-angle photograph of a dark asphalt road. A series of bright yellow rectangular markings are painted in a dashed line down the center of the road, receding into the distance. The texture of the asphalt is clearly visible.

# **FY 2022 & FY 2023 RESURFACING**

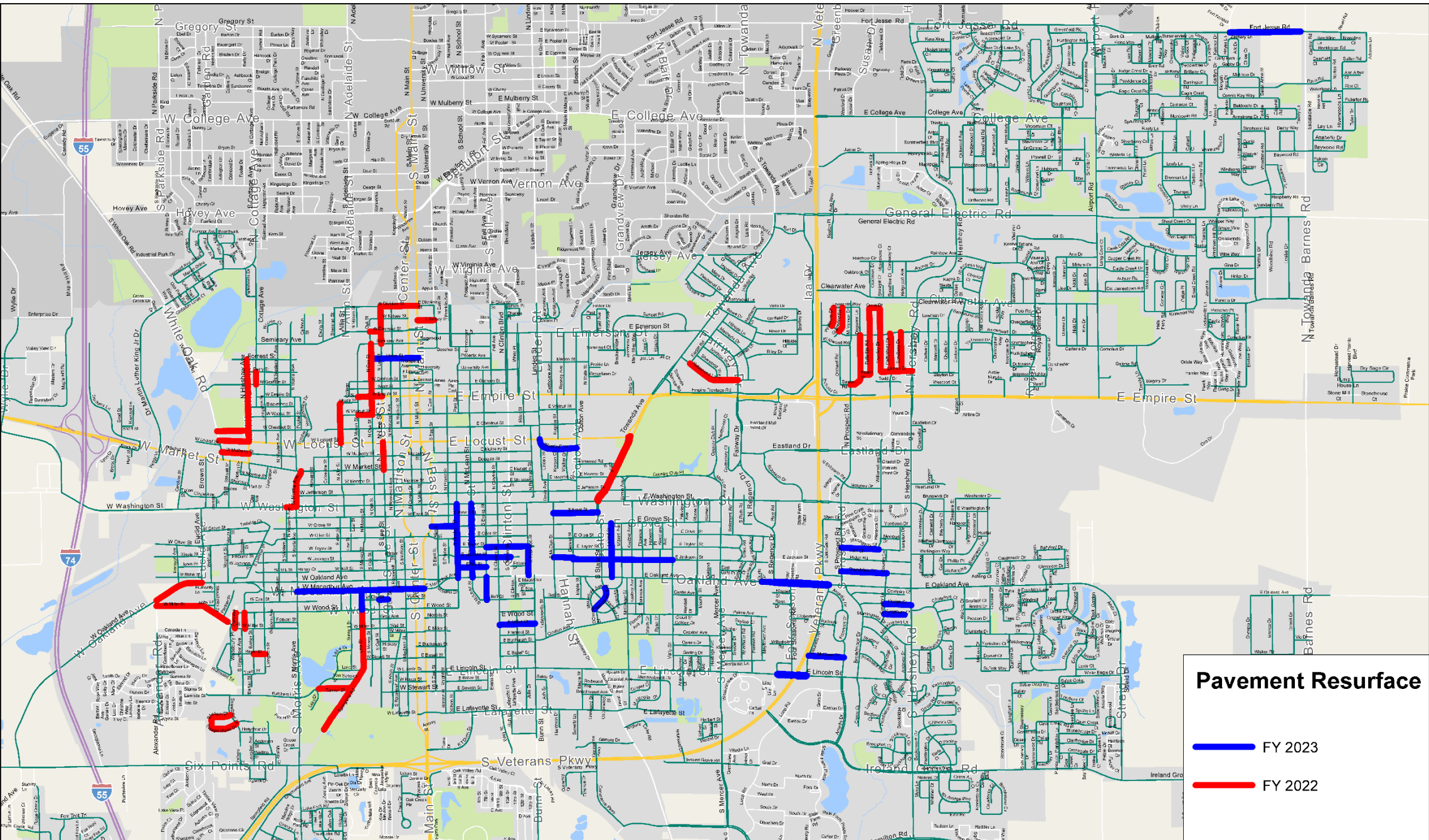
Kevin Kothe, P.E., Director of Public Works  
City Council Regular Meeting  
March 8, 2021



# FY 2022 Proposed Asphalt and Concrete Budget



# FY 2022 to FY 2023 Resurfacing Plan



## Pavement Resurface

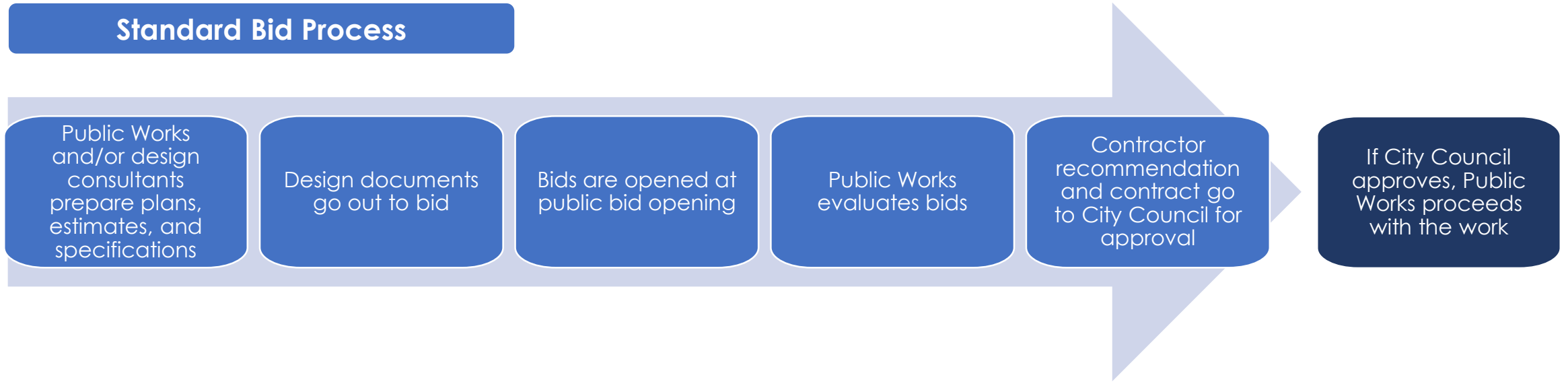
- FY 2023
- FY 2022

# Street Selection Process

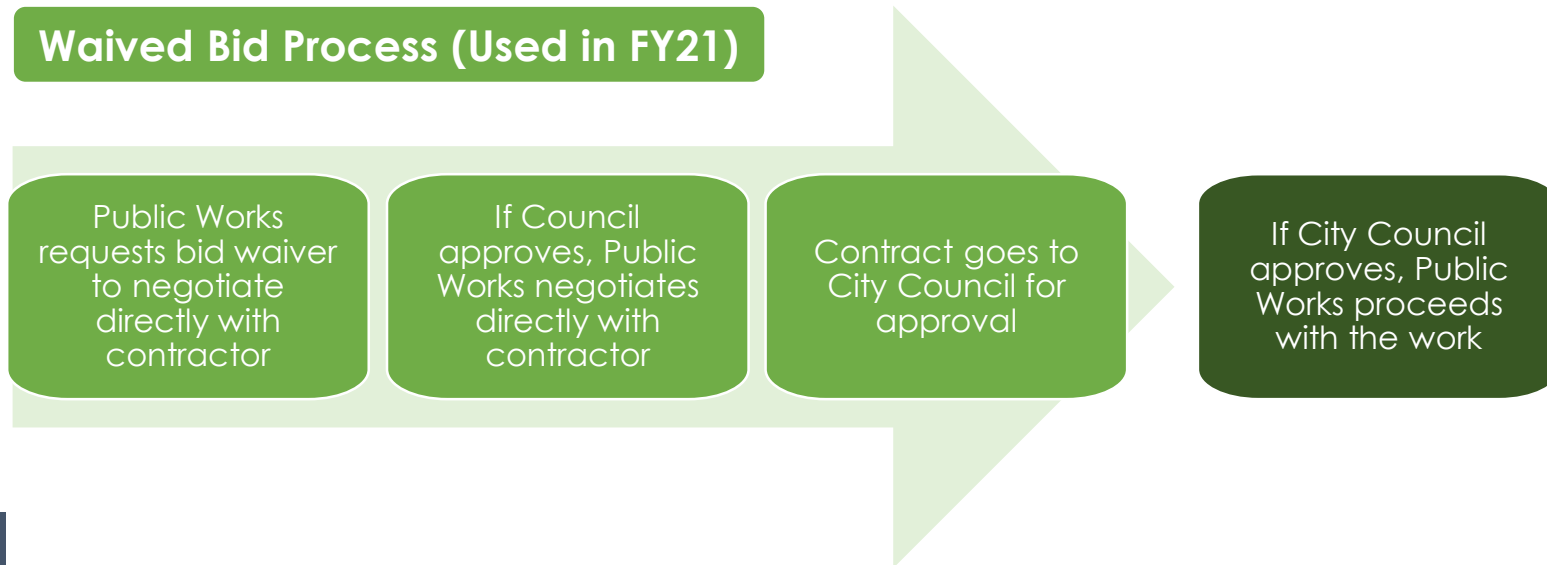
- ❖ 10-point PASER scale for road conditions based on PASER Asphalt Roads Manual and PASER Concrete Roads Manual
- ❖ Staff uses optimization software as the starting point for street selection
  - ❖ Uses network-based factors, which include functional class, roadside environment, service type, surface type, Average Daily Traffic (ADT), PASER System rating
  - ❖ Budget constraints
  - ❖ Block-by-block infrastructure / other project considerations
- ❖ Staff groups street segment recommendations output by the software that are close together but in different years to obtain better pricing

# Resurfacing Approval Processes

## Standard Bid Process



## Waived Bid Process (Used in FY21)







## Bloomington Streets

The City of Bloomington created this web page to focus primarily on upcoming street/sidewalk projects funded through Local Motor Fuel Tax (LMFT). This is in addition to signage, flyers, social media posts, and press releases the City will provide in order to keep the public informed about street maintenance projects in the City. The revenue generated by the now eight-cent LMFT, and one-quarter of one percent of the Home Rule Sales Tax, is kept separate in a special fund that can only be utilized for this work.

**Local Motor Fuel Tax and Home Rule Sales Tax collected in FY2020 to date total \$4,698,545. Expenditures total \$4,021,669.** Please note, there is a time lag between when LMFT is collected and when it is reported.

# Bloomington Streets Online



**THANK YOU!**

**QUESTIONS OR COMMENTS?**

