



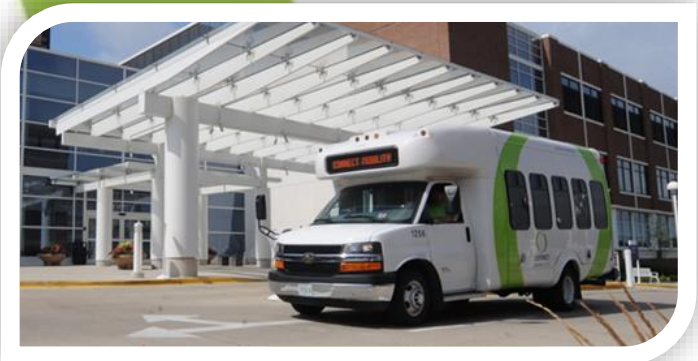
**connect**  
TRANSIT

# Connect Transit City of Bloomington Update



January 2021

# FY2021 Operating Budget



- **FY2021 Operating Budget**
  - \$14.5 Million Operating Budget
  
- **Budgeted Operating Revenue**
  - IDOT – \$9,339,000 (65%)
  - Federal - \$2,104,000 (14%)
  - Operating Revenue (Fares & Advertising) - \$1,675,000 (12%)
  
  - Local (City and Town) - \$1,382,000 (9%)
    - Bloomington – \$840,520
    - Normal – \$541,480

# COVID-19 Policies and Procedures



**RESTORING FULL SERVICE FOR CONNECT TRANSIT**

**JUNE 2020**

- GREEN & LIME EXPRESS RESTORED TO FULL-SERVICE LEVELS
- 6/26 - 10 PERSON PER BUS LIMIT LIFTED
- 6/26 - GATHERINGS OF 50 OR LESS ARE ALLOWED IN PUBLIC, PER "RESTORE ILLINOIS"
- 6/29 - CONNECT TRANSIT OFFICE WILL OPEN TO THE PUBLIC
- REAR BOARDING & FACE COVERING REQUIRED & ENFORCED, PER "RESTORE ILLINOIS"

**JULY 2020**

- DRIVER BARRIERS WILL BE INSTALLED ON ALL BUSES
- FRONT DOOR BOARDING WILL RESUME ONCE COMPLETE
- FACE COVERING REQUIRED & ENFORCED, PER "RESTORE ILLINOIS"

**AUGUST 2020**

- FARE COLLECTION SUSPENDED THROUGH 8/2
- "ONE FARE FOR ALL": MOBILE TICKETING & FARE CAPPING WILL LAUNCH WHEN FARE COLLECTION RESUMES
- \$1.25 FOR SINGLE RIDE AND \$40 FOR MONTHLY PASS FOR FIXED ROUTE & CONNECT MOBILITY
- 8/9 - SYSTEM WIDE FULL-SERVICE LEVELS RESTORED
- FACE COVERING REQUIRED & ENFORCED, PER "RESTORE ILLINOIS"

NOTES ARE SUBJECT TO CDC AND ILLINOIS "CONNECT"

- Regular Bus Cleaning and Disinfecting
- Rear-door boarding / Face covering required
- COVID-19 Testing Site Service
- Fares have been suspended since March 18, 2020.



- FY19 Ridership: 2,513,951
- FY20 Ridership (COVID): 1,682,887



# Grants Awarded in 2020



- **\$9.92 Million – Rebuild Illinois Capital Program via Department of Transportation**
  - Improve service in downtown Bloomington
  - Purchase four 35-foot electric buses
  - Bus Stop Improvements (90 Stops)
  
- **\$8 Million – Bus and Bus Facilities Grant via the Federal Transit Administration**
  - Designated to use on transfer center in Bloomington





# Grants Awarded in 2020

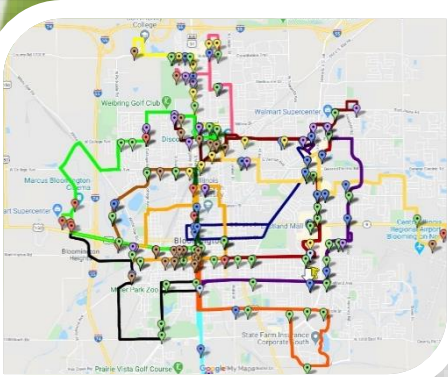


- **Solar Infrastructure Project is underway**
  - Solar array being installed ahead of bus delivery
  - Solar will offset facility energy consumption
  - Estimated delivery of electric buses – Sept/Oct
  - \$600,250 Awarded to Connect Transit



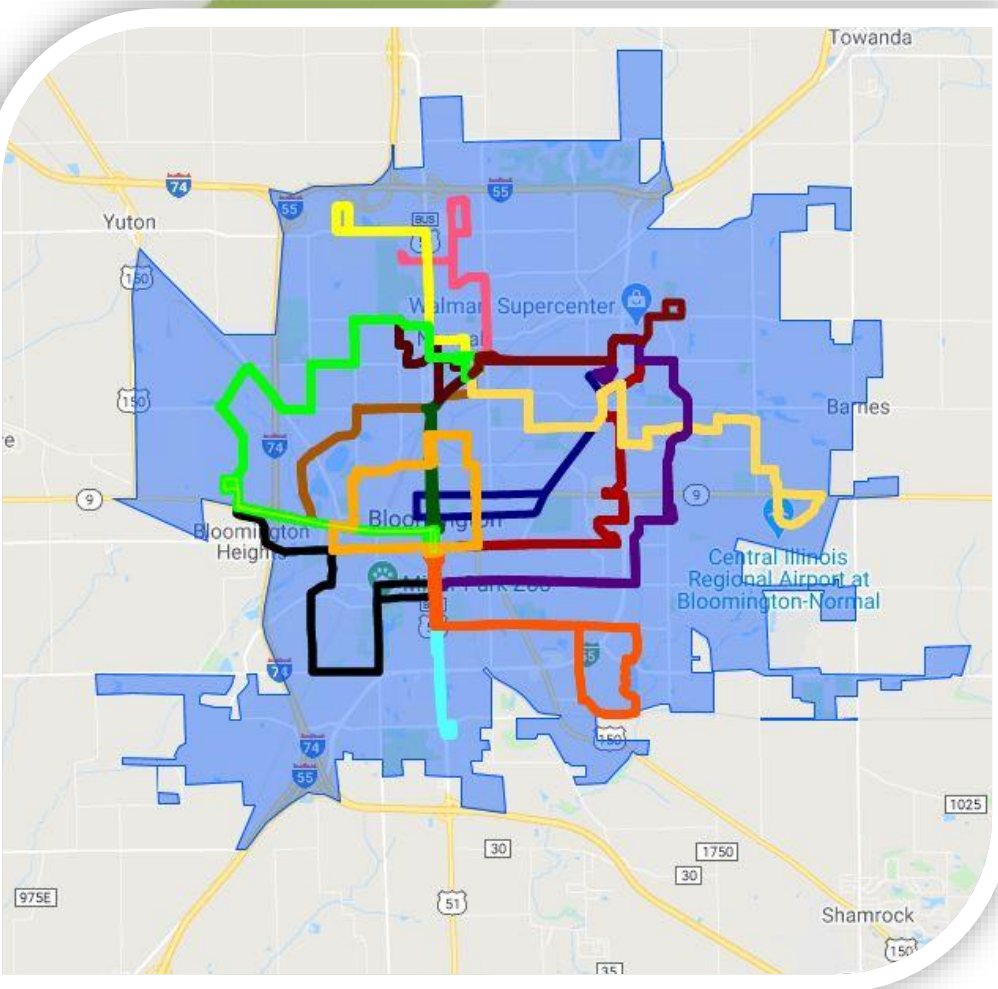
- **\$18 Million in Grants Awarded in 2020**

# Better Bus Stops Campaign



- **100% ADA Compliant by 2024**
- **Total Stops Completed in FY2020: 35**
- **Total Stops Scheduled for FY2021: 86**
- **Total Stops Scheduled for FY2022: 100**
- **Interactive Map Launched in 2020**
  - **Displays status of every stop in system**

# Connect to the Future Recommendations



- Work Group Implementation
- Recommendations
  - One Rate for All - \$1.25 takes effect when fare collection resumes
  - Expansion of Connect Mobility Service to Town and City limits
  - Better Bus Stop Campaign completion 2024
  - Future Action with Additional Funding

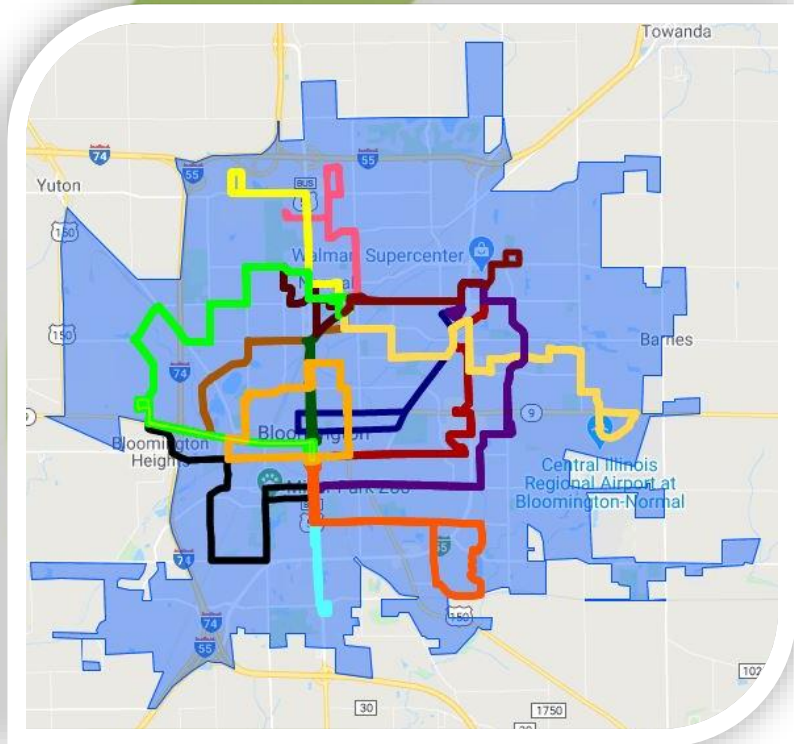
# General Manager Search



- **Executive Recruitment Firm Retained**
  - Harris Rand Lusk
- **Firm has interviewed Connect Transit Board of Trustees and senior staff**
- **GM Search Community Survey**
  - Live on CT website to gather community input
  - Position to be posted in late January
  - Hiring decision likely to be made in March 2021

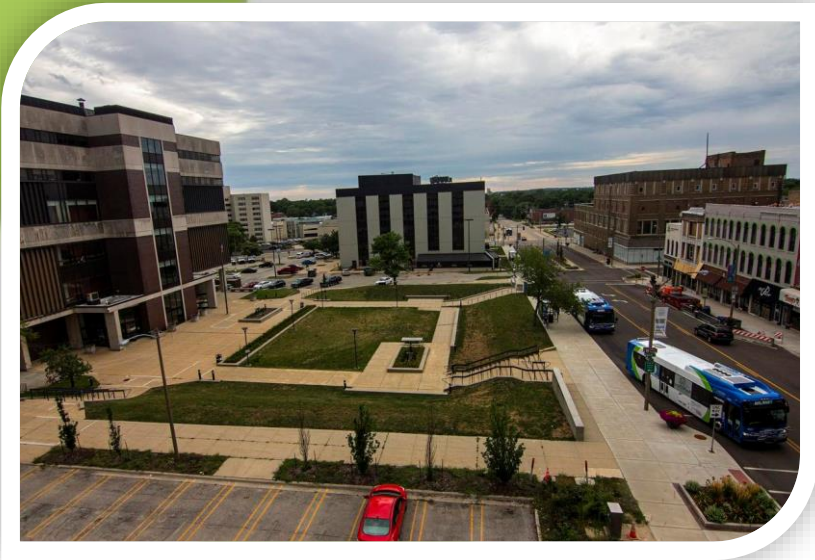
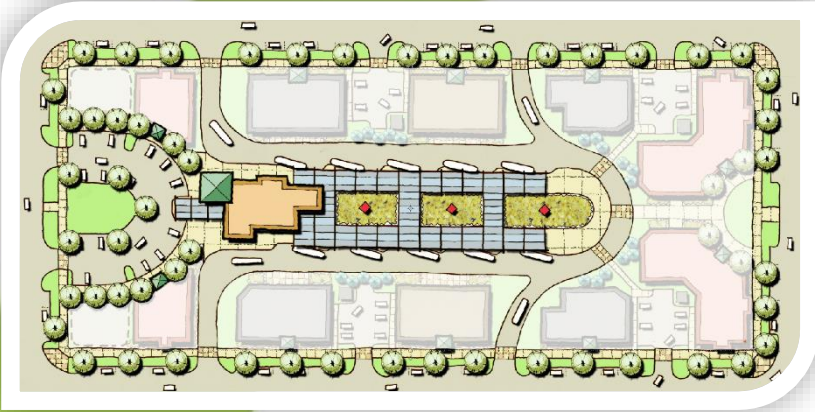


# Route Review Process – Coming in 2021



- Submissions from community members can be made via website
- Operations will investigate requests applying data driven analysis
- Results of analysis presented to Board Committee
- Final determination reported back to originator of request
- Implementation of new route review process expected in March '21

# Downtown Transportation Center Project



- Project Manager Retained
- Site analysis study nearing completion
- Final site candidates to be announced in late January or early February for community input
- Final site selection in March and proceed with site acquisition

A large, thick, light green curved graphic that starts from the top right and curves down and left, framing the central text.

# QUESTIONS?