

Charge Type Detail Report (Trip Date)

Period IS 201812 OR -201812; AND Company IS City of Bloomington

	<u>Count</u>	<u>Dollars</u>
City of Bloomington		
ALS Emergency		
BLFD ALS Emergency Base Rate	231.0	180,842.97
Totals For Type: ALS Emergency	231.0	\$ 180,842.97
ALS Emergency II		
BLFD ALS II Emergency Base Rat	5.0	4,390.60
Totals For Type: ALS Emergency II	5.0	\$ 4,390.60
BLS Emergency		
BLFD BLS Emergency Base Rate	411.0	268,128.18
Totals For Type: BLS Emergency	411.0	\$ 268,128.18
Mileage		
BLFD Mileage	1,875.9	29,376.59
Totals For Type: Mileage	1,875.9	\$ 29,376.59
Misc Fee		
Credit balance applied	50.0	0.50
Interest	3,379.0	33.79
Totals For Type: Misc Fee	3,429.0	\$ 34.29
Misc. Services		
BLFD ALS Intercept Fee	20.0	6,069.80
BLFD ALSII Intercept Fee	1.0	439.26
BLFD Standby College Sporting	2.0	570.00
BLFD Standby HS Sport Event	1.0	220.00
BLFD Standby Medic Event	1.0	500.00
BLFD Stby Addl College 15 min	10.0	605.00
BLFD Stby Medic Event 15 min	12.0	750.00
Totals For Type: Misc. Services	47.0	\$ 9,154.06
Misc. Supplies		
BLFD Oxygen	59.0	1,121.00
Totals For Type: Misc. Supplies	59.0	\$ 1,121.00

RescueNet™ Reporting

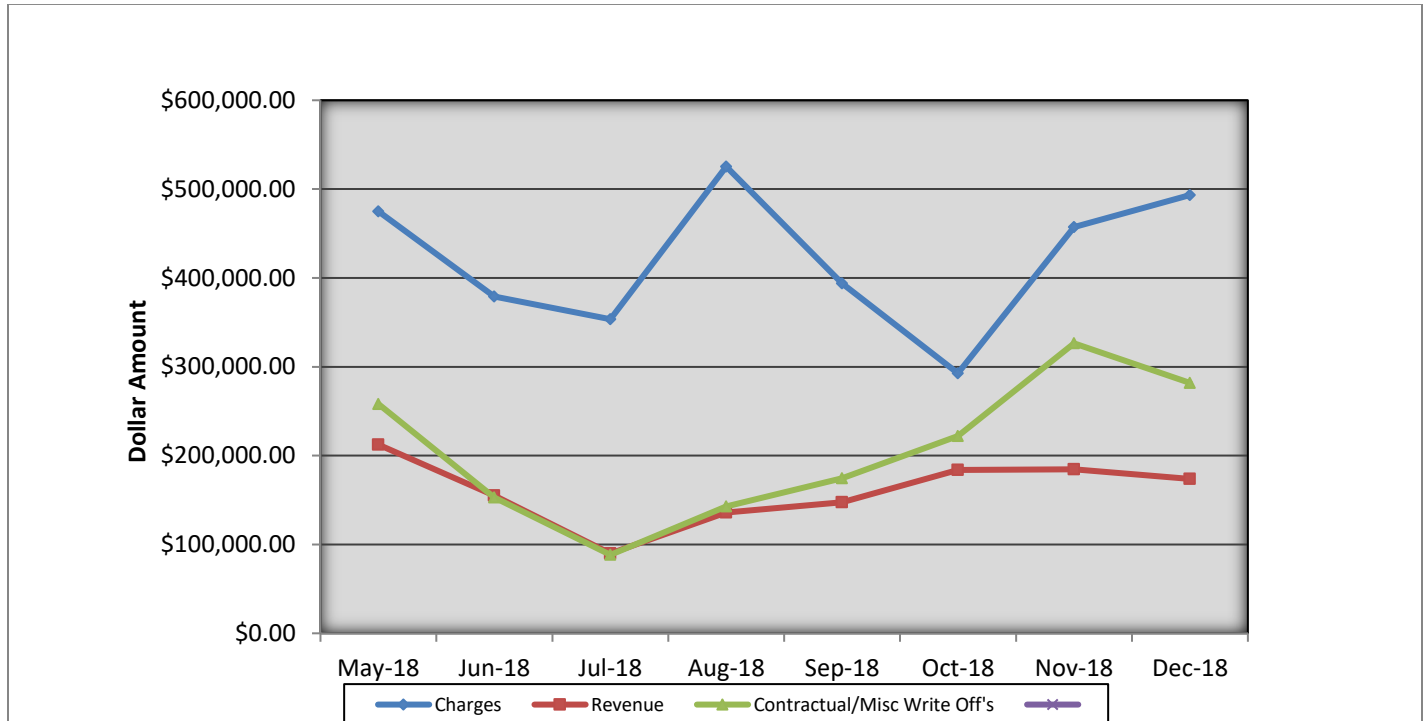
Charge Type Detail Report (Trip Date)

Period IS 201812 OR -201812; AND Company IS City of Bloomington

	<u>Count</u>	<u>Dollars</u>
City of Bloomington (cont.)		
Treatment No Transport		
BLFD Treatment no transport	1.0	195.71
Totals For Type: Treatment No Transport	1.0	\$ 195.71
Totals For Company: City of Bloomington	6058.9	\$493,243.40
Report Totals:	6,058.9	\$ 493,243.40

Bloomington Fire Dept EMS Billing

Fiscal Year 2018/2019



- Charges represent billings for emergency transports, intercepts, and ambulance standby's.
- Revenue represents the amount of revenue collected for emergency transports, intercepts, and ambulance stand by's.
- Contractual/Miscellaneous Write Off's- are the combination of contractual allowances and miscellaneous write off's. Contractuals are the amounts above what federal and state mandated carriers allow for EMS services. Miscellaneous write off's include Financial Hardships, Bankruptcies, Small Balances, Workman's Compensation, and Incarcerated Patients.
- Bad Debt-Write off's on the accounts forwarded to a third party collection agency for further collection processing \$33,737.73

Totals Breakdown

Charge total-\$493,243.40

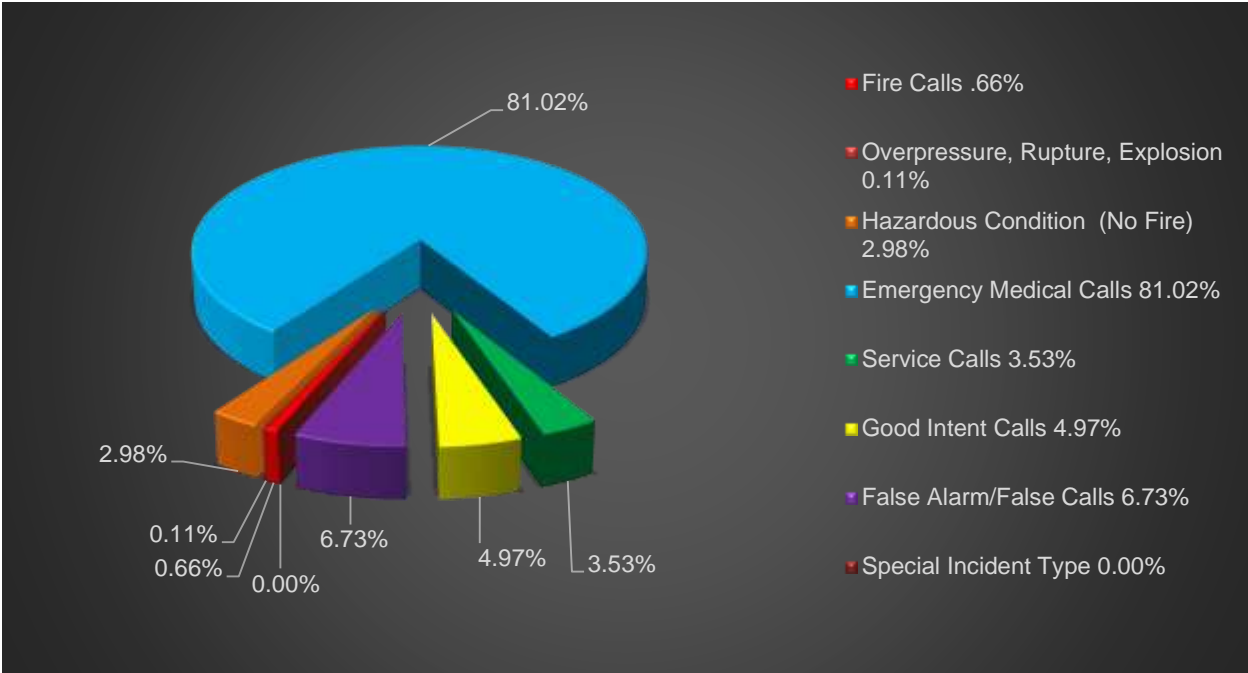
Revenue-\$173,934.09

Contractuals/Miscellaneous Write Offs-\$281,828.90

**Bloomington Comparison Report
December 2018**

	Current Month 12/2018	Previous Year 12/2017	Previous Month 11/2018
Charges			
BLS	411	347	401
ALS	231	248	200
ALS II	5	2	8
Charge Totals	\$493,243.40	\$441,479.75	\$457,197.34
Payments			
Payments	\$173,934.09	\$171,784.86	\$184,535.49
Bad Debt W/O	\$33,737.73	\$17,769.55	\$60,628.66
Cont/Misc W/O	\$281,828.90	\$178,866.89	\$326,389.03

December 2018 Operations Report





Bloomington Fire Dept.

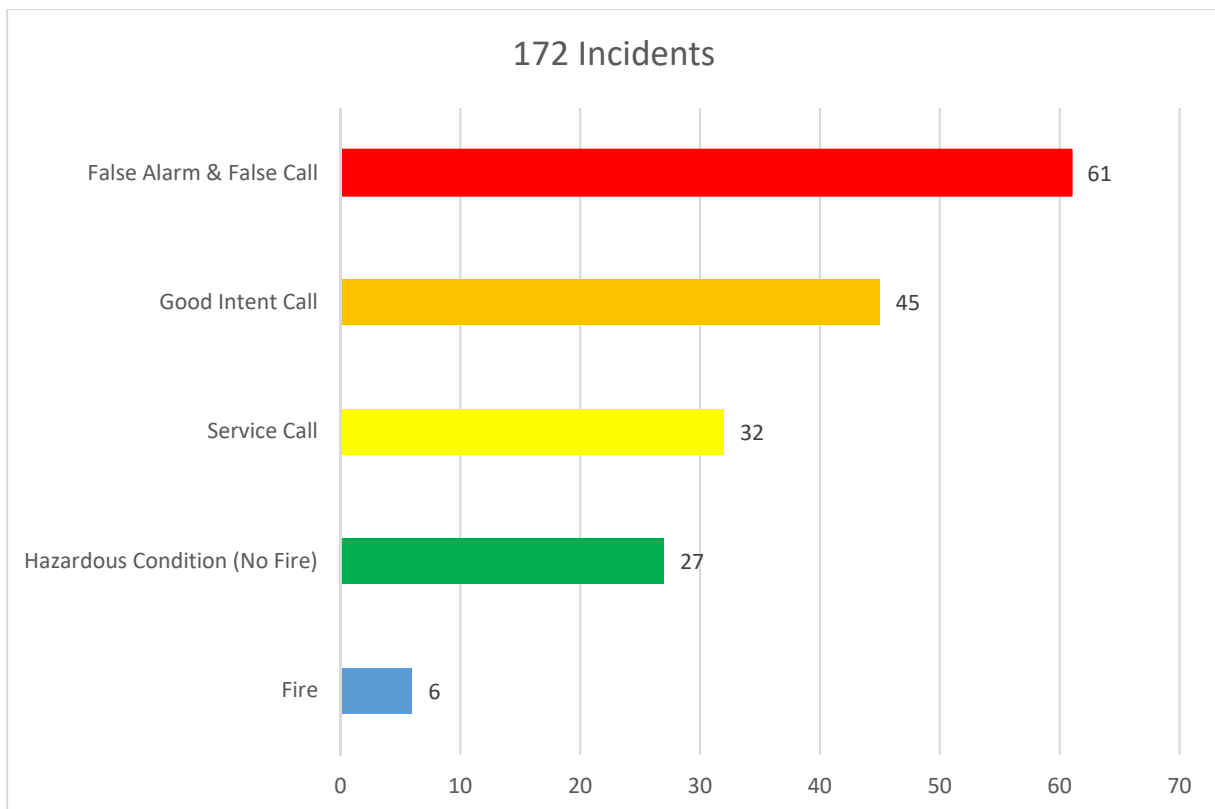
Monthly Fire Response Report

December 2018



Total Fire Response:	172
Total Structure Fires:	3
Total Estimated Dollar Loss (Property and Contents):	\$56,600

Top 5 Fire Responses





Bloomington Fire Dept.

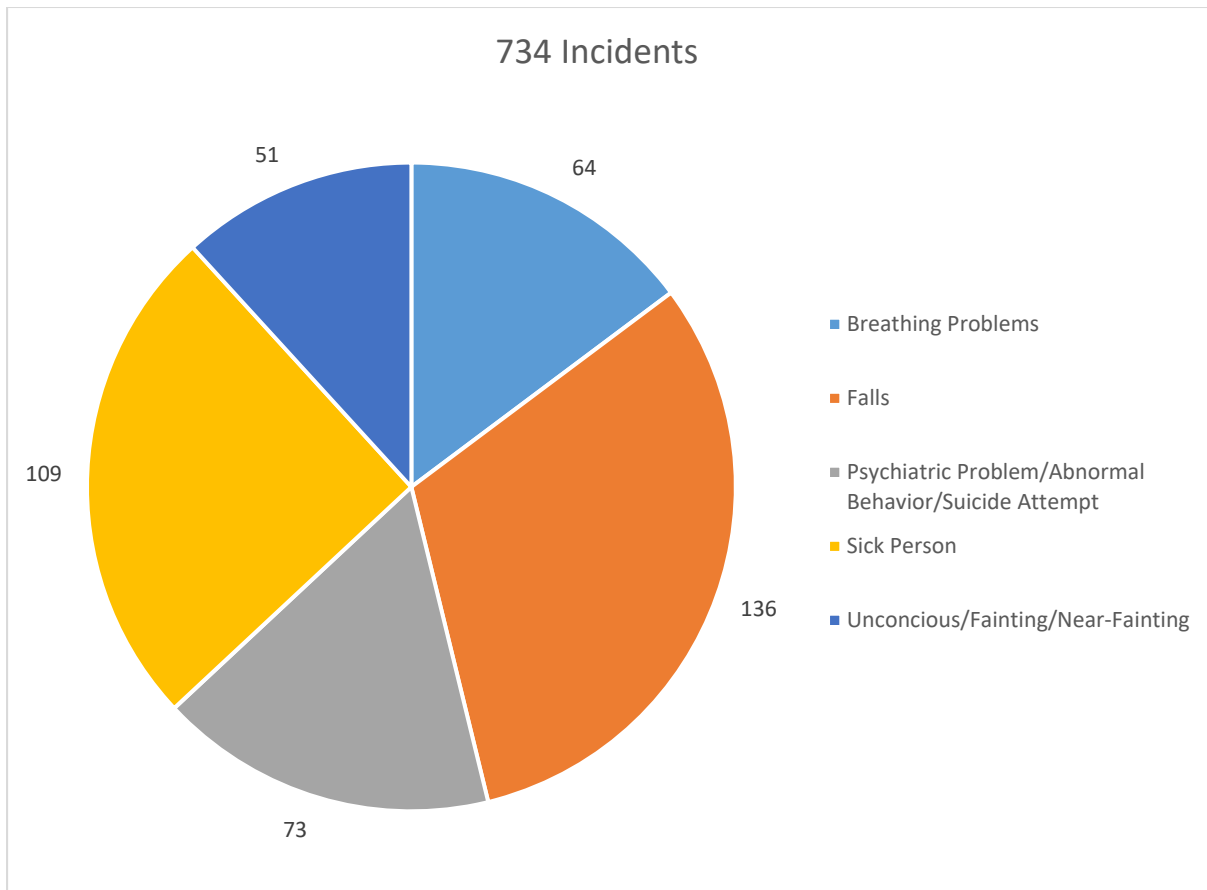
Monthly EMS Response Report

December 2018



Total EMS Response: 734
Total Patients: 775
Total Transported: 591

Top 5 EMS Responses

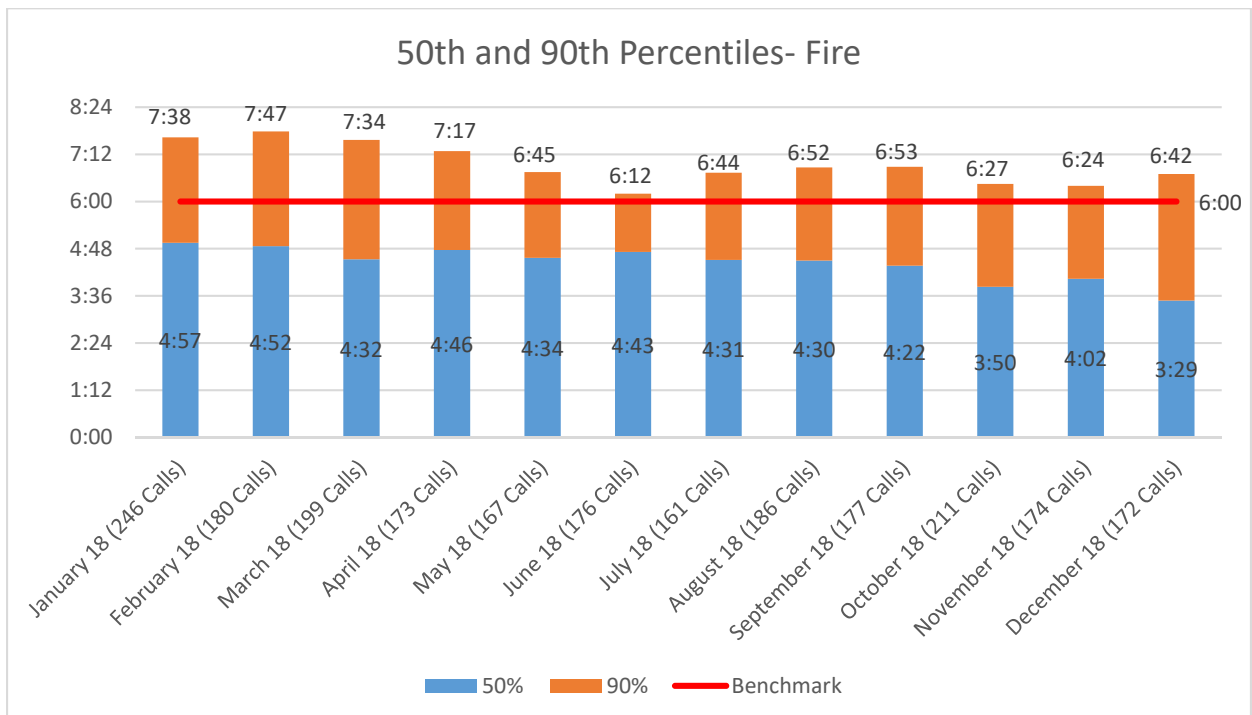
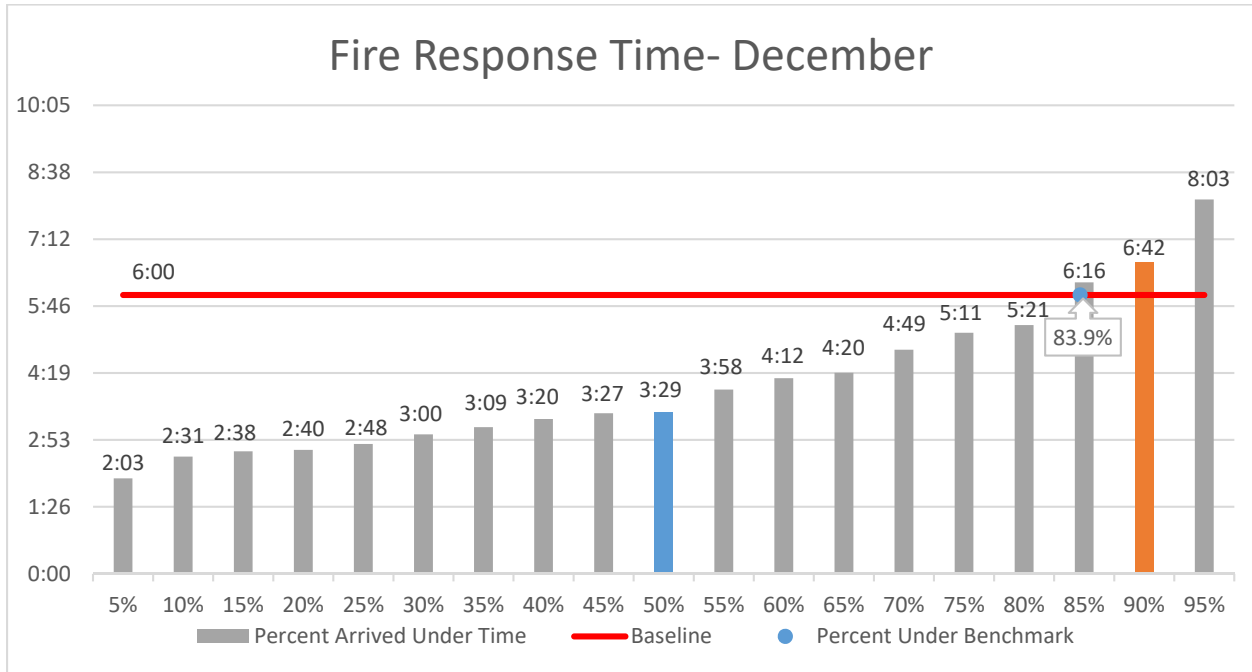




Bloomington Fire Dept.

Fire Response Times

December 2018





Bloomington Fire Dept.

EMS Response Times

December 2018

