

Charge Type Detail Report (Trip Date)

Period IS 201811 OR -201811; AND Company IS City of Bloomington

	<u>Count</u>	<u>Dollars</u>
City of Bloomington		
ALS Emergency		
BLFD ALS Emergency Base Rate	200.0	156,574.00
Totals For Type: ALS Emergency	200.0	\$ 156,574.00
ALS Emergency II		
BLFD ALS II Emergency Base Rat	8.0	7,024.96
Totals For Type: ALS Emergency II	8.0	\$ 7,024.96
BLS Emergency		
BLFD BLS Emergency Base Rate	402.0	262,256.76
Totals For Type: BLS Emergency	402.0	\$ 262,256.76
BLS Non Emergency		
BLFD BLS Non Emergency Base	-1.0	-652.38
Totals For Type: BLS Non Emergency	-1.0	-\$ 652.38
Mileage		
BLFD Mileage	1,790.9	28,045.13
Totals For Type: Mileage	1,790.9	\$ 28,045.13
Misc Fee		
Interest	7,916.0	79.16
Totals For Type: Misc Fee	7,916.0	\$ 79.16
Misc. Services		
BLFD ALS Intercept Fee	5.0	1,517.45
Totals For Type: Misc. Services	5.0	\$ 1,517.45
Misc. Supplies		
BLFD Oxygen	62.0	1,178.00
Totals For Type: Misc. Supplies	62.0	\$ 1,178.00
Treatment No Transport		

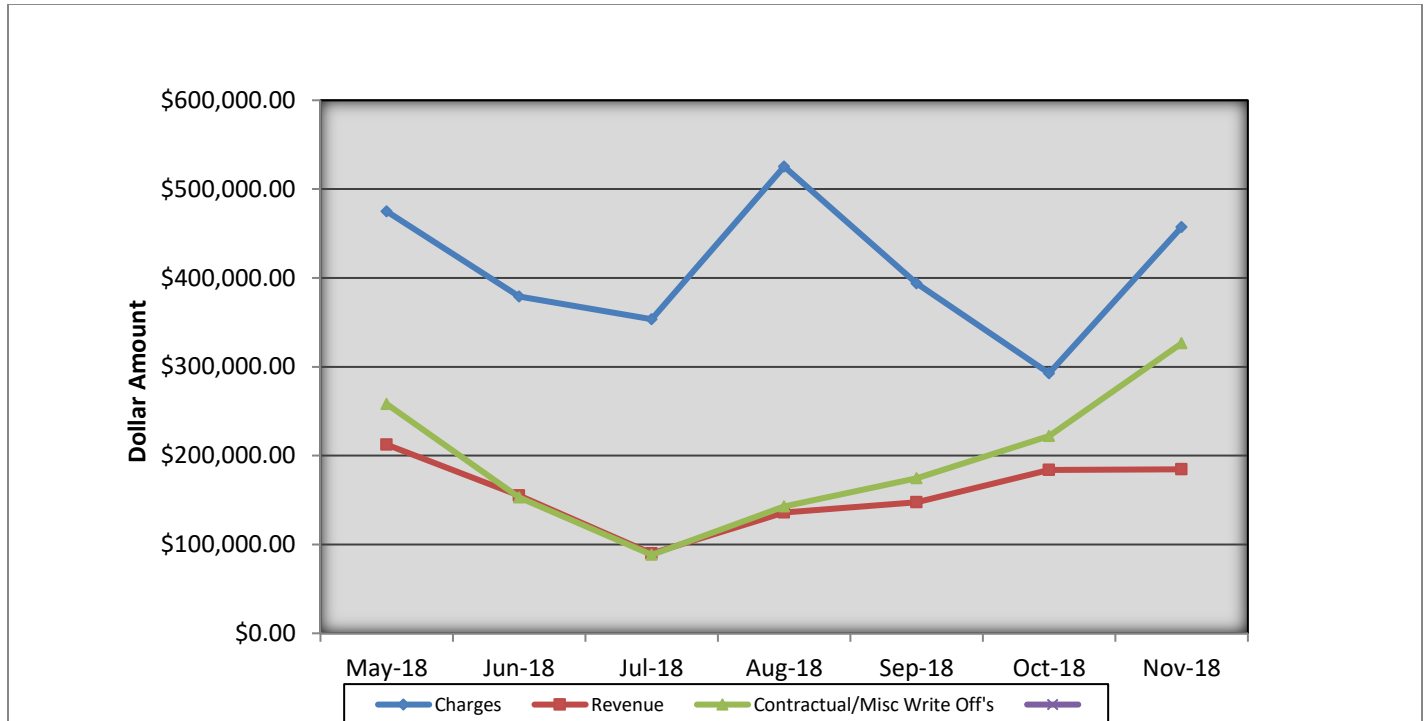
Charge Type Detail Report (Trip Date)

Period IS 201811 OR -201811; AND Company IS City of Bloomington

	<u>Count</u>	<u>Dollars</u>
City of Bloomington (cont.)		
BLFD Treatment no transport	6.0	1,174.26
Totals For Type: Treatment No Transport	6.0	\$ 1,174.26
Totals For Company: City of Bloomington	10388.9	\$457,197.34
Report Totals:	10,388.9	\$ 457,197.34

Bloomington Fire Dept EMS Billing

Fiscal Year 2018/2019



- Charges represent billings for emergency transports, intercepts, and ambulance standby's.
- Revenue represents the amount of revenue collected for emergency transports, intercepts, and ambulance stand by's.
- Contractual/Miscellaneous Write Off's- are the combination of contractual allowances and miscellaneous write off's. Contractuals are the amounts above what federal and state mandated carriers allow for EMS services. Miscellaneous write off's include Financial Hardships, Bankruptcies, Small Balances, Workman's Compensation, and Incarcerated Patients.
- Bad Debt-Write off's on the accounts forwarded to a third party collection agency for further collection processing \$60,562.79

Totals Breakdown

Charge total-\$457,197.34

Revenue-\$184,535.49

Contractuals/Miscellaneous Write Offs-\$326,454.90

**Bloomington Comparison Report
November 2018**

	Current Month 11/2018	Previous Year 11/2017	Previous Month 10/2018
Charges			
BLS	401	353	244
ALS	200	214	140
ALS II	8	4	3
Charge Totals	\$457,197.34	\$418,474.42	\$292,709.78
Payments			
Payments	\$184,535.49	\$209,595.15	\$183,899.70
Bad Debt W/O	\$60,562.79	\$51,933.61	\$73,583.92
Cont/Misc W/O	\$326,454.90	\$210,296.86	\$220,070.02



Bloomington Fire Dept.

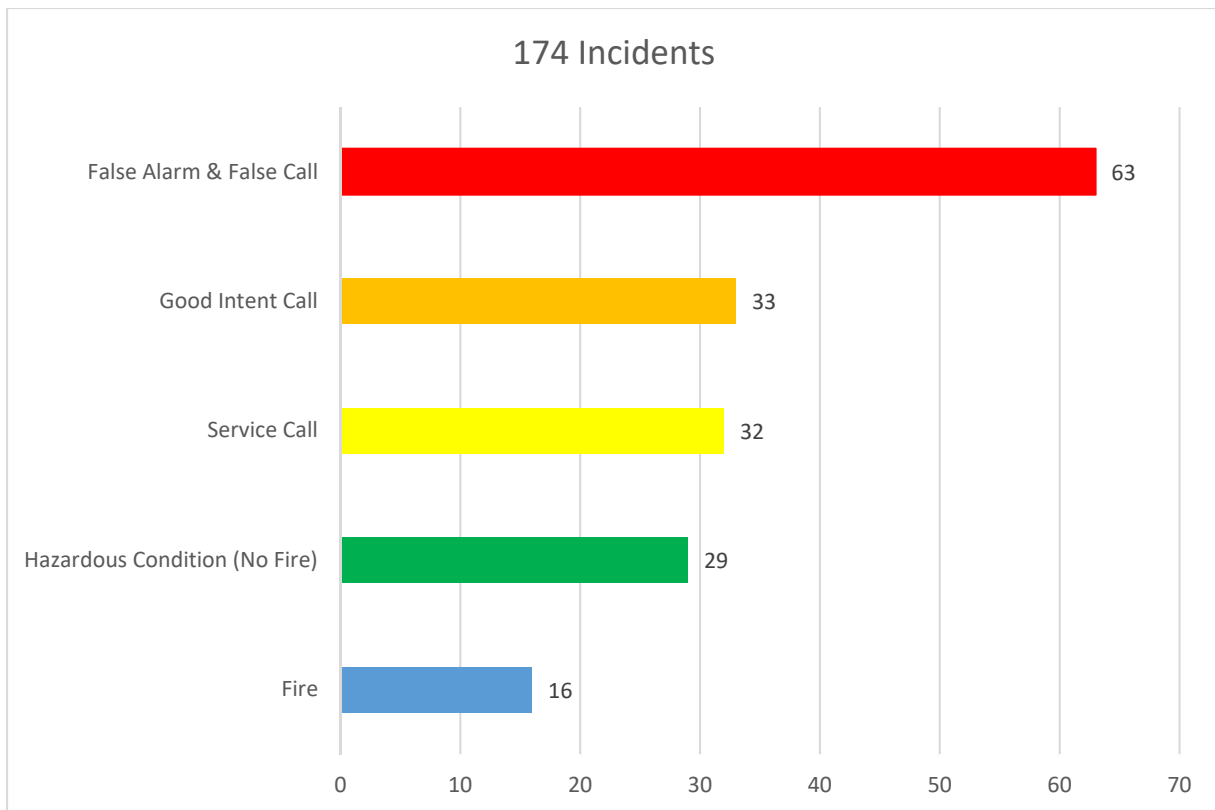
Monthly Fire Response Report

November 2018



Total Fire Response:	174
Total Structure Fires:	9
Total Estimated Dollar Loss (Property and Contents):	\$45,775

Top 5 Fire Responses

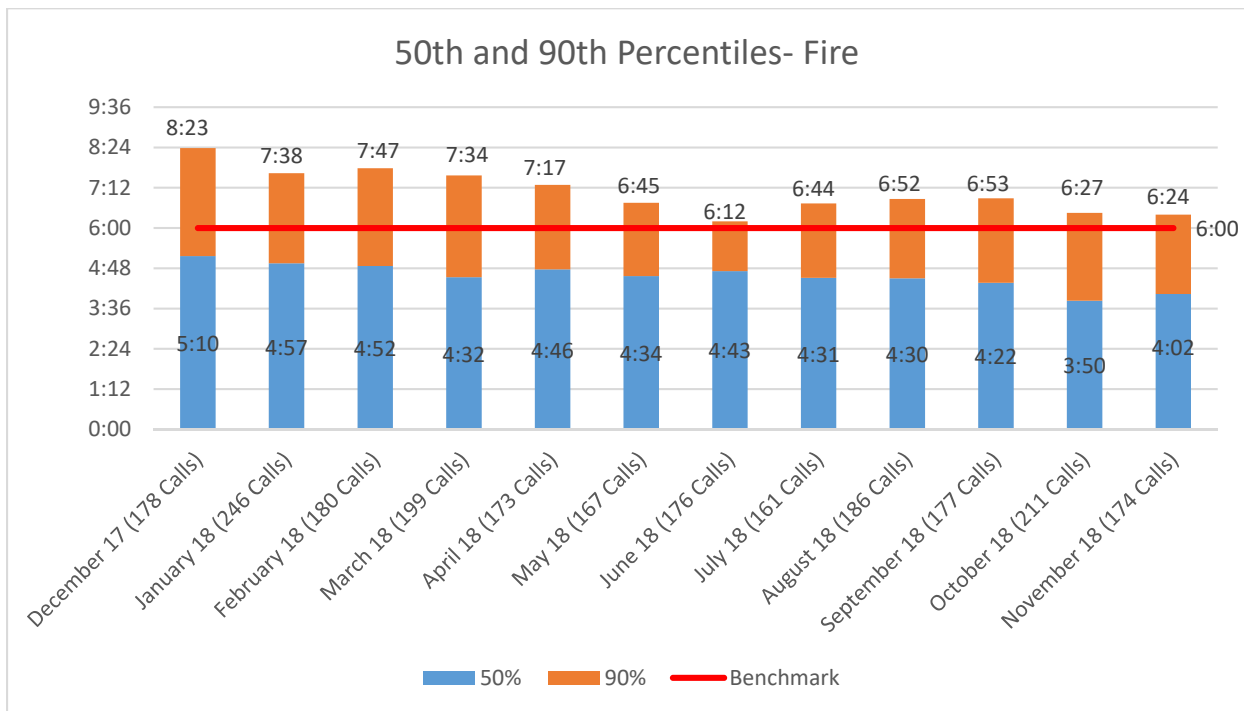
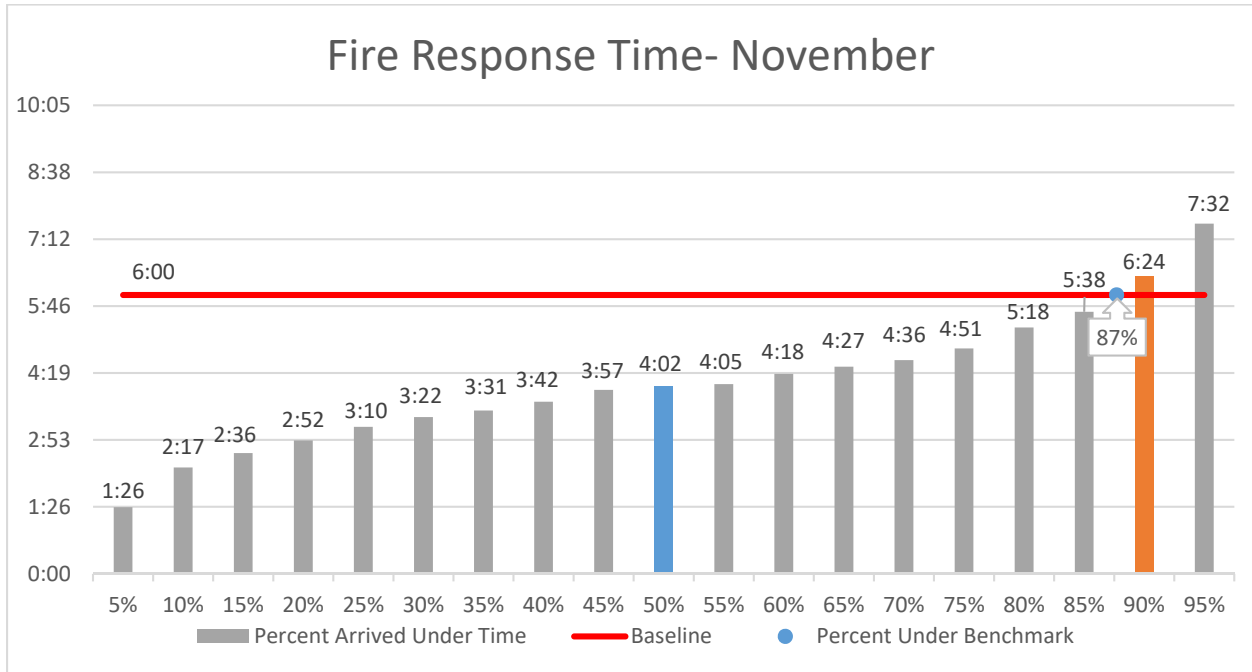




Bloomington Fire Dept.

Fire Response Times

November 2018





Bloomington Fire Dept.

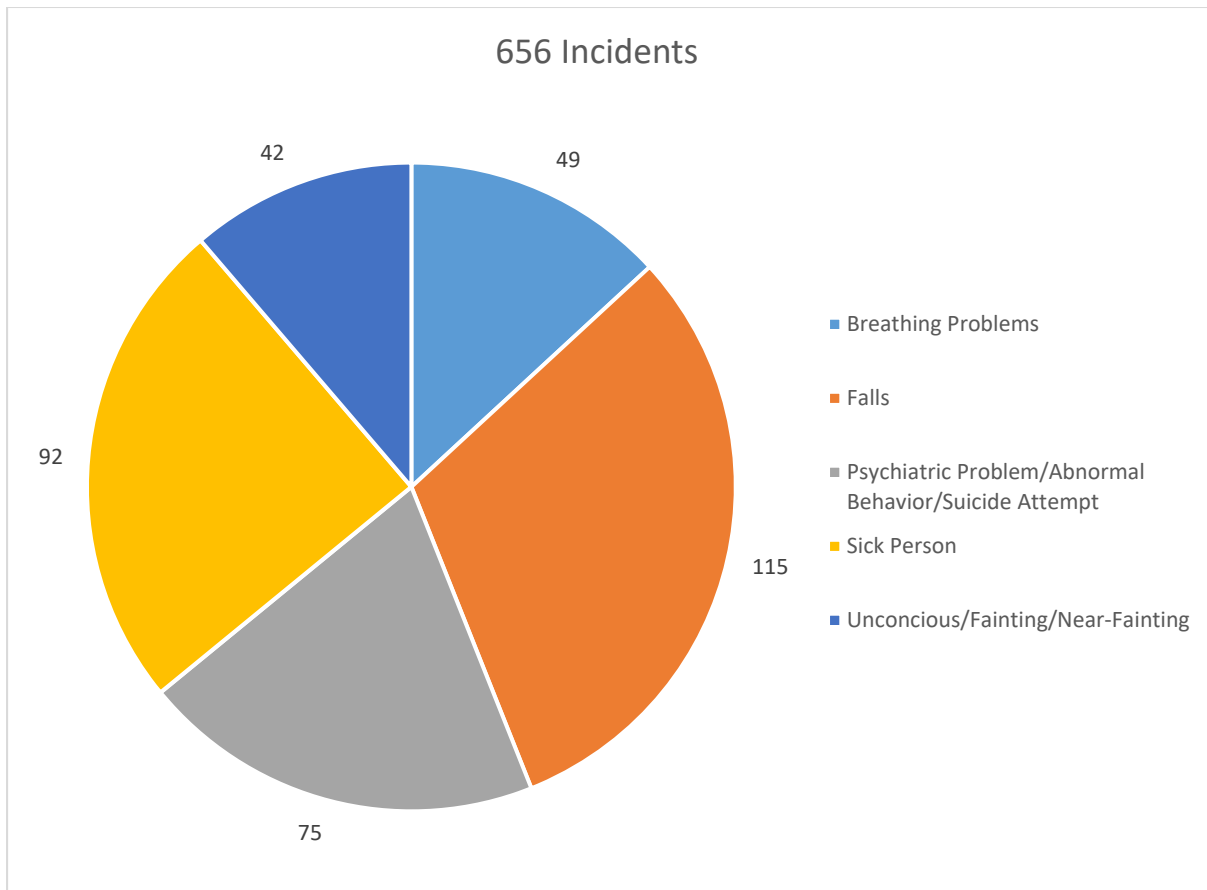
Monthly EMS Response Report

November 2018



Total EMS Response: 656
Total Patients: 644
Total Transported: 522

Top 5 EMS Responses

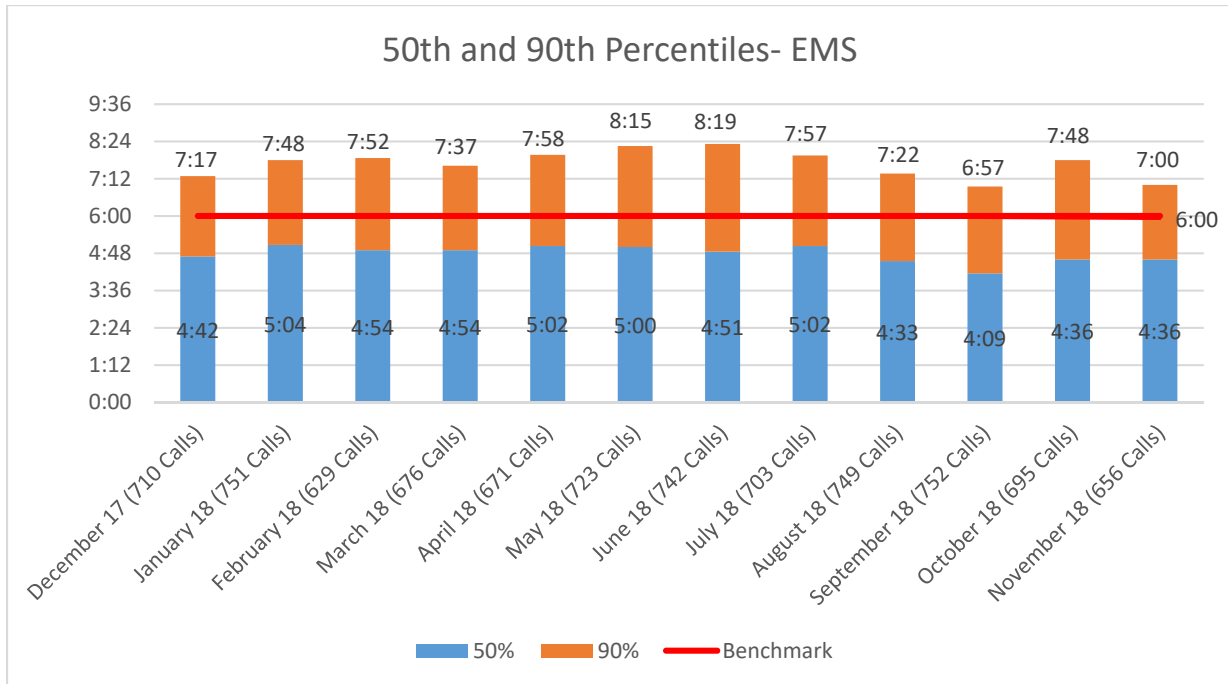
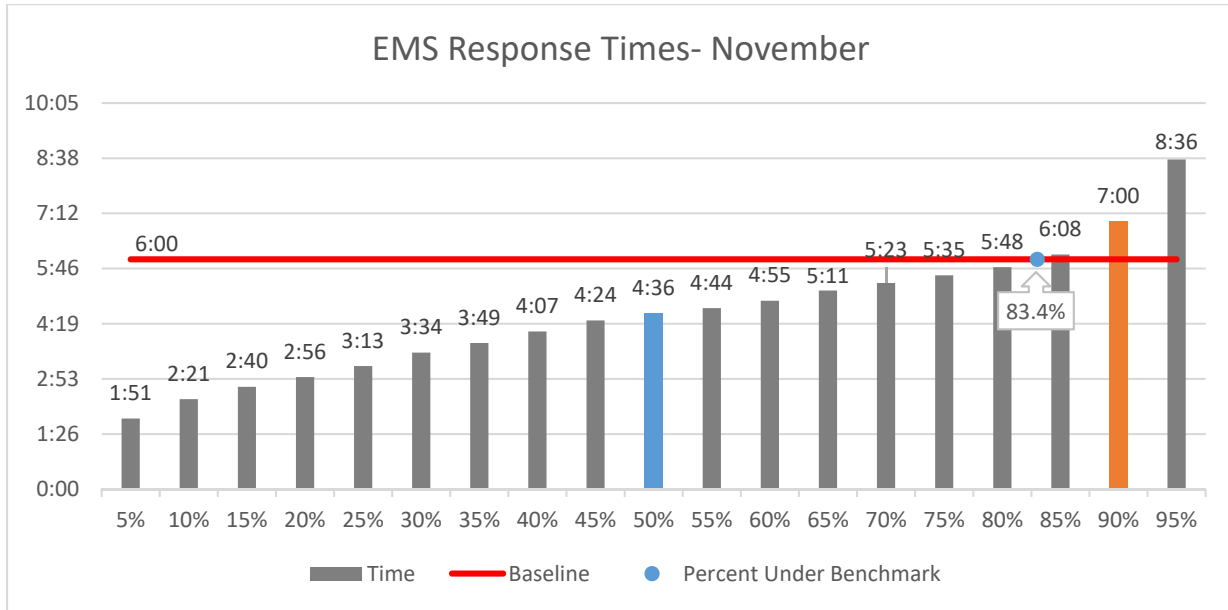




Bloomington Fire Dept.

EMS Response Times

November 2018



November 2018 Operations Report

