

Charge Type Detail Report (Trip Date)

Period IS 201810 OR -201810; AND Company IS City of Bloomington

	<u>Count</u>	<u>Dollars</u>
City of Bloomington		
ALS Emergency		
BLFD ALS Emergency Base Rate	140.0	109,601.80
Totals For Type: ALS Emergency	140.0	\$ 109,601.80
ALS Emergency II		
BLFD ALS II Emergency Base Rat	3.0	2,634.36
Totals For Type: ALS Emergency II	3.0	\$ 2,634.36
BLS Emergency		
BLFD BLS Emergency Base Rate	244.0	159,180.72
Totals For Type: BLS Emergency	244.0	\$ 159,180.72
Mileage		
BLFD Mileage	1,163.8	18,225.11
Totals For Type: Mileage	1,163.8	\$ 18,225.11
Misc Fee		
Credit balance applied	116.0	1.16
Interest	8,837.0	88.37
Totals For Type: Misc Fee	8,953.0	\$ 89.53
Misc. Services		
BLFD ALSII Intercept Fee	1.0	439.26
BLFD Standby College Sporting	1.0	220.00
BLFD Standby HS Sport Event	7.0	1,540.00
Totals For Type: Misc. Services	9.0	\$ 2,199.26
Misc. Supplies		
BLFD Oxygen	41.0	779.00
Totals For Type: Misc. Supplies	41.0	\$ 779.00
Totals For Company: City of Bloomington	10553.8	\$292,709.78

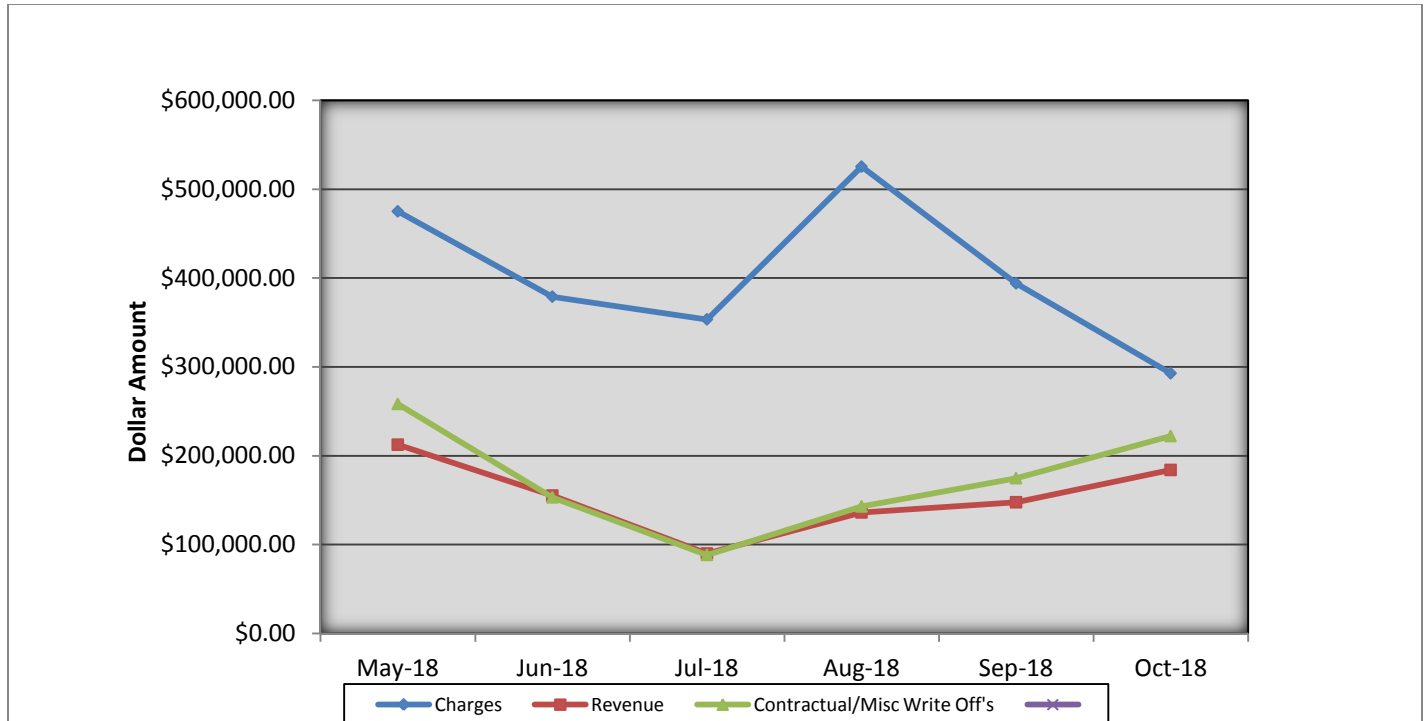
Charge Type Detail Report (Trip Date)

Period IS 201810 OR -201810; AND Company IS City of Bloomington

	<u>Count</u>	<u>Dollars</u>
Report Totals:	10,553.8	\$ 292,709.78

Bloomington Fire Dept EMS Billing

Fiscal Year 2018/2019



- Charges represent billings for emergency transports, intercepts, and ambulance standby's.
- Revenue represents the amount of revenue collected for emergency transports, intercepts, and ambulance stand by's.
- Contractual/Miscellaneous Write Off's- are the combination of contractual allowances and miscellaneous write off's. Contractuals are the amounts above what federal and state mandated carriers allow for EMS services. Miscellaneous write off's include Financial Hardships, Bankruptcies, Small Balances, Workman's Compensation, and Incarcerated Patients.
- Bad Debt-Write off's on the accounts forwarded to a third party collection agency for further collection processing \$73,583.92

Totals Breakdown

Charge total-\$292,709.78

Revenue-\$183,899.70

Contractuals/Miscellaneous Write Offs-\$222,070.02



Bloomington Fire Dept.

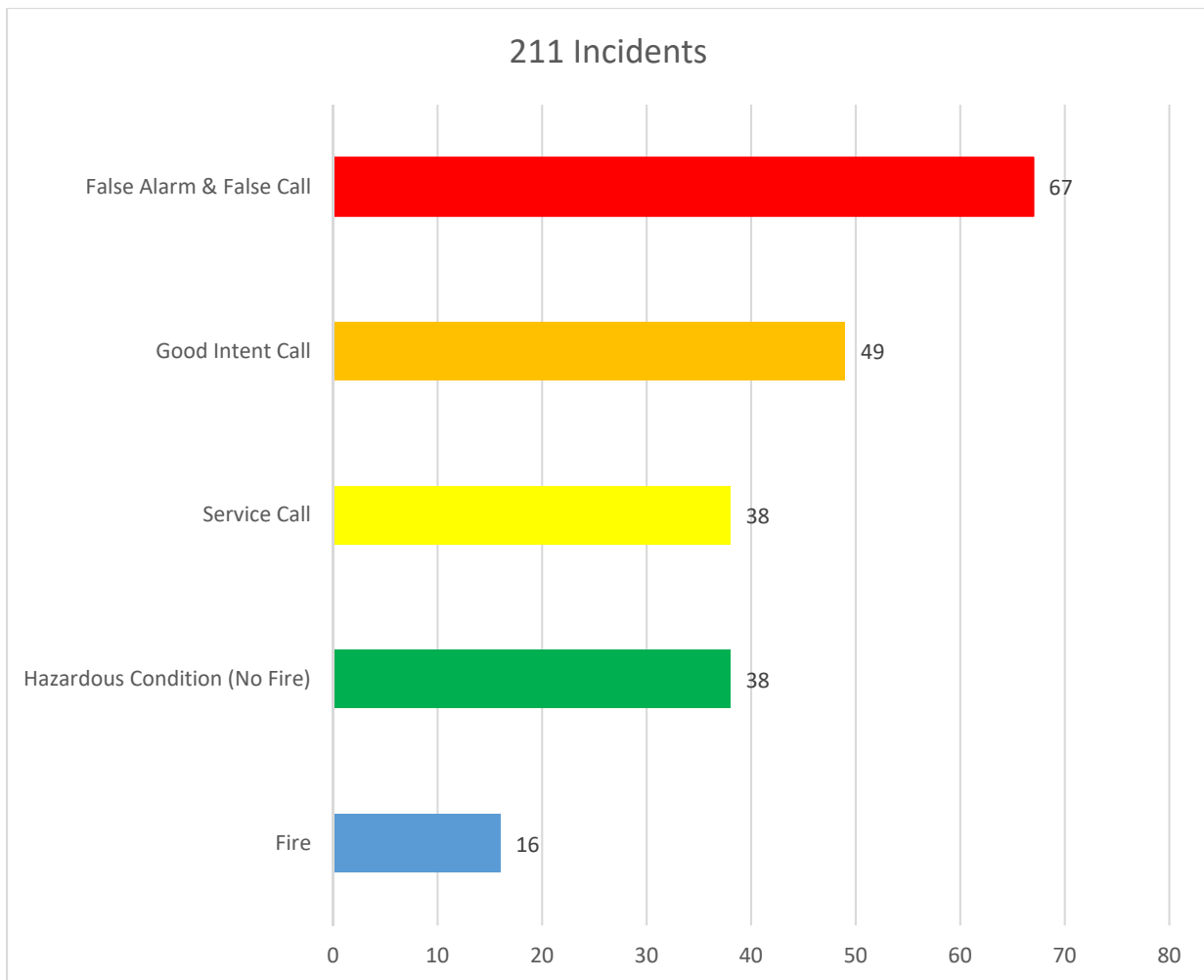
Monthly Fire Response Report

October 2018



Total Fire Response:	211
Total Structure Fires:	13
Total Estimated Dollar Loss (Property and Contents):	\$308,575

Top 5 Fire Responses

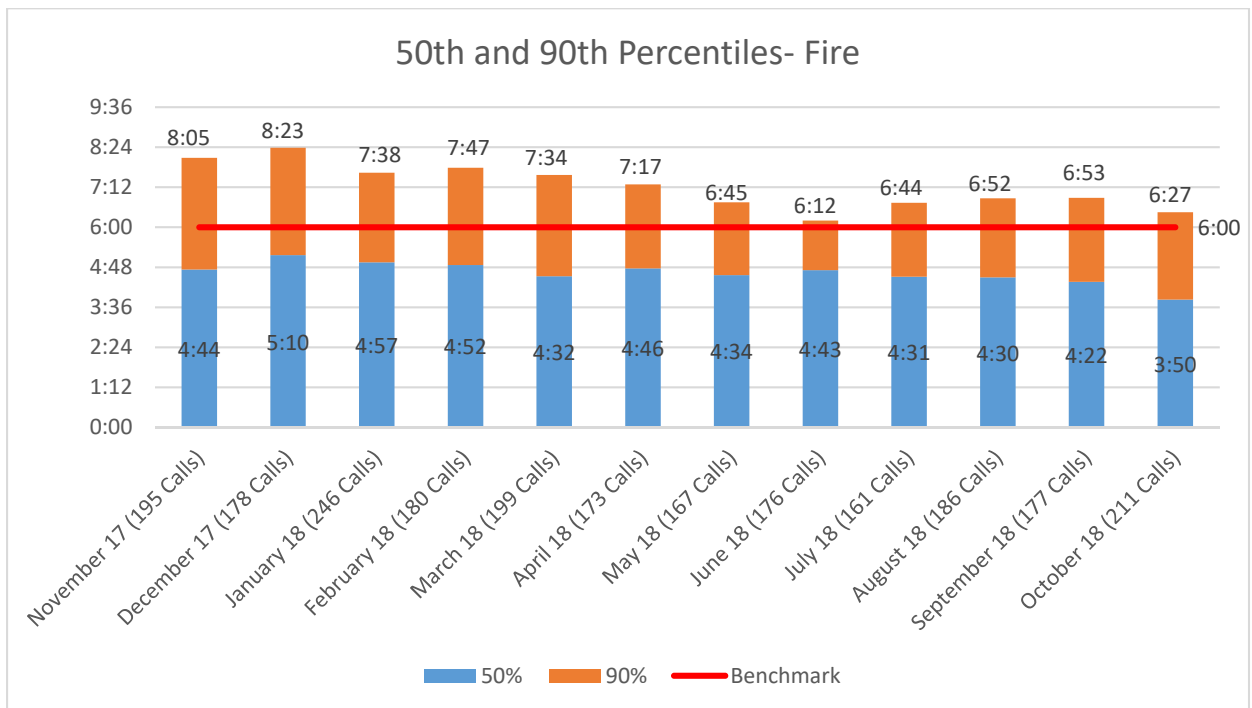
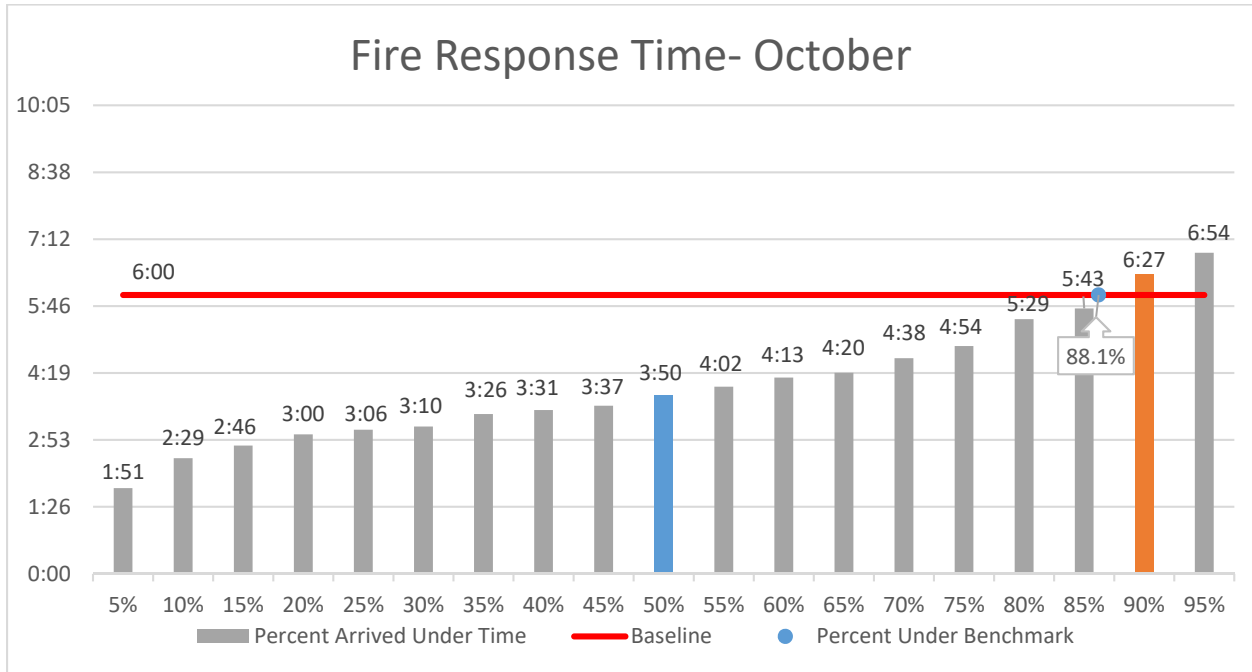




Bloomington Fire Dept.

Fire Response Times

October 2018





Bloomington Fire Dept.

Monthly EMS Response Report

October 2018

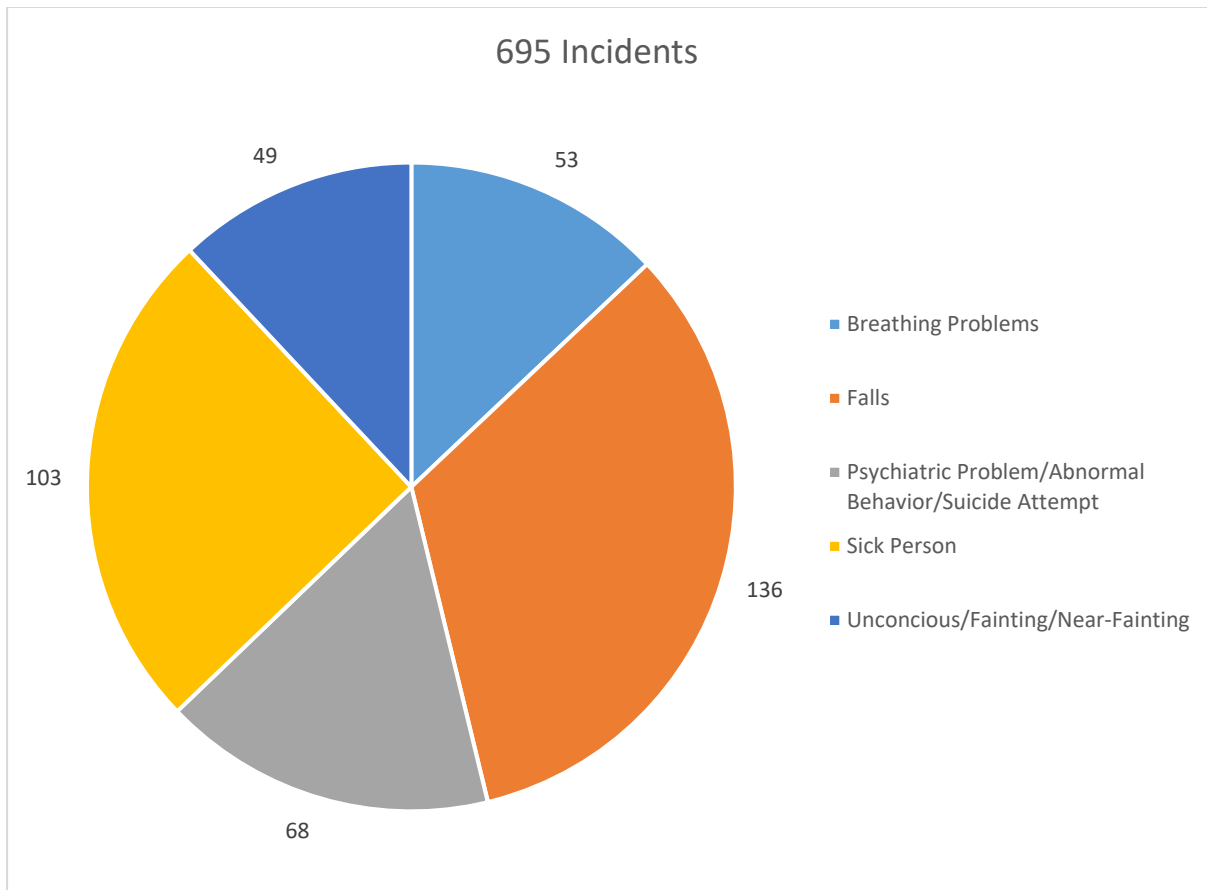


Total EMS Response: 695

Total Patients: 677

Total Transported: 559

Top 5 EMS Responses

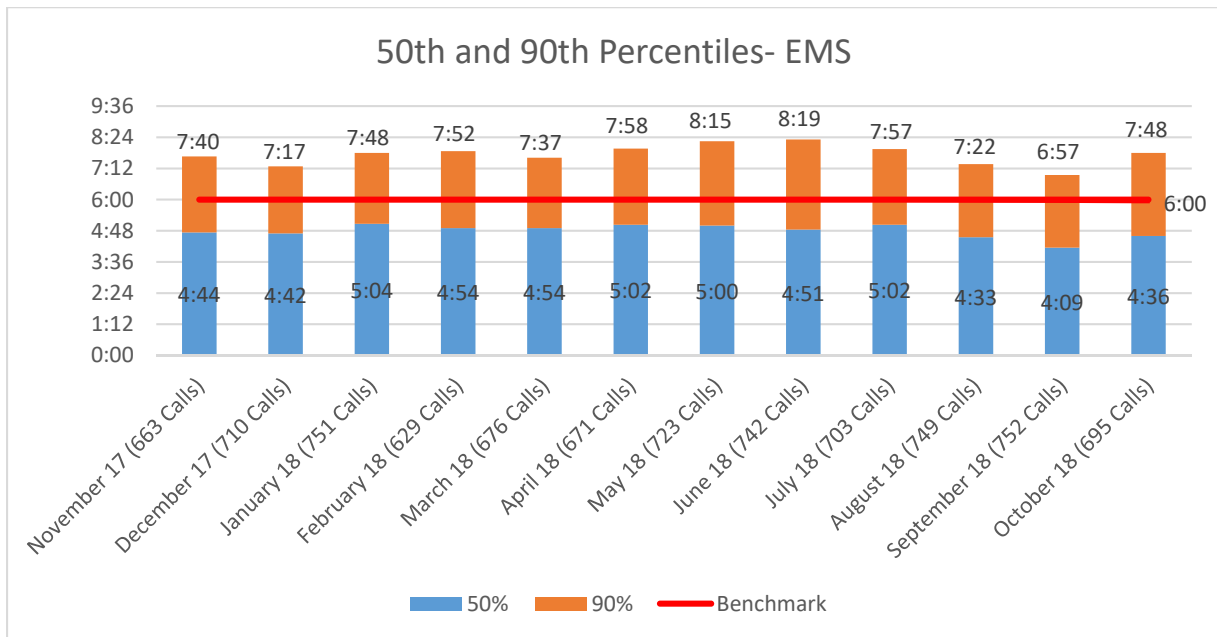
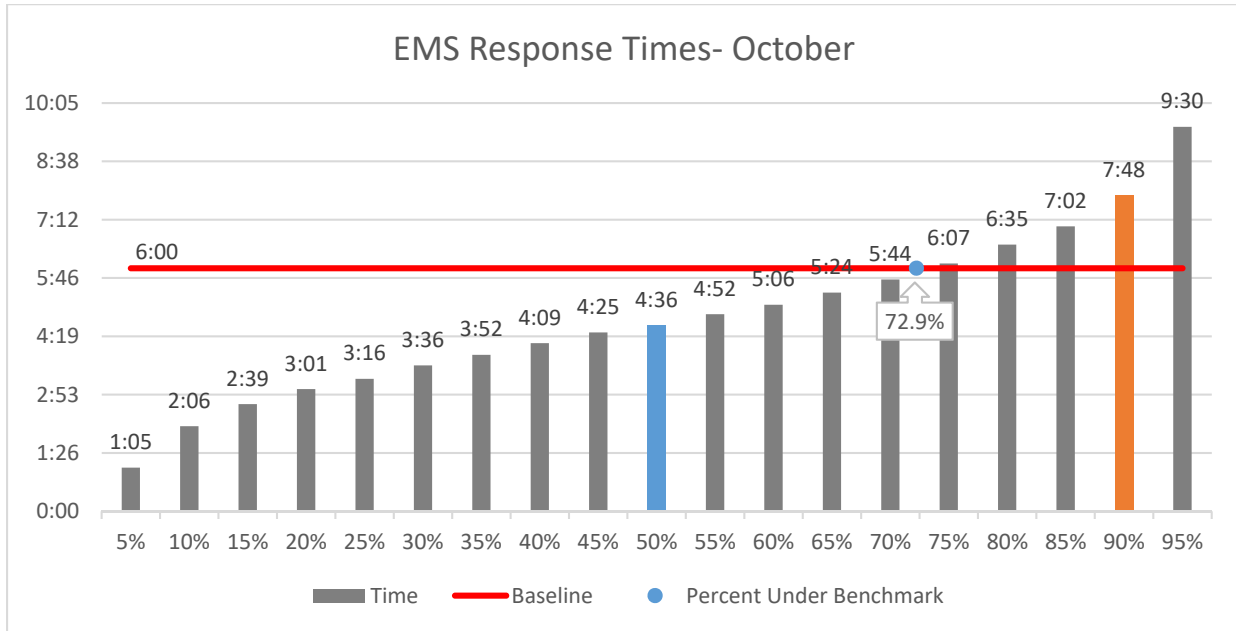




Bloomington Fire Dept.

EMS Response Times

October 2018



**Bloomington Comparison Report
October 2018**

	Current Month 10/2018	Previous Year 10/2017	Previous Month 09/2018
Charges			
BLS	244	410	314
ALS	140	226	193
ALS II	3	7	5
Charge Totals	\$292,709.78	\$470,968.51	\$394,002.27
Payments			
Payments	\$183,899.70	\$154,721.73	\$147,575.99
Bad Debt W/O	\$73,583.92	\$35,224.47	\$61,737.06
Cont/Misc W/O	\$222,070.02	\$170,265.28	\$174,969.85

October 2018 Operations Report

