

Charge Type Detail Report (Trip Date)

Period IS 201809 OR -201809; AND Company IS City of Bloomington

	<u>Count</u>	<u>Dollars</u>
City of Bloomington		
ALS Emergency		
BLFD ALS Emergency Base Rate	193	151,093.91
Totals For Type: ALS Emergency	193	\$ 151,093.91
ALS Emergency II		
BLFD ALS II Emergency Base Rat	5	4,390.60
Totals For Type: ALS Emergency II	5	\$ 4,390.60
BLS Emergency		
BLFD BLS Emergency Base Rate	312	203,523.56
Totals For Type: BLS Emergency	312	\$ 203,523.56
BLS Non Emergency		
BLFD BLS Non Emergency Base	2	1,304.76
Totals For Type: BLS Non Emergency	2	\$ 1,304.76
Mileage		
BLFD Mileage	1,451	22,708.39
Totals For Type: Mileage	1,451	\$ 22,708.39
Misc Fee		
Interest	5,846	58.46
Totals For Type: Misc Fee	5,846	\$ 58.46
Misc. Services		
BLFD ALS Intercept Fee	11	3,338.39
BLFD ALSII Intercept Fee	3	1,317.78
BLFD Standby EMS Chase Non Pro	1	121.00
BLFD Standby Medic College Spo	4	880.00
BLFD Standby Medic Comm Event	3	1,452.00
BLFD Standby Medic H.S. Sport	11	2,420.00
BLFD Standby Medic Non Profit	1	242.00
Totals For Type: Misc. Services	34	\$ 9,771.17

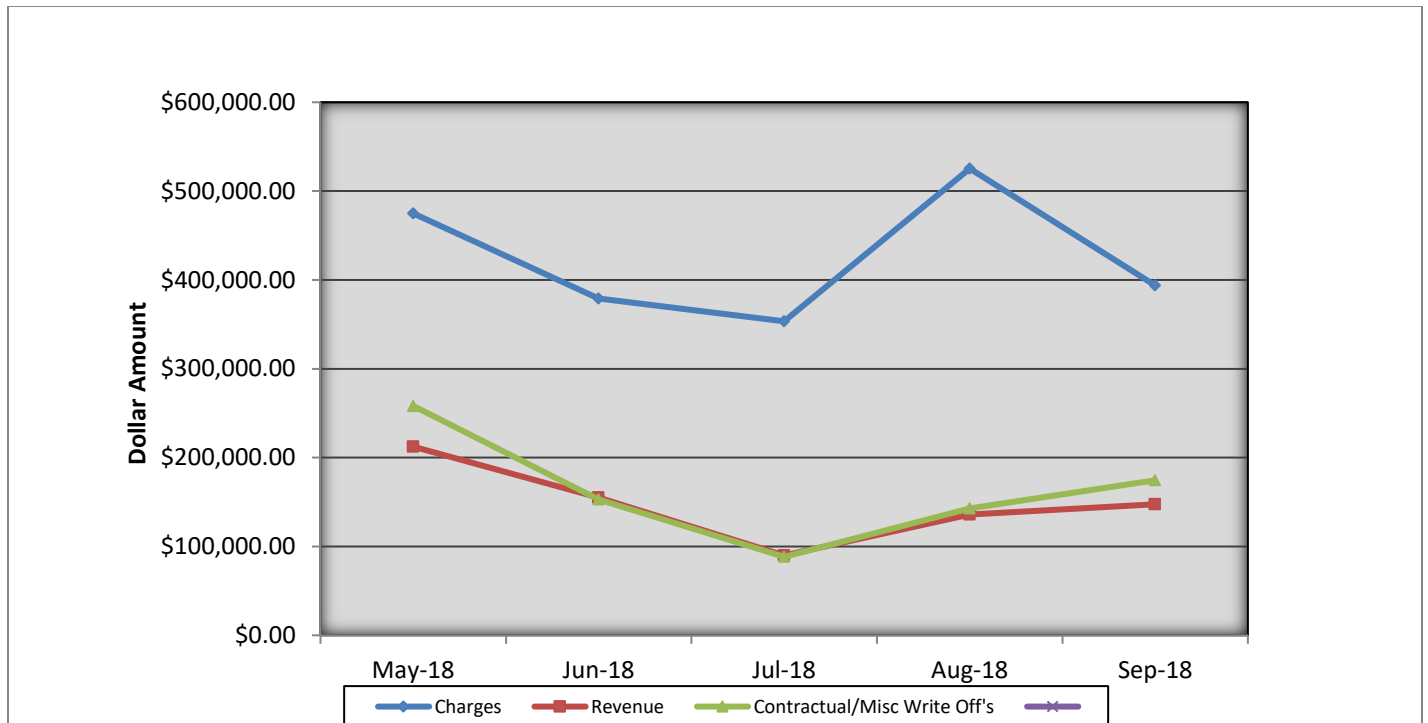
Charge Type Detail Report (Trip Date)

Period IS 201809 OR -201809; AND Company IS City of Bloomington

	<u>Count</u>	<u>Dollars</u>
City of Bloomington (cont.)		
Misc. Supplies		
BLFD Oxygen	40	760.00
Totals For Type: Misc. Supplies	40	\$ 760.00
Treatment No Transport		
BLFD Treatment no transport	2	391.42
Totals For Type: Treatment No Transport	2	\$ 391.42
Totals For Company: City of Bloomington	7885	\$394,002.27
Report Totals:	7,885	\$ 394,002.27

Bloomington Fire Dept EMS Billing

Fiscal Year 2018/2019



- Charges represent billings for emergency transports, intercepts, and ambulance standby's.
- Revenue represents the amount of revenue collected for emergency transports, intercepts, and ambulance stand by's.
- Contractual/Miscellaneous Write Off's- are the combination of contractual allowances and miscellaneous write off's. Contractuals are the amounts above what federal and state mandated carriers allow for EMS services. Miscellaneous write off's include Financial Hardships, Bankruptcies, Small Balances, Workman's Compensation, and Incarcerated Patients.
- Bad Debt-Write off's on the accounts forwarded to a third party collection agency for further collection processing \$61,737.06

Totals Breakdown

Charge total-\$394,002.27

Revenue-\$147,575.99

Contractuals/Miscellaneous Write Offs \$174,969.85



Bloomington Fire Dept.

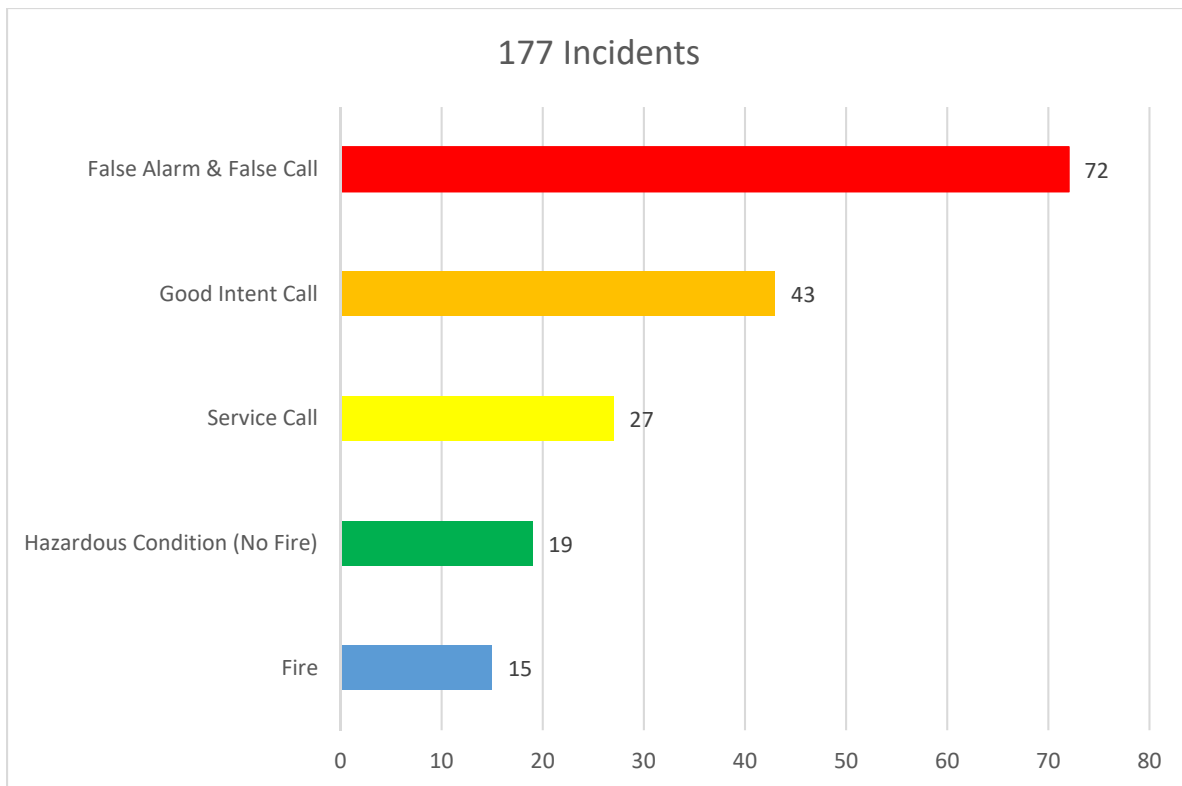
Monthly Fire Response Report

September 2018



Total Fire Response:	177
Total Structure Fires:	7
Total Estimated Dollar Loss (Property and Contents):	\$128,500

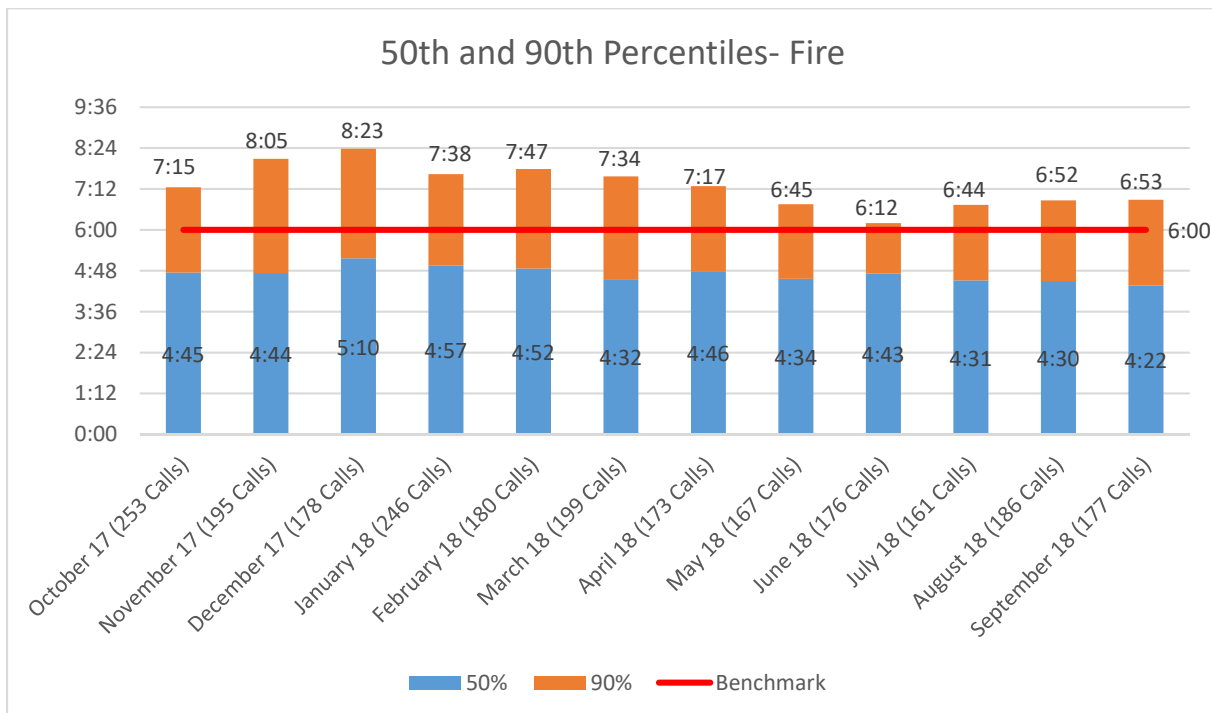
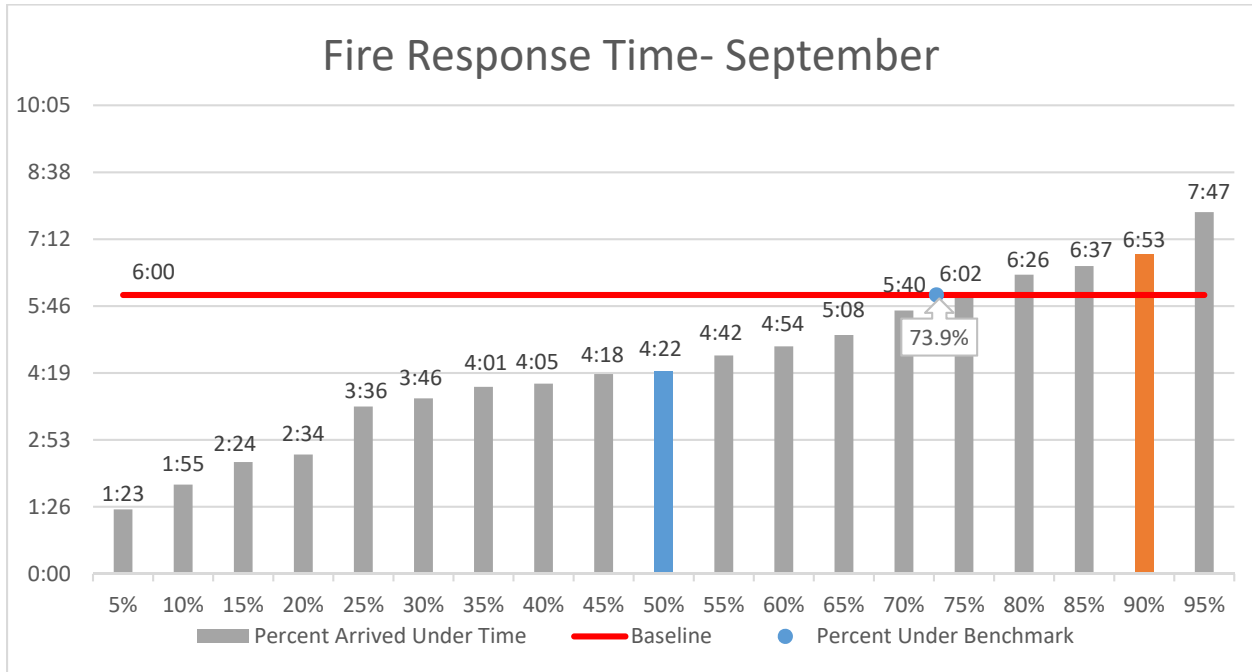
Top 5 Fire Responses





Bloomington Fire Dept.

Fire Response Times September 2018





Bloomington Fire Dept.

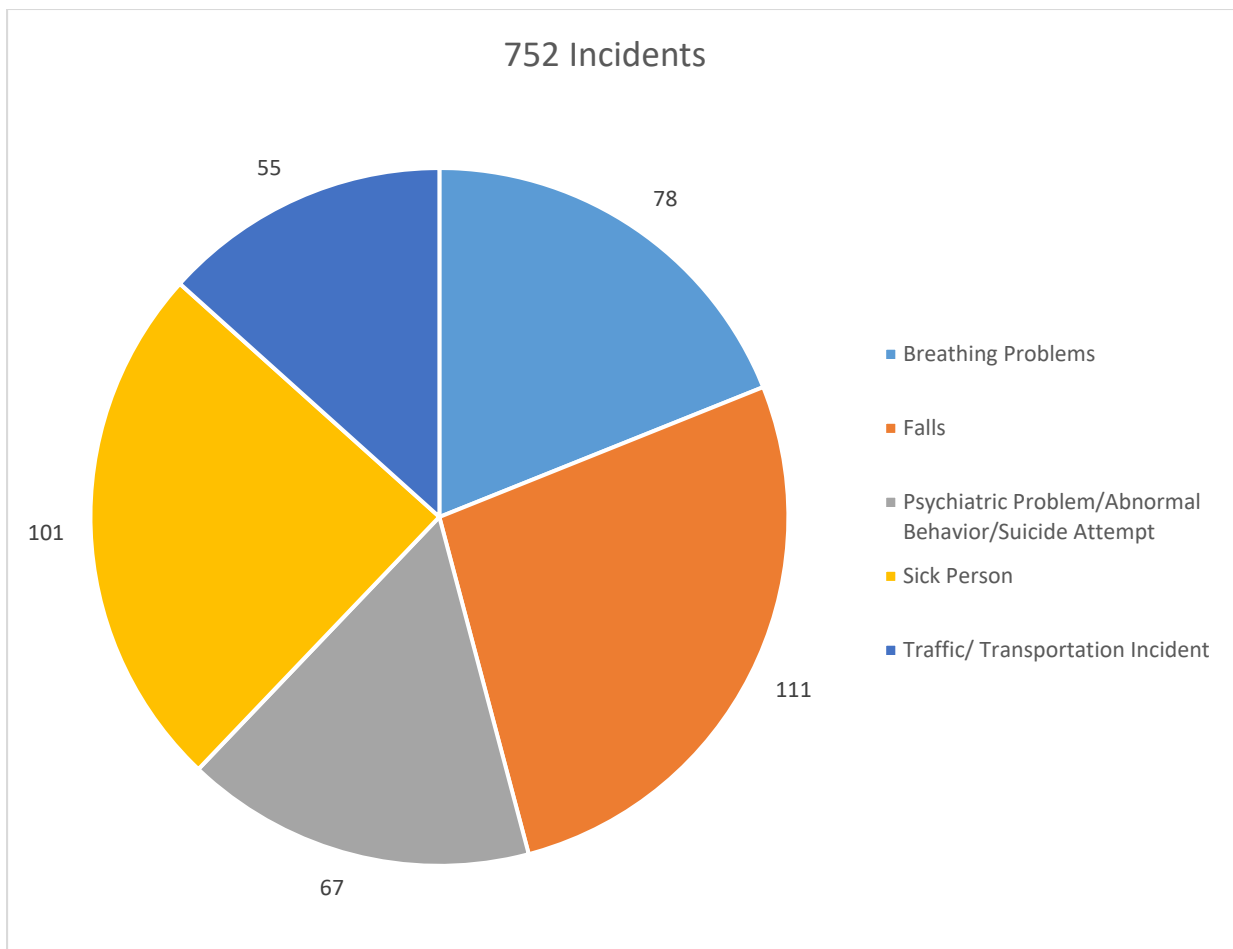
Monthly EMS Response Report

September 2018



Total EMS Response: 752
Total Patients: 709
Total Transported: 584

Top 5 EMS Responses





Bloomington Fire Dept.

EMS Response Times

September 2018

