

Charge Type Detail Report (Trip Date)

Period IS 201808 OR -201808; AND Company IS City of Bloomington

	<u>Count</u>	<u>Dollars</u>
City of Bloomington		
ALS Emergency		
BLFD ALS Emergency Base Rate	276.0	216,072.12
Totals For Type: ALS Emergency	276.0	\$ 216,072.12
ALS Emergency II		
BLFD ALS II Emergency Base Rat	6.0	5,268.72
Totals For Type: ALS Emergency II	6.0	\$ 5,268.72
BLS Emergency		
BLFD BLS Emergency Base Rate	408.0	266,171.04
Totals For Type: BLS Emergency	408.0	\$ 266,171.04
Mileage		
BLFD Mileage	1,990.2	31,166.53
Totals For Type: Mileage	1,990.2	\$ 31,166.53
Misc Fee		
Credit balance applied	300.0	3.00
Interest	3,258.0	32.58
Totals For Type: Misc Fee	3,558.0	\$ 35.58
Misc. Services		
BLFD ALS Intercept Fee	14.0	4,248.86
Totals For Type: Misc. Services	14.0	\$ 4,248.86
Misc. Supplies		
BLFD Oxygen	95.0	1,805.00
Totals For Type: Misc. Supplies	95.0	\$ 1,805.00
Treatment No Transport		
BLFD Treatment no transport	3.0	587.13
Totals For Type: Treatment No Transport	3.0	\$ 587.13

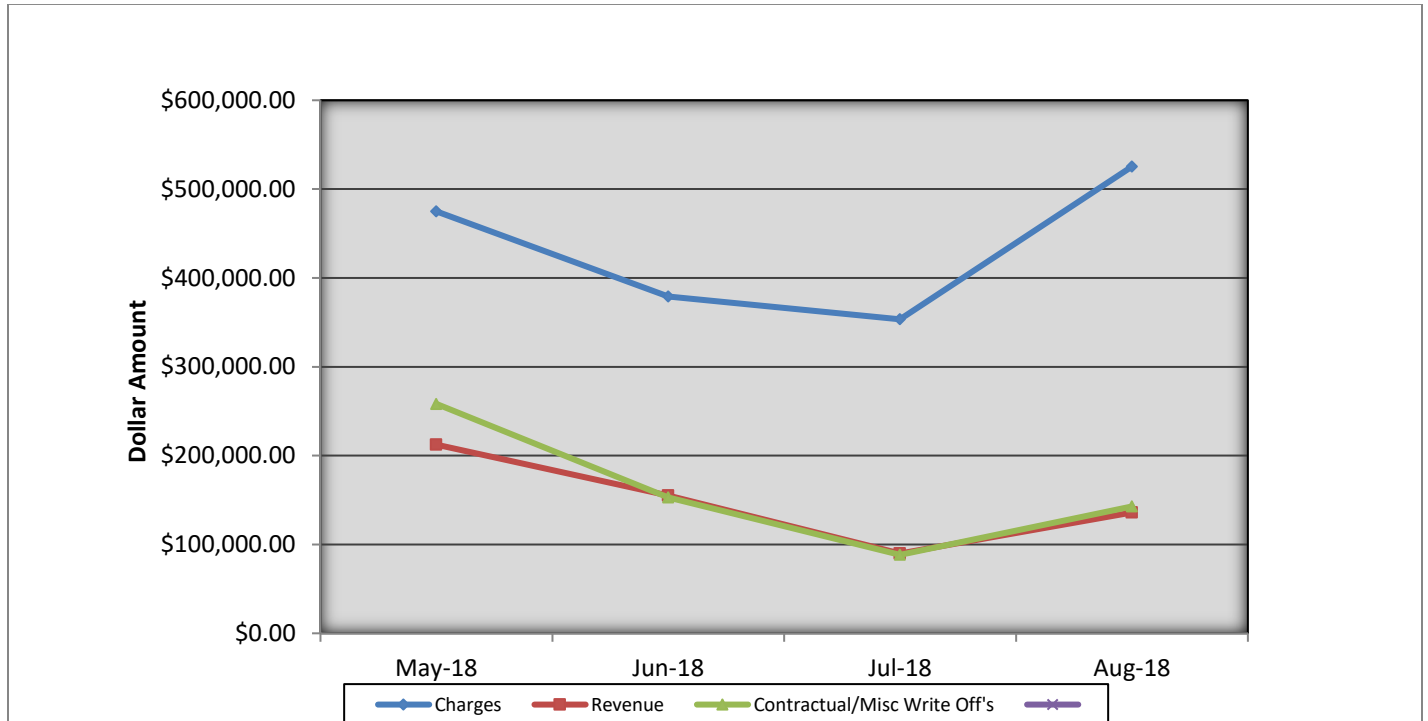
Charge Type Detail Report (Trip Date)

Period IS 201808 OR -201808; AND Company IS City of Bloomington

	<u>Count</u>	<u>Dollars</u>
Totals For Company: City of Bloomington	6350.2	\$525,354.98
Report Totals:	6,350.2	\$ 525,354.98

Bloomington Fire Dept EMS Billing

Fiscal Year 2018/2019



- Charges represent billings for emergency transports, intercepts, and ambulance standby's.
- Revenue represents the amount of revenue collected for emergency transports, intercepts, and ambulance stand by's.
- Contractual/Miscellaneous Write Off's- are the combination of contractual allowances and miscellaneous write off's. Contractuals are the amounts above what federal and state mandated carriers allow for EMS services. Miscellaneous write off's include Financial Hardships, Bankruptcies, Small Balances, Workman's Compensation, and Incarcerated Patients.
- Bad Debt-Write off's on the accounts forwarded to a third party collection agency for further collection processing \$33,248.20

Totals Breakdown

Charge total-\$525,354.98

Revenue-\$136,108.69

Contractuals/Miscellaneous Write Offs \$142,841.59



Bloomington Fire Dept.

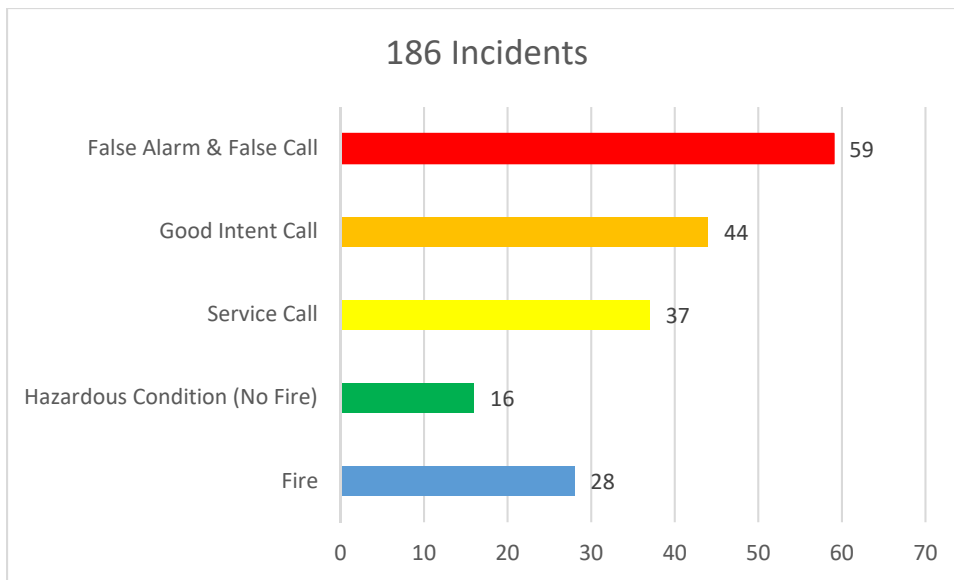
Monthly Fire Response Report

August 2018



Total Fire Response:	186
Total Structure Fires:	15
Total Estimated Dollar Loss (Property and Contents):	\$104,300

Top 5 Fire Responses





Bloomington Fire Dept.

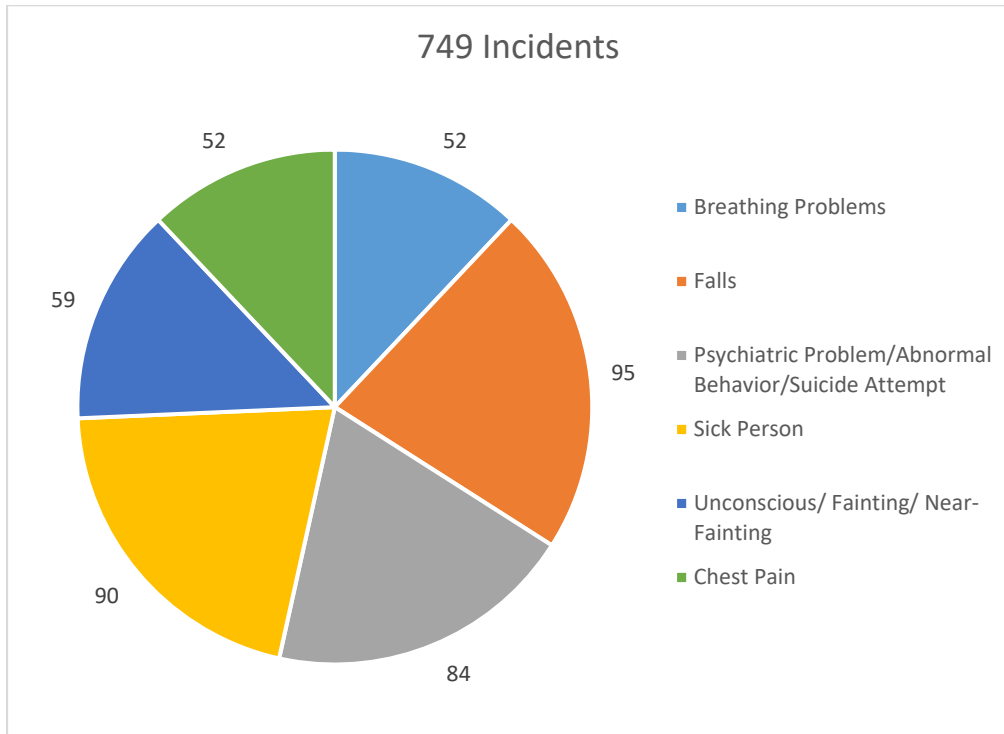
Monthly EMS Response Report

August 2018



Total EMS Response: 749
Total Patients: 702
Total Transported: 582

Top 5 EMS Responses

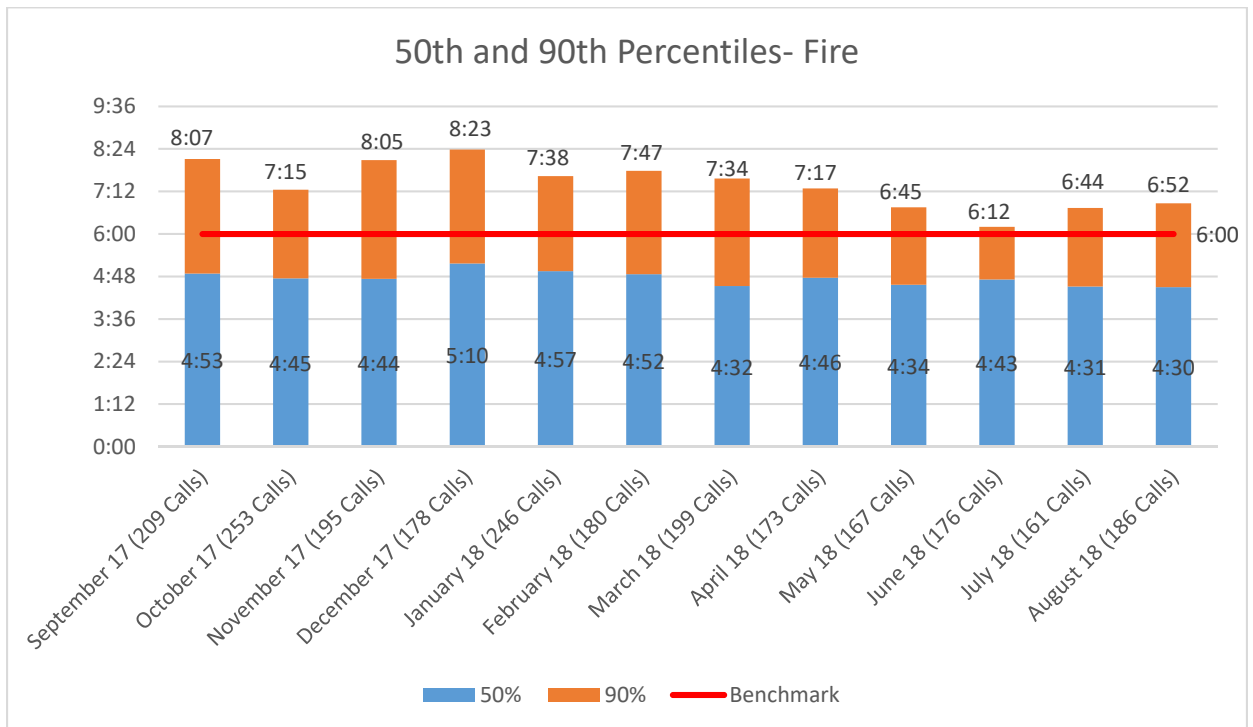
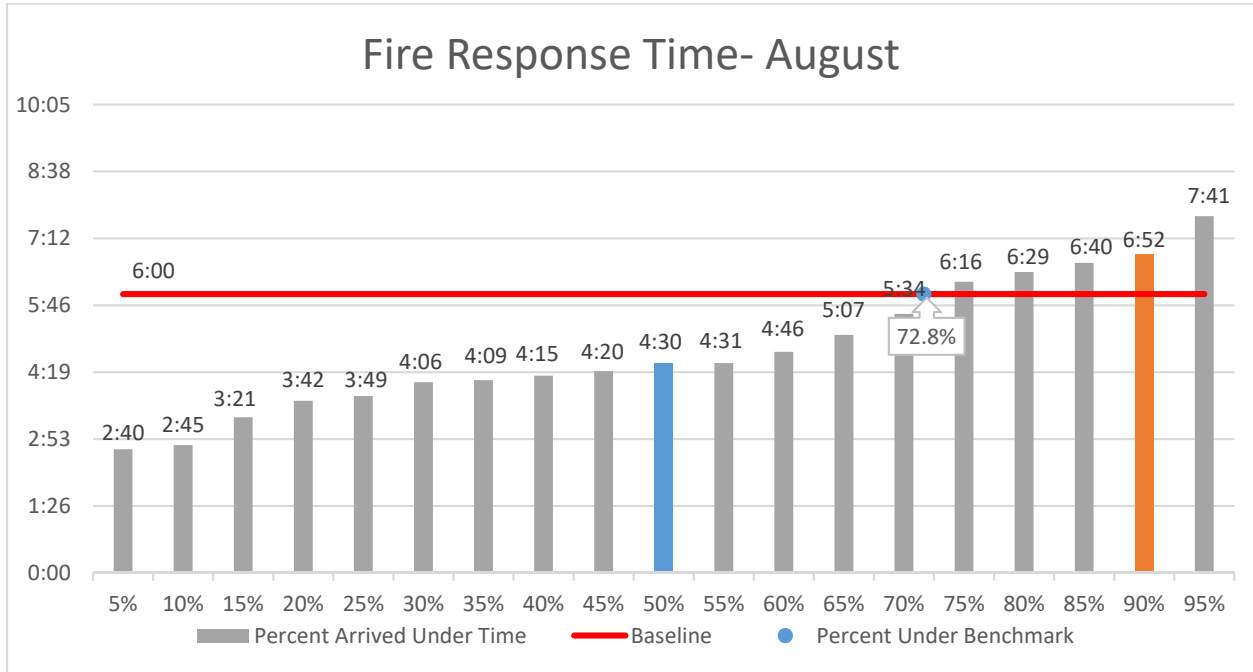




Bloomington Fire Dept.

Fire Response Times

August 2018





Bloomington Fire Dept.

EMS Response Times August 2018

