

# Charge Type Detail Report (Trip Date)

Period IS 201807 OR -201807; AND Company IS City of Bloomington

	<u>Count</u>	<u>Dollars</u>
<b>City of Bloomington</b>		
<b>ALS Emergency</b>		
BLFD ALS Emergency Base Rate	184.0	144,070.88
<b>Totals For Type: ALS Emergency</b>	<b>184.0</b>	<b>\$ 144,070.88</b>
<b>ALS Emergency II</b>		
BLFD ALS II Emergency Base Rat	3.0	2,634.36
<b>Totals For Type: ALS Emergency II</b>	<b>3.0</b>	<b>\$ 2,634.36</b>
<b>BLS Emergency</b>		
BLFD BLS Emergency Base Rate	277.0	180,709.26
<b>Totals For Type: BLS Emergency</b>	<b>277.0</b>	<b>\$ 180,709.26</b>
<b>Mileage</b>		
BLFD Mileage	1,349.8	21,145.05
<b>Totals For Type: Mileage</b>	<b>1,349.8</b>	<b>\$ 21,145.05</b>
<b>Misc Fee</b>		
Interest	8,656.0	86.56
<b>Totals For Type: Misc Fee</b>	<b>8,656.0</b>	<b>\$ 86.56</b>
<b>Misc. Services</b>		
BLFD ALS Intercept Fee	9.0	2,722.57
<b>Totals For Type: Misc. Services</b>	<b>9.0</b>	<b>\$ 2,722.57</b>
<b>Misc. Supplies</b>		
BLFD Oxygen	58.0	1,102.00
<b>Totals For Type: Misc. Supplies</b>	<b>58.0</b>	<b>\$ 1,102.00</b>
<b>Treatment No Transport</b>		
BLFD Treatment no transport	5.0	978.55
<b>Totals For Type: Treatment No Transport</b>	<b>5.0</b>	<b>\$ 978.55</b>
<b>Totals For Company: City of Bloomington</b>	<b>10541.8</b>	<b>\$353,449.23</b>

RescueNet™ Reporting

# Charge Type Detail Report (Trip Date)

Period IS 201807 OR -201807; AND Company IS City of Bloomington

---

	<u>Count</u>	<u>Dollars</u>
<b>Report Totals:</b>	<b>10,541.8</b>	<b>\$ 353,449.23</b>

**Bloomington Comparison Report  
July 2018**

	<b>Current Month 07/2018</b>	<b>Previous Year 07/2017</b>	<b>Previous Month 06/2018</b>
<b>Charges</b>			
<b>BLS</b>	277	260	300
<b>ALS</b>	184	169	188
<b>ALS II</b>	3	1	7
<b>Charge Totals</b>	<b>\$353,449.23</b>	<b>\$315,847.60</b>	<b>\$379,001.63</b>
<b>Payments</b>			
<b>Payments</b>	\$89,870.41	\$114,061.16	\$155,066.10
<b>Bad Debt W/O</b>	\$52,138.07	\$50,122.70	\$57,072.66
<b>Cont/Misc W/O</b>	\$88,298.20	\$158,161.15	\$153,082.30



# Bloomington Fire Dept.

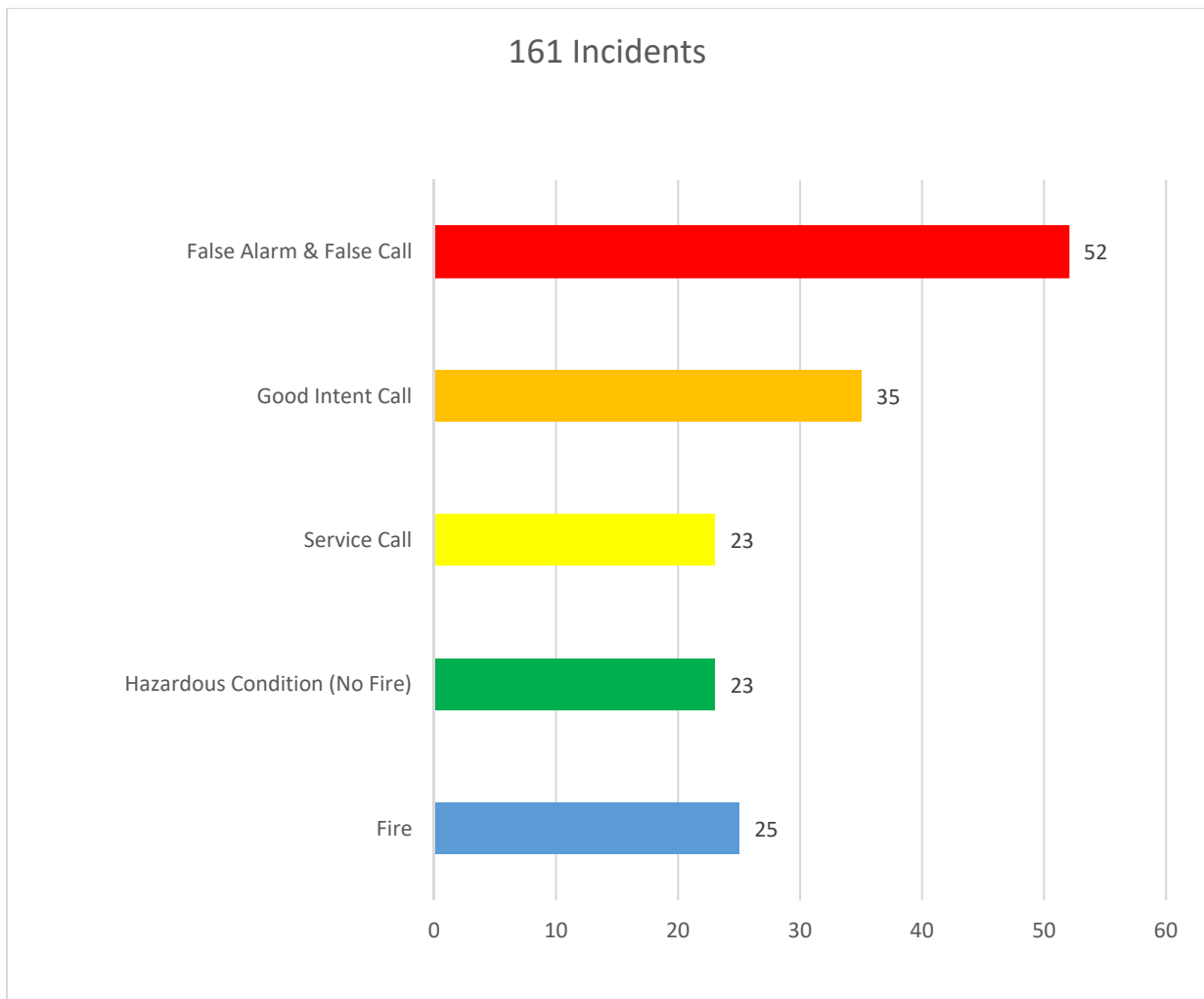
## Monthly Fire Response Report

### July 2018



Total Fire Response: 161  
Total Structure Fires: 13  
Total Estimated Dollar Loss (Property and Contents): \$3,530

#### Top 5 Fire Responses



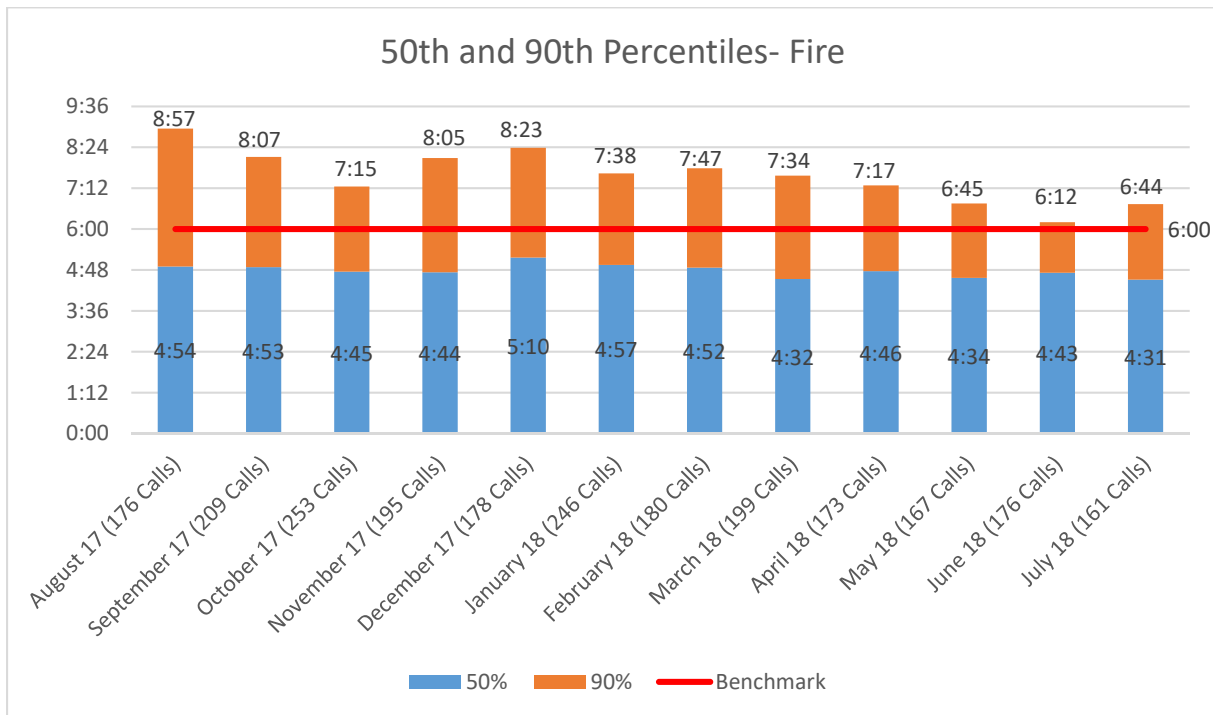
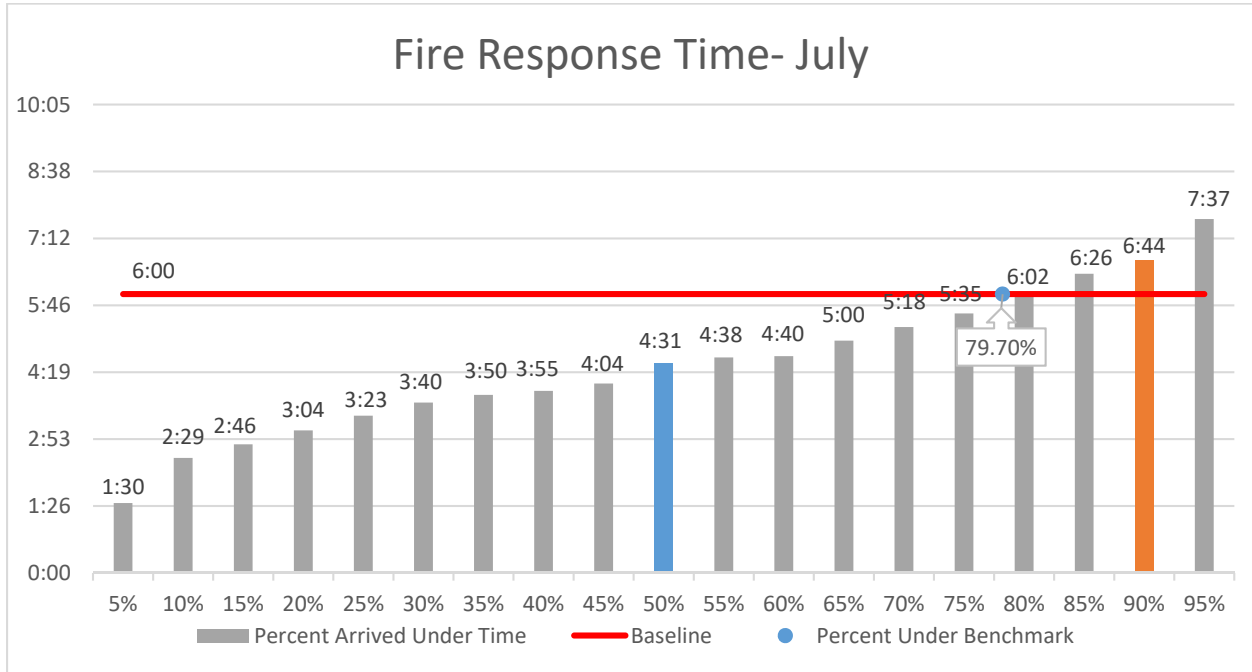




# Bloomington Fire Dept.

## Fire Response Times

July 2018





# Bloomington Fire Dept.

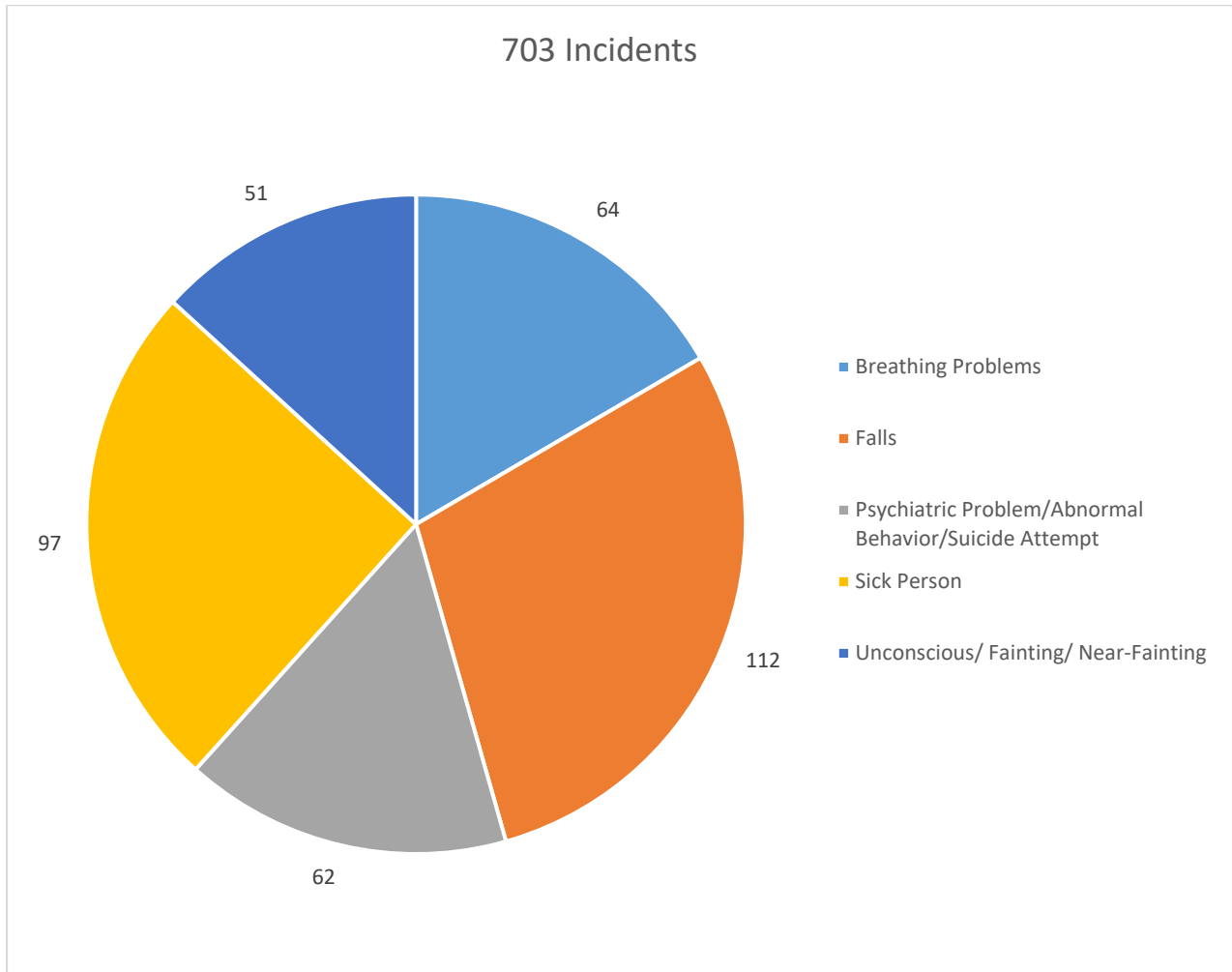
## Monthly EMS Response Report

### July 2018



Total EMS Response: 703  
Total Patients: 676  
Total Transported: 548

#### Top 5 EMS Responses

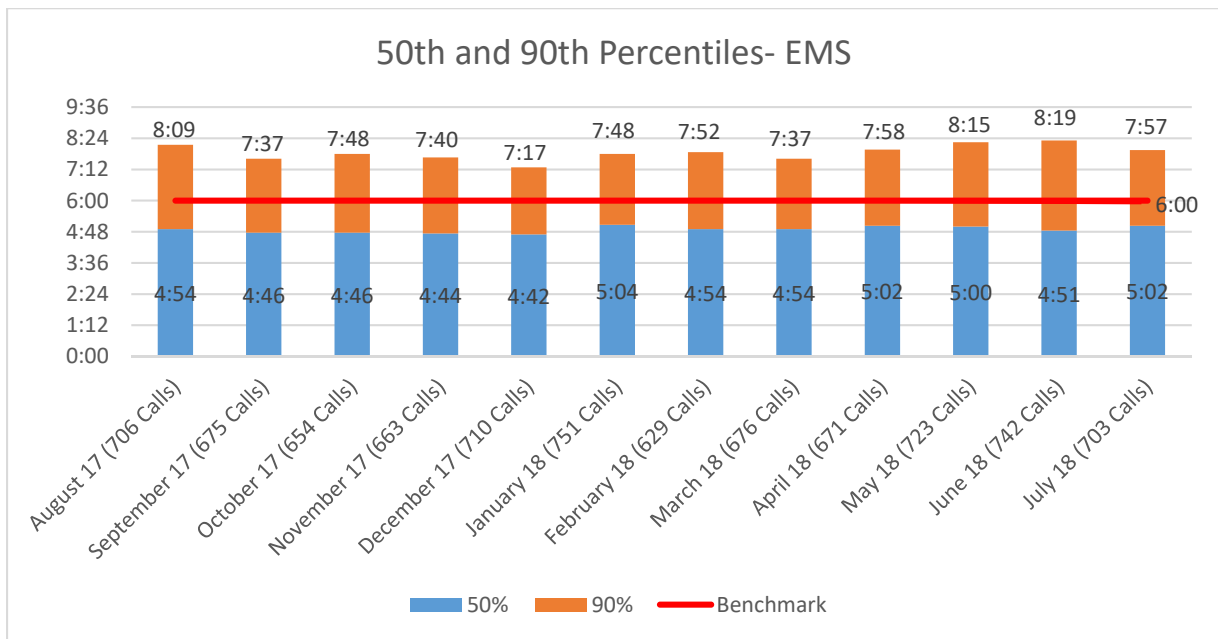
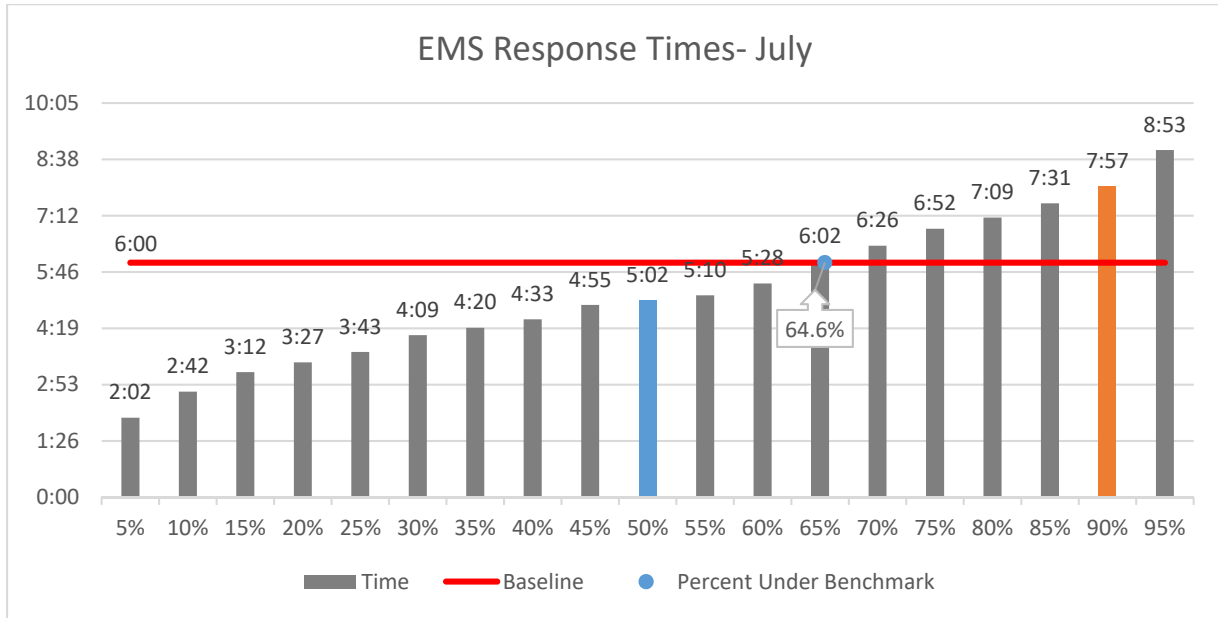




# Bloomington Fire Dept.

## EMS Response Times

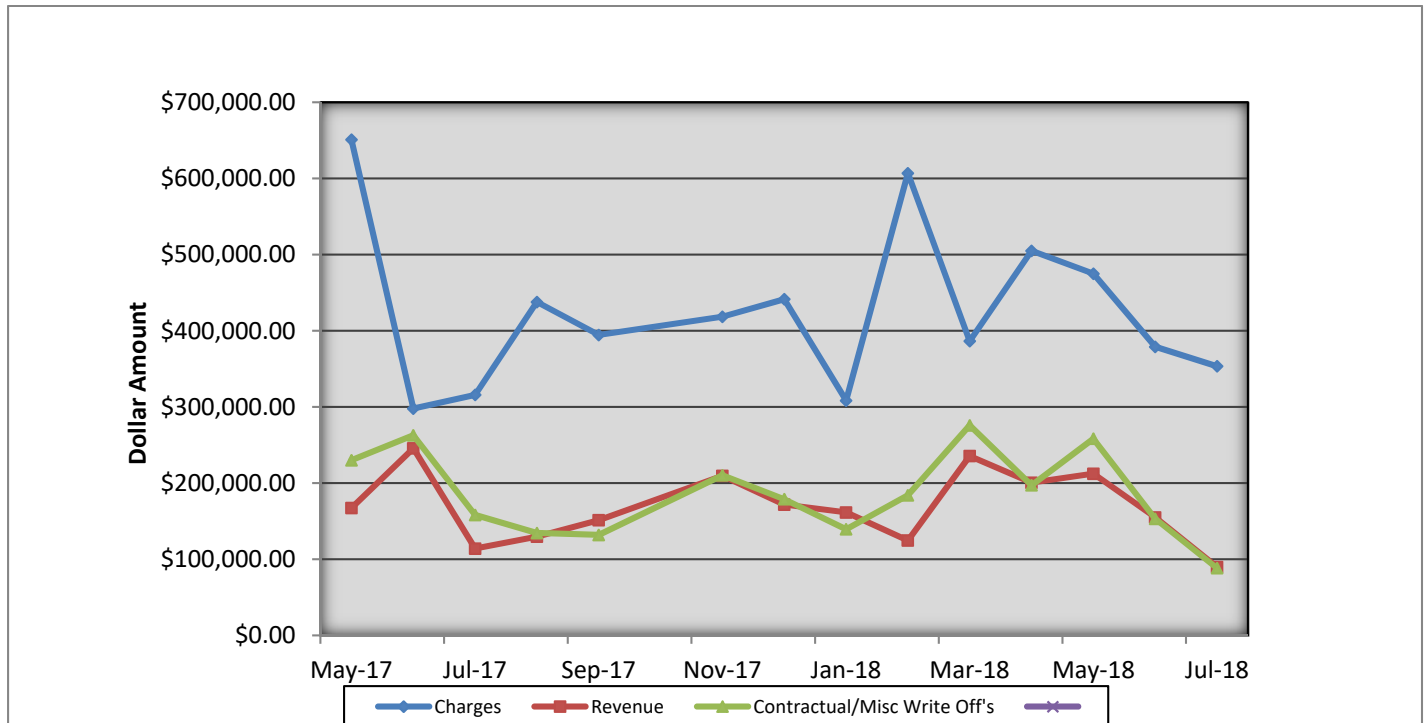
July 2018





## Bloomington Fire Dept EMS Billing

Fiscal Year 2017/2018



- Charges represent billings for emergency transports, intercepts, and ambulance standby's.
- Revenue represents the amount of revenue collected for emergency transports, intercepts, and ambulance stand by's.
- Contractual/Miscellaneous Write Off's- are the combination of contractual allowances and miscellaneous write off's. Contractuals are the amounts above what federal and state mandated carriers allow for EMS services. Miscellaneous write off's include Financial Hardships, Bankruptcies, Small Balances, Workman's Compensation, and Incarcerated Patients.
- Bad Debt-Write off's on the accounts forwarded to a third party collection agency for further collection processing \$52,138.07

### Totals Breakdown

Charge total-\$353,449.23

Revenue-\$89,870.41

Contractuals/Miscellaneous Write Offs \$88,298.20