

Charge Type Detail Report (Trip Date)

Period IS -201806 OR 201806; AND Company IS City of Bloomington

| | <u>Count</u> | <u>Dollars</u> |
|--|----------------|----------------------|
| City of Bloomington | | |
| ALS Emergency | | |
| BLFD ALS Emergency Base Rate | 188.0 | 147,225.16 |
| Totals For Type: ALS Emergency | 188.0 | \$ 147,225.16 |
| ALS Emergency II | | |
| BLFD ALS II Emergency Base Rat | 7.0 | 6,146.84 |
| Totals For Type: ALS Emergency II | 7.0 | \$ 6,146.84 |
| BLS Emergency | | |
| BLFD BLS Emergency Base Rate | 300.0 | 195,733.00 |
| Totals For Type: BLS Emergency | 300.0 | \$ 195,733.00 |
| Mileage | | |
| BLFD Mileage | 1,349.9 | 21,153.49 |
| Totals For Type: Mileage | 1,349.9 | \$ 21,153.49 |
| Misc Fee | | |
| Credit balance applied | 131.0 | 1.31 |
| Interest | 2,710.0 | 27.10 |
| Totals For Type: Misc Fee | 2,841.0 | \$ 28.41 |
| Misc. Services | | |
| BLFD ALS Intercept Fee | 14.0 | 4,222.34 |
| BLFD Standby EMS Chase Commerc | 9.0 | 2,178.00 |
| BLFD Standby Medic College Spo | 1.0 | 220.00 |
| Totals For Type: Misc. Services | 24.0 | \$ 6,620.34 |
| Misc. Supplies | | |
| BLFD Oxygen | 69.0 | 1,311.55 |
| Totals For Type: Misc. Supplies | 69.0 | \$ 1,311.55 |
| Treatment No Transport | | |
| BLFD Treatment no transport | 4.0 | 782.84 |

RescueNet™ Reporting

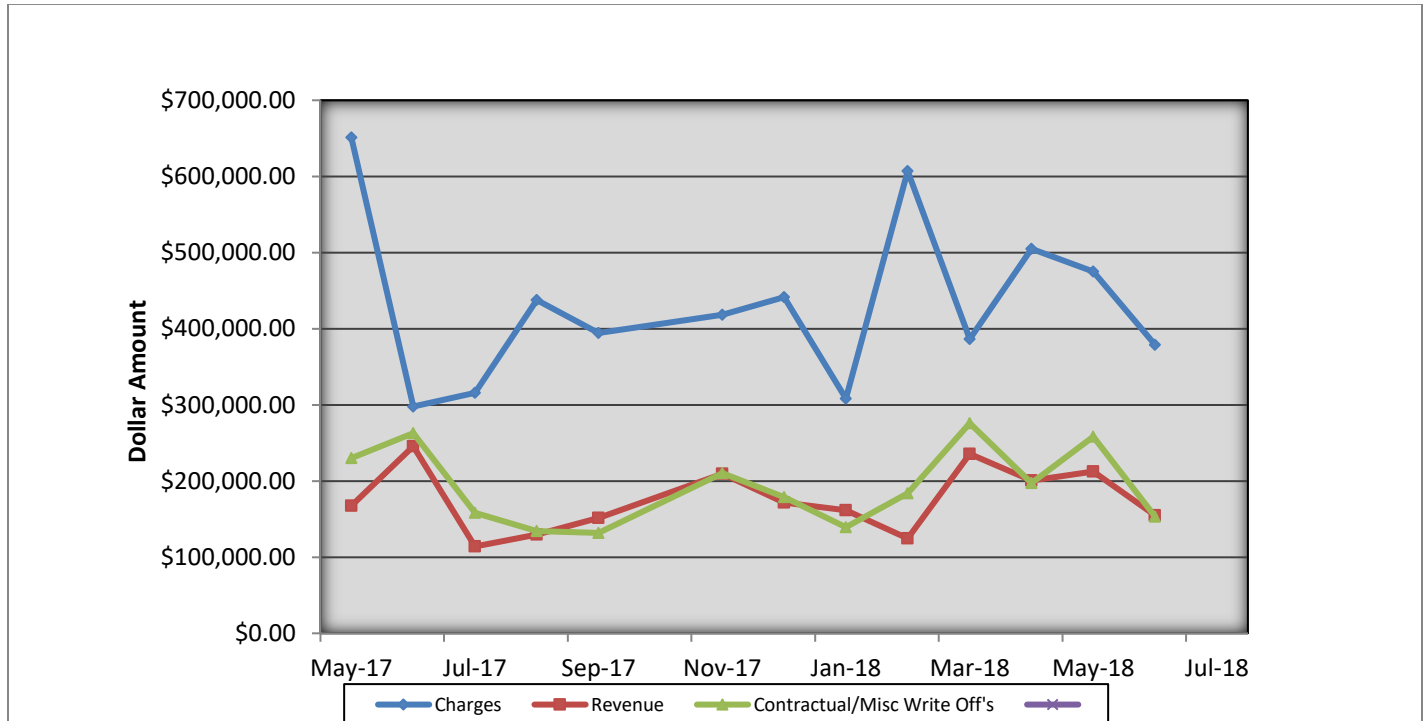
Charge Type Detail Report (Trip Date)

Period IS -201806 OR 201806; AND Company IS City of Bloomington

| | <u>Count</u> | <u>Dollars</u> |
|---|----------------|----------------------|
| City of Bloomington (cont.) | | |
| Totals For Type: Treatment No Transport | 4.0 | \$ 782.84 |
| Totals For Company: City of Bloomington | 4782.9 | \$379,001.63 |
| Report Totals: | 4,782.9 | \$ 379,001.63 |

Bloomington Fire Dept EMS Billing

Fiscal Year 2017/2018



- Charges represent billings for emergency transports, intercepts, and ambulance standby's.
- Revenue represents the amount of revenue collected for emergency transports, intercepts, and ambulance stand by's.
- Contractual/Miscellaneous Write Off's- are the combination of contractual allowances and miscellaneous write off's. Contractuals are the amounts above what federal and state mandated carriers allow for EMS services. Miscellaneous write off's include Financial Hardships, Bankruptcies, Small Balances, Workman's Compensation, and Incarcerated Patients.
- Bad Debt-Write off's on the accounts forwarded to a third party collection agency for further collection processing \$57,072.66

Totals Breakdown

Charge total-\$379,001.63

Revenue-\$155,066.10

Contractuals/Miscellaneous Write Offs \$153,082.30



Bloomington Fire Dept.

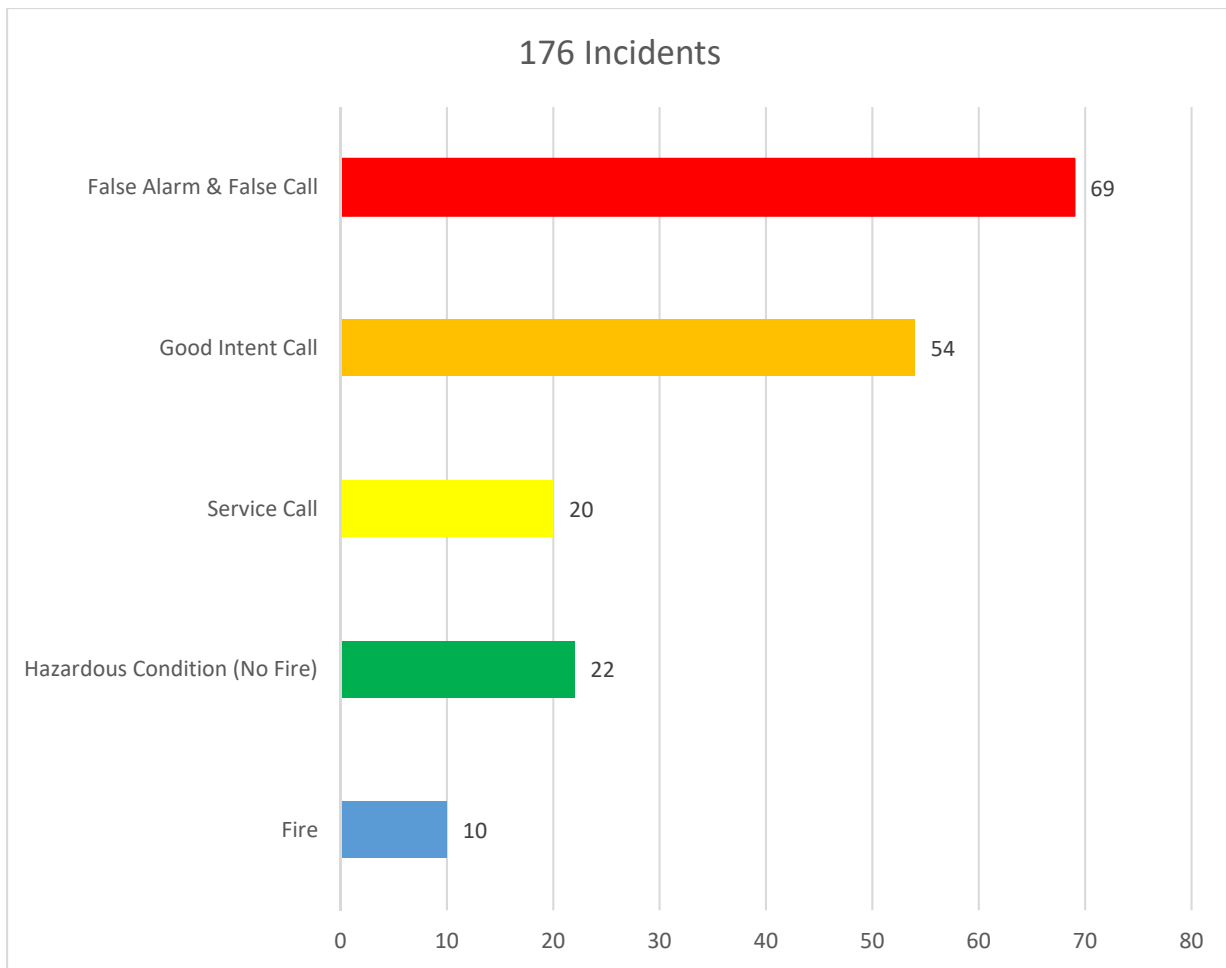
Monthly Fire Response Report

June 2018



| | |
|--|----------|
| Total Fire Response: | 176 |
| Total Structure Fires: | 5 |
| Total Estimated Dollar Loss (Property and Contents): | \$16,400 |

Top 5 Fire Responses

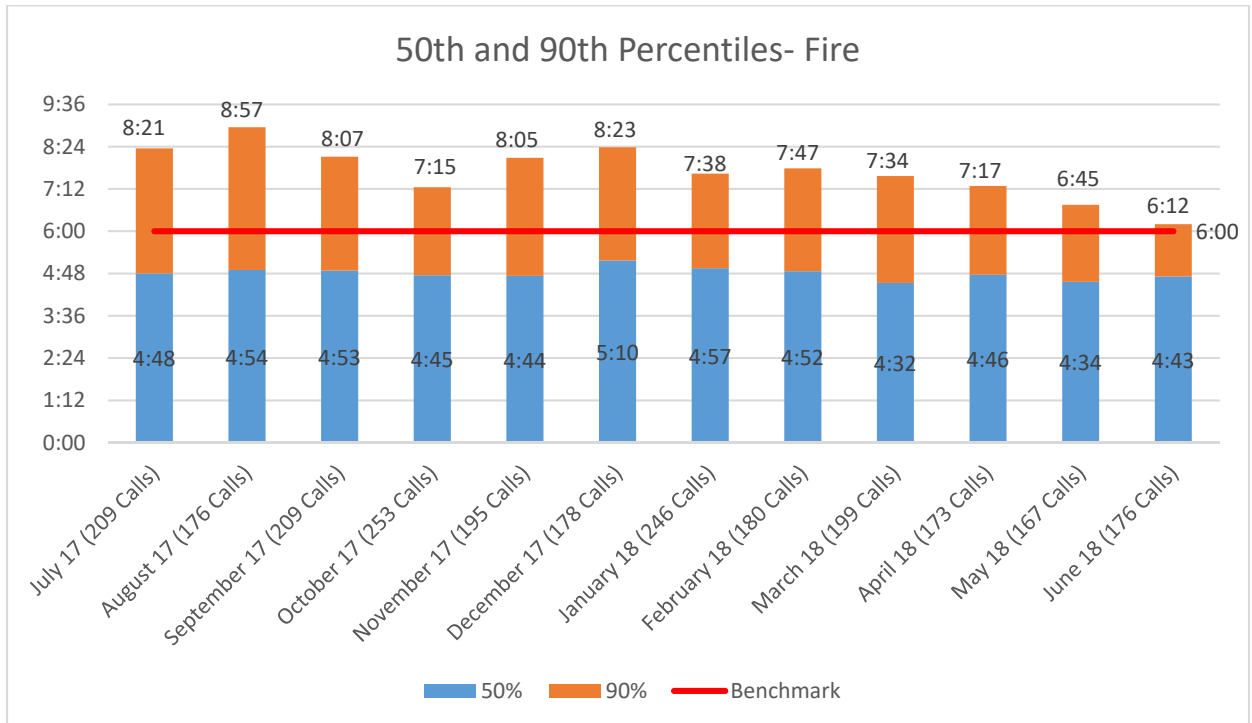
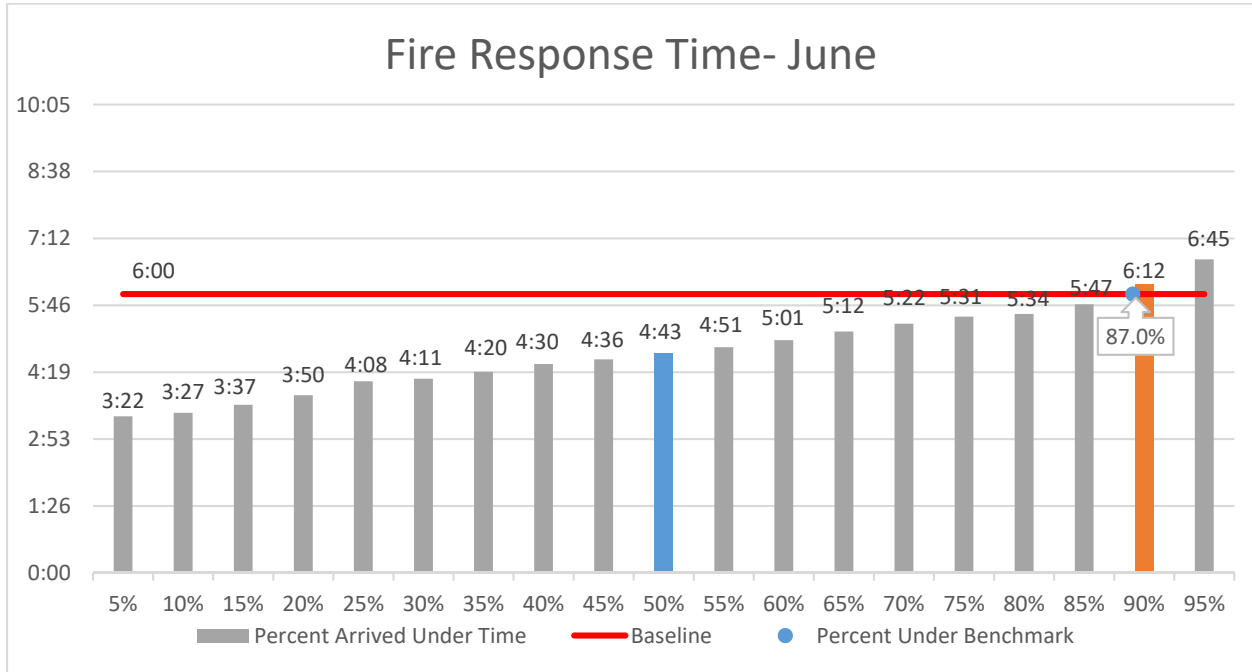




Bloomington Fire Dept.

Fire Response Times

June 2018





Bloomington Fire Dept.

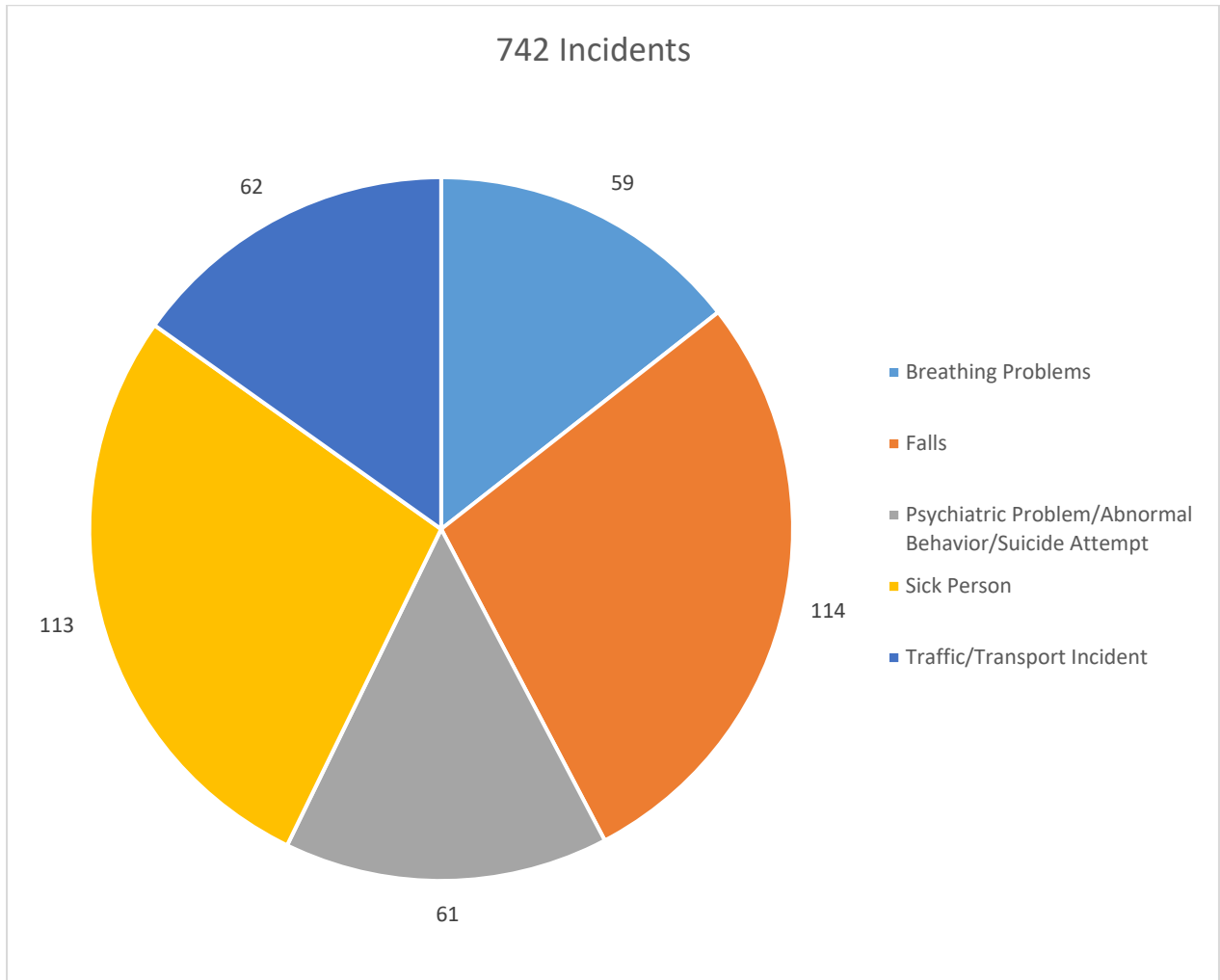
Monthly EMS Response Report

June 2018



Total EMS Response: 742
Total Patients: 688
Total Transported: 540

Top 5 EMS Responses





Bloomington Fire Dept.

EMS Response Times

June 2018

