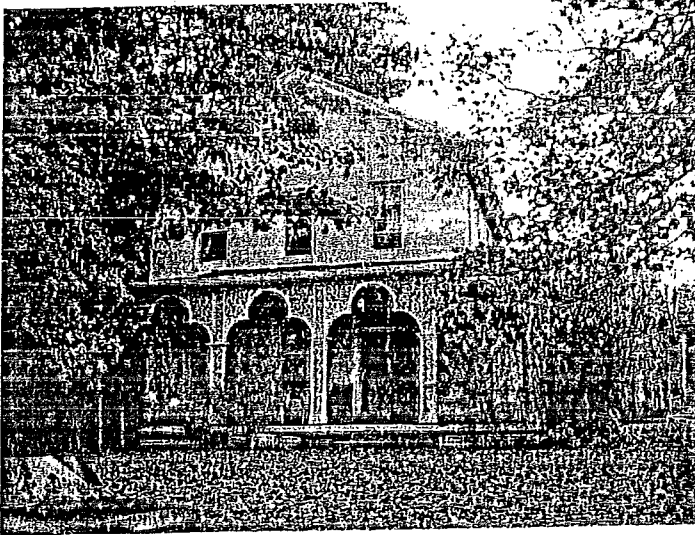


## The North Roosevelt Avenue Historic District



Mr. Horatio G. Bent Home. [401 W. Graham]  
Land owned by James Allin and developed by William Major.

This district includes an area bounded by Union Street, West Empire Street, North Lee Street, and North Madison Street. North Roosevelt Avenue is the central street. This is a neighborhood that was built up in the 1870's, a largely working class neighborhood, Irish and Hungarian immigrants, with historic connections to the Chicago and Alton Railroad shops. There were herringbone brick sidewalks and carriage houses of which some remnants are still to be seen today.

### S-4 Designation:

West Graham Street (north side)

303

401

North Lee Street (north side)

1205

North Roosevelt Avenue (west side)

1100

1102

1104

1220

North Roosevelt Avenue (east side)

1201

1213

### Non S-4 Designation:

West Graham Street (north side)

301

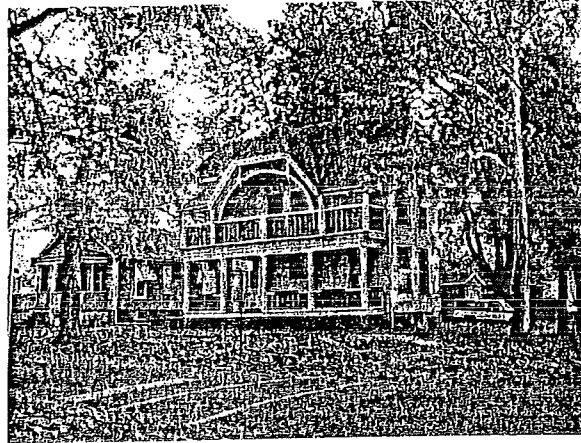
403

405

**Non S-4 Designation Continued:**

**West Graham Street (south side)**

- 302
- 304
- 306
- 404
- 406



**North Lee Street (east side)**

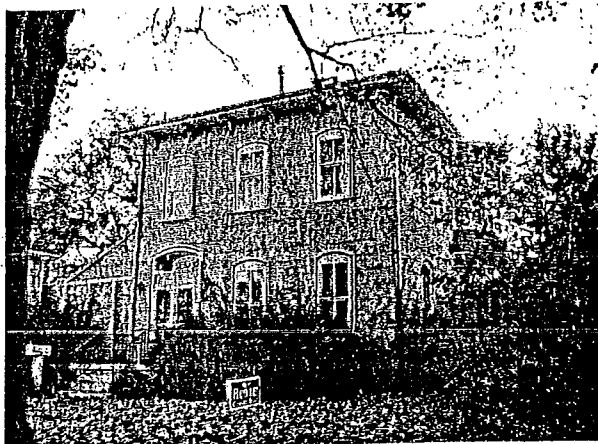
- 1001
- 1003
- 1005
- 1101
- 1203
- 1207
- 1209
- 1211
- 1217
- 1219
- 1221

**North Roosevelt Avenue (east side)**

- 1003
- 1005
- 1101
- 1103
- 1105
- 1203
- 1205
- 1207
- 1209
- 1211
- 1213
- 1215

**North Roosevelt Avenue (west side)**

- 1002
- 1004
- 1006
- 1102
- 1104
- 1204
- 1206



**Non-S-4 Designation Continued:**

**North Roosevelt Avenue (west side)**

1208  
1210  
1212  
1214  
1216  
1218  
1220

**North Madison Street (west side)**

1008  
1102  
1104  
1204  
1206  
1208  
1210  
1212  
1214  
1216  
1218  
1220  
1222

**Union Street (south side)**

306  
308  
404

**West Empire Street (north side)**

303



# NORTH ROOSEVELT AVENUE HISTORIC DISTRICT

Bloomington, Illinois

