

# Charge Type Detail Report (Trip Date)

Period IS 201802 OR -201802; AND Company IS City of Bloomington

	<u>Count</u>	<u>Dollars</u>
<b>City of Bloomington</b>		
<b>ALS Emergency</b>		
BLFD ALS Emergency Base Rate	305.0	238,592.95
<b>Totals For Type: ALS Emergency</b>	<b>305.0</b>	<b>\$ 238,592.95</b>
<b>ALS Emergency II</b>		
BLFD ALS II Emergency Base Rat	1.0	878.12
<b>Totals For Type: ALS Emergency II</b>	<b>1.0</b>	<b>\$ 878.12</b>
<b>BLS Emergency</b>		
BLFD BLS Emergency Base Rate	495.0	322,738.10
<b>Totals For Type: BLS Emergency</b>	<b>495.0</b>	<b>\$ 322,738.10</b>
<b>Mileage</b>		
BLFD Mileage	2,278.9	35,660.84
<b>Totals For Type: Mileage</b>	<b>2,278.9</b>	<b>\$ 35,660.84</b>
<b>Misc Fee</b>		
Credit balance applied	29.0	0.29
Interest	1,539.0	15.39
<b>Totals For Type: Misc Fee</b>	<b>1,568.0</b>	<b>\$ 15.68</b>
<b>Misc. Services</b>		
BLFD ALS Intercept Fee	14.0	4,231.18
BLFD Stby EMS Chs Comm 15 min	71.0	2,147.75
<b>Totals For Type: Misc. Services</b>	<b>85.0</b>	<b>\$ 6,378.93</b>
<b>Misc. Supplies</b>		
BLFD Oxygen	93.0	1,765.90
<b>Totals For Type: Misc. Supplies</b>	<b>93.0</b>	<b>\$ 1,765.90</b>
<b>Treatment No Transport</b>		
BLFD Treatment no transport	5.0	978.55
<b>Totals For Type: Treatment No Transport</b>	<b>5.0</b>	<b>\$ 978.55</b>

RescueNet™ Reporting

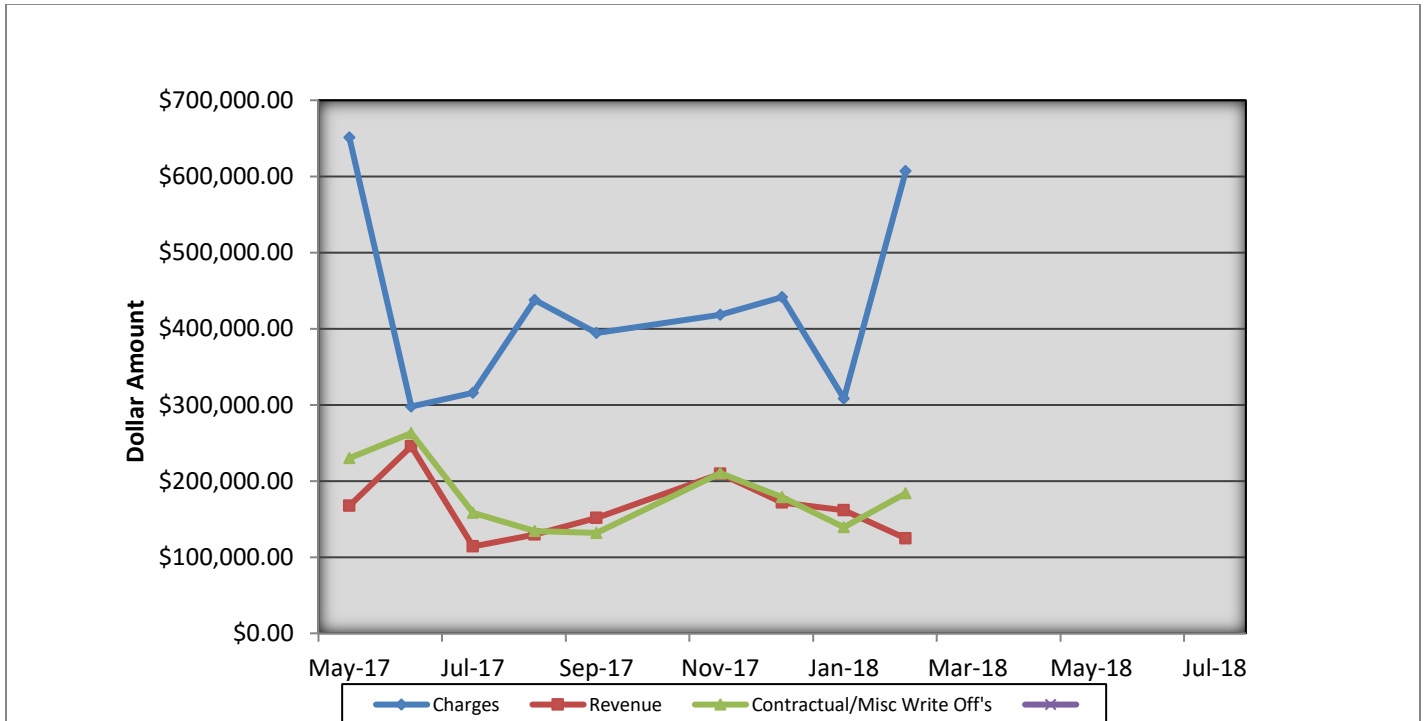
# Charge Type Detail Report (Trip Date)

Period IS 201802 OR -201802; AND Company IS City of Bloomington

	<u>Count</u>	<u>Dollars</u>
<b>City of Bloomington (cont.)</b>		
<b>Totals For Company:</b> City of Bloomington	<b>4830.9</b>	<b>\$607,009.07</b>
<b>Report Totals:</b>	<b>4,830.9</b>	<b>\$ 607,009.07</b>

## Bloomington Fire Dept EMS Billing

Fiscal Year 2017/2018



- Charges represent billings for emergency transports, intercepts, and ambulance standby's.
- Revenue represents the amount of revenue collected for emergency transports, intercepts, and ambulance stand by's.
- Contractual/Miscellaneous Write Off's- are the combination of contractual allowances and miscellaneous write off's. Contractuals are the amounts above what federal and state mandated carriers allow for EMS services. Miscellaneous write off's include Financial Hardships, Bankruptcies, Small Balances, Workman's Compensation, and Incarcerated Patients.
- Bad Debt-Write off's on the accounts forwarded to a third party collection agency for further collection processing \$48,397.26

### Totals Breakdown

Charge total-\$607,009.07

Revenue-\$124,633.89

Contractuals/Miscellaneous Write Offs \$184,036.46

**Bloomington Comparison Report  
February 2018**

	<b>Current Month 02/2018</b>	<b>Previous Year 02/2017</b>	<b>Previous Month 01/2018</b>
<b>Charges</b>			
<b>BLS</b>	495	538	256
<b>ALS</b>	305	224	158
<b>ALS II</b>	1	7	2
<b>Charge Totals</b>	<b>\$607,009.07</b>	<b>\$558,332.15</b>	<b>\$308,397.31</b>
<b>Payments</b>			
<b>Payments</b>	\$124,633.89	\$145,710.44	\$161,565.99
<b>Bad Debt W/O</b>	\$48,397.26	\$29,145.84	\$69,097.33
<b>Cont/Misc W/O</b>	\$184,036.46	\$185,979.58	\$139,410.50



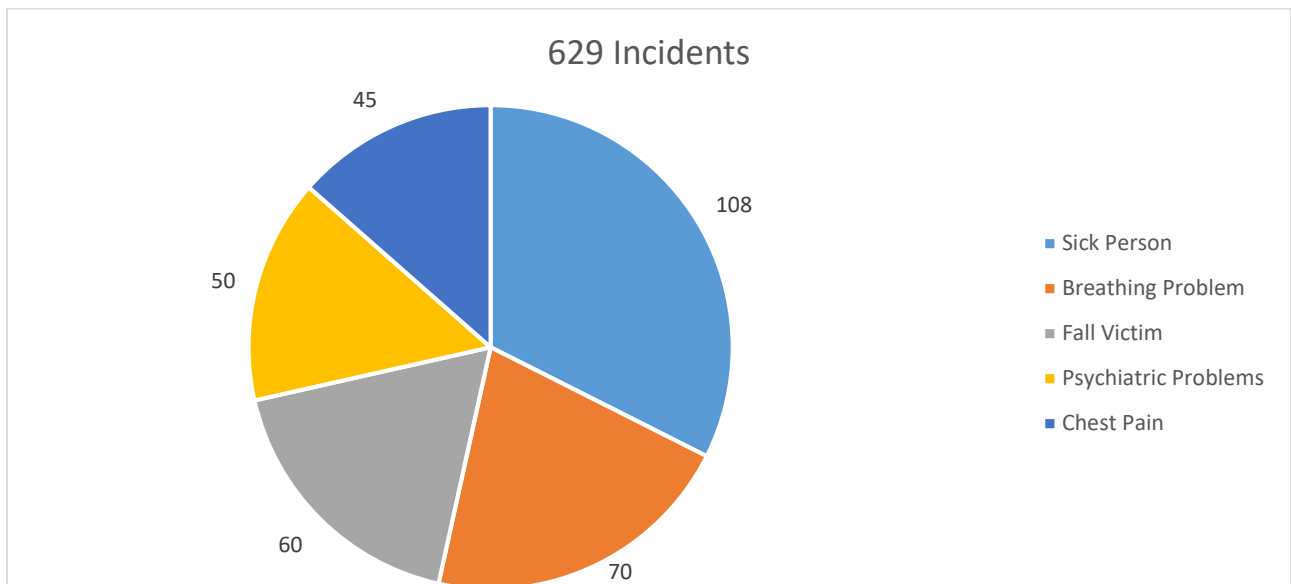
# Bloomington Fire Dept.

## Monthly EMS Response Report

### February 2018



Total EMS Response: 629  
Total Patients: 597  
Total Transported: 418





# Bloomington Fire Dept.

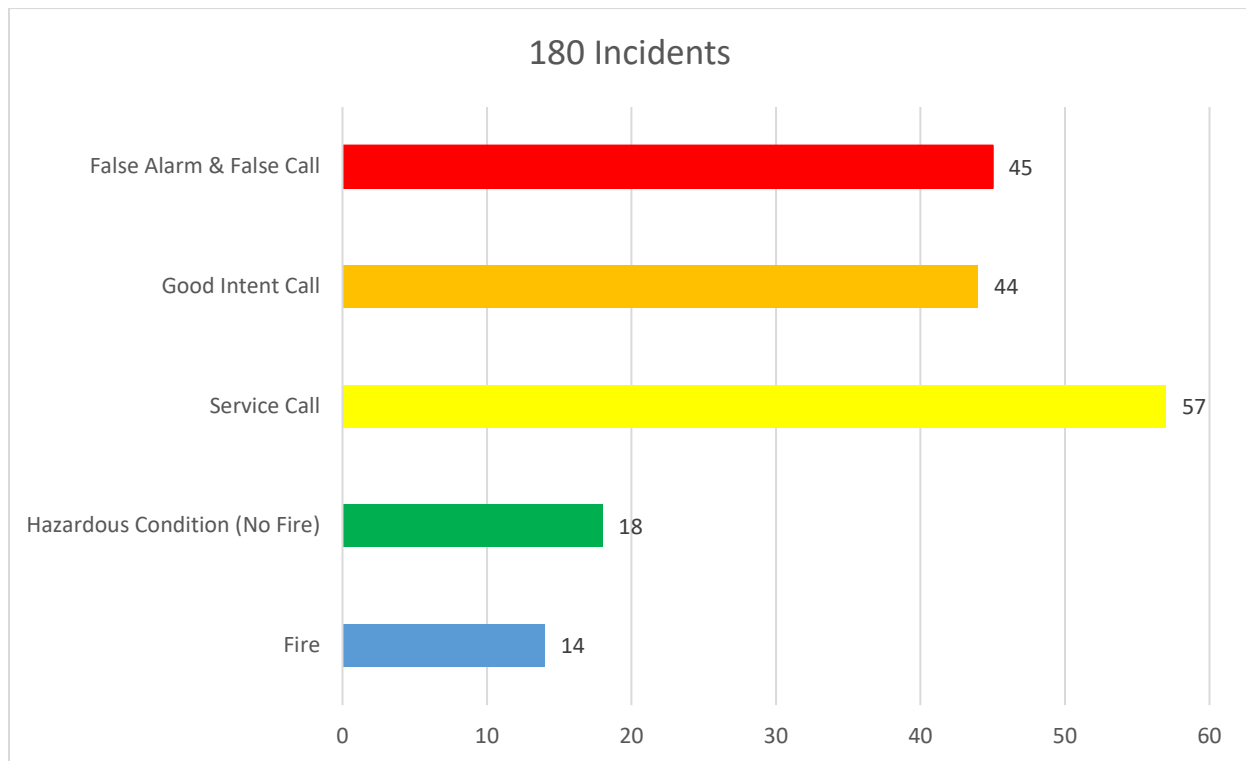
## Monthly Fire Response Report

### February 2018



Total Fire Response:	180
Total Structure Fires:	8
Total Estimated Dollar Loss (Property and Contents):	\$681,200

#### Top 5 Fire Responses

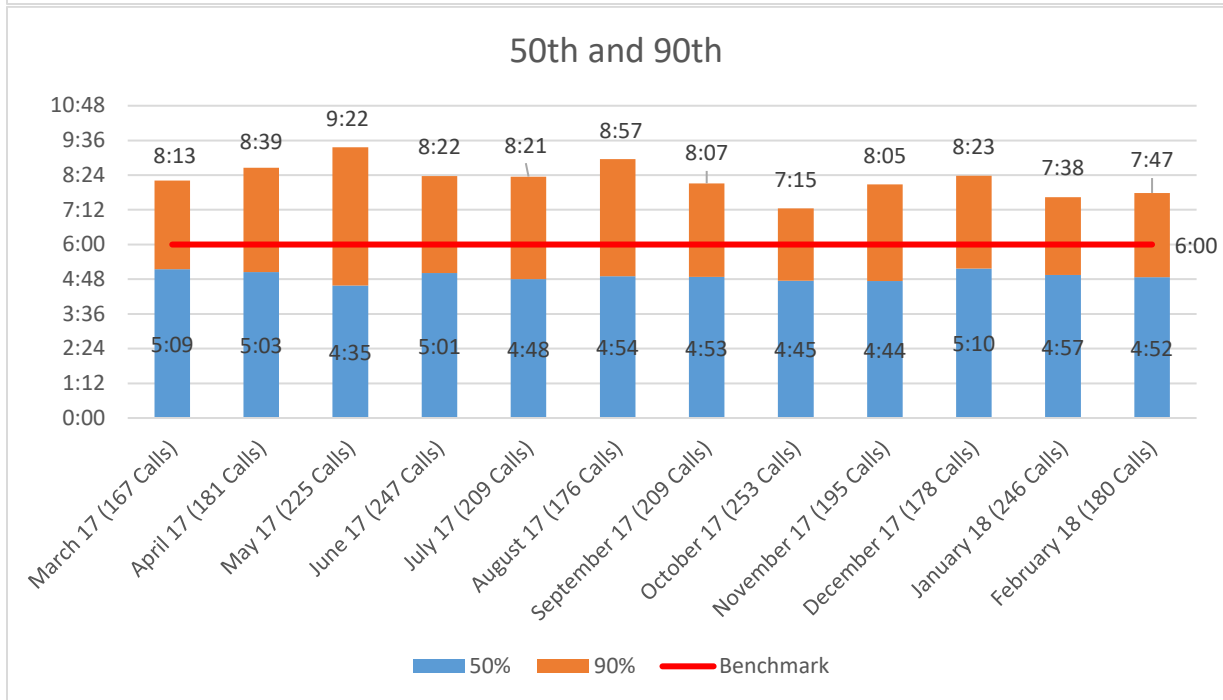
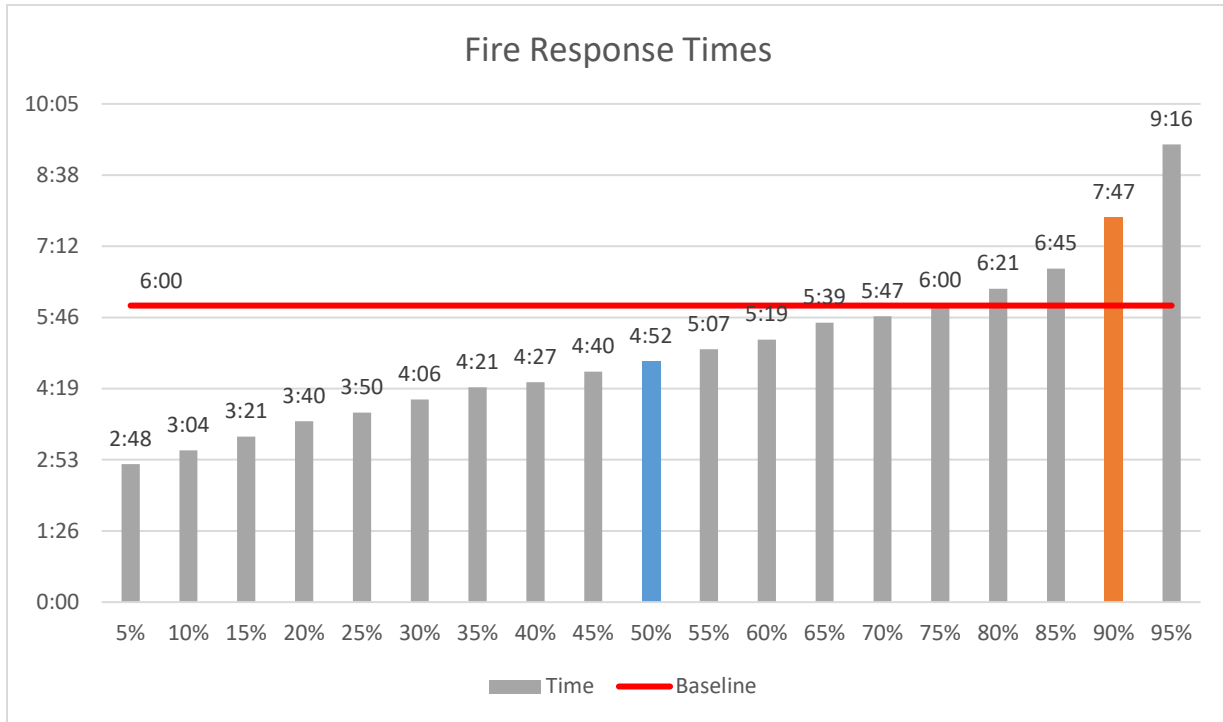




# Bloomington Fire Dept.

## Fire Response Times

February 2018





# Bloomington Fire Dept.

## EMS Response Times

February 2018

