

Charge Type Detail Report (Trip Date)

Period IS 201801 OR -201801; AND Company IS City of Bloomington

	<u>Count</u>	<u>Dollars</u>
City of Bloomington		
ALS Emergency		
BLFD ALS Emergency Base Rate	158.0	120,091.06
Totals For Type: ALS Emergency	158.0	\$ 120,091.06
ALS Emergency II		
BLFD ALS II Emergency Base Rat	2.0	1,705.08
Totals For Type: ALS Emergency II	2.0	\$ 1,705.08
BLS Emergency		
BLFD BLS Emergency Base Rate	256.0	162,145.28
Totals For Type: BLS Emergency	256.0	\$ 162,145.28
Mileage		
BLFD Mileage	1,201.1	18,256.72
Totals For Type: Mileage	1,201.1	\$ 18,256.72
Misc Fee		
Credit balance applied	1.0	0.01
Interest	21,059.0	210.59
Totals For Type: Misc Fee	21,060.0	\$ 210.60
Misc. Services		
BLFD ALS Intercept Fee	11.0	3,241.15
BLFD Standby EMS Chase Commerc	4.0	968.00
BLFD Standby Medic College Spo	1.0	220.00
BLFD Standby Medic H.S. Sport	1.0	220.00
Totals For Type: Misc. Services	17.0	\$ 4,649.15
Misc. Supplies		
BLFD Oxygen	52.0	959.40
Totals For Type: Misc. Supplies	52.0	\$ 959.40
Treatment No Transport		
BLFD Treatment no transport	2.0	380.02

RescueNet™ Reporting

Charge Type Detail Report (Trip Date)

Period IS 201801 OR -201801; AND Company IS City of Bloomington

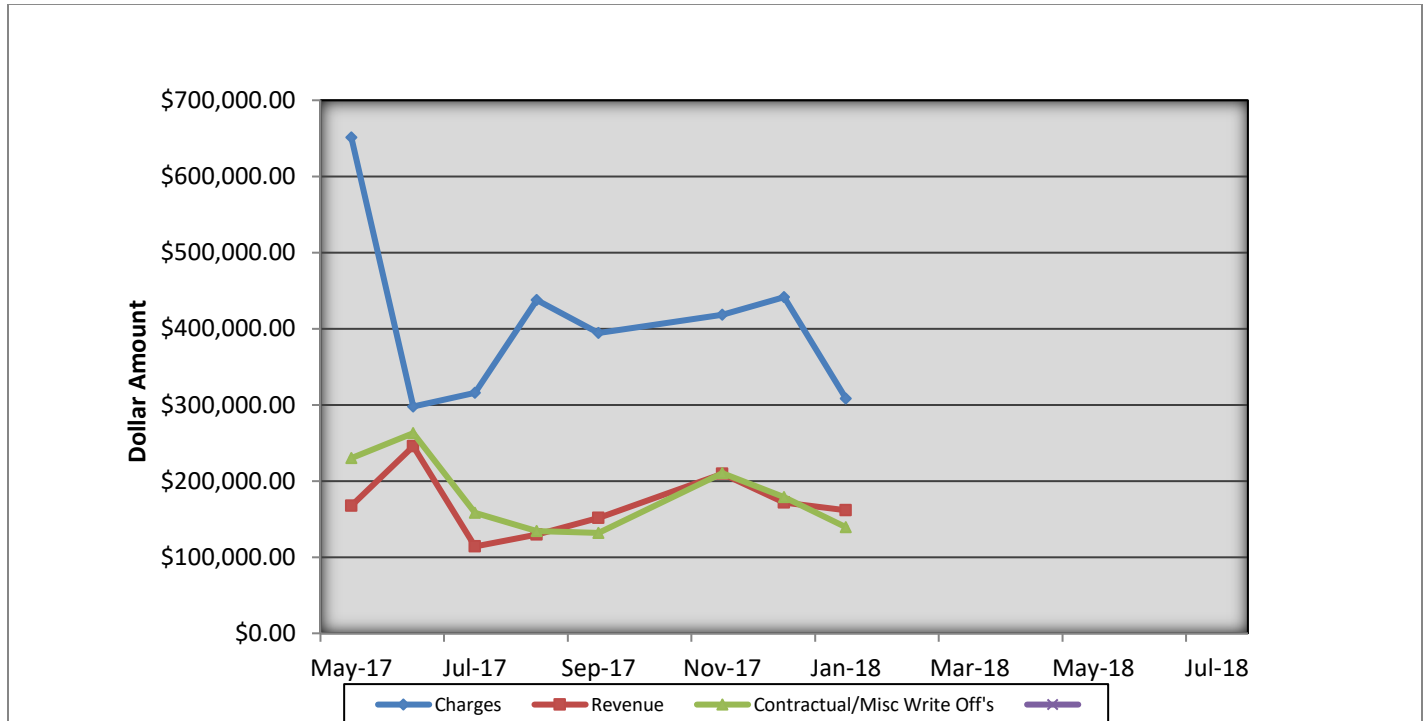
	<u>Count</u>	<u>Dollars</u>
City of Bloomington (cont.)		
Totals For Type: Treatment No Transport	2.0	\$ 380.02
Totals For Company: City of Bloomington	22748.1	\$308,397.31
Report Totals:	22,748.1	\$ 308,397.31

**Bloomington Comparison Report
January 2018**

	Current Month 01/2018	Previous Year 01/2017	Previous Month 12/2017
Charges			
BLS	256	254	347
ALS	158	141	248
ALS II	2	0	2
Charge Totals	\$308,397.31	\$278,723.22	\$441,479.75
Payments			
Payments	\$161,565.99	\$114,730.22	\$171,784.86
Bad Debt W/O	\$69,097.33	\$22,316.00	\$17,769.55
Cont/Misc W/O	\$139,410.50	\$128,076.79	\$178,866.89

Bloomington Fire Dept EMS Billing

Fiscal Year 2017/2018



- Charges represent billings for emergency transports, intercepts, and ambulance standby's.
- Revenue represents the amount of revenue collected for emergency transports, intercepts, and ambulance stand by's.
- Contractual/Miscellaneous Write Off's- are the combination of contractual allowances and miscellaneous write off's. Contractuals are the amounts above what federal and state mandated carriers allow for EMS services. Miscellaneous write off's include Financial Hardships, Bankruptcies, Small Balances, Workman's Compensation, and Incarcerated Patients.
- Bad Debt-Write off's on the accounts forwarded to a third party collection agency for further collection processing \$69,097.33

Totals Breakdown

Charge total-\$308,397.31

Revenue-\$161,565.99

Contractuals/Miscellaneous Write Offs \$139,410.50



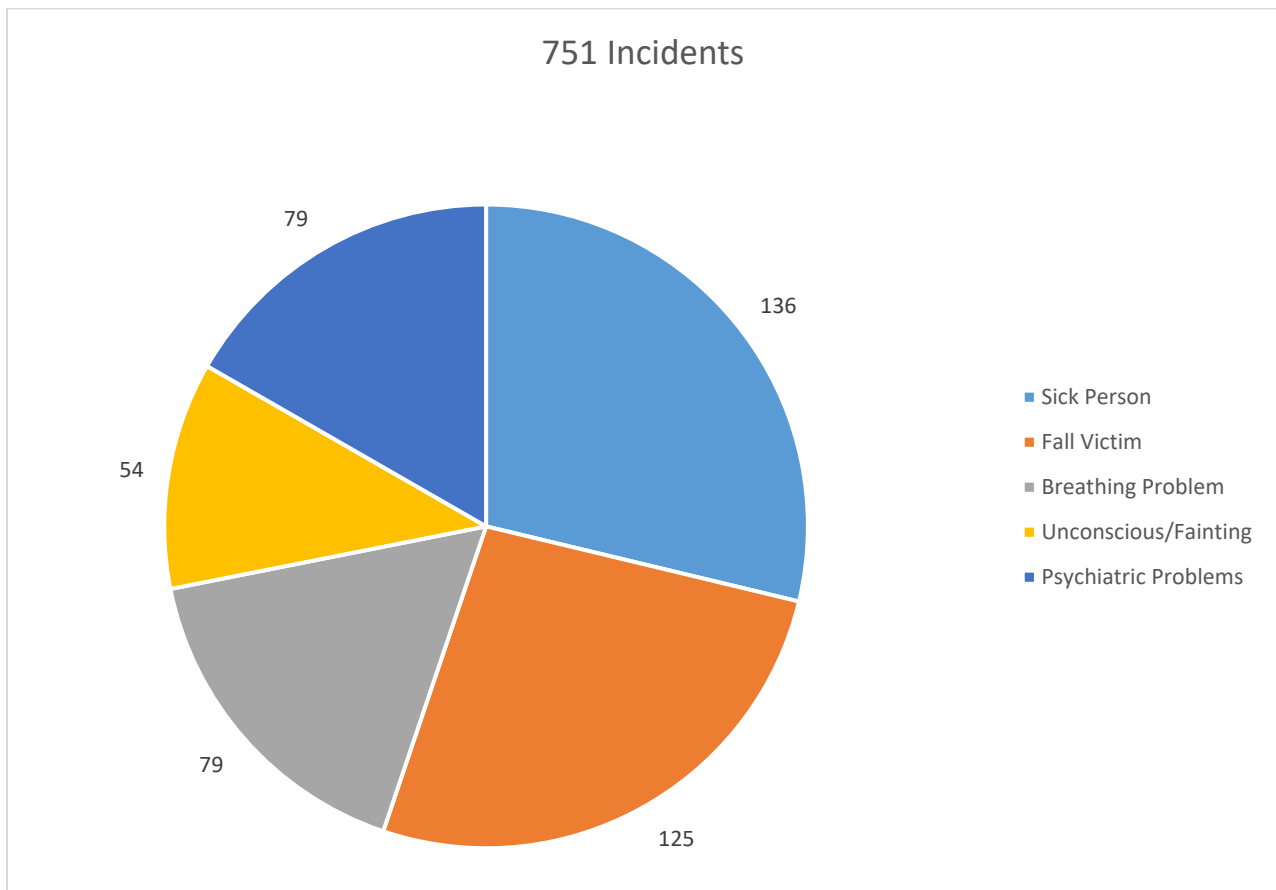
Bloomington Fire Dept.

Monthly EMS Response Report

January 2018



Total EMS Response: 751
Total Patients: 711
Total Transported: 491





Bloomington Fire Dept.

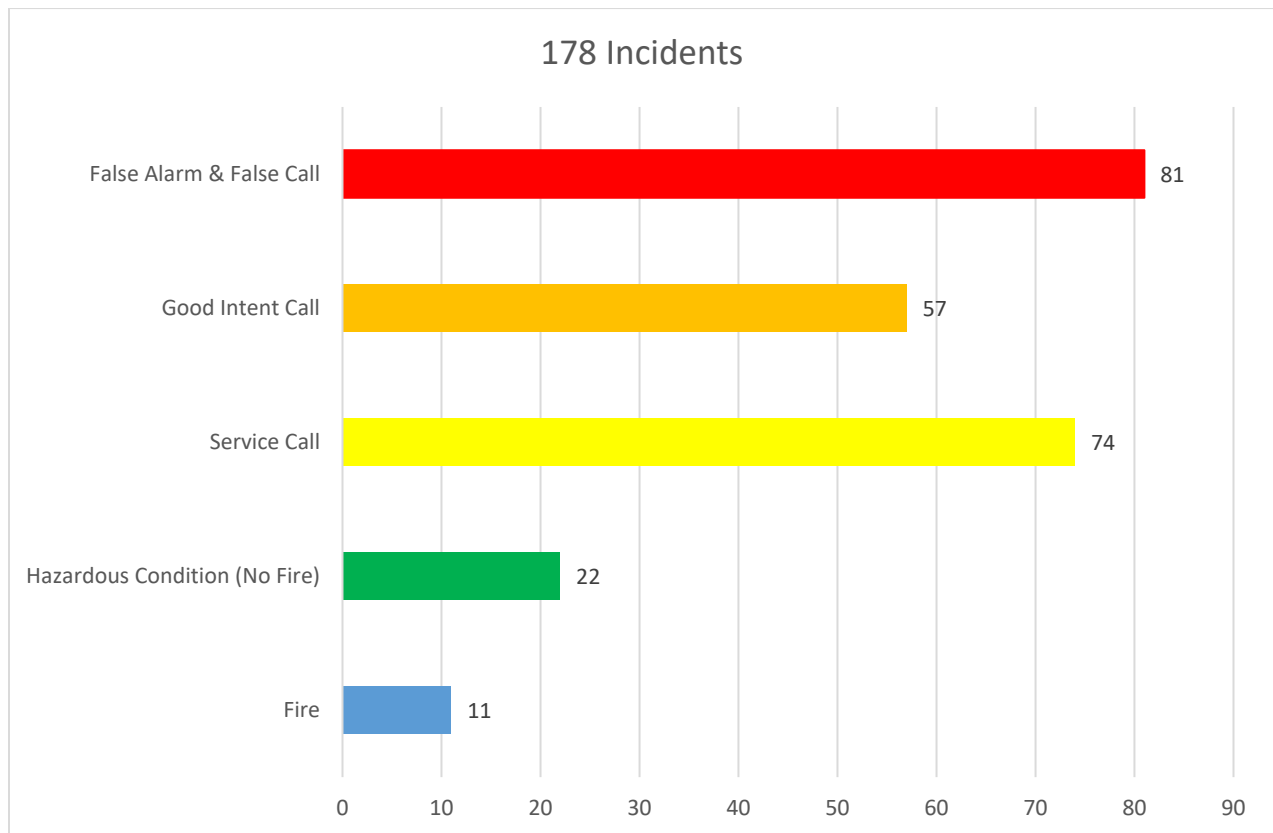
Monthly Fire Response Report

January 2018



Total Fire Response:	246
Total Structure Fires:	5
Total Estimated Dollar Loss (Property and Contents):	\$52,850

Top 5 Fire Responses

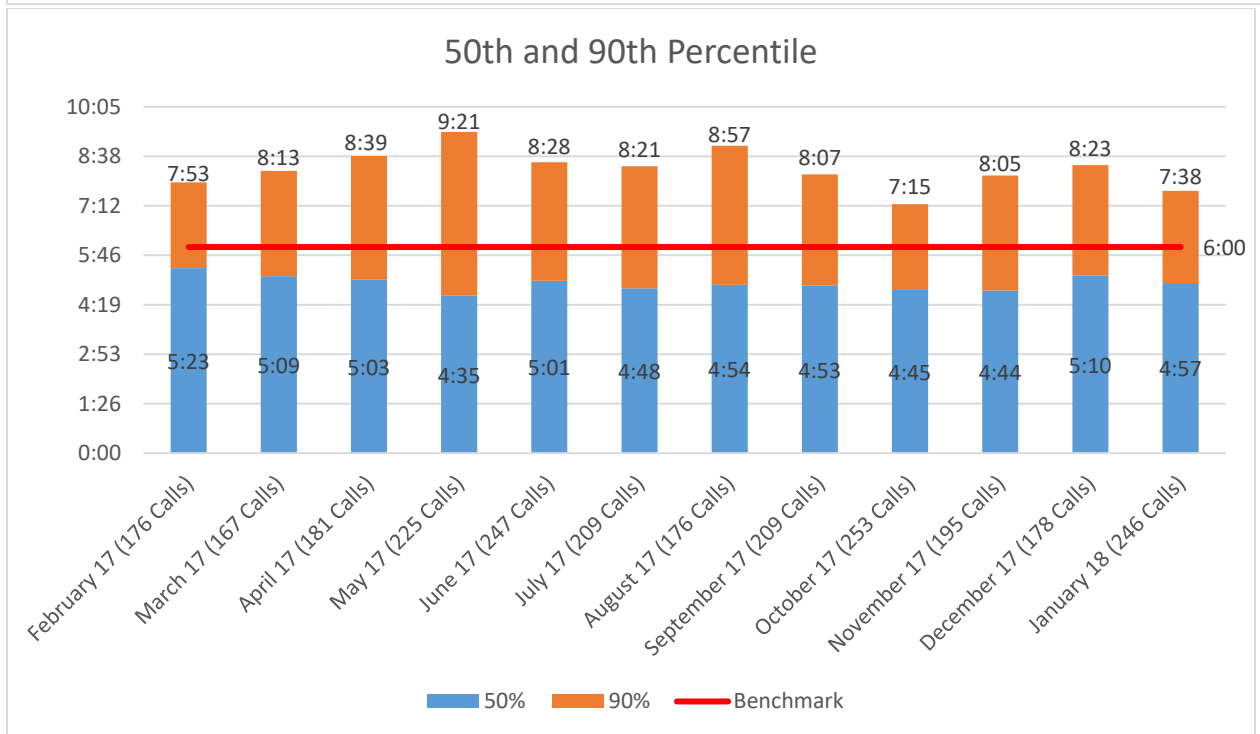
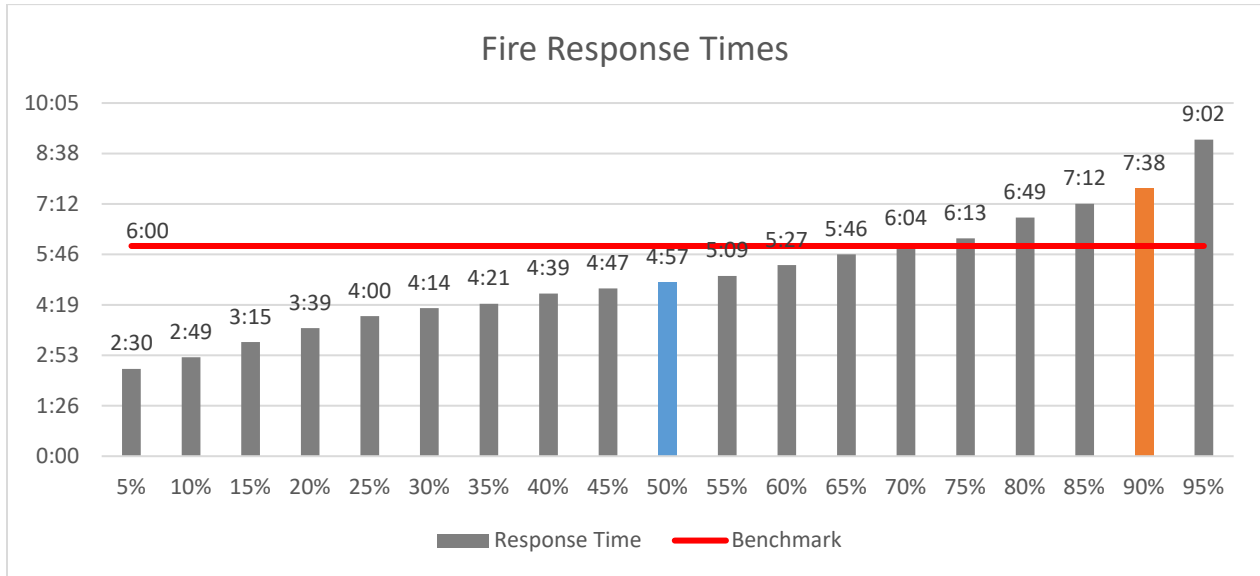




Bloomington Fire Dept.

Fire Response Times

January 2018





Bloomington Fire Dept.

EMS Response Times

January 2018

