

Charge Type Detail Report (Trip Date)

Period IS 201710 OR -201710; AND Company IS City of Bloomington

	<u>Count</u>	<u>Dollars</u>
City of Bloomington		
ALS Emergency		
BLFD ALS Emergency Base Rate	226.0	171,775.82
Totals For Type: ALS Emergency	226.0	\$ 171,775.82
ALS Emergency II		
BLFD ALS II Emergency Base Rat	7.0	5,967.78
Totals For Type: ALS Emergency II	7.0	\$ 5,967.78
BLS Emergency		
BLFD BLS Emergency Base Rate	410.0	259,685.80
Totals For Type: BLS Emergency	410.0	\$ 259,685.80
Mileage		
BLFD Mileage	1,767.0	26,858.40
Totals For Type: Mileage	1,767.0	\$ 26,858.40
Misc Fee		
Interest	20,249.0	202.49
Totals For Type: Misc Fee	20,249.0	\$ 202.49
Misc. Services		
BLFD ALS Intercept Fee	9.0	2,651.85
BLFD ALSII Intercept Fee	-1.0	-426.47
BLFD Returned check fee	1.0	25.00
BLFD Standby Medic H.S. Sport	9.0	1,980.00
BLFD Stby Medic HS Sprt 15 min	1.0	30.25
Totals For Type: Misc. Services	19.0	\$ 4,260.63
Misc. Supplies		
BLFD Oxygen	79.0	1,457.55
Totals For Type: Misc. Supplies	79.0	\$ 1,457.55
Treatment No Transport		
BLFD Treatment no transport	4.0	760.04

RescueNet™ Reporting

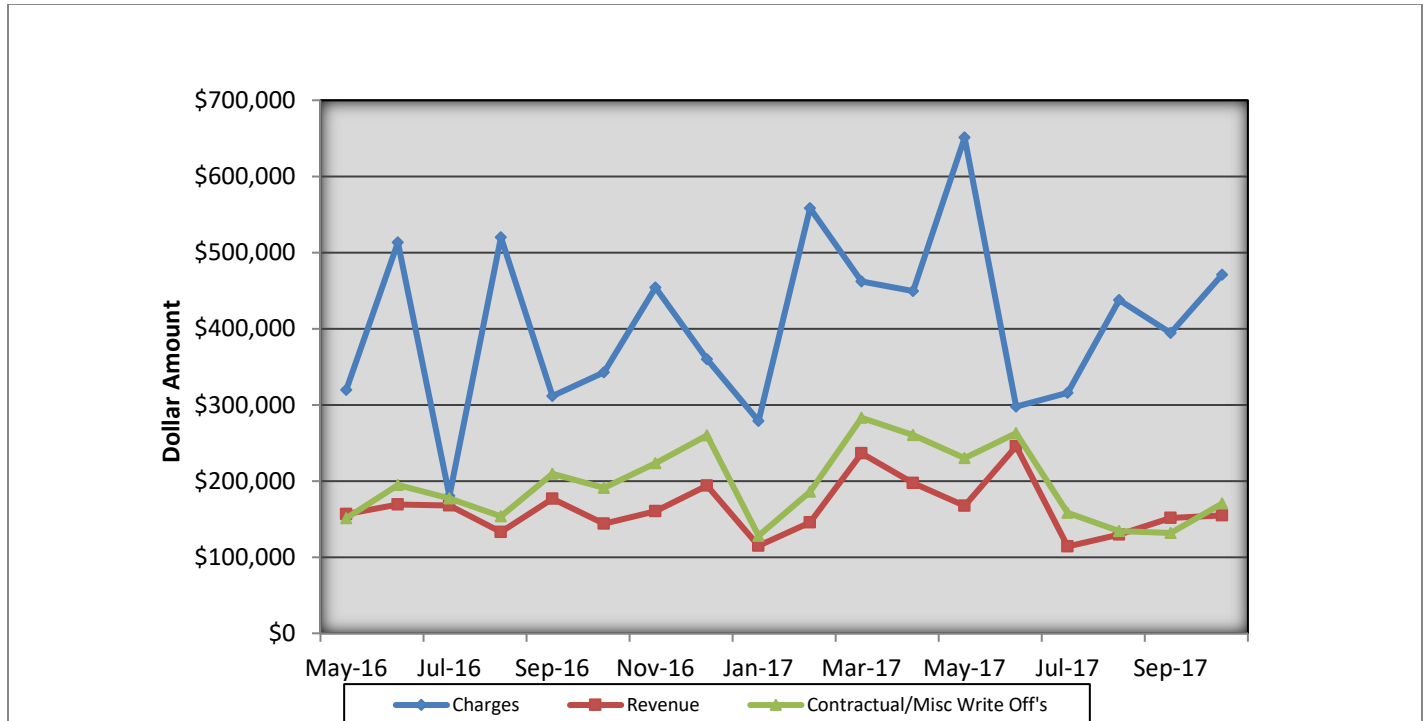
Charge Type Detail Report (Trip Date)

Period IS 201710 OR -201710; AND Company IS City of Bloomington

	<u>Count</u>	<u>Dollars</u>
City of Bloomington (cont.)		
Totals For Type: Treatment No Transport	4.0	\$ 760.04
Totals For Company: City of Bloomington	22761.0	\$470,968.51
Report Totals:	22,761.0	\$ 470,968.51

Bloomington Fire Dept EMS Billing

Fiscal Year 2016/2017



- Charges represent billings for emergency transports, intercepts, and ambulance standby's.
- Revenue represents the amount of revenue collected for emergency transports, intercepts, and ambulance stand by's.
- Contractual/Miscellaneous Write Off's- are the combination of contractual allowances and miscellaneous write off's. Contractuals are the amounts above what federal and state mandated carriers allow for EMS services. Miscellaneous write off's include Financial Hardships, Bankruptcies, Small Balances, Workman's Compensation, and Incarcerated Patients.
- Bad Debt-Write off's on the accounts forwarded to a third party collection agency for further collection processing \$35,224.47

Totals Breakdown

Charge total-\$470,968.51

Revenue-\$154,721.73

Contractuals/Miscellaneous Write Offs \$170,265.28



Bloomington Fire Dept.

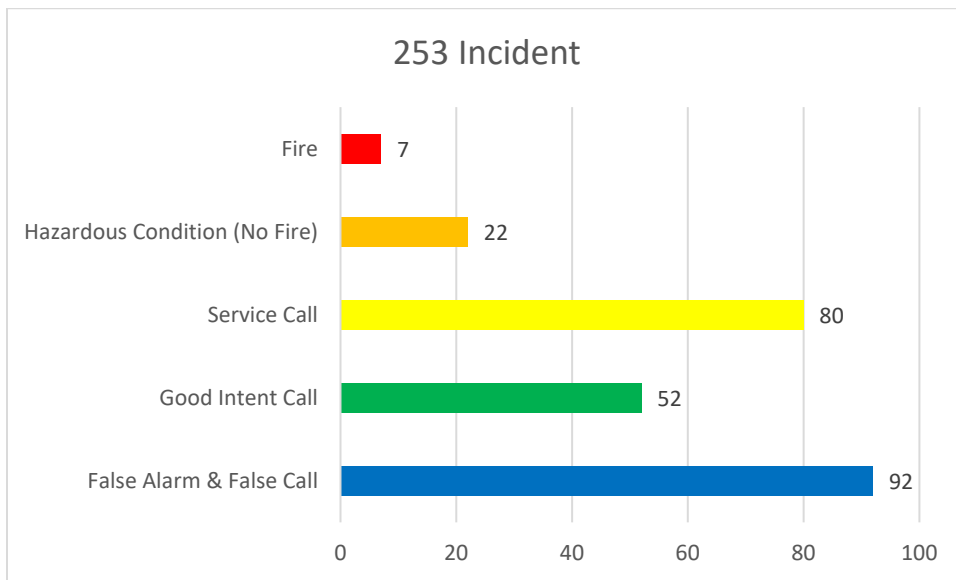
Monthly Fire Response Report

October 2017



Total Fire Response:	253
Total Structure Fires:	2
Total Estimated Dollar Loss (Property and Contents):	\$21,350

Top 5 Fire Responses





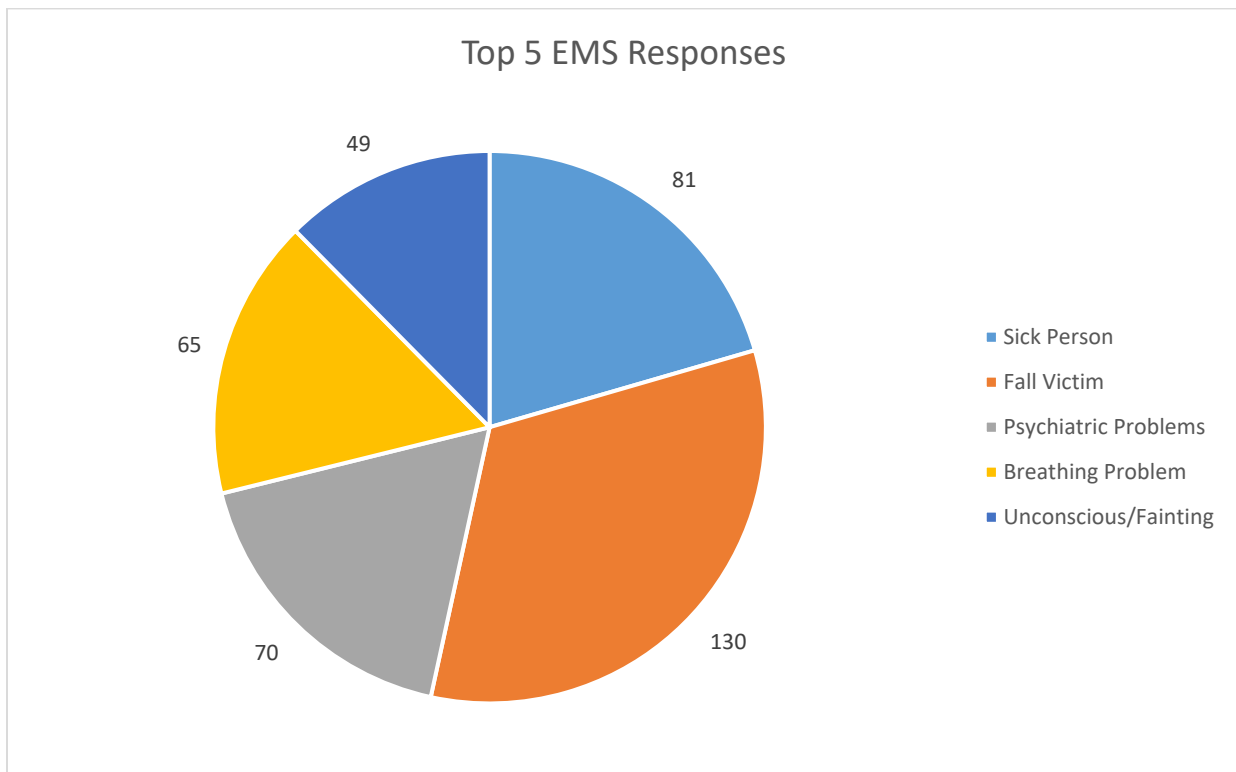
Bloomington Fire Dept.

Monthly EMS Response Report

October 2017



Total EMS Response: 654
Total Patients: 614
Total Transported: 371

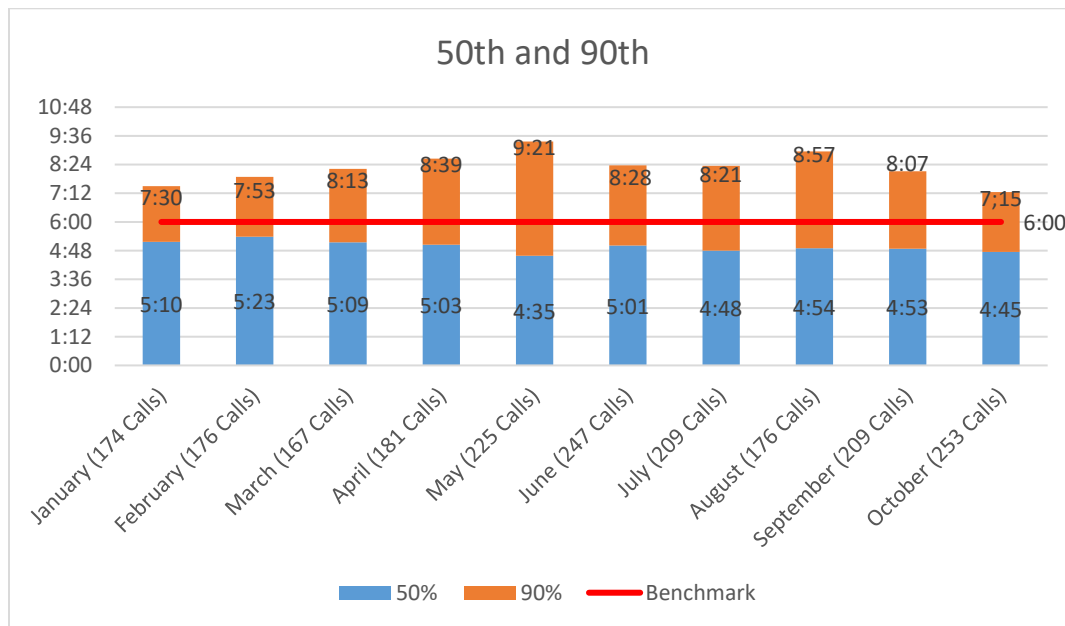
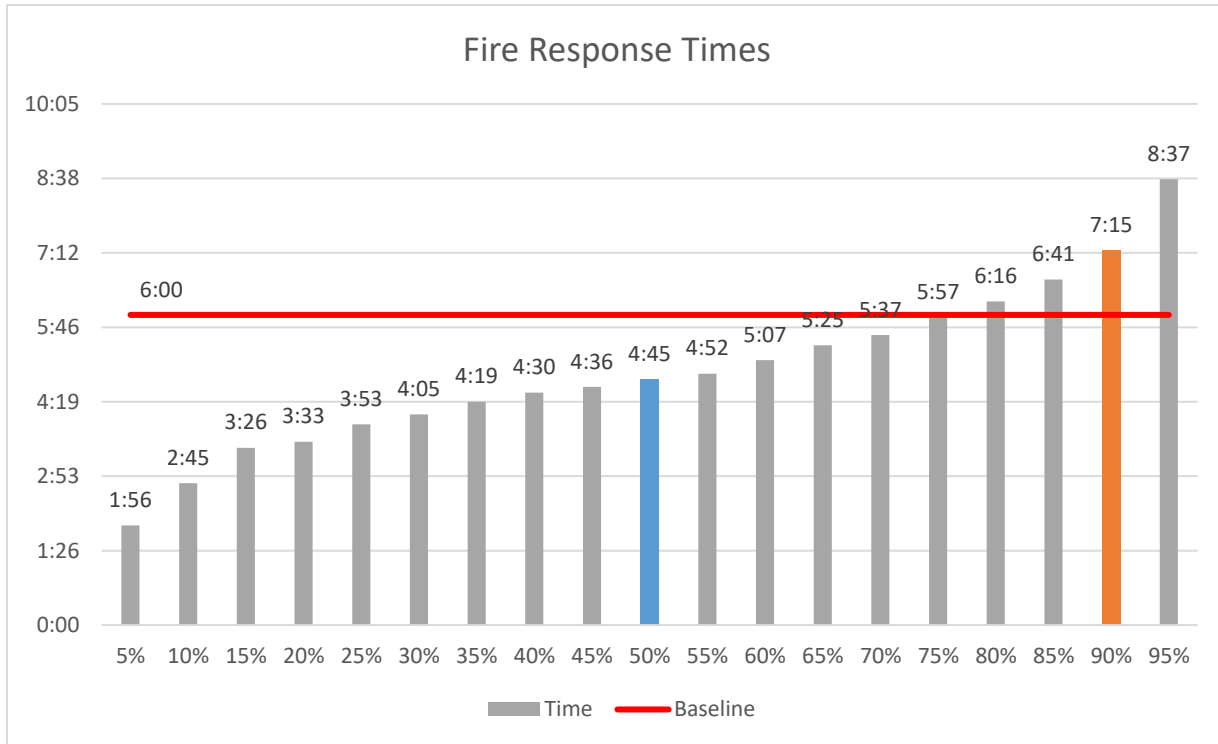




Bloomington Fire Dept.

Fire Response Times

October 2017

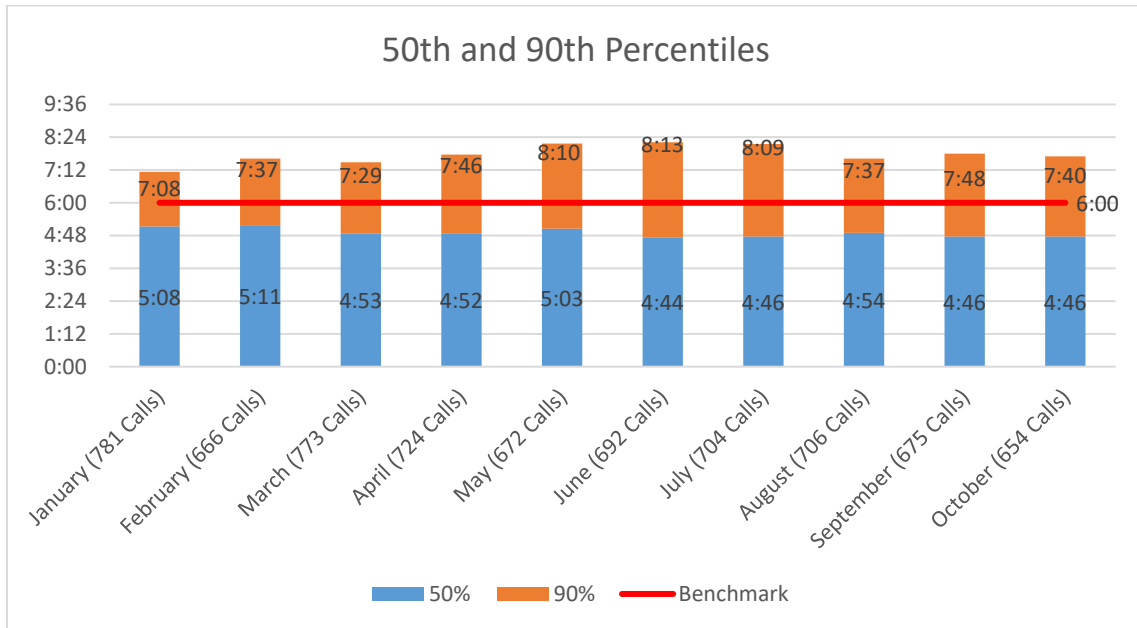
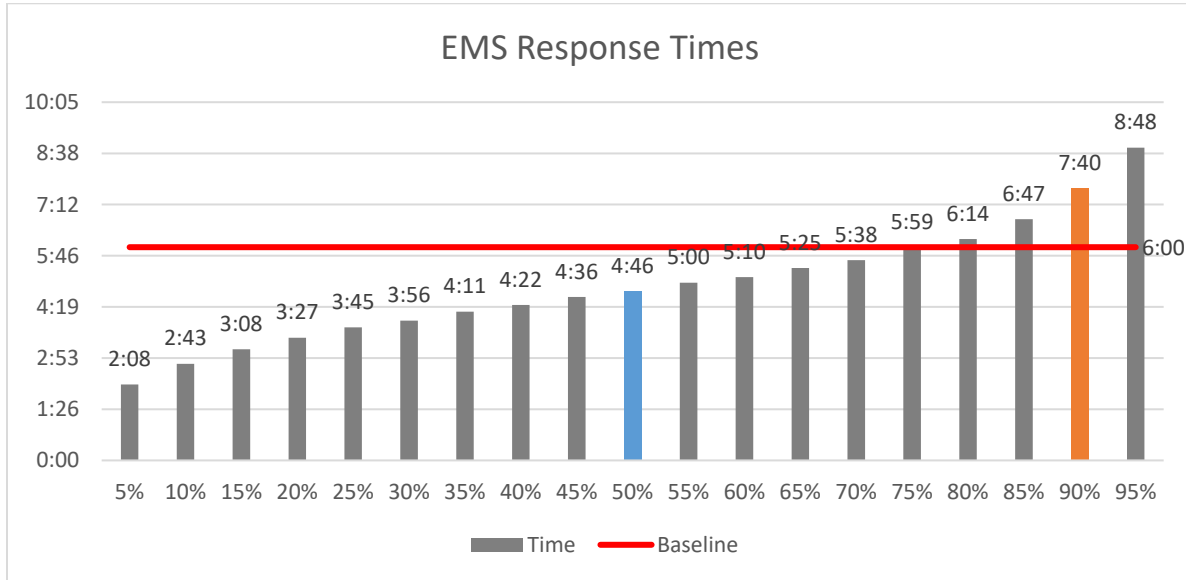




Bloomington Fire Dept.

EMS Response Times

October 2017



**Bloomington Comparison Report
October 2017**

	Current Month 10/2017	Previous Year 10/2016	Previous Month 08/2017
Charges			
BLS	410	279	324
ALS	226	183	203
ALS II	7	6	4
Charge Totals	\$470,968.51	\$342,739.92	\$394,497.44
Payments			
Payments	\$154,721.73	\$143,979.77	\$151,326.82
Bad Debt W/O	\$35,224.47	\$15,925.48	\$40,940.24
Cont/Misc W/O	\$170,265.28	\$191,071.48	\$131,867.61