

Charge Type Detail Report (Trip Date)

Period IS 201709 OR -201709; AND Company IS City of Bloomington

	<u>Count</u>	<u>Dollars</u>
City of Bloomington		
ALS Emergency		
BLFD ALS Emergency Base Rate	203.0	154,294.21
Totals For Type: ALS Emergency	203.0	\$ 154,294.21
ALS Emergency II		
BLFD ALS II Emergency Base Rat	4.0	3,410.16
Totals For Type: ALS Emergency II	4.0	\$ 3,410.16
BLS Emergency		
BLFD BLS Emergency Base Rate	324.0	205,215.12
Totals For Type: BLS Emergency	324.0	\$ 205,215.12
Mileage		
BLFD Mileage	1,539.1	23,394.32
Totals For Type: Mileage	1,539.1	\$ 23,394.32
Misc Fee		
Credit balance applied	6.0	0.06
Interest	11,075.0	110.75
Totals For Type: Misc Fee	11,081.0	\$ 110.81
Misc. Services		
BLFD ALS Intercept Fee	10.0	2,946.50
BLFD Standby Medic College Spo	3.0	660.00
BLFD Standby Medic H.S. Sport	8.0	1,760.00
BLFD Standby Medic Non Profit	1.0	242.00
BLFD Stby Medic HS Sprt 15 min	4.0	121.00
BLFD Stby Medic N/P 15 min	3.0	90.75
Totals For Type: Misc. Services	29.0	\$ 5,820.25
Misc. Supplies		
BLFD Oxygen	50.0	922.50
Totals For Type: Misc. Supplies	50.0	\$ 922.50

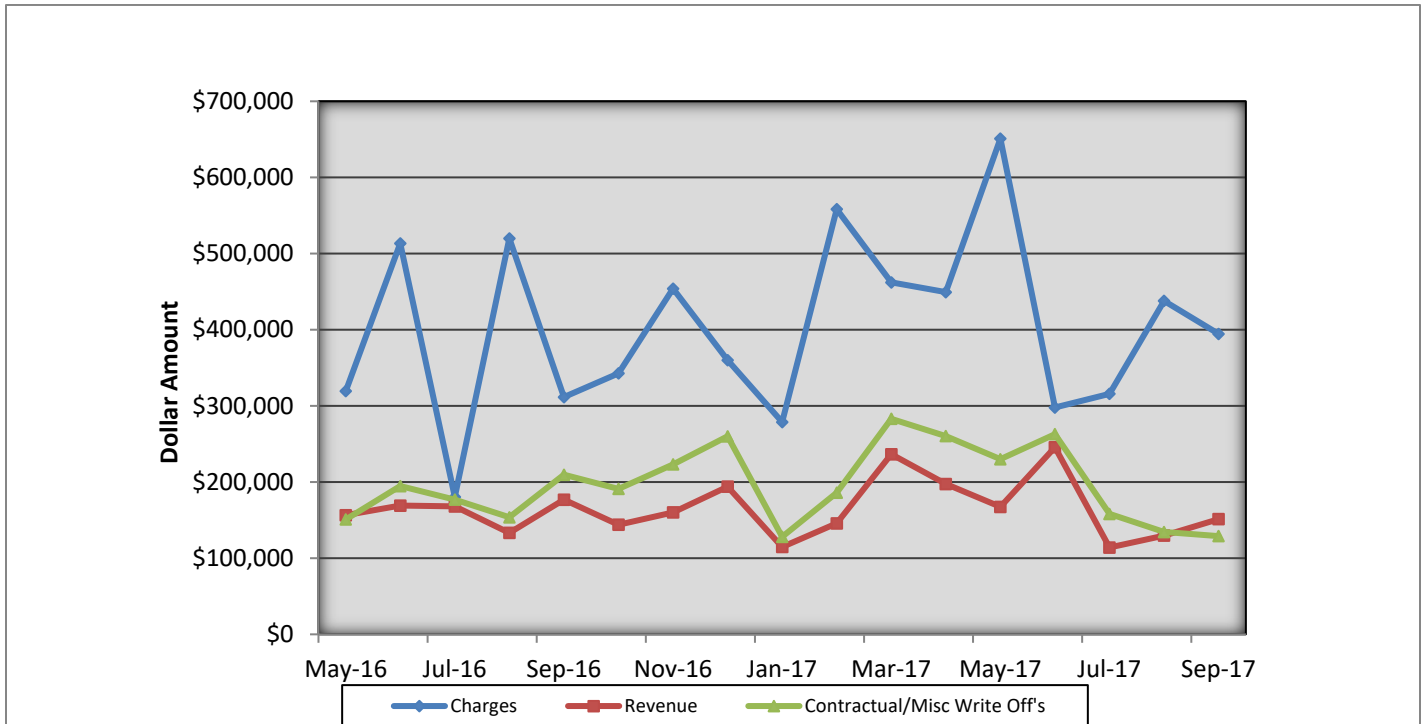
Charge Type Detail Report (Trip Date)

Period IS 201709 OR -201709; AND Company IS City of Bloomington

	<u>Count</u>	<u>Dollars</u>
City of Bloomington (cont.)		
Treatment No Transport		
BLFD Treatment no transport	7.0	1,330.07
Totals For Type: Treatment No Transport	7.0	\$ 1,330.07
<hr/>		
Totals For Company: City of Bloomington	13237.1	\$394,497.44
Report Totals:	13,237.1	\$ 394,497.44

Bloomington Fire Dept EMS Billing

Fiscal Year 2016/2017



- Charges represent billings for emergency transports, intercepts, and ambulance standby's.
- Revenue represents the amount of revenue collected for emergency transports, intercepts, and ambulance stand by's.
- Contractual/Miscellaneous Write Off's- are the combination of contractual allowances and miscellaneous write off's. Contractuals are the amounts above what federal and state mandated carriers allow for EMS services. Miscellaneous write off's include Financial Hardships, Bankruptcies, Small Balances, Workman's Compensation, and Incarcerated Patients.
- Bad Debt-Write off's on the accounts forwarded to a third party collection agency for further collection processing \$40,940.24

Totals Breakdown

Charge total-\$394,497.44

Revenue-\$151,326.82

Contractuals/Miscellaneous Write Offs \$131,867.61

**Bloomington Comparison Report
September 2017**

	Current Month 09/2017	Previous Year 09/2016	Previous Month 08/2017
Charges			
BLS	324	308	364
ALS	203	132	224
ALS II	4	2	7
Charge Totals	\$394,497.44	\$311,565.41	\$437,866.25
Payments			
Payments	\$151,326.82	\$176,863.19	\$129,690.21
Bad Debt W/O	\$40,940.24	\$44,746.46	\$57,478.32
Cont/Misc W/O	\$131,867.61	\$209,641.72	\$134,395.65



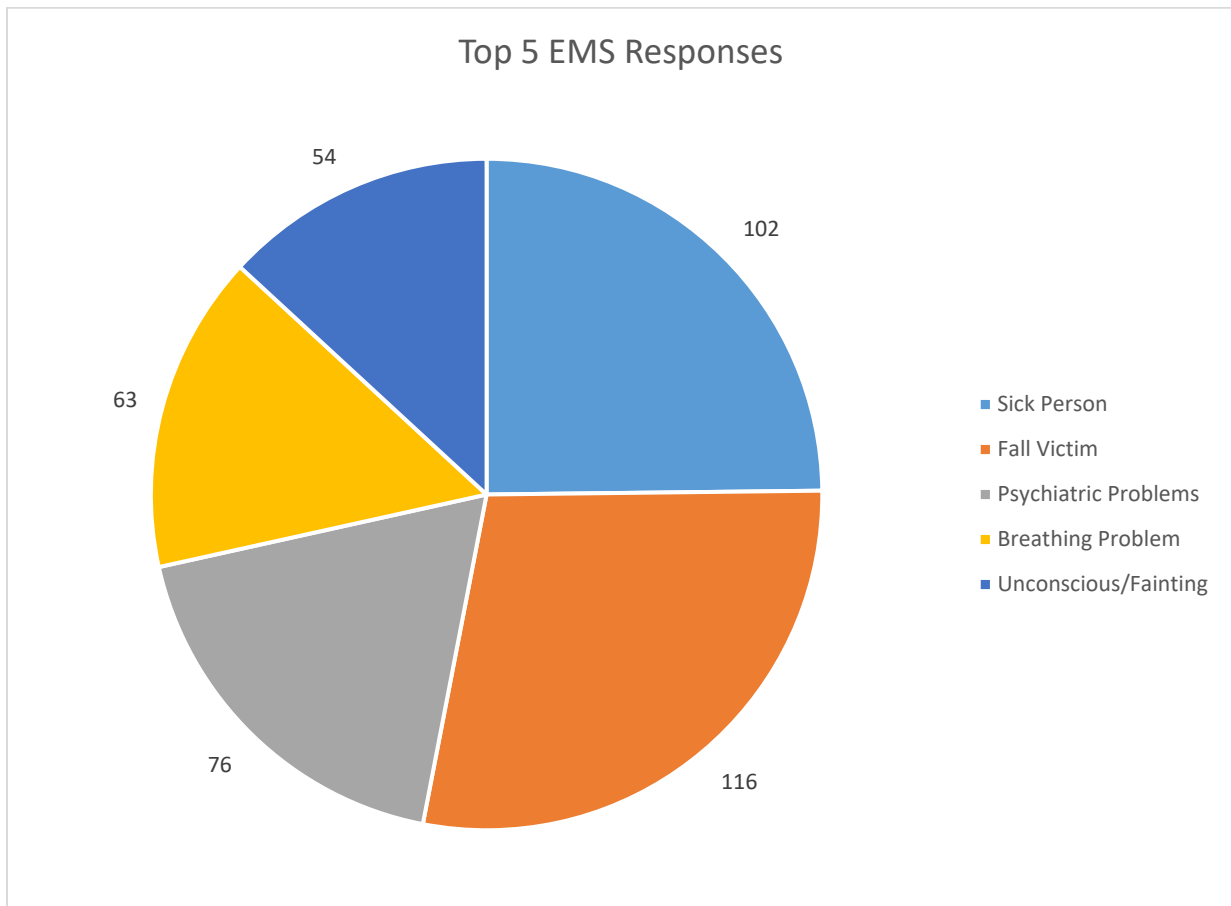
Bloomington Fire Dept.

Monthly EMS Response Report

September 2017



Total EMS Response: 675
Total Patients: 616
Total Transported: 378





Bloomington Fire Dept.

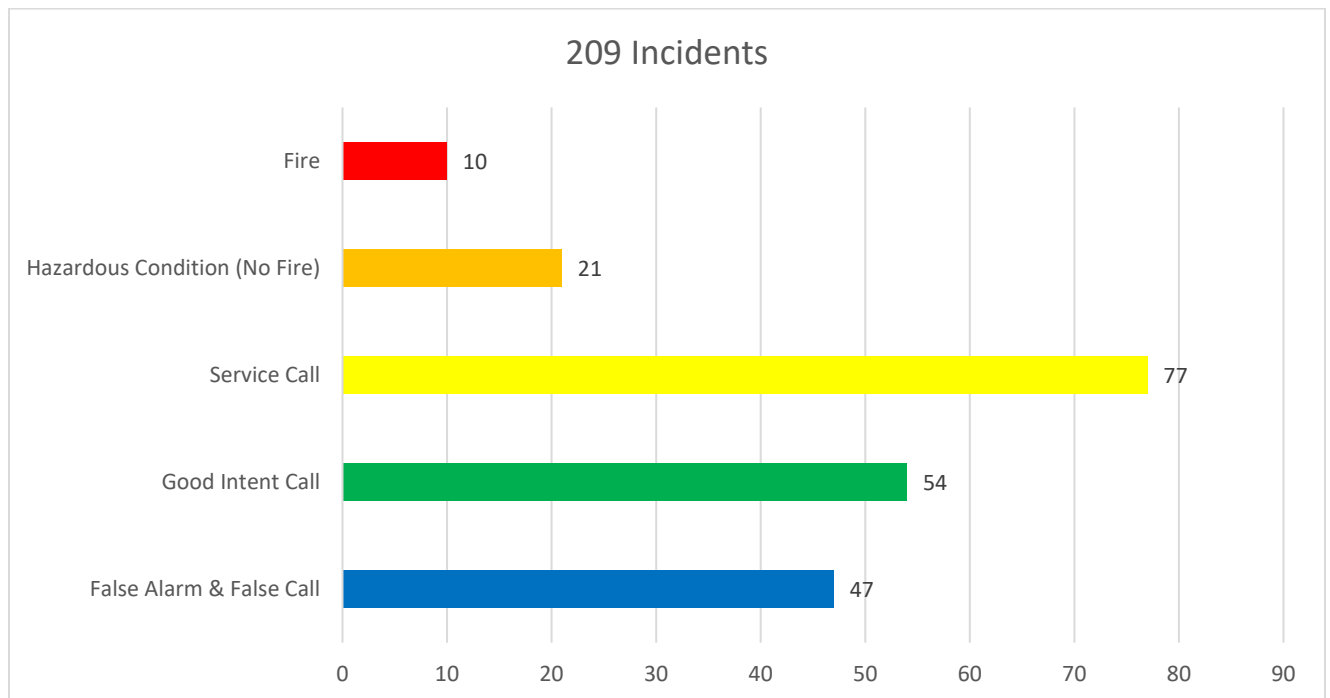
Monthly Fire Response Report

September 2017



Total Fire Response:	209
Total Structure Fires:	2
Total Estimated Dollar Loss (Property and Contents):	\$91,400

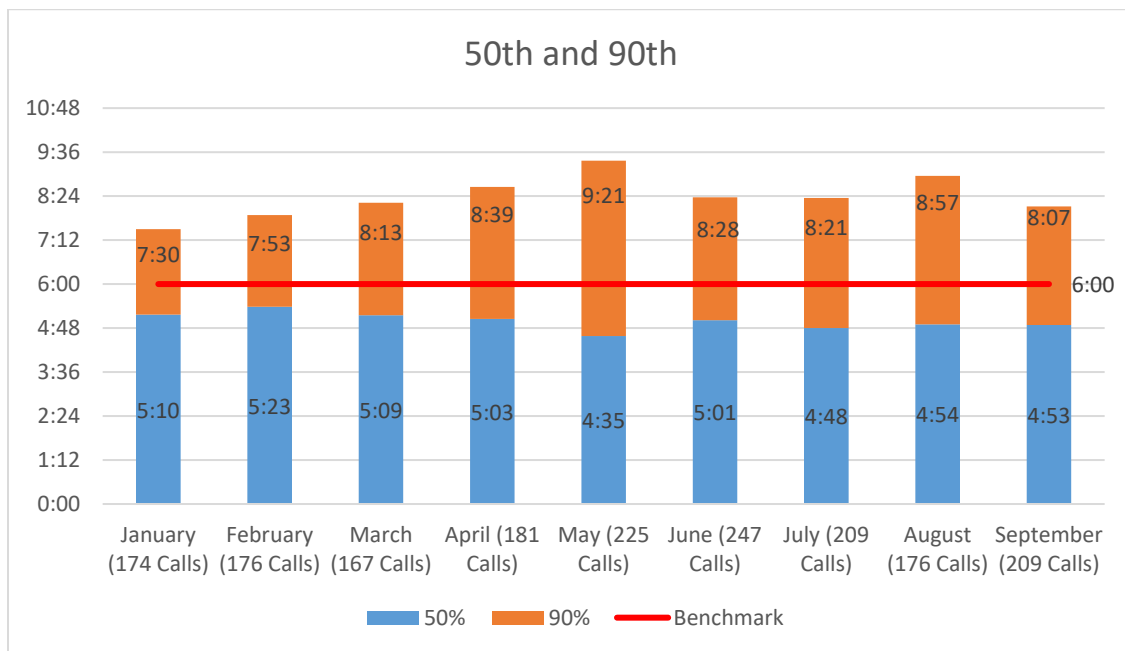
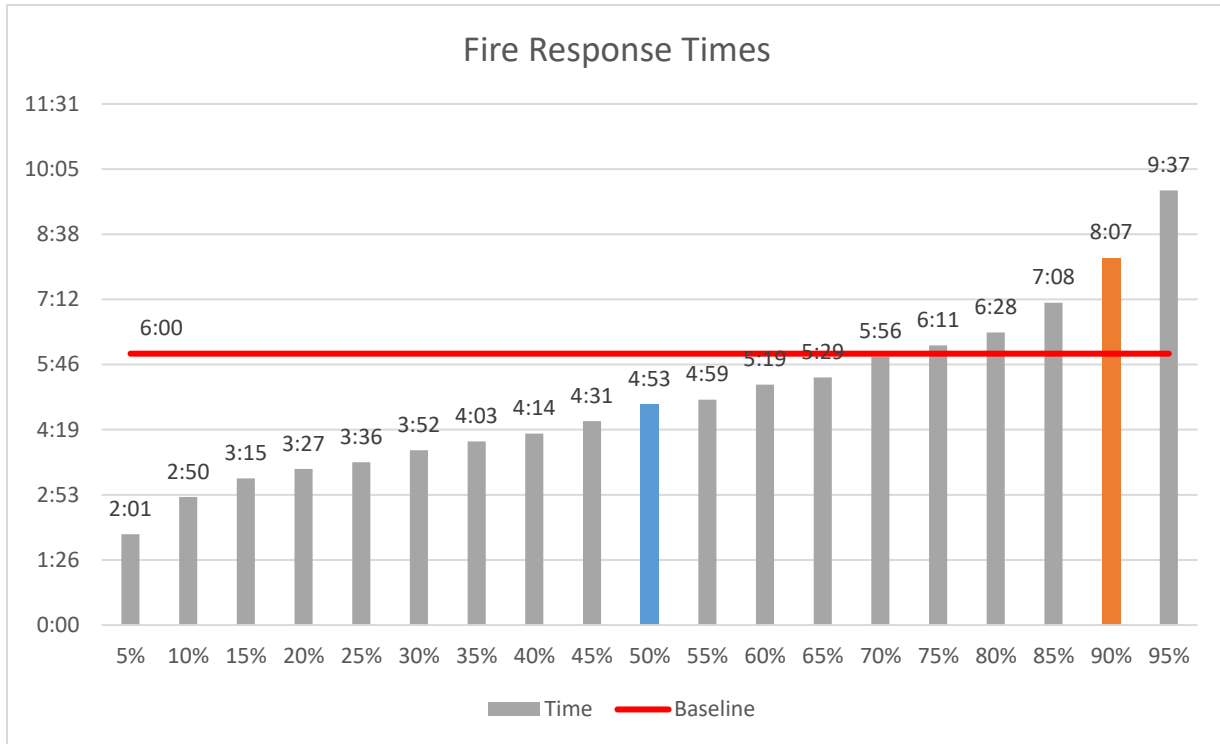
Top 5 Fire Responses





Bloomington Fire Dept.

Fire Response Times September 2017





Bloomington Fire Dept.

EMS Response Times September 2017

