

Charge Type Detail Report (Trip Date)

Period IS 201708 OR -201708; AND Company IS City of Bloomington

	<u>Count</u>	<u>Dollars</u>
City of Bloomington		
ALS Emergency		
BLFD ALS Emergency Base Rate	224.0	170,255.68
Totals For Type: ALS Emergency	224.0	\$ 170,255.68
ALS Emergency II		
BLFD ALS II Emergency Base Rat	7.0	5,967.78
Totals For Type: ALS Emergency II	7.0	\$ 5,967.78
BLS Emergency		
BLFD BLS Emergency Base Rate	364.0	230,550.32
Totals For Type: BLS Emergency	364.0	\$ 230,550.32
Mileage		
BLFD Mileage	1,747.3	26,558.87
Totals For Type: Mileage	1,747.3	\$ 26,558.87
Misc Fee		
Credit balance applied	23.0	0.23
Interest	12,014.0	120.14
Totals For Type: Misc Fee	12,037.0	\$ 120.37
Misc. Services		
BLFD ALS Intercept Fee	5.0	1,473.25
BLFD ALSII Intercept Fee	2.0	852.94
BLFD Standby Medic H.S. Sport	1.0	220.00
Totals For Type: Misc. Services	8.0	\$ 2,546.19
Misc. Supplies		
BLFD Oxygen	60.0	1,107.00
Totals For Type: Misc. Supplies	60.0	\$ 1,107.00
Treatment No Transport		
BLFD Treatment no transport	4.0	760.04

RescueNet™ Reporting

Charge Type Detail Report (Trip Date)

Period IS 201708 OR -201708; AND Company IS City of Bloomington

	<u>Count</u>	<u>Dollars</u>
City of Bloomington (cont.)		
Totals For Type: Treatment No Transport	4.0	\$ 760.04
Totals For Company: City of Bloomington	14451.3	\$437,866.25
Report Totals:	14,451.3	\$ 437,866.25

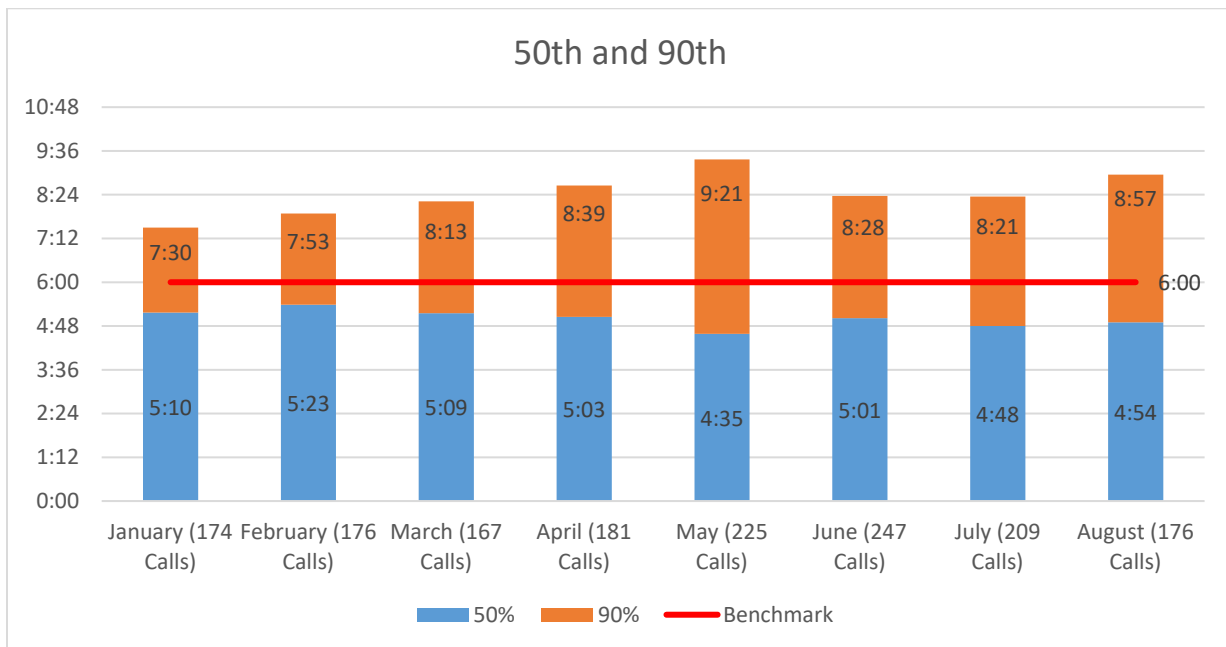
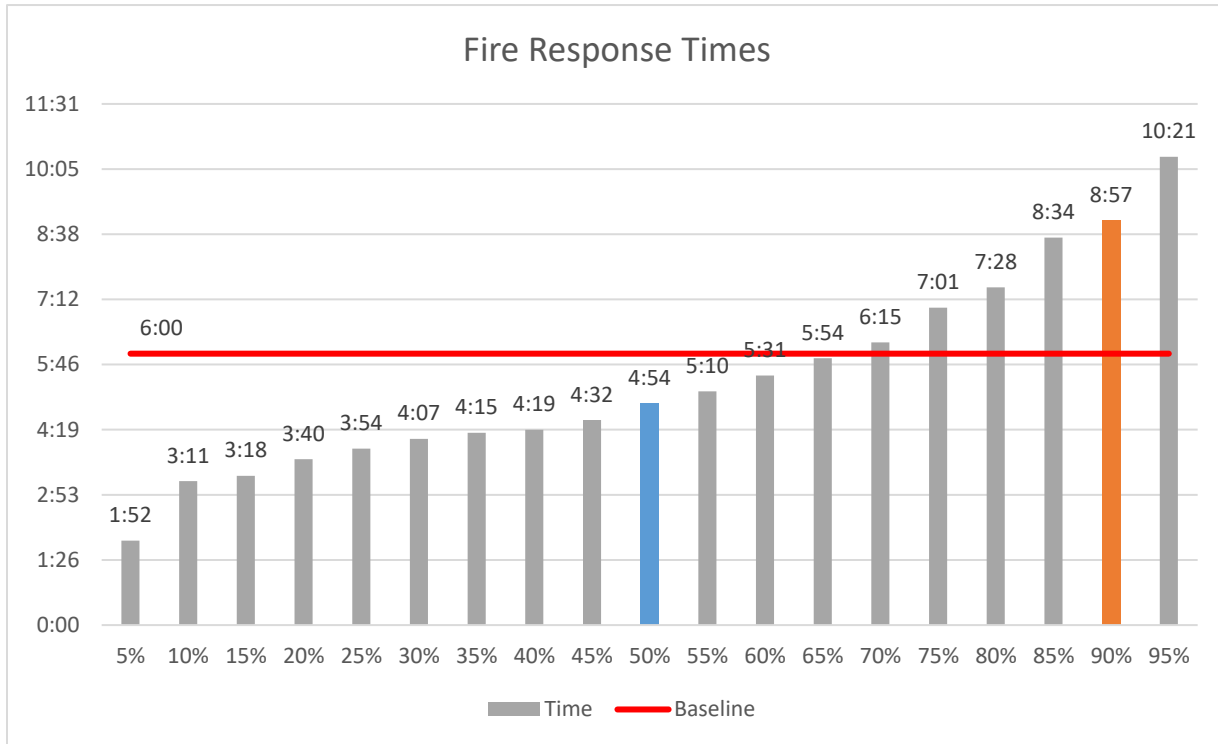
**Bloomington Comparison Report
August 2017**

	Current Month 08/2017	Previous Year 08/2016	Previous Month 07/2017
Charges			
BLS	364	444	260
ALS	224	272	169
ALS II	7	12	1
Charge Totals	\$437,866.25	\$519,987.82	\$315,847.60
Payments			
Payments	\$129,690.21	\$133,206.97	\$114,061.16
Bad Debt W/O	\$57,478.32	\$19,517.27	\$50,122.70
Cont/Misc W/O	\$134,395.65	\$153,728.86	\$158,161.15



Bloomington Fire Dept.

Fire Response Times August 2017

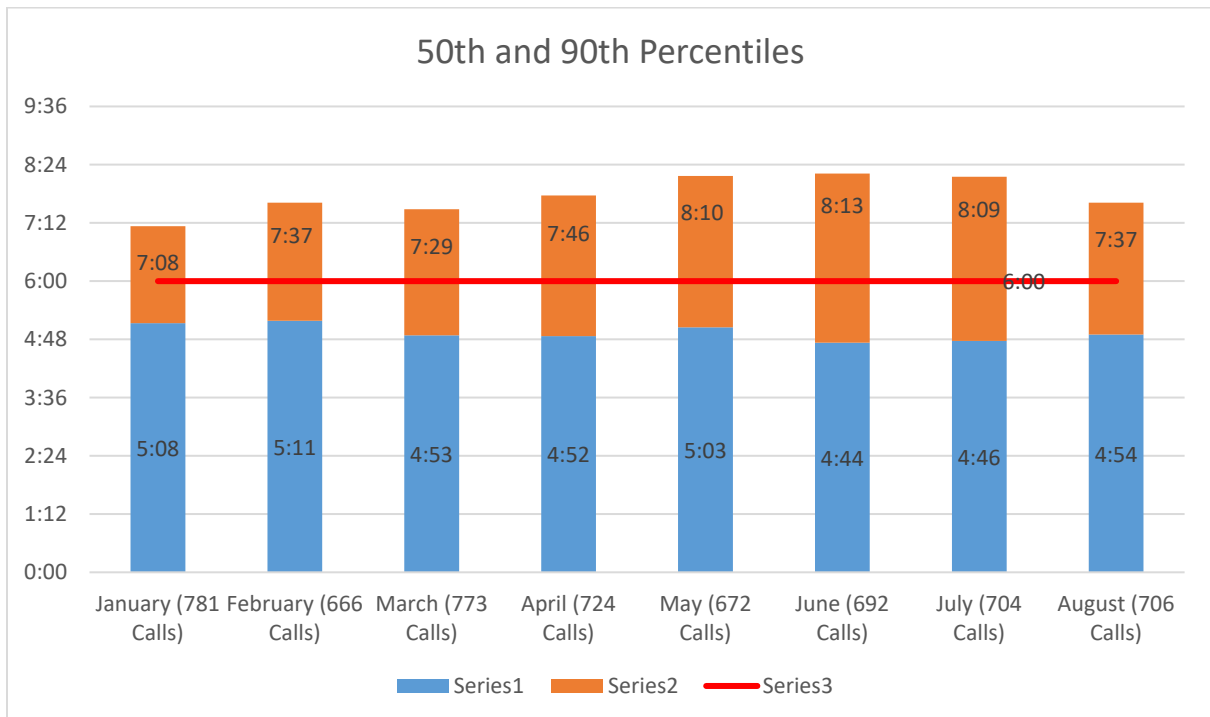
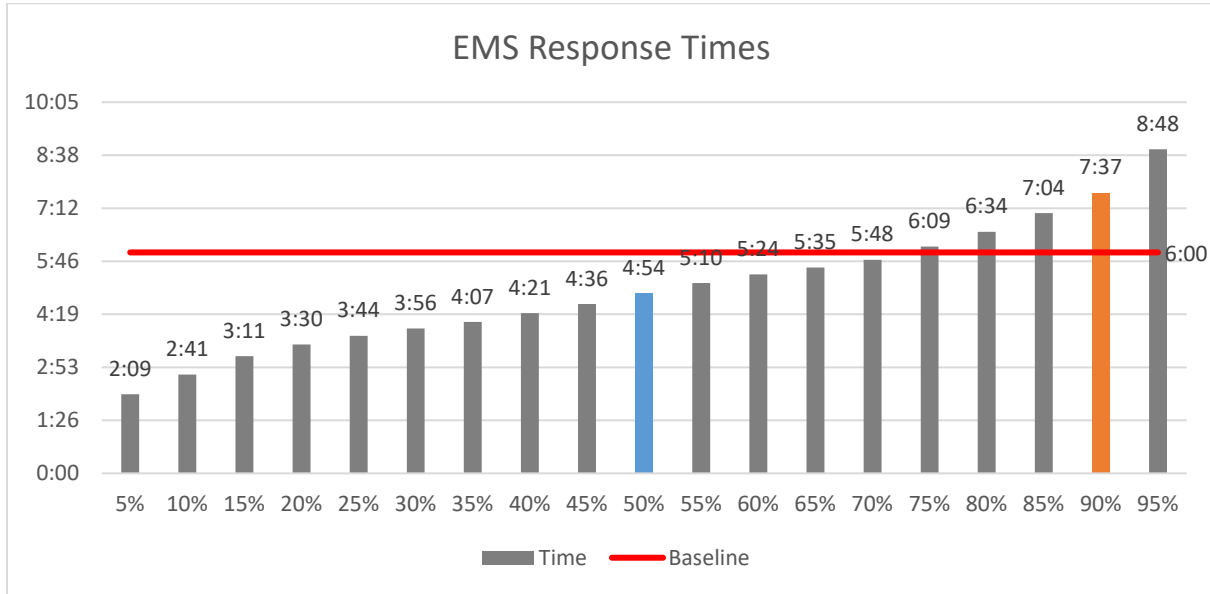




Bloomington Fire Dept.

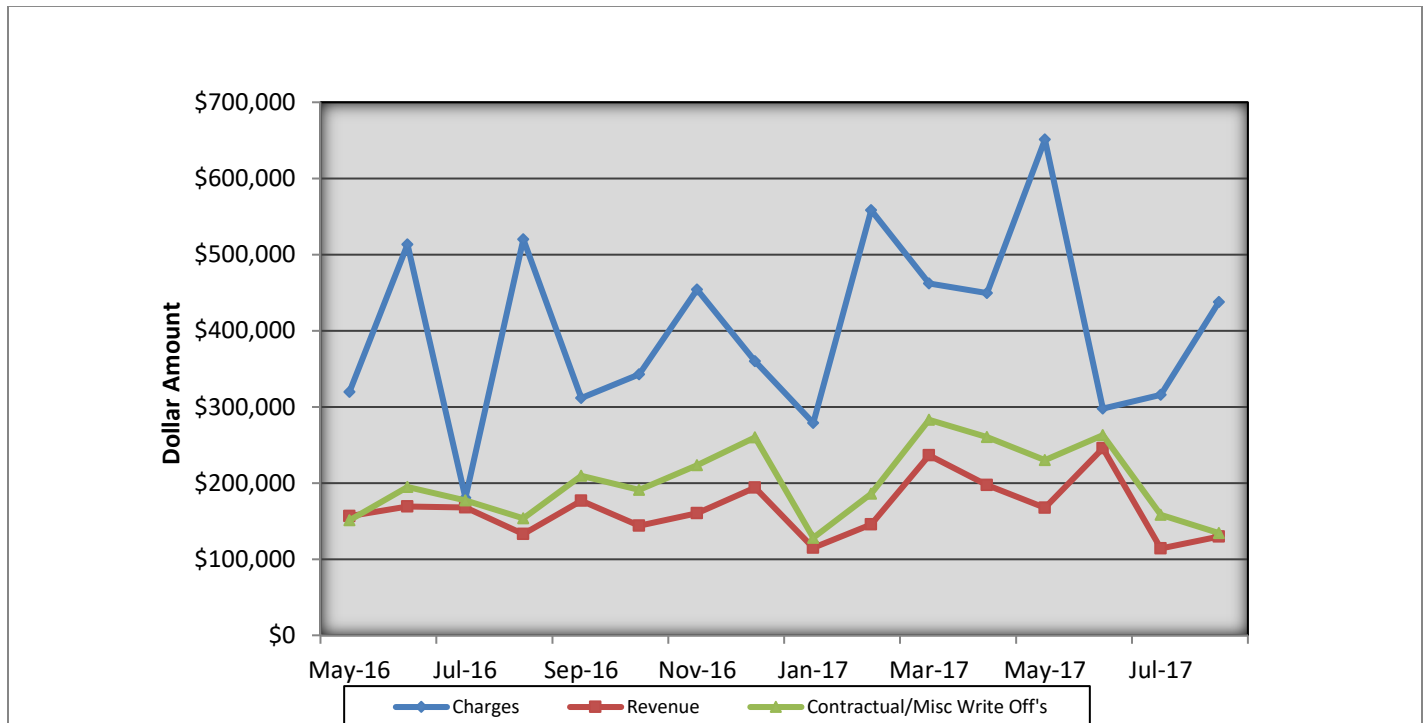
EMS Response Times

August 2017



Bloomington Fire Dept EMS Billing

Fiscal Year 2016/2017



- Charges represent billings for emergency transports, intercepts, and ambulance standby's.
- Revenue represents the amount of revenue collected for emergency transports, intercepts, and ambulance stand by's.
- Contractual/Miscellaneous Write Off's- are the combination of contractual allowances and miscellaneous write off's. Contractuals are the amounts above what federal and state mandated carriers allow for EMS services. Miscellaneous write off's include Financial Hardships, Bankruptcies, Small Balances, Workman's Compensation, and Incarcerated Patients.
- Bad Debt-Write off's on the accounts forwarded to a third party collection agency for further collection processing \$57,478.32

Totals Breakdown

Charge total-\$437,866.25

Revenue-\$129,690.21

Contractuals/Miscellaneous Write Offs \$134,395.65



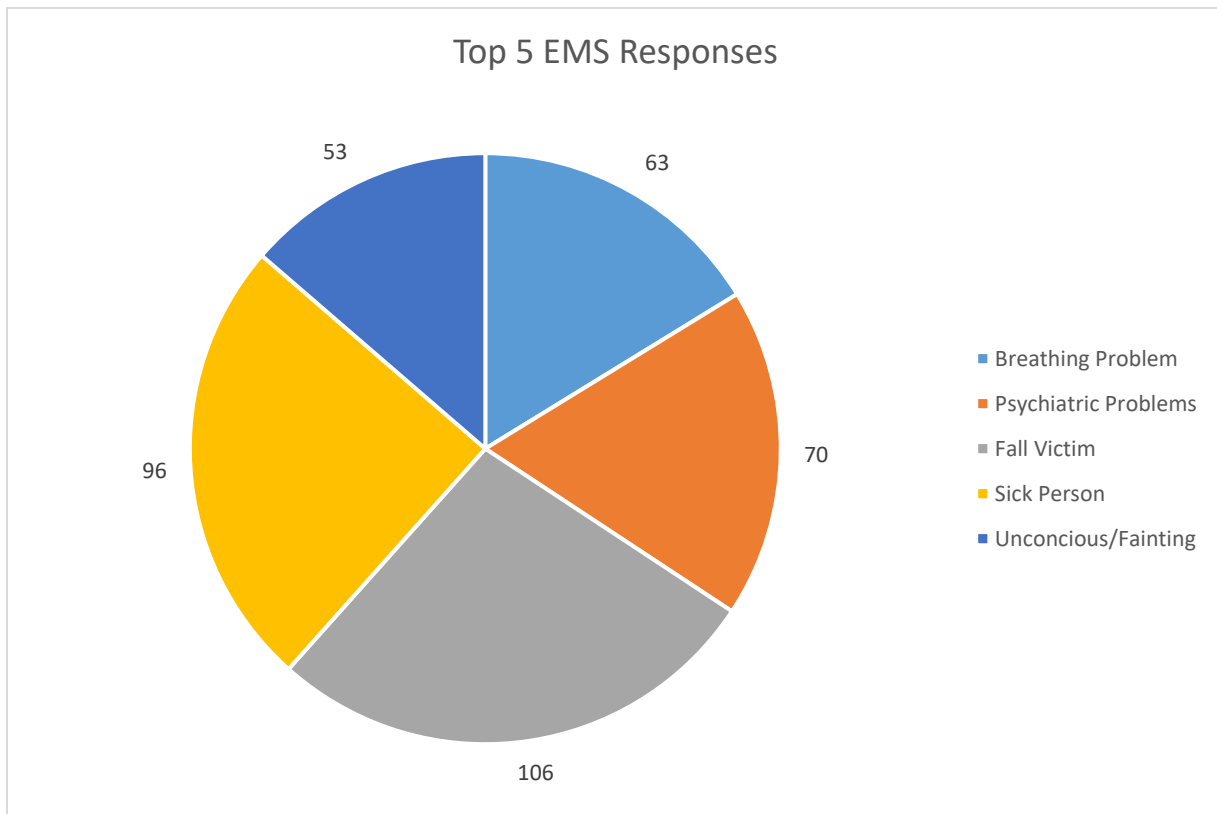
Bloomington Fire Dept.

Monthly EMS Response Report

August 2017



Total EMS Response: 706
Total Patients: 677
Total Transported: 584





Bloomington Fire Dept.

Monthly Fire Response Report

August 2017



Total Fire Response:	176
Total Structure Fires:	7
Total Estimated Dollar Loss (Property and Contents):	\$132,600

Top 5 Fire Responses

