

# Charge Type Detail Report (Trip Date)

Period IS 201707 OR -201707; AND Company IS City of Bloomington

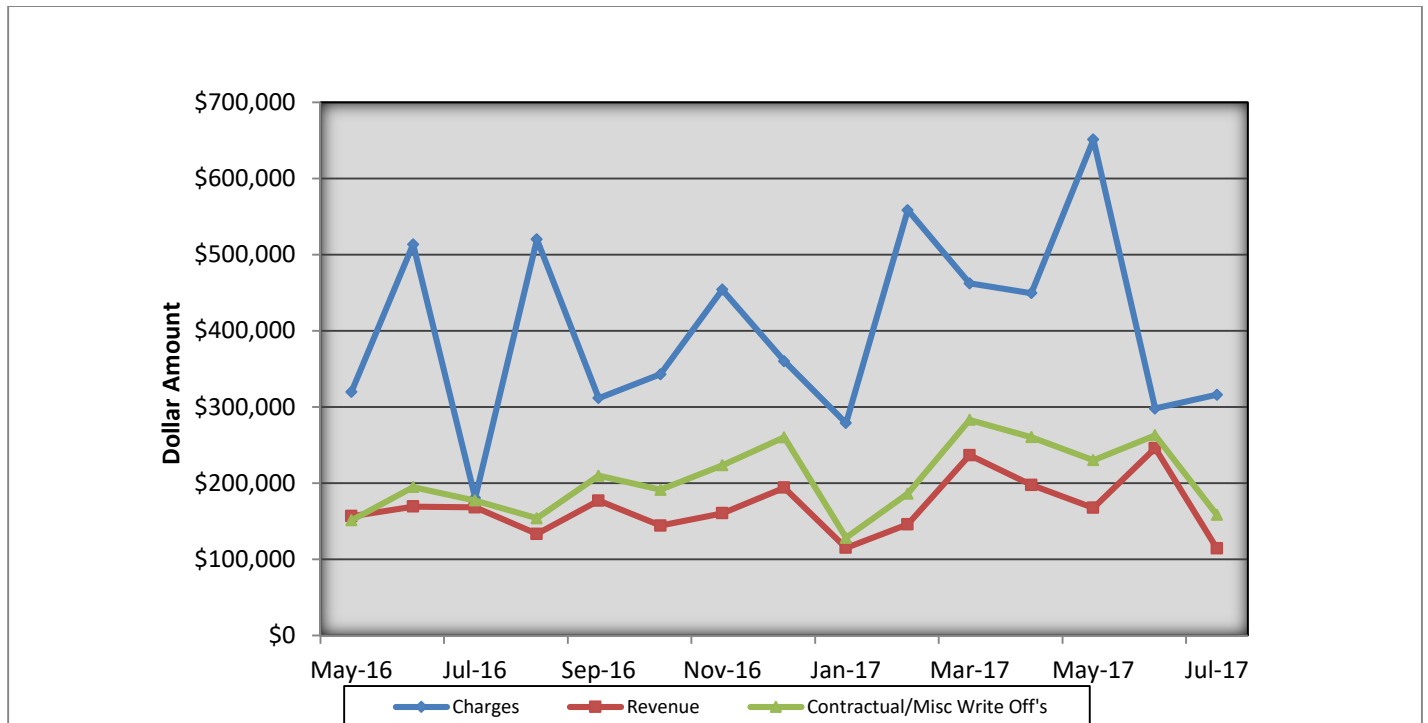
|  | <u>Count</u>   | <u>Dollars</u>       |
|--|----------------|----------------------|
| <b>City of Bloomington</b>                     |                |                      |
| <b>ALS Emergency</b>                           |                |                      |
| BLFD ALS Emergency Base Rate                   | 169.0          | 128,451.83           |
| <b>Totals For Type: ALS Emergency</b>          | <b>169.0</b>   | <b>\$ 128,451.83</b> |
| <b>ALS Emergency II</b>                        |                |                      |
| BLFD ALS II Emergency Base Rat                 | 1.0            | 852.54               |
| <b>Totals For Type: ALS Emergency II</b>       | <b>1.0</b>     | <b>\$ 852.54</b>     |
| <b>BLS Emergency</b>                           |                |                      |
| BLFD BLS Emergency Base Rate                   | 260.0          | 164,678.80           |
| <b>Totals For Type: BLS Emergency</b>          | <b>260.0</b>   | <b>\$ 164,678.80</b> |
| <b>Mileage</b>                                 |                |                      |
| BLFD Mileage                                   | 1,186.2        | 18,030.24            |
| <b>Totals For Type: Mileage</b>                | <b>1,186.2</b> | <b>\$ 18,030.24</b>  |
| <b>Misc Fee</b>                                |                |                      |
| Interest                                       | 3,299.0        | 32.99                |
| <b>Totals For Type: Misc Fee</b>               | <b>3,299.0</b> | <b>\$ 32.99</b>      |
| <b>Misc. Services</b>                          |                |                      |
| BLFD ALS Intercept Fee                         | 11.0           | 3,241.15             |
| BLFD Returned check fee                        | 1.0            | 25.00                |
| <b>Totals For Type: Misc. Services</b>         | <b>12.0</b>    | <b>\$ 3,266.15</b>   |
| <b>Misc. Supplies</b>                          |                |                      |
| BLFD Oxygen                                    | 29.0           | 535.05               |
| <b>Totals For Type: Misc. Supplies</b>         | <b>29.0</b>    | <b>\$ 535.05</b>     |
| <b>Totals For Company: City of Bloomington</b> | <b>4956.2</b>  | <b>\$315,847.60</b>  |
| <b>Report Totals:</b>                          | <b>4,956.2</b> | <b>\$ 315,847.60</b> |

**Bloomington Comparison Report  
July 2017**

|                      | <b>Current Month<br/>07/2017</b> | <b>Previous Year<br/>07/2016</b> | <b>Previous Month<br/>06/2017</b> |
|----------------------|----------------------------------|----------------------------------|-----------------------------------|
| <b>Charges</b>       |                                  |                                  |                                   |
| <b>BLS</b>           | 260                              | 171                              | 253                               |
| <b>ALS</b>           | 169                              | 74                               | 141                               |
| <b>ALS II</b>        | 1                                | 1                                | 7                                 |
| <b>Charge Totals</b> | <b>\$315,847.60</b>              | <b>\$180,389.17</b>              | <b>\$297,883.83</b>               |
| <b>Payments</b>      |                                  |                                  |                                   |
| <b>Payments</b>      | <b>\$114,061.16</b>              | <b>\$167,997.20</b>              | <b>\$245,645.87</b>               |
| <b>Bad Debt W/O</b>  | <b>\$50,122.70</b>               | <b>\$32,330.01</b>               | <b>\$45,844.48</b>                |
| <b>Cont/Misc W/O</b> | <b>\$158,161.15</b>              | <b>\$176,971.32</b>              | <b>\$262,857.04</b>               |

## Bloomington Fire Dept EMS Billing

Fiscal Year 2016/2017



- Charges represent billings for emergency transports, intercepts, and ambulance standby's.
- Revenue represents the amount of revenue collected for emergency transports, intercepts, and ambulance stand by's.
- Contractual/Miscellaneous Write Off's- are the combination of contractual allowances and miscellaneous write off's. Contractuals are the amounts above what federal and state mandated carriers allow for EMS services. Miscellaneous write off's include Financial Hardships, Bankruptcies, Small Balances, Workman's Compensation, and Incarcerated Patients.
- Bad Debt-Write off's on the accounts forwarded to a third party collection agency for further collection processing \$50,122.70

### Totals Breakdown

Charge total-\$315,847.60

Revenue-\$114,061.16

Contractuals/Miscellaneous Write Offs \$158,161.15



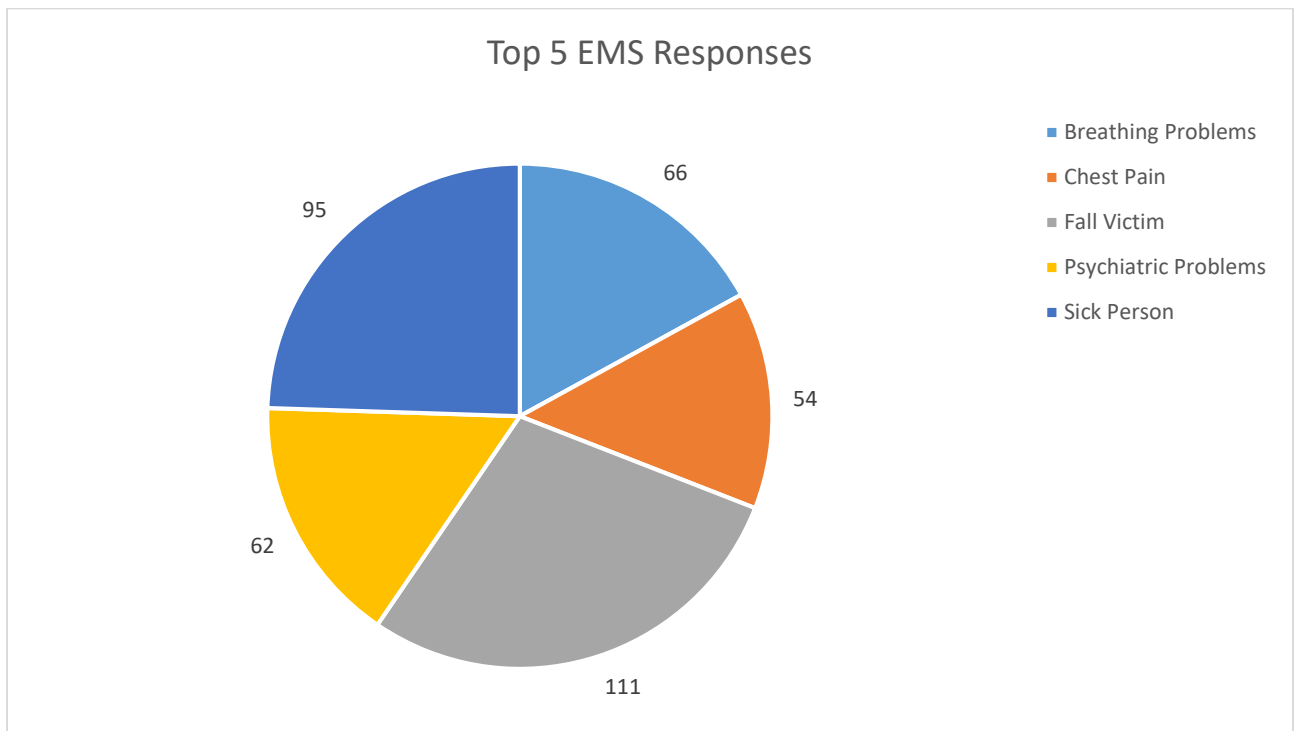
# Bloomington Fire Dept.

## Monthly EMS Response Report

### July 2017



Total EMS Response: 704  
Total Patients: 668  
Total Transported: 577





# Bloomington Fire Dept.

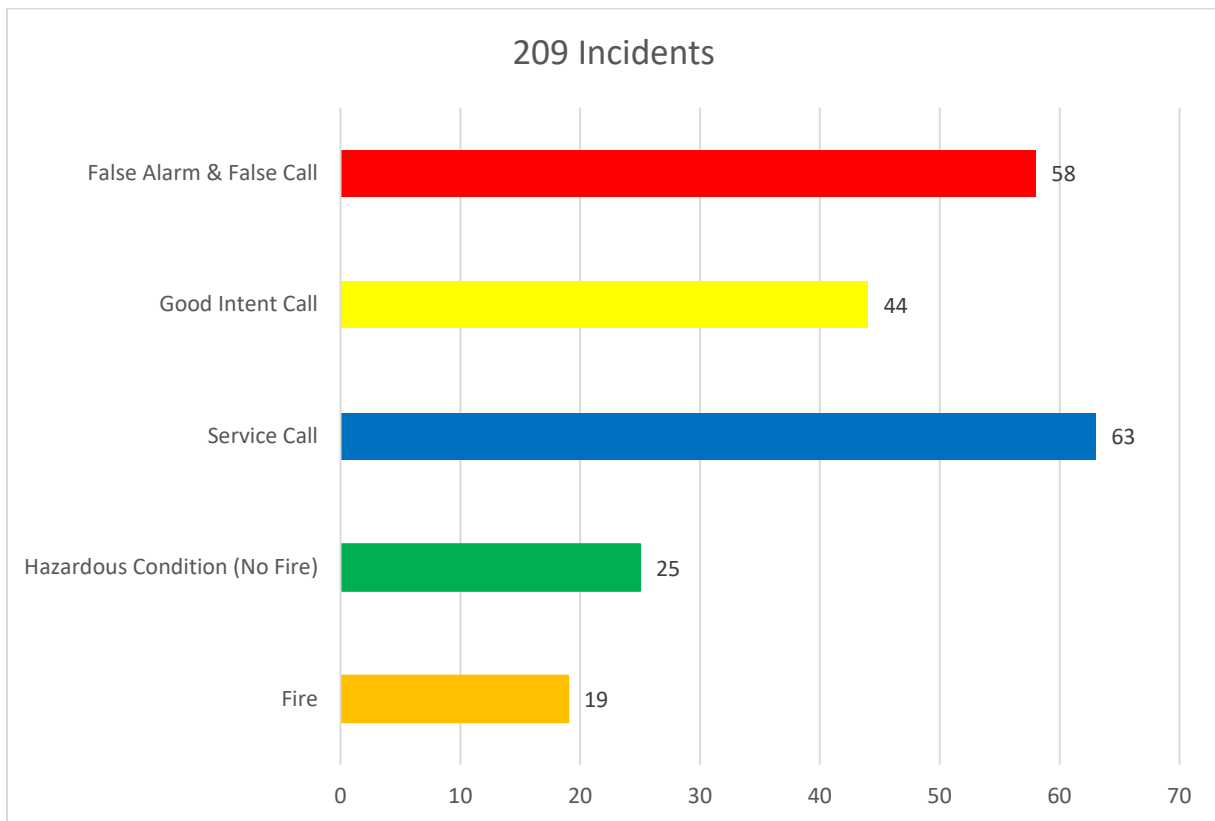
## Monthly Fire Response Report

### July 2017



|  |          |
|--|----------|
| Total Fire Response:                                 | 209      |
| Total Structure Fires:                               | 19       |
| Total Estimated Dollar Loss (Property and Contents): | \$14,190 |

#### Top 5 Fire Responses

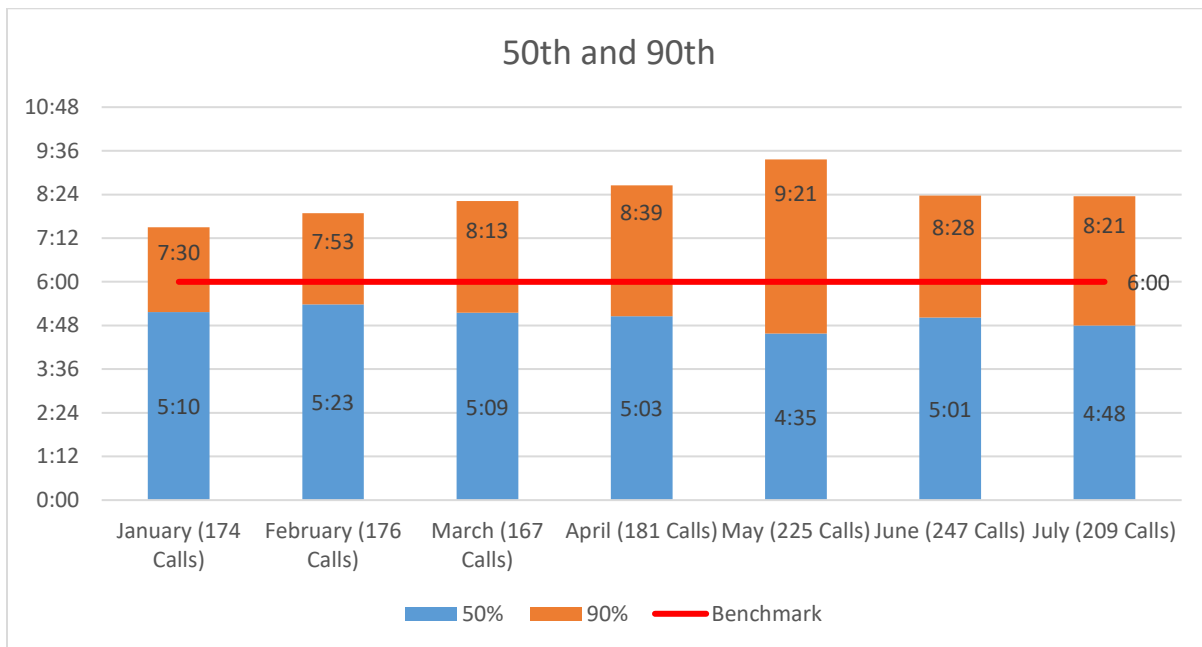
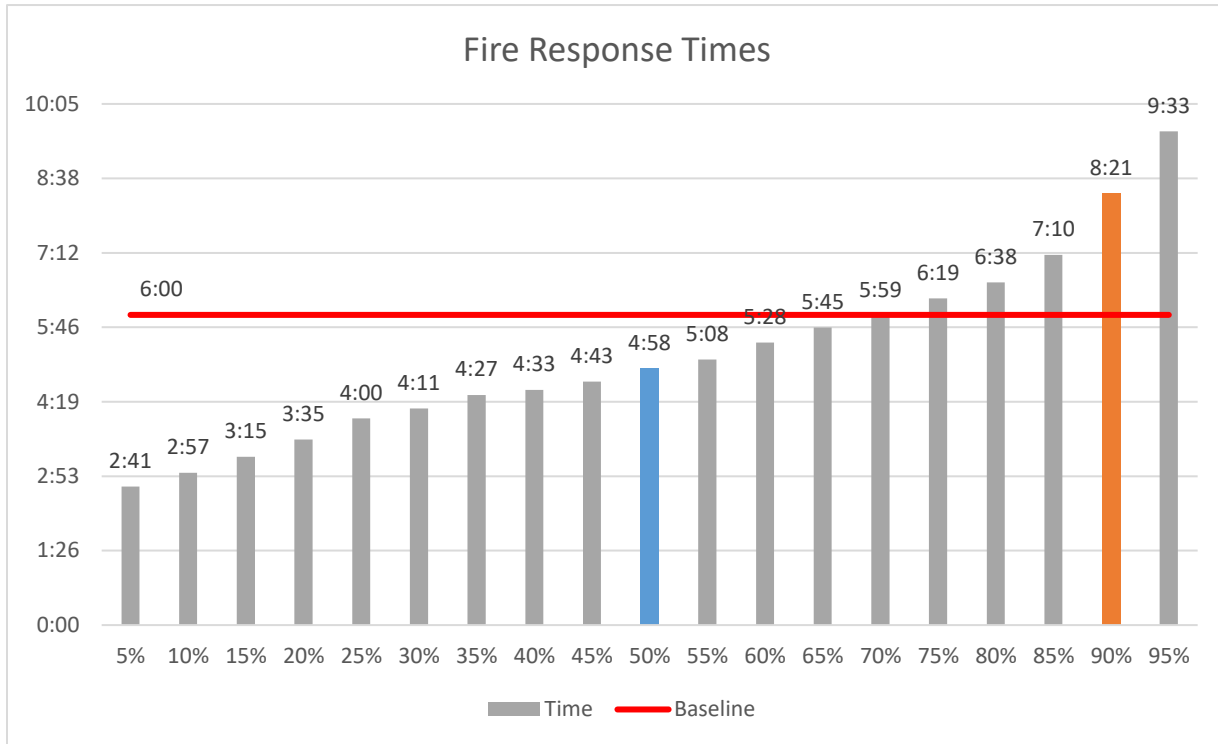




# Bloomington Fire Dept.

## Fire Response Times

July 2017





# Bloomington Fire Dept.

## EMS Response Times

July 2017

