

Charge Type Detail Report (Trip Date)

Period IS 201704 OR -201704; AND Company IS City of Bloomington

	<u>Count</u>	<u>Dollars</u>
City of Bloomington		
ALS Emergency		
BLFD ALS Emergency Base Rate	211.0	160,374.77
Totals For Type: ALS Emergency	211.0	\$ 160,374.77
ALS Emergency II		
BLFD ALS II Emergency Base Rat	3.0	2,557.62
Totals For Type: ALS Emergency II	3.0	\$ 2,557.62
BLS Emergency		
BLFD BLS Emergency Base Rate	399.0	252,700.17
Totals For Type: BLS Emergency	399.0	\$ 252,700.17
Mileage		
BLFD Mileage	1,701.6	25,869.28
Totals For Type: Mileage	1,701.6	\$ 25,869.28
Misc Fee		
Credit balance applied	53.0	0.53
Interest	3,012.0	30.12
Totals For Type: Misc Fee	3,065.0	\$ 30.65
Misc. Services		
BLFD ALS Intercept Fee	18.0	5,303.70
Totals For Type: Misc. Services	18.0	\$ 5,303.70
Misc. Supplies		
BLFD Oxygen	67.0	1,236.15
Totals For Type: Misc. Supplies	67.0	\$ 1,236.15
Treatment No Transport		
BLFD Treatment no transport	7.0	1,330.07
Totals For Type: Treatment No Transport	7.0	\$ 1,330.07

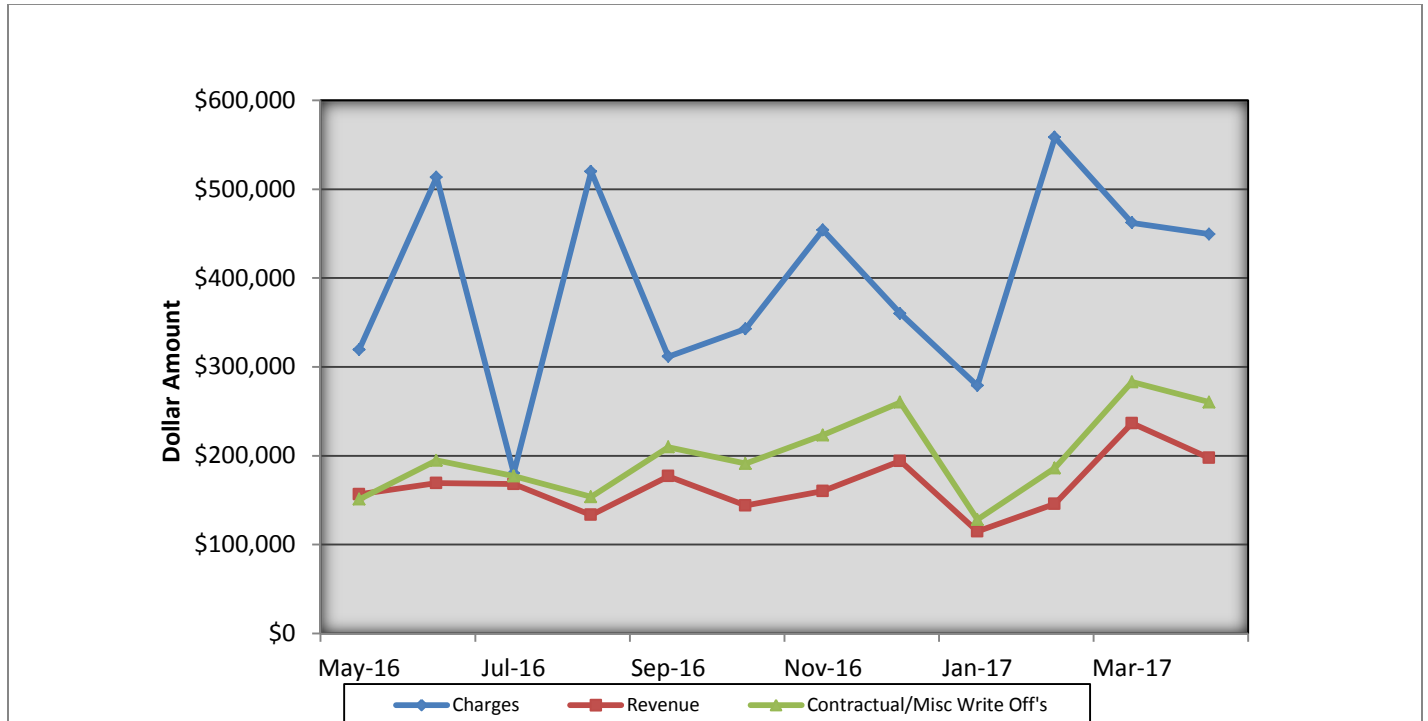
Charge Type Detail Report (Trip Date)

Period IS 201704 OR -201704; AND Company IS City of Bloomington

	<u>Count</u>	<u>Dollars</u>
Totals For Company: City of Bloomington	5471.6	\$449,402.41
Report Totals:	5,471.6	\$ 449,402.41

Bloomington Fire Dept EMS Billing

Fiscal Year 2016/2017



- Charges represent billings for emergency transports, intercepts, and ambulance standby's.
- Revenue represents the amount of revenue collected for emergency transports, intercepts, and ambulance stand by's.
- Contractual/Miscellaneous Write Off's- are the combination of contractual allowances and miscellaneous write off's. Contractuals are the amounts above what federal and state mandated carriers allow for EMS services. Miscellaneous write off's include Financial Hardships, Bankruptcies, Small Balances, Workman's Compensation, and Incarcerated Patients.
- Bad Debt-Write off's on the accounts forwarded to a third party collection agency for further collection processing \$35,581.57

Totals Breakdown

Charge total-\$449,402.40

Revenue-\$197,458.16

Contractuals/Miscellaneous Write Offs \$260,317.25



Bloomington Fire Dept.

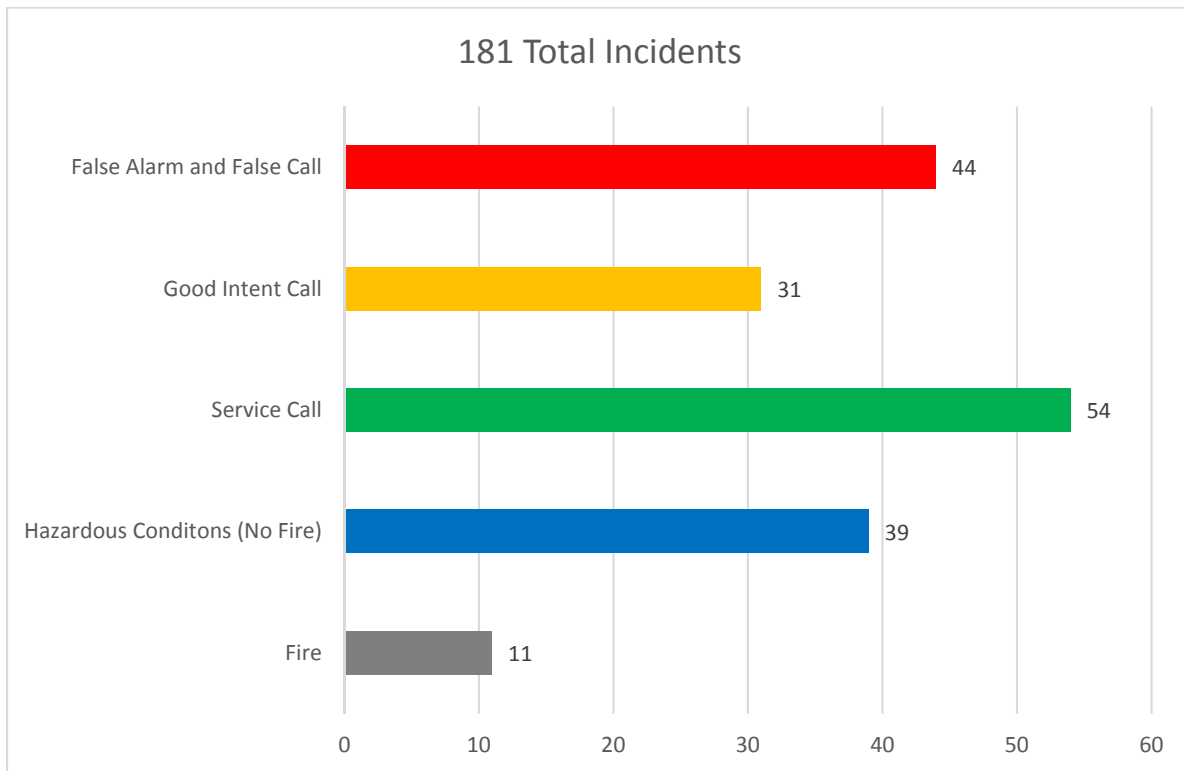
Monthly Fire Response Report

April 2017



Total Fire Response:	181
Total Structure Fires:	11
Total Estimated Dollar Loss (Property and Contents):	\$123,050

Top 5 Fire Responses





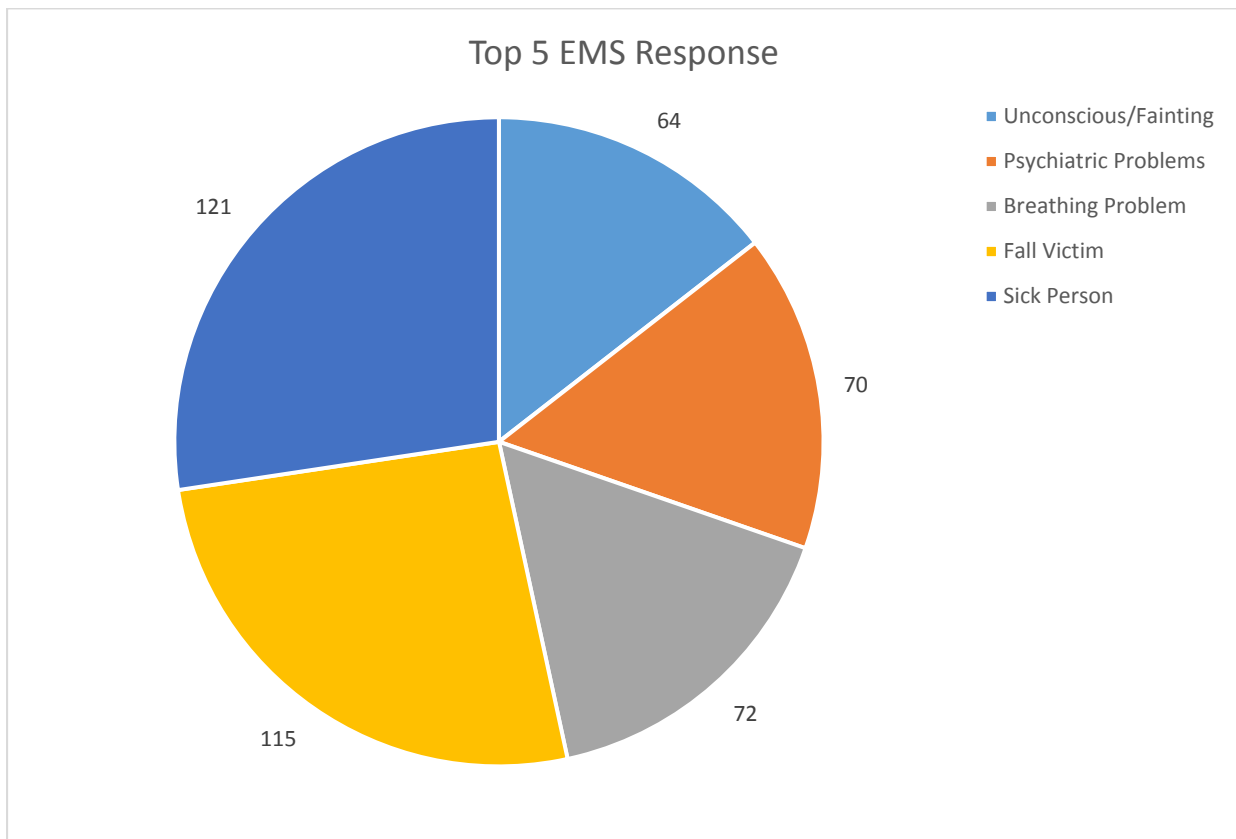
Bloomington Fire Dept.

Monthly EMS Response Report

April 2017



Total EMS Response: 724
Total Patients: 688
Total Transported: 597

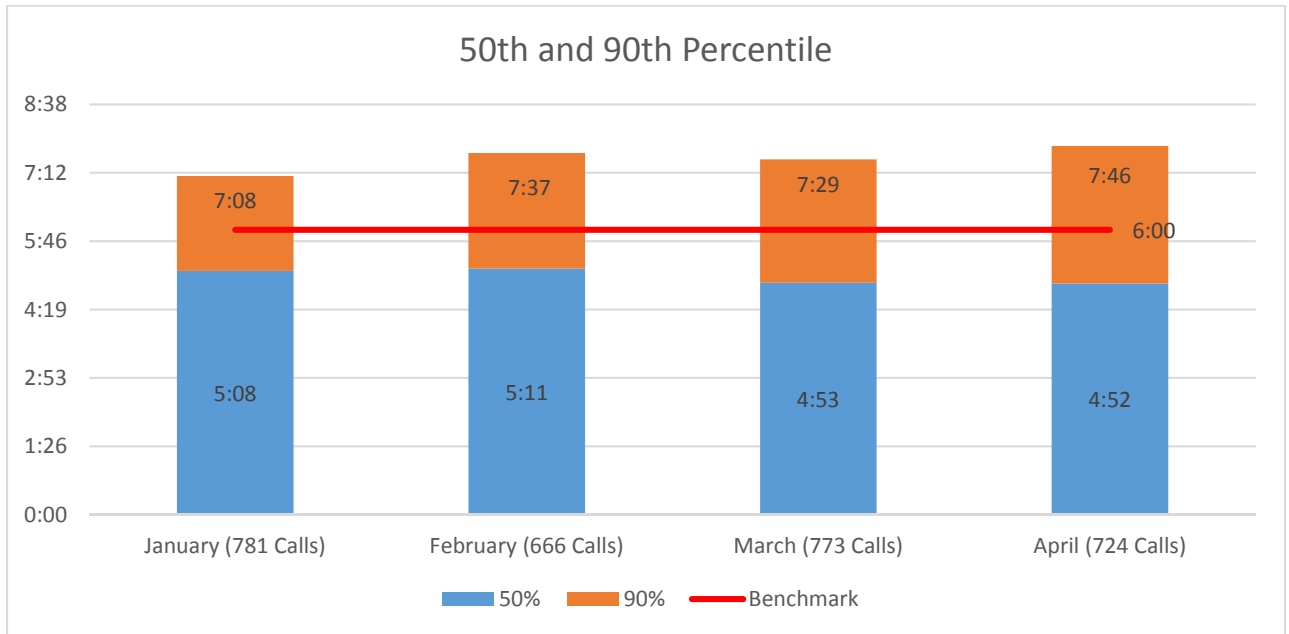
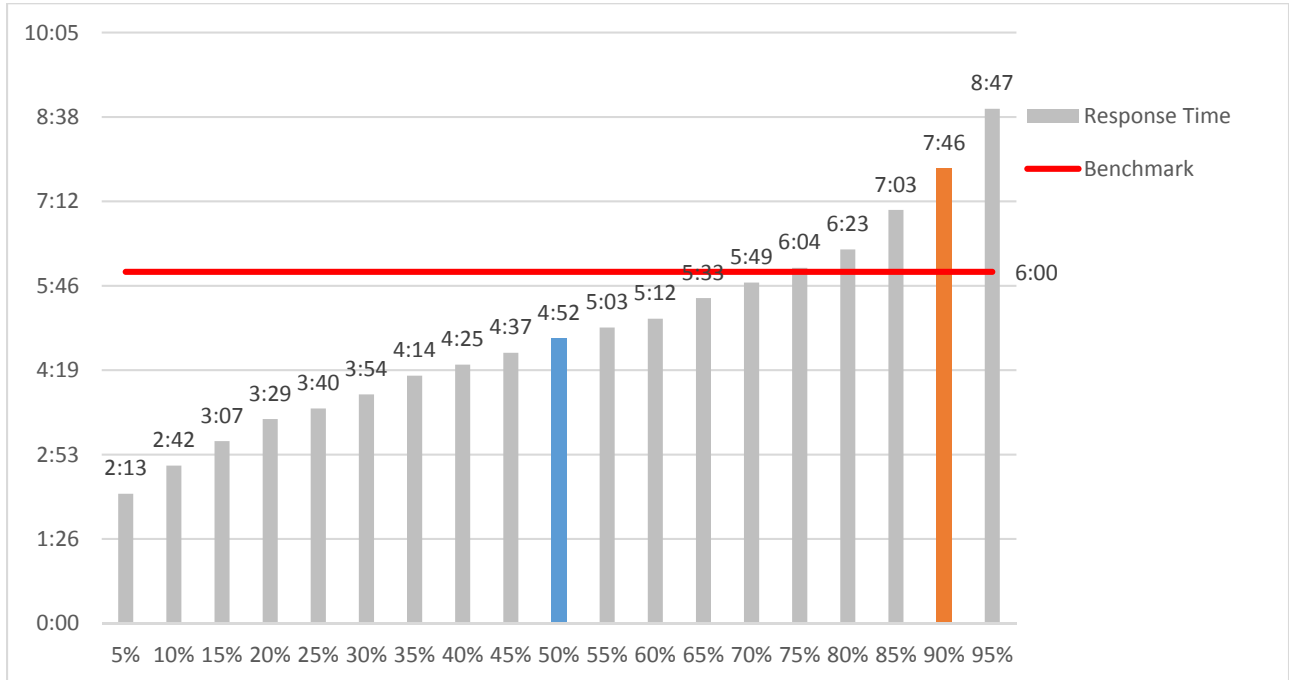




Bloomington Fire Dept.

EMS Response Times

April 2017



**Bloomington Comparison Report
April 2017**

	Current Month 04/2017	Previous Year 04/2016	Previous Month 03/2017
Charges			
BLS	399	313	395
ALS	211	201	226
ALS II	3	3	4
Charge Totals	\$449,402.40	\$372,439.72	\$462,189.84
Payments			
Payments	\$197,458.16	\$218,460.68	\$236,521.53
Bad Debt W/O	\$35,581.57	\$22,284.31	\$19,587.63
Cont/Misc W/O	\$260,317.25	\$195,187.37	\$265,375.08