

Charge Type Detail Report (Trip Date)

Period IS 201703 OR -201703; AND Company IS City of Bloomington

	<u>Count</u>	<u>Dollars</u>
City of Bloomington		
ALS Emergency		
BLFD ALS Emergency Base Rate	226.0	171,710.05
Totals For Type: ALS Emergency	226.0	\$ 171,710.05
ALS Emergency II		
BLFD ALS II Emergency Base Rat	4.0	3,410.16
Totals For Type: ALS Emergency II	4.0	\$ 3,410.16
BLS Emergency		
BLFD BLS Emergency Base Rate	395.0	249,982.69
Totals For Type: BLS Emergency	395.0	\$ 249,982.69
Mileage		
BLFD Mileage	1,731.9	26,316.67
Totals For Type: Mileage	1,731.9	\$ 26,316.67
Misc Fee		
Interest	26,747.0	267.47
Totals For Type: Misc Fee	26,747.0	\$ 267.47
Misc. Services		
BLFD ALS Intercept Fee	18.0	5,286.54
BLFD ALSII Intercept Fee	1.0	426.47
BLFD Standby Medic Comm Event	3.0	1,452.00
BLFD Stby EMS Chs Comm 15 min	26.0	786.50
Totals For Type: Misc. Services	48.0	\$ 7,951.51
Misc. Supplies		
BLFD Oxygen	78.0	1,438.56
Totals For Type: Misc. Supplies	78.0	\$ 1,438.56
Treatment No Transport		
BLFD Treatment no transport	6.0	1,112.73

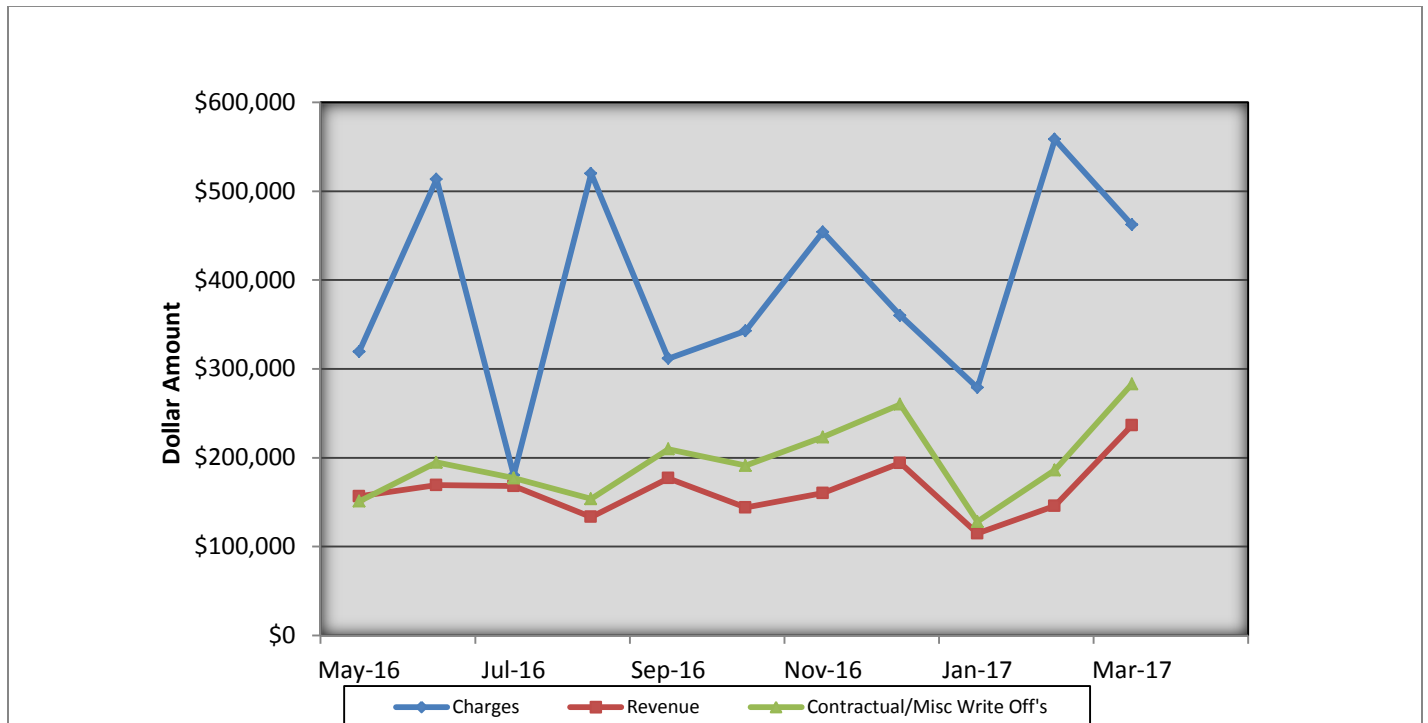
Charge Type Detail Report (Trip Date)

Period IS 201703 OR -201703; AND Company IS City of Bloomington

	<u>Count</u>	<u>Dollars</u>
City of Bloomington (cont.)		
Totals For Type: Treatment No Transport	6.0	\$ 1,112.73
Totals For Company: City of Bloomington	29235.9	\$462,189.84
Report Totals:	29,235.9	\$ 462,189.84

Bloomington Fire Dept EMS Billing

Fiscal Year 2016/2017



- Charges represent billings for emergency transports, intercepts, and ambulance standby's.
- Revenue represents the amount of revenue collected for emergency transports, intercepts, and ambulance stand by's.
- Contractual/Miscellaneous Write Off's- are the combination of contractual allowances and miscellaneous write off's. Contractuals are the amounts above what federal and state mandated carriers allow for EMS services. Miscellaneous write off's include Financial Hardships, Bankruptcies, Small Balances, Workman's Compensation, and Incarcerated Patients.
- Bad Debt-Write off's on the accounts forwarded to a third party collection agency for further collection processing \$19,587.63

Totals Breakdown

Charge total-\$462,189.84

Revenue-\$236,521.53

Contractuals/Miscellaneous Write Offs \$283,004.08

**Bloomington Comparison Report
March 2017**

	Current Month 03/2017	Previous Year 03/2016	Previous Month 02/2017
Charges			
BLS	395	369	538
ALS	226	232	224
ALS II	4	5	7
Charge Totals	\$462,189.84	\$439,293.60	\$558,332.15
Payments			
Payments	\$236,521.53	\$187,410.55	\$145,710.44
Bad Debt W/O	\$19,587.63	\$33,924.87	\$29,145.84
Cont/Misc W/O	\$283,004.08	\$201,170.60	\$185,979.58



Bloomington Fire Dept.

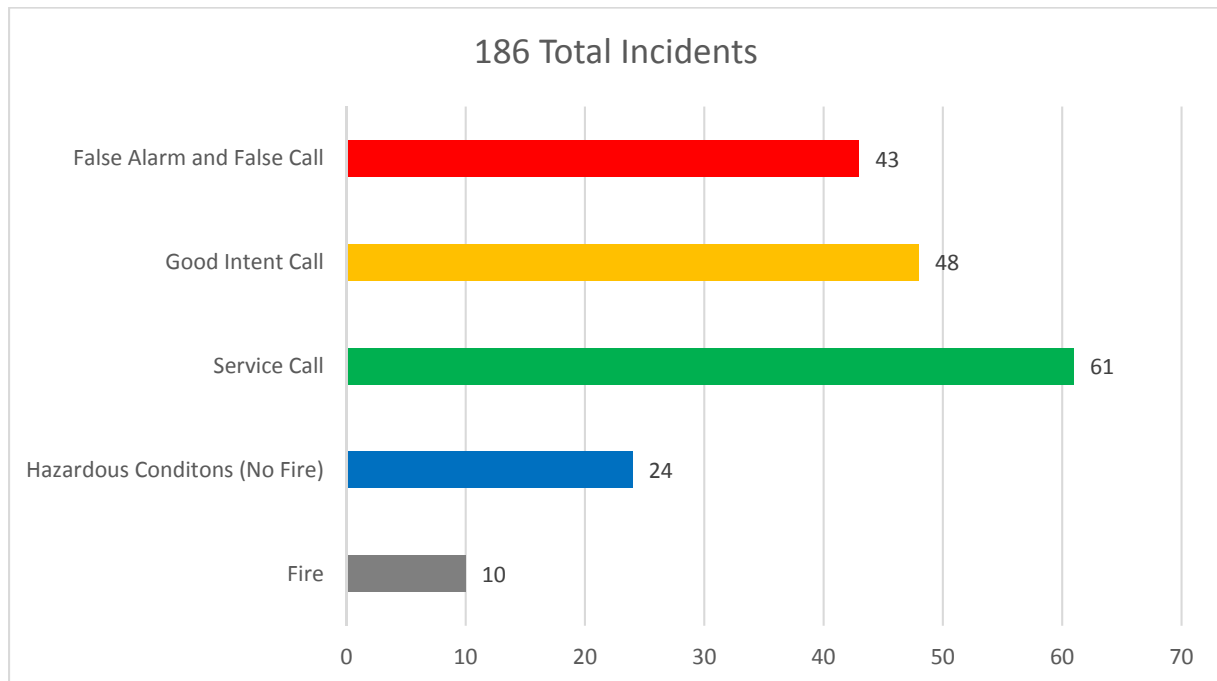
Monthly Fire Response Report

March 2017



Total Fire Response:	186
Total Structure Fires:	10
Total Estimated Dollar Loss (Property and Contents):	\$103,250

Top 5 Fire Responses





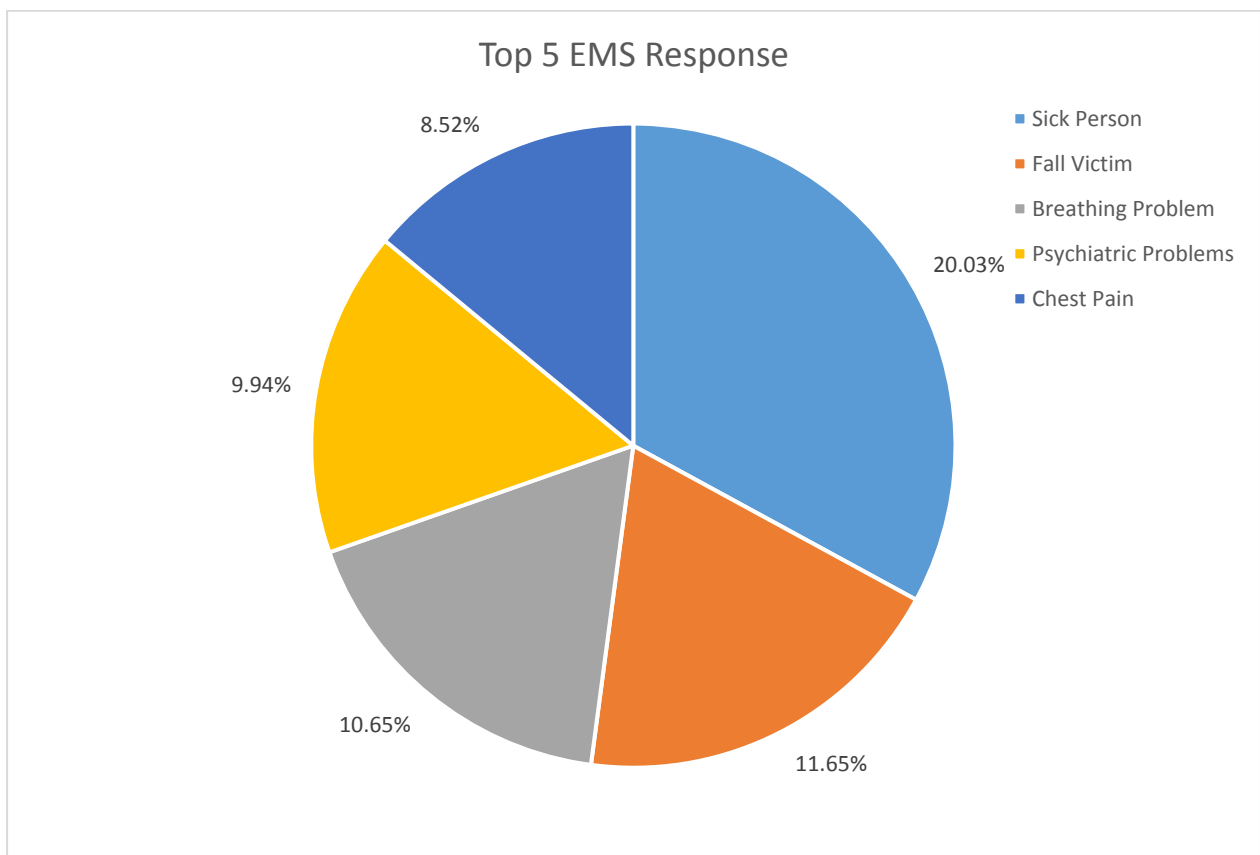
Bloomington Fire Dept.

Monthly EMS Response Report

March 2017



Total EMS Response: 754
Total Patients: 704
Total Transported: 617

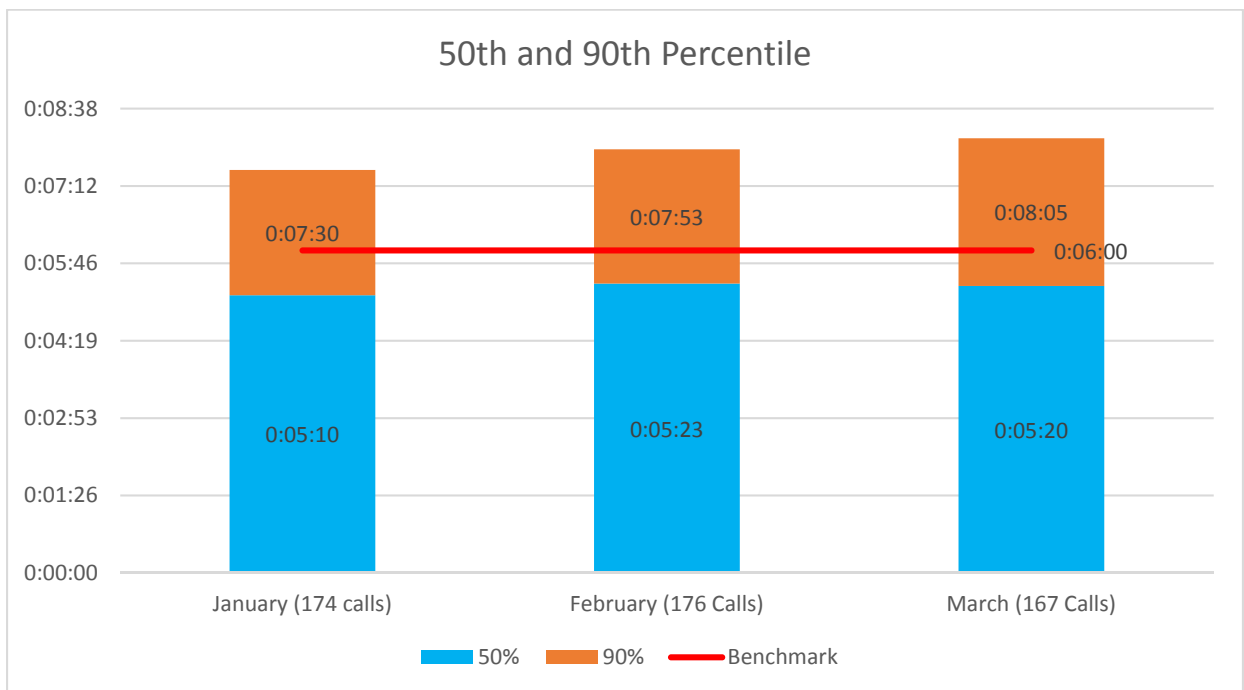
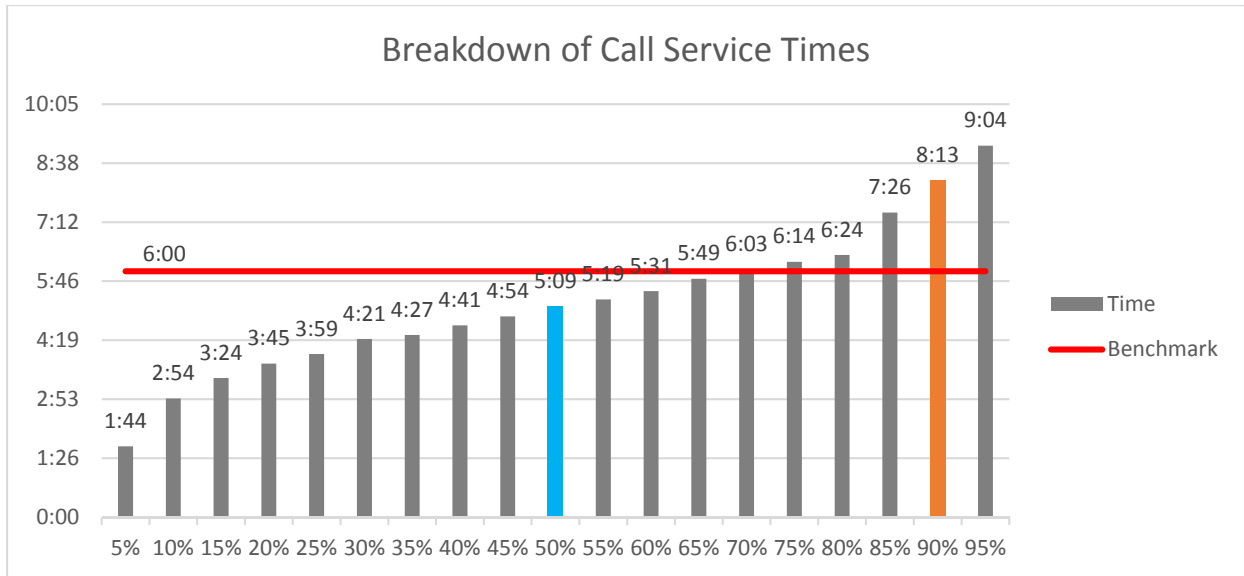




Bloomington Fire Dept.

Fire Response Times

March 2017





Bloomington Fire Dept.

EMS Response Times

March 2017

