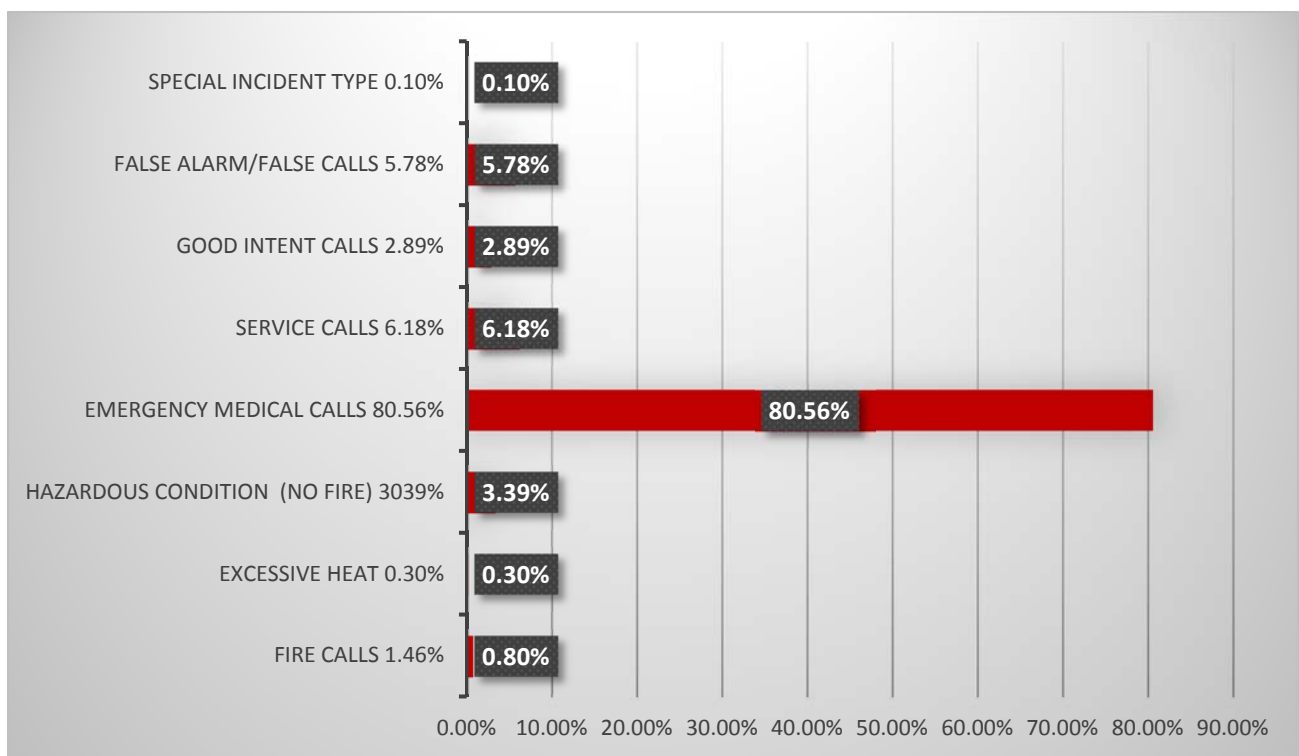


# DECEMBER 2016 FIRE DEPARTMENT OPERATIONS REPORT



# Charge Type Detail Report (Trip Date)

Period IS 201612 OR -201612; AND Company IS City of Bloomington

	<u>Count</u>	<u>Dollars</u>
<b>City of Bloomington</b>		
<b>ALS Emergency</b>		
BLFD ALS Emergency Base Rate	170.0	125,448.10
<b>Totals For Type: ALS Emergency</b>	<b>170.0</b>	<b>\$ 125,448.10</b>
<b>ALS Emergency II</b>		
BLFD ALS II Emergency Base Rat	2.0	1,655.42
<b>Totals For Type: ALS Emergency II</b>	<b>2.0</b>	<b>\$ 1,655.42</b>
<b>ALS Non Emergency</b>		
BLFD ALS Non Emergency Base Ra	0.0	0.00
<b>Totals For Type: ALS Non Emergency</b>	<b>0.0</b>	<b>\$ 0.00</b>
<b>BLS Emergency</b>		
BLFD BLS Emergency Base Rate	341.0	209,691.13
<b>Totals For Type: BLS Emergency</b>	<b>341.0</b>	<b>\$ 209,691.13</b>
<b>Mileage</b>		
BLFD Mileage	1,444.3	21,317.87
<b>Totals For Type: Mileage</b>	<b>1,444.3</b>	<b>\$ 21,317.87</b>
<b>Misc Fee</b>		
credit balance applied dollar	1.0	1.00
Interest	13,014.0	133.04
<b>Totals For Type: Misc Fee</b>	<b>13,015.0</b>	<b>\$ 134.04</b>
<b>Misc. Services</b>		
BLFD ALS Intercept Fee	3.0	858.21
<b>Totals For Type: Misc. Services</b>	<b>3.0</b>	<b>\$ 858.21</b>
<b>Misc. Supplies</b>		
BLFD Oxygen	40.0	716.40
<b>Totals For Type: Misc. Supplies</b>	<b>40.0</b>	<b>\$ 716.40</b>

# Charge Type Detail Report (Trip Date)

Period IS 201612 OR -201612; AND Company IS City of Bloomington

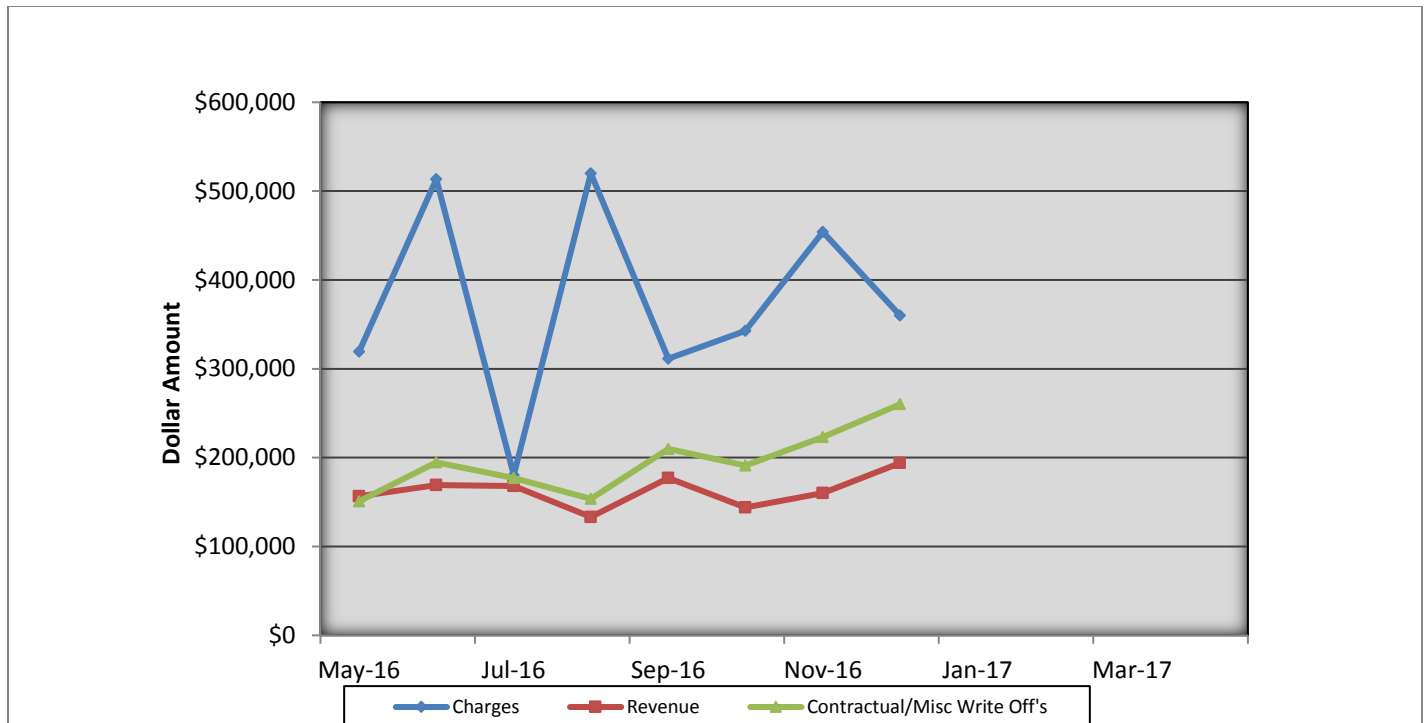
	<u>Count</u>	<u>Dollars</u>
<b>City of Bloomington (cont.)</b>		
<b>Treatment No Transport</b>		
BLFD Treatment no transport	1.0	184.48
<b>Totals For Type: Treatment No Transport</b>	<b>1.0</b>	<b>\$ 184.48</b>
<hr/>		
<b>Totals For Company: City of Bloomington</b>	<b>15016.3</b>	<b>\$360,005.65</b>
<b>Report Totals:</b>	<b>15,016.3</b>	<b>\$ 360,005.65</b>

**Bloomington Comparison Report  
December 2016**

	<b>Current Month 12/2016</b>	<b>Previous Year 12/2015</b>	<b>Previous Month 11/2016</b>
<b>Charges</b>			
<b>BLS</b>	<b>341</b>	<b>373</b>	<b>387</b>
<b>ALS</b>	<b>170</b>	<b>266</b>	<b>239</b>
<b>ALS II</b>	<b>2</b>	<b>7</b>	<b>8</b>
<b>Charge Totals</b>	<b>\$360,005.65</b>	<b>\$455,999.52</b>	<b>\$453,960.99</b>
<b>Payments</b>			
<b>Payments</b>	<b>\$193,929.66</b>	<b>\$154,135.32</b>	<b>\$160,179.46</b>
<b>Bad Debt W/O</b>	<b>\$30,178.92</b>	<b>\$-1,746.92</b>	<b>\$36,189.53</b>
<b>Cont/Misc W/O</b>	<b>\$260,070.22</b>	<b>\$177,301.15</b>	<b>\$223,209.49</b>

## Bloomington Fire Dept EMS Billing

Fiscal Year 2015/2016



- Charges represent billings for emergency transports, intercepts, and ambulance standby's.
- Revenue represents the amount of revenue collected for emergency transports, intercepts, and ambulance stand by's.
- Contractual/Miscellaneous Write Off's- are the combination of contractual allowances and miscellaneous write off's. Contractuals are the amounts above what federal and state mandated carriers allow for EMS services. Miscellaneous write off's include Financial Hardships, Bankruptcies, Small Balances, Workman's Compensation, and Incarcerated Patients.
- Bad Debt-Write off's on the accounts forwarded to a third party collection agency for further collection processing \$30,178.92

### Totals Breakdown

---

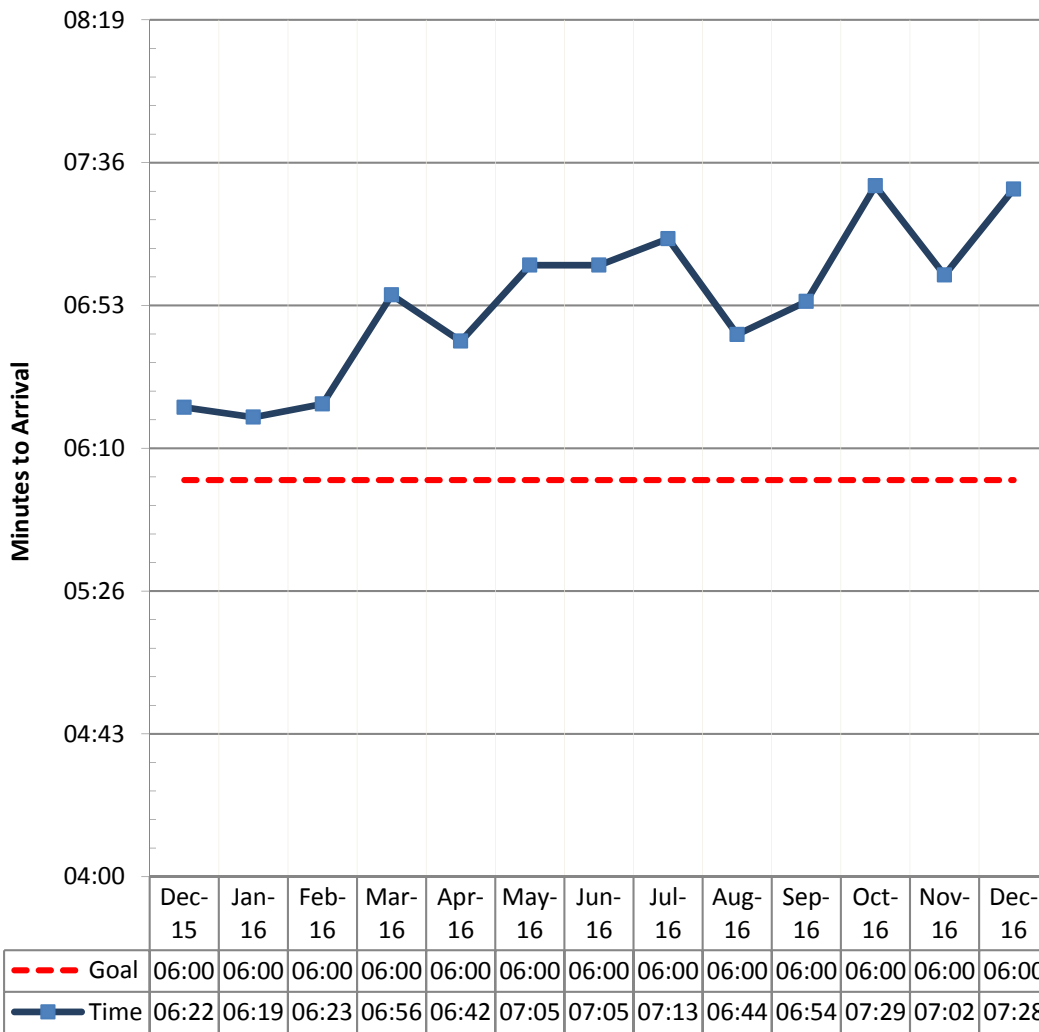
Charge total-\$360,005.65

Revenue-\$193,929.66

Contractuals/Miscellaneous Write Offs \$260,070.22

# Bloomington Fire Department Response Time Analysis Report Fire Calls

**Call Creation to Arrival**  
Goal < 6 Minutes



# Bloomington Fire Department Response Time Analysis Report EMS Calls

