

**Bloomington Comparison Report  
July 2016**

	<b>Current Month 07/2016</b>	<b>Previous Year 07/2015</b>	<b>Previous Month 06/2016</b>
<b>Charges</b>			
<b>BLS</b>	171	341	469
<b>ALS</b>	74	216	252
<b>ALS II</b>	1	9	3
<b>Charge Totals</b>	<b>\$180,389.17</b>	<b>\$396,735.44</b>	<b>\$513,389.60</b>
<b>Payments</b>			
<b>Payments</b>	<b>\$167,997.20</b>	<b>\$219,166.70</b>	<b>\$169,096.77</b>
<b>Bad Debt W/O</b>	<b>\$32,330.01</b>	<b>\$32,377.61</b>	<b>\$52,468.59</b>
<b>Cont/Misc W/O</b>	<b>\$176,971.32</b>	<b>\$221,649.99</b>	<b>\$194,745.80</b>

# Charge Type Detail Report (Trip Date)

Period IS 201607 OR -201607; AND Company IS City of Bloomington

	<u>Count</u>	<u>Dollars</u>
<b>CityofBloomington</b>		
<b>ALS Emergency</b>		
BLFD ALS Emergency Base Rate	74.0	54,606.82
Totals For Type: ALS Emergency	74.0	\$ 54,606.82
<b>ALS Emergency II</b>		
BLFD ALS II Emergency Base Rat	1.0	827.71
Totals For Type: ALS Emergency II	1.0	\$ 827.71
<b>BLS Emergency</b>		
BLFD BLS Emergency Base Rate	171.0	105,153.03
Totals For Type: BLS Emergency	171.0	\$ 105,153.03
<b>Mileage</b>		
BLFD Mileage	655.4	9,674.08
Totals For Type: Mileage	655.4	\$ 9,674.08
<b>Misc Fee</b>		
Interest	7,029.0	70.29
Totals For Type: Misc Fee	7,029.0	\$ 70.29
<b>Misc. Services</b>		
BLFD ALS Intercept Fee	32.0	9,154.24
BLFD ALSII Intercept Fee	1.0	414.05
Totals For Type: Misc. Services	33.0	\$ 9,568.29
<b>Misc. Supplies</b>		
BLFD Oxygen	17.0	304.47
Totals For Type: Misc. Supplies	17.0	\$ 304.47
<b>Treatment No Transport</b>		
BLFD Treatment no transport	1.0	184.48
Totals For Type: Treatment No Transport	1.0	\$ 184.48

# Charge Type Detail Report (Trip Date)

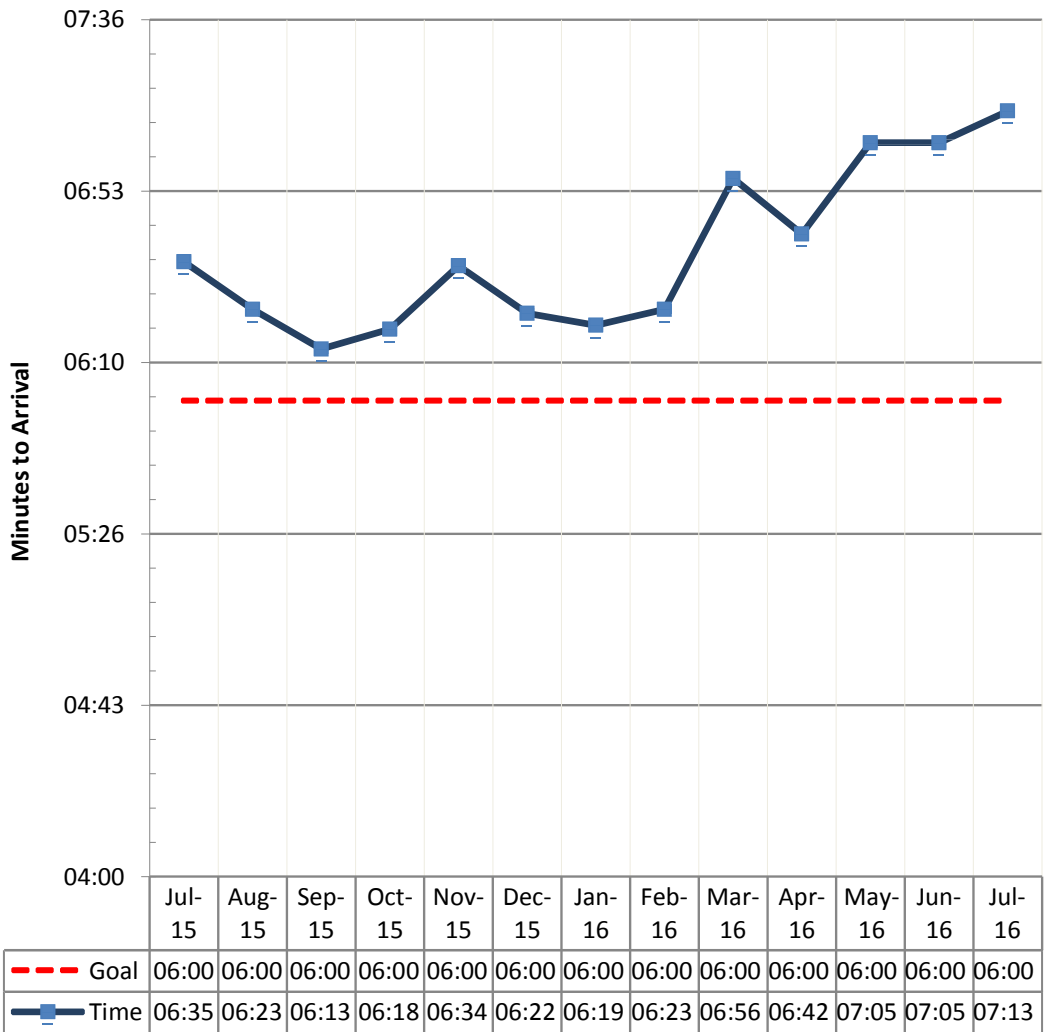
Period IS 201607 OR -201607; AND Company IS City of Bloomington

---

	<u>Count</u>	Dollars
<b>Totals For Company:</b> City of Bloomington	7981.4	\$180,389.17
<b>Reort Totals:</b>	<u>7,981.4</u>	\$ 180,389.17

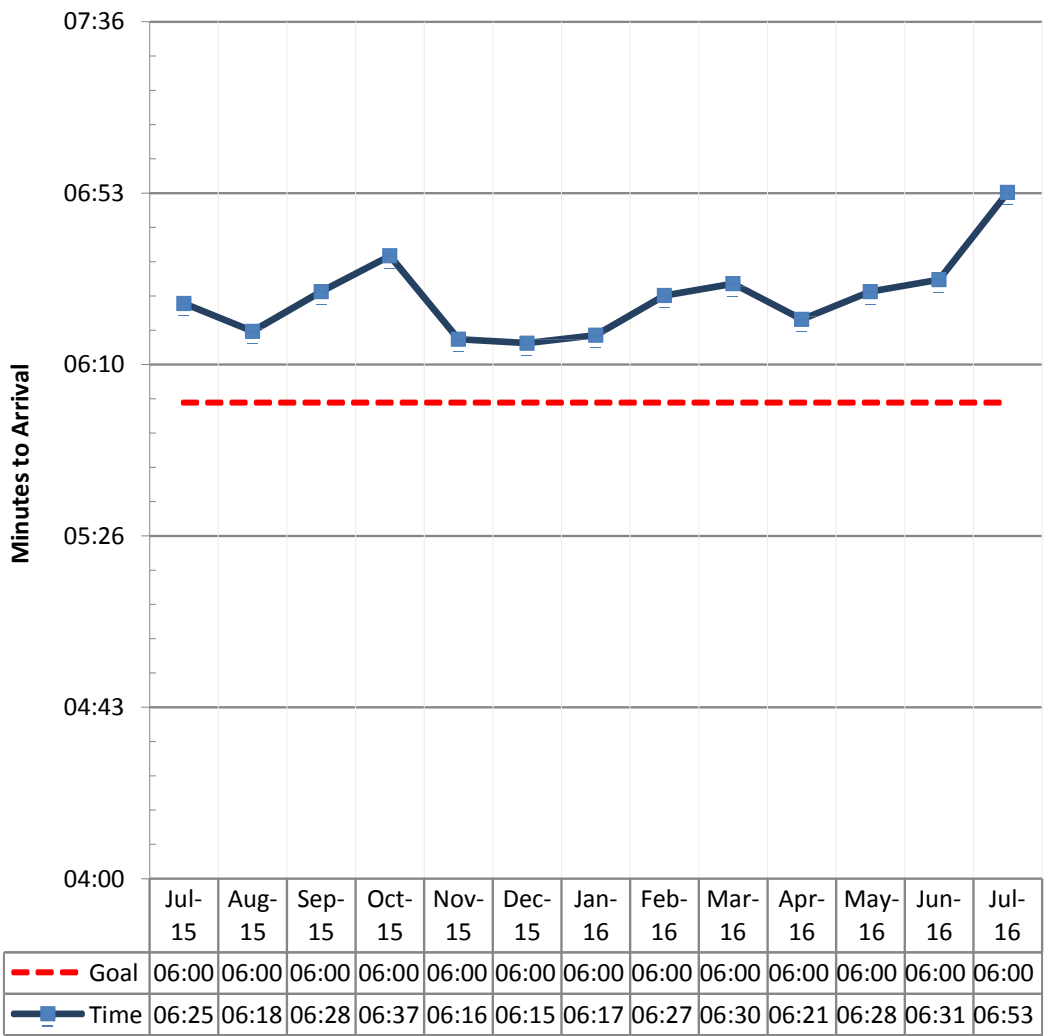
# Bloomington Fire Department Response Time Analysis Report Fire Calls

**Call Creation to Arrival**  
Goal < 6 Minutes



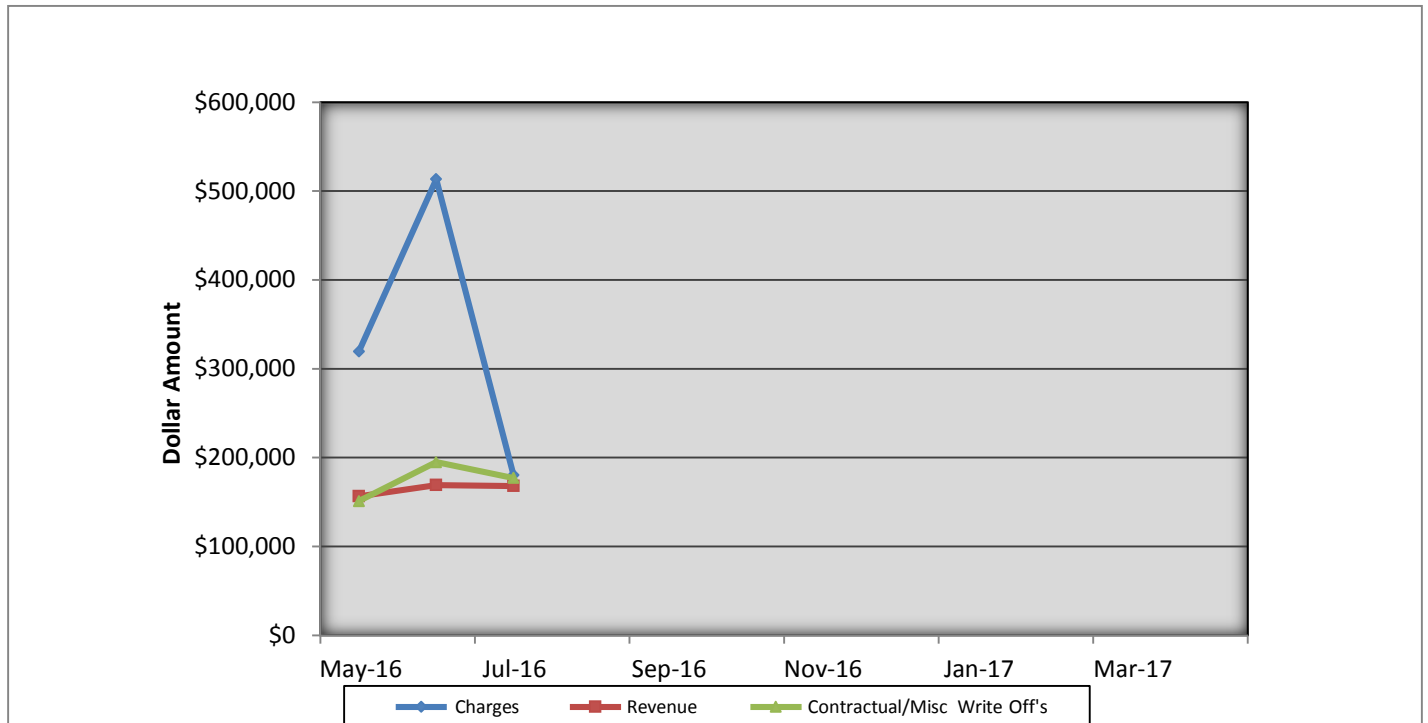
# Bloomington Fire Department Response Time Analysis Report EMS Calls

**Call Creation to Arrival**  
Goal < 6 Minutes



## Bloomington Fire Dept EMS Billing

Fiscal Year 2015/2016



- Charges represent billings for emergency transports, intercepts, and ambulance standby's.
- Revenue represents the amount of revenue collected for emergency transports, intercepts, and ambulance stand by's.
- Contractual/Miscellaneous Write Off's- are the combination of contractual allowances and miscellaneous write off's. Contractuals are the amounts above what federal and state mandated carriers allow for EMS services. Miscellaneous write off's include Financial Hardships, Bankruptcies, Small Balances, Workman's Compensation, and Incarcerated Patients.
- Bad Debt-Write off's on the accounts forwarded to a third party collection agency for further collection processing \$32,330.01

### Totals Breakdown

---

Charge total-\$180,389.17

Revenue-\$167,997.20

Contractuals/Miscellaneous Write Offs \$176,971.32